



**Office of Temporary  
and Disability Assistance**

# **Temporary and Disability Assistance Statistics**

**October 2014**



---

# Temporary and Disability Assistance Statistics

## OCTOBER 2014

---

### Temporary Assistance

Temporary Assistance recipients totaled 571,842 in October 2014, increasing by 4,033 (+0.7%) from the previous month. Related expenditures totaled \$192,173,265 in October 2014, increasing by approximately \$7.6 million (+4.1%) over September 2014.

### Supplemental Nutrition Assistance Program

Supplemental Nutrition Assistance Program recipients totaled 3,068,825 in October 2014, increasing by 2,139 (+0.1%) from the previous month. Related expenditures totaled \$435,393,856 in October 2014, increasing by approximately \$16.7 million (+4.0%) over September 2014.

### Supplemental Security Income

Supplemental Security Income recipients (including Mental Hygiene) totaled 707,309 in October 2014, increasing by 3,697 (+0.5%) from the previous month. Related expenditures totaled \$408,633,175 in October 2014, decreasing by approximately \$8.0 million (-1.9%) over September 2014.

Note: New York State's October 2014 administrative takeover of the State Supplement portion of the Supplemental Security Income (SSI) benefit precipitated systems changes that disrupted the pre-existing statistical reporting processes for the SSI program overall. This has resulted in overcounting program participants and possibly expenditures on the monthly reports from October 2014 to the present. The New York State Office of Information Technology Services is working on tracing and correcting the cause of this problem, but, until these adjustments are made, the SSI statistics contained in this report are included to fulfill statutory reporting requirements only and should not be used for trending or other purposes.

Date Issued December 30, 2014

# Table of Contents

## Ten Year Trend Graphs

Temporary Assistance Recipients	4
Supplemental Nutrition Assistance Program Recipients	4
Supplemental Security Income Recipients	4

## Temporary Assistance, SSI and SNAP Summary

<b>Table 1:</b>	Temporary Assistance, Family Assistance-FP, Safety Net Assistance, Supplemental Security Income and Supplemental Nutrition Assistance Program Cases by Region	5
<b>Table 2:</b>	Temporary Assistance, Family Assistance-FP, Safety Net Assistance, Supplemental Security Income and Supplemental Nutrition Assistance Program Recipients by Region	5
<b>Table 3:</b>	Temporary Assistance, Family Assistance-FP, Safety Net Assistance, Supplemental Security Income and Supplemental Nutrition Assistance Program Expenditures by Region	5

## Temporary Assistance by Program Area

<b>Table 4:</b>	Temporary Assistance Year to Year Monthly Comparison Cases, Recipients and Expenditures	6
<b>Table 5:</b>	Temporary Assistance Cases, Recipients, Children, Adults and Expenditures	7
<b>Table 6:</b>	Family Assistance-FP Cases, Recipients, Children, Adults and Expenditures	8
<b>Table 7:</b>	Safety Net Assistance Cases, Recipients, Children, Adults and Expenditures	9

## Temporary Assistance by Funding Source and Program Area

<b>Table 8:</b>	Temporary Assistance by Funding Source (Federally Participating and Federally Non-Participating) Cases, Recipients and Expenditures	10
<b>Table 9:</b>	Temporary Assistance for Needy Families-FP by Program (Family Assistance-FP and Safety Net Assistance-FP) Cases, Recipients, Children, Adults and Expenditures	11
<b>Table 10:</b>	Safety Net Assistance-FNP and Family Assistance-FNP Cases, Recipients, Children, Adults and Expenditures	12
<b>Table 11:</b>	Safety Net Assistance-FNP by Maintenance of Effort Status Cases, Recipients, Children, Adults and Expenditures	13
<b>Table 12:</b>	Safety Net Assistance-FNP-Cash Total Cases, Recipients, Children, Adults and Expenditures	14
<b>Table 13:</b>	Safety Net Assistance-FNP-Cash by Maintenance of Effort Status Cases, Recipients, Children, Adults and Expenditures	15
<b>Table 14:</b>	Safety Net Assistance-FNP-Non-Cash Total Cases, Recipients, Children, Adults and Expenditures	16
<b>Table 15:</b>	Safety Net Assistance-FNP-Non-Cash by Maintenance of Effort Status Cases, Recipients, Children, Adults and Expenditures	17

## Supplemental Nutrition Assistance Program

<b>Table 16:</b>	Supplemental Nutrition Assistance Program Households, Persons and Value of Supplemental Nutrition Assistance Program Benefits	18
------------------	---	----

## Supplemental Security Income

<b>Table 17:</b>	Supplemental Security Income Recipients, Total Program Expenditures and Federal and State Shares	19
<b>Table 18:</b>	Supplemental Security Income Recipients by Living Arrangement and Location	20
<b>Table 19:</b>	Supplemental Security Income Recipients by Living Arrangement and Category of Assistance	20

# Table of Contents

## Child Support

<b>Table 20:</b>	Child Support Collections (IV-D)	21
------------------	----------------------------------	----

## Aggregate Claims

<b>Table 21:</b>	Aggregate Claims - Total Temporary Assistance	22
<b>Table 22:</b>	Aggregate Claims - Federally Participating - TANF	23
<b>Table 23:</b>	Aggregate Claims - Federally Non-Participating Safety Net Assistance-FNP Maintenance of Effort	24
<b>Table 24:</b>	Aggregate Claims - Federally Non-Participating Safety Net Assistance-FNP and Family Assistance-FNP Maintenance of Effort	25

## Home Energy Assistance Program

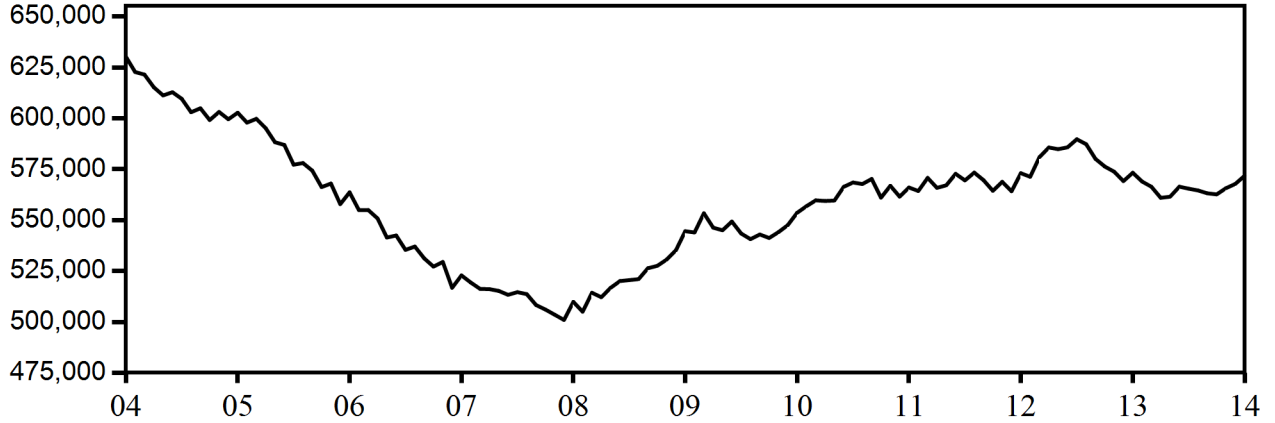
<b>Table 25:</b>	Home Energy Assistance Program Number and Dollar Amount of Benefits Authorized and Administrative Allocations	26
<b>Table 26:</b>	Home Energy Assistance Program - Non-Emergency Number, Total Dollar Amount and Average Dollar Amount of Benefits Authorized	27
<b>Table 27:</b>	Home Energy Assistance Program - Emergency Number, Total Dollar Amount and Average Dollar Amount of Benefits Authorized	28

## Welfare to Work Statistical Tables

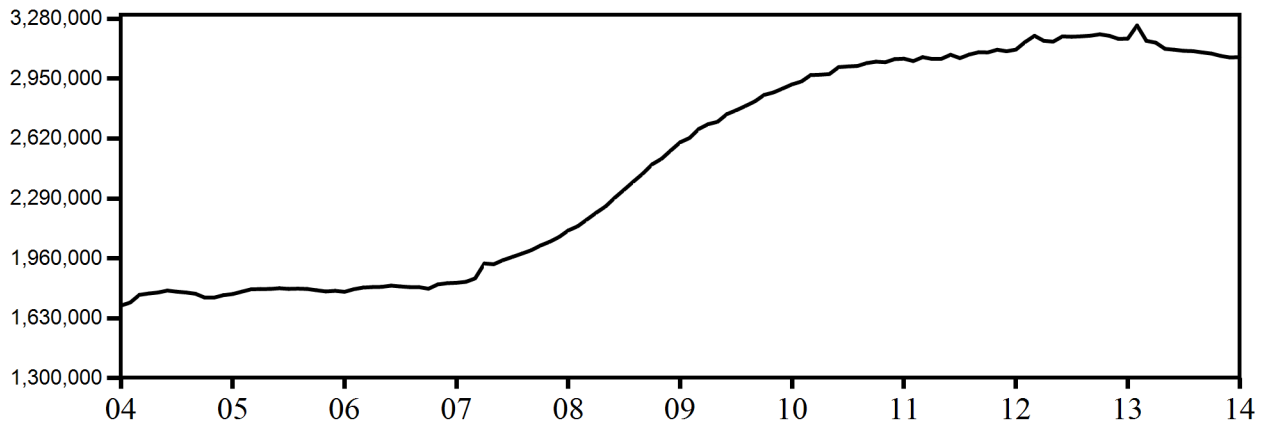
<b>Table 28:</b>	Federal All Families Work Participation Rates TANF, Safety Net Assistance MOE and Combined TANF and Safety Net Assistance MOE	29
<b>Table 29:</b>	Work Sanction Status by Presence in Federal All Families Work Participation Calculation TANF, Safety Net Assistance MOE and Combined TANF and Safety Net Assistance MOE	30
<b>Table 30:</b>	Temporary Assistance Cases with Earned Income Cases, Average Gross Earned Income and Average Net Earned Income after Application of Disregards	31

**NEW YORK STATE**  
**November 2004 - October 2014**  
**TEN YEAR TREND**

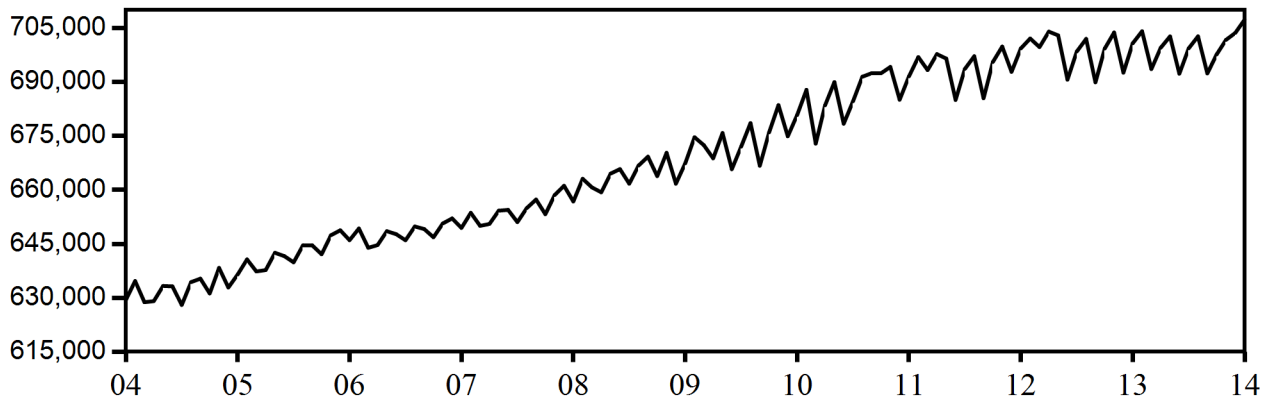
**Temporary Assistance Recipients**



**Supplemental Nutrition Assistance Program Recipients**



**Supplemental Security Income Recipients  
(Including Mental Hygiene)**



SELECTED SUMMARY PROGRAM DATA  
BY REGION

Table 1  
TEMPORARY AND DISABILITY ASSISTANCE CASES  
October 2014

Region	Cases				
	Temporary Assistance by Program			Supplemental Security Income	Supplemental Nutrition Assistance Program
	Total	Family Assistance-FP	Safety Net Assistance		
New York State	298,960	109,571	189,389	702,197	1,678,096
New York City	183,091	59,430	123,661	427,375	970,490
Rest of State	115,869	50,141	65,728	274,822	707,606

Table 2  
TEMPORARY AND DISABILITY ASSISTANCE RECIPIENTS  
October 2014

Region	Recipients				
	Temporary Assistance by Program			Supplemental Security Income	Supplemental Nutrition Assistance Program
	Total	Family Assistance-FP	Safety Net Assistance		
New York State	571,842	252,486	319,356	702,197	3,068,825
New York City	339,804	135,902	203,902	427,375	1,738,405
Rest of State	232,038	116,584	115,454	274,822	1,330,420

Table 3  
TEMPORARY AND DISABILITY ASSISTANCE EXPENDITURES  
October 2014

Region	Expenditures				
	Temporary Assistance by Program			Supplemental Security Income	Supplemental Nutrition Assistance Program
	Total	Family Assistance-FP	Safety Net Assistance		
New York State	\$192,173,265	\$71,334,343	\$120,838,922	\$406,719,798	\$435,393,856
New York City	115,445,507	36,333,967	79,111,540	251,118,406	258,590,138
Rest of State	76,727,758	35,000,376	41,727,382	155,601,392	176,803,718

Note: Supplemental Security Income data listed here do not include Mental Hygiene data. See Tables 17 - 19 for total Supplemental Security Income data.

Table 4  
**TEMPORARY ASSISTANCE**  
 Year to Year Monthly Comparison by Local District  
 Cases, Recipients and Expenditures  
 October 2014

Local District	October 2014			October 2013			October 2012		
	Cases	Recipients	Expenditures	Cases	Recipients	Expenditures	Cases	Recipients	Expenditures
New York State	298,960	571,842	\$192,173,265	298,704	573,292	\$187,274,153	299,507	573,068	\$187,088,842
New York City	183,091	339,804	115,445,507	183,932	342,337	114,219,022	187,621	349,717	116,721,090
Rest of State	115,869	232,038	76,727,758	114,772	230,955	73,055,131	111,886	223,351	70,367,752
Albany	3,009	6,480	2,014,209	3,073	6,789	2,120,104	2,947	6,501	1,939,932
Allegany	496	979	238,130	530	1,030	256,186	566	1,137	265,492
Broome	3,747	7,208	2,136,451	3,982	7,682	2,248,303	3,849	7,565	2,101,675
Cattaraugus	596	980	297,998	542	871	271,179	515	819	232,435
Cayuga	807	1,490	493,748	781	1,476	469,528	674	1,344	391,750
Chautauqua	2,682	5,720	1,387,837	2,699	5,876	1,469,772	2,649	5,820	1,420,628
Chemung	884	1,547	513,978	831	1,536	437,771	827	1,578	477,271
Chenango	457	790	218,100	370	660	180,530	408	723	194,149
Clinton	880	1,426	501,789	931	1,594	582,461	926	1,591	562,571
Columbia	548	1,069	315,185	546	1,055	305,878	534	1,003	292,816
Cortland	684	1,135	383,766	625	1,159	341,215	549	1,068	295,619
Delaware	281	487	154,454	287	475	134,708	271	458	134,711
Dutchess	1,392	2,535	1,104,359	1,396	2,590	1,126,304	1,535	2,943	1,125,078
Erie	15,476	33,613	8,066,343	14,153	30,967	7,107,473	13,450	28,559	6,850,451
Essex	140	227	98,505	149	252	102,901	130	214	83,674
Franklin	494	909	244,281	507	952	246,609	515	935	274,658
Fulton	356	588	192,894	342	634	207,283	343	644	218,975
Genesee	318	589	190,661	362	643	225,677	322	606	188,293
Greene	457	866	249,464	539	1,040	310,738	572	1,140	344,595
Hamilton	22	34	6,864	12	19	4,374	14	23	10,421
Herkimer	543	965	269,937	480	880	238,990	514	960	259,125
Jefferson	1,144	1,899	638,581	964	1,559	545,475	907	1,512	555,101
Lewis	120	203	55,711	117	185	60,625	106	173	59,636
Livingston	838	1,623	450,526	838	1,598	470,146	673	1,254	393,662
Madison	408	749	249,033	401	731	227,825	381	760	203,464
Monroe	16,253	33,392	10,039,726	16,848	34,270	10,108,239	15,915	32,177	8,532,035
Montgomery	563	1,366	273,533	557	1,290	342,681	544	1,285	338,875
Nassau	7,610	13,856	5,476,085	7,541	13,829	5,290,162	7,998	14,709	5,438,050
Niagara	3,378	6,515	1,553,868	3,244	6,292	1,586,401	3,132	5,993	1,963,838
Oneida	4,683	10,952	2,529,716	4,444	10,432	2,202,786	4,007	9,410	2,028,115
Onondaga	7,670	16,594	4,121,617	7,806	16,573	4,102,219	7,476	15,819	4,176,289
Ontario	889	1,537	523,877	836	1,448	474,745	804	1,398	428,372
Orange	2,972	6,283	2,914,008	3,268	6,993	2,557,455	3,242	7,083	2,629,765
Orleans	731	1,310	379,551	699	1,289	365,207	625	1,163	301,052
Oswego	1,774	3,726	952,094	1,708	3,673	881,734	1,483	3,106	764,760
Otsego	230	329	152,605	234	372	170,980	205	342	157,937
Putnam	150	217	133,758	143	191	135,316	109	150	119,949
Rensselaer	1,808	4,371	1,120,882	1,739	4,379	1,169,078	1,659	4,067	1,083,074
Rockland	1,571	3,058	898,423	1,697	3,377	1,018,007	1,730	3,429	1,082,440
St. Lawrence	1,379	2,711	668,336	1,240	2,443	607,362	1,206	2,314	651,959
Saratoga	397	625	237,746	400	576	259,377	407	554	253,457
Schenectady	2,077	4,585	1,410,311	2,079	4,514	1,277,232	1,662	3,666	1,121,383
Schoharie	213	381	136,129	226	381	142,092	155	259	90,063
Schuyler	215	414	128,784	228	422	137,512	216	397	115,341
Seneca	278	527	159,225	261	473	144,273	192	352	102,699
Steuben	965	1,834	484,421	961	1,856	489,176	937	1,819	499,202
Suffolk	10,401	19,178	10,972,242	10,222	19,162	9,537,333	11,100	20,298	10,000,828
Sullivan	740	1,549	465,442	930	1,914	595,662	1,082	2,234	695,196
Tioga	378	630	210,202	393	667	215,445	385	643	213,317
Tompkins	858	1,483	458,612	889	1,566	509,126	823	1,490	440,761
Ulster	2,316	4,283	1,745,917	2,175	4,095	1,447,854	2,054	3,814	1,312,031
Warren	251	400	178,615	239	401	164,436	227	357	157,505
Washington	358	603	231,513	372	613	259,860	330	526	232,826
Wayne	644	1,094	385,823	629	1,072	348,876	605	1,033	325,992
Westchester	6,988	13,537	7,115,717	6,963	13,563	6,648,067	7,090	13,588	6,076,894
Wyoming	188	328	96,337	193	337	101,015	170	318	79,533
Yates	162	259	99,839	151	239	73,368	139	228	78,032

Table 5  
**TEMPORARY ASSISTANCE**  
Cases, Recipients, Children, Adults and Expenditures by Local District  
October 2014

Local District	Temporary Assistance				
	Cases	Recipients	Children	Adults	Expenditures
New York State	298,960	571,842	300,916	270,926	\$192,173,265
New York City	183,091	339,804	170,264	169,540	115,445,507
Rest of State	115,869	232,038	130,652	101,386	76,727,758
Albany	3,009	6,480	3,826	2,654	2,014,209
Allegany	496	979	559	420	238,130
Broome	3,747	7,208	4,093	3,115	2,136,451
Cattaraugus	596	980	577	403	297,998
Cayuga	807	1,490	799	691	493,748
Chautauqua	2,682	5,720	3,279	2,441	1,387,837
Chemung	884	1,547	975	572	513,978
Chenango	457	790	443	347	218,100
Clinton	880	1,426	810	616	501,789
Columbia	548	1,069	589	480	315,185
Cortland	684	1,135	526	609	383,766
Delaware	281	487	301	186	154,454
Dutchess	1,392	2,535	1,583	952	1,104,359
Erie	15,476	33,613	19,291	14,322	8,066,343
Essex	140	227	141	86	98,505
Franklin	494	909	481	428	244,281
Fulton	356	588	340	248	192,894
Genesee	318	589	335	254	190,661
Greene	457	866	461	405	249,464
Hamilton	22	34	13	21	6,864
Herkimer	543	965	557	408	269,937
Jefferson	1,144	1,899	906	993	638,581
Lewis	120	203	127	76	55,711
Livingston	838	1,623	825	798	450,526
Madison	408	749	432	317	249,033
Monroe	16,253	33,392	18,642	14,750	10,039,726
Montgomery	563	1,366	895	471	273,533
Nassau	7,610	13,856	7,263	6,593	5,476,085
Niagara	3,378	6,515	3,533	2,982	1,553,868
Oneida	4,683	10,952	6,333	4,619	2,529,716
Onondaga	7,670	16,594	9,643	6,951	4,121,617
Ontario	889	1,537	830	707	523,877
Orange	2,972	6,283	3,681	2,602	2,914,008
Orleans	731	1,310	700	610	379,551
Oswego	1,774	3,726	2,075	1,651	952,094
Otsego	230	329	161	168	152,605
Putnam	150	217	107	110	133,758
Rensselaer	1,808	4,371	2,757	1,614	1,120,882
Rockland	1,571	3,058	1,792	1,266	898,423
St. Lawrence	1,379	2,711	1,442	1,269	668,336
Saratoga	397	625	408	217	237,746
Schenectady	2,077	4,585	2,852	1,733	1,410,311
Schoharie	213	381	218	163	136,129
Schuyler	215	414	211	203	128,784
Seneca	278	527	293	234	159,225
Steuben	965	1,834	1,025	809	484,421
Suffolk	10,401	19,178	9,797	9,381	10,972,242
Sullivan	740	1,549	1,006	543	465,442
Tioga	378	630	426	204	210,202
Tompkins	858	1,483	721	762	458,612
Ulster	2,316	4,283	2,196	2,087	1,745,917
Warren	251	400	225	175	178,615
Washington	358	603	372	231	231,513
Wayne	644	1,094	619	475	385,823
Westchester	6,988	13,537	7,815	5,722	7,115,717
Wyoming	188	328	193	135	96,337
Yates	162	259	152	107	99,839



Table 6  
**FAMILY ASSISTANCE-FP**  
Cases, Recipients, Children, Adults and Expenditures by Local District  
October 2014

Local District	Family Assistance-FP				
	Cases	Recipients	Children	Adults	Expenditures
New York State	109,571	252,486	187,528	64,958	\$71,334,343
New York City	59,430	135,902	101,697	34,205	36,333,967
Rest of State	50,141	116,584	85,831	30,753	35,000,376
Albany	1,439	3,336	2,420	916	975,040
Allegany	238	551	410	141	121,504
Broome	1,634	3,558	2,674	884	977,314
Cattaraugus	307	604	487	117	158,836
Cayuga	362	829	599	230	239,674
Chautauqua	1,251	2,914	2,077	837	676,079
Chemung	450	924	766	158	262,371
Chenango	222	463	354	109	120,904
Clinton	451	858	678	180	239,396
Columbia	263	635	459	176	144,096
Cortland	248	543	386	157	137,864
Delaware	160	345	280	65	92,903
Dutchess	698	1,494	1,202	292	603,201
Erie	6,607	16,010	11,610	4,400	3,639,870
Essex	76	148	122	26	47,835
Franklin	213	473	341	132	112,891
Fulton	183	395	319	76	96,740
Genesee	159	352	260	92	102,904
Greene	179	410	300	110	101,739
Hamilton	8	14	10	4	3,590
Herkimer	283	604	466	138	146,858
Jefferson	426	927	687	240	227,408
Lewis	68	136	111	25	34,181
Livingston	373	930	634	296	214,259
Madison	199	441	335	106	122,719
Monroe	6,512	15,571	11,154	4,417	4,476,187
Montgomery	370	947	699	248	186,833
Nassau	2,922	6,489	4,831	1,658	2,333,384
Niagara	1,412	3,229	2,339	890	727,690
Oneida	2,042	5,335	3,803	1,532	1,176,154
Onondaga	3,445	8,310	5,986	2,324	1,971,983
Ontario	406	868	660	208	229,583
Orange	1,287	3,041	2,276	765	1,308,640
Orleans	292	615	459	156	162,460
Oswego	837	2,080	1,473	607	491,483
Otsego	100	186	148	38	54,788
Putnam	63	119	98	21	41,767
Rensselaer	1,045	2,489	1,758	731	625,692
Rockland	691	1,594	1,286	308	443,273
St. Lawrence	601	1,358	973	385	304,692
Saratoga	222	410	357	53	116,102
Schenectady	1,056	2,471	1,839	632	753,109
Schoharie	105	231	184	47	61,269
Schuyler	80	201	144	57	44,762
Seneca	127	297	219	78	66,192
Steuben	417	962	722	240	213,363
Suffolk	3,888	9,201	6,726	2,475	4,518,038
Sullivan	387	857	679	178	231,977
Tioga	241	459	384	75	127,948
Tompkins	324	678	489	189	195,299
Ulster	1,022	2,291	1,596	695	786,701
Warren	131	261	206	55	89,784
Washington	180	394	329	65	109,407
Wayne	318	666	518	148	199,739
Westchester	2,937	6,722	5,218	1,504	3,246,076
Wyoming	100	210	165	45	56,489
Yates	84	148	126	22	49,336

Table 7  
SAFETY NET ASSISTANCE\*  
Cases, Recipients, Children, Adults and Expenditures by Local District  
October 2014

Local District	Safety Net Assistance					Expenditures
	Cases	Recipients	Children	Adults		
New York State	189,389	319,356	113,388	205,968	\$120,838,922	
New York City	123,661	203,902	68,567	135,335	79,111,540	
Rest of State	65,728	115,454	44,821	70,633	41,727,382	
Albany	1,570	3,144	1,406	1,738	1,039,169	
Allegany	258	428	149	279	116,626	
Broome	2,113	3,650	1,419	2,231	1,159,137	
Cattaraugus	289	376	90	286	139,162	
Cayuga	445	661	200	461	254,074	
Chautauqua	1,431	2,806	1,202	1,604	711,758	
Chemung	434	623	209	414	251,607	
Chenango	235	327	89	238	97,196	
Clinton	429	568	132	436	262,393	
Columbia	285	434	130	304	171,089	
Cortland	436	592	140	452	245,902	
Delaware	121	142	21	121	61,551	
Dutchess	694	1,041	381	660	501,158	
Erie	8,869	17,603	7,681	9,922	4,426,473	
Essex	64	79	19	60	50,670	
Franklin	281	436	140	296	131,390	
Fulton	173	193	21	172	96,154	
Genesee	159	237	75	162	87,757	
Greene	278	456	161	295	147,725	
Hamilton	14	20	3	17	3,274	
Herkimer	260	361	91	270	123,079	
Jefferson	718	972	219	753	411,173	
Lewis	52	67	16	51	21,530	
Livingston	465	693	191	502	236,267	
Madison	209	308	97	211	126,314	
Monroe	9,741	17,821	7,488	10,333	5,563,539	
Montgomery	193	419	196	223	86,700	
Nassau	4,688	7,367	2,432	4,935	3,142,701	
Niagara	1,966	3,286	1,194	2,092	826,178	
Oneida	2,641	5,617	2,530	3,087	1,353,562	
Onondaga	4,225	8,284	3,657	4,627	2,149,634	
Ontario	483	669	170	499	294,294	
Orange	1,685	3,242	1,405	1,837	1,605,368	
Orleans	439	695	241	454	217,091	
Oswego	937	1,646	602	1,044	460,611	
Otsego	130	143	13	130	97,817	
Putnam	87	98	9	89	91,991	
Rensselaer	763	1,882	999	883	495,190	
Rockland	880	1,464	506	958	455,150	
St. Lawrence	778	1,353	469	884	363,644	
Saratoga	175	215	51	164	121,644	
Schenectady	1,021	2,114	1,013	1,101	657,202	
Schoharie	108	150	34	116	74,860	
Schuyler	135	213	67	146	84,022	
Seneca	151	230	74	156	93,033	
Steuben	548	872	303	569	271,058	
Suffolk	6,513	9,977	3,071	6,906	6,454,204	
Sullivan	353	692	327	365	233,465	
Tioga	137	171	42	129	82,254	
Tompkins	534	805	232	573	263,313	
Ulster	1,294	1,992	600	1,392	959,216	
Warren	120	139	19	120	88,831	
Washington	178	209	43	166	122,106	
Wayne	326	428	101	327	186,084	
Westchester	4,051	6,815	2,597	4,218	3,869,641	
Wyoming	88	118	28	90	39,848	
Yates	78	111	26	85	50,503	

\* Includes Federally Non-Participating Family Assistance cases (non-disabled two-parent Family Assistance cases).

Table 8  
 TEMPORARY ASSISTANCE BY FUNDING SOURCE  
 Cases, Recipients, and Expenditures by Local District  
 October 2014

Local District	Total			Federally Participating-TANF Family Assistance-FP and Safety Net Assistance-FP			Federally Non-Participating Safety Net Assistance-FNP and Family Assistance-FNP		
	Cases	Recipients	Expenditures	Cases	Recipients	Expenditures	Cases	Recipients	Expenditures
New York State	298,960	571,842	\$192,173,265	110,823	255,720	\$72,177,458	188,137	316,122	\$119,995,807
New York City	183,091	339,804	115,445,507	59,644	136,355	36,442,458	123,447	203,449	79,003,049
Rest of State	115,869	232,038	76,727,758	51,179	119,365	35,735,000	64,690	112,673	40,992,758
Albany	3,009	6,480	2,014,209	1,455	3,374	985,011	1,554	3,106	1,029,198
Allegany	496	979	238,130	240	560	123,289	256	419	114,841
Broome	3,747	7,208	2,136,451	1,669	3,656	999,403	2,078	3,552	1,137,048
Cattaraugus	596	980	297,998	310	609	160,115	286	371	137,883
Cayuga	807	1,490	493,748	379	874	251,392	428	616	242,356
Chautauqua	2,682	5,720	1,387,837	1,262	2,938	680,717	1,420	2,782	707,120
Chemung	884	1,547	513,978	460	952	269,101	424	595	244,877
Chenango	457	790	218,100	225	469	121,823	232	321	96,277
Clinton	880	1,426	501,789	459	881	243,090	421	545	258,699
Columbia	548	1,069	315,185	269	651	148,962	279	418	166,223
Cortland	684	1,135	383,766	259	570	144,653	425	565	239,113
Delaware	281	487	154,454	160	345	92,903	121	142	61,551
Dutchess	1,392	2,535	1,104,359	702	1,502	606,902	690	1,033	497,457
Erie	15,476	33,613	8,066,343	6,708	16,276	3,692,376	8,768	17,337	4,373,967
Essex	140	227	98,505	80	158	53,414	60	69	45,091
Franklin	494	909	244,281	214	475	113,132	280	434	131,149
Fulton	356	588	192,894	185	400	97,989	171	188	94,905
Genesee	318	589	190,661	167	369	110,977	151	220	79,684
Greene	457	866	249,464	186	427	106,316	271	439	143,148
Hamilton	22	34	6,864	9	18	3,841	13	16	3,023
Herkimer	543	965	269,937	287	615	149,133	256	350	120,804
Jefferson	1,144	1,899	638,581	452	983	243,054	692	916	395,527
Lewis	120	203	55,711	69	138	34,387	51	65	21,324
Livingston	838	1,623	450,526	384	957	221,414	454	666	229,112
Madison	408	749	249,033	213	492	131,859	195	257	117,174
Monroe	16,253	33,392	10,039,726	6,843	16,452	4,690,762	9,410	16,940	5,348,964
Montgomery	563	1,366	273,533	374	956	188,804	189	410	84,729
Nassau	7,610	13,856	5,476,085	2,935	6,518	2,343,492	4,675	7,338	3,132,593
Niagara	3,378	6,515	1,553,868	1,477	3,400	756,599	1,901	3,115	797,269
Oneida	4,683	10,952	2,529,716	2,082	5,452	1,198,668	2,601	5,500	1,331,048
Onondaga	7,670	16,594	4,121,617	3,460	8,356	1,980,567	4,210	8,238	2,141,050
Ontario	889	1,537	523,877	412	884	234,554	477	653	289,323
Orange	2,972	6,283	2,914,008	1,301	3,078	1,325,515	1,671	3,205	1,588,493
Orleans	731	1,310	379,551	299	638	166,600	432	672	212,951
Oswego	1,774	3,726	952,094	871	2,191	510,869	903	1,535	441,225
Otsego	230	329	152,605	103	191	57,315	127	138	95,290
Putnam	150	217	133,758	64	121	42,079	86	96	91,679
Rensselaer	1,808	4,371	1,120,882	1,068	2,546	640,519	740	1,825	480,363
Rockland	1,571	3,058	898,423	696	1,607	447,787	875	1,451	450,636
St. Lawrence	1,379	2,711	668,336	605	1,365	308,532	774	1,346	359,804
Saratoga	397	625	237,746	227	419	117,960	170	206	119,786
Schenectady	2,077	4,585	1,410,311	1,060	2,489	756,285	1,017	2,096	654,026
Schoharie	213	381	136,129	105	231	61,269	108	150	74,860
Schuyler	215	414	128,784	80	201	44,762	135	213	84,022
Seneca	278	527	159,225	129	302	68,203	149	225	91,022
Steuben	965	1,834	484,421	417	962	213,363	548	872	271,058
Suffolk	10,401	19,178	10,972,242	3,958	9,408	4,631,670	6,443	9,770	6,340,572
Sullivan	740	1,549	465,442	393	875	234,674	347	674	230,768
Tioga	378	630	210,202	245	470	135,335	133	160	74,867
Tompkins	858	1,483	458,612	337	703	201,657	521	780	256,955
Ulster	2,316	4,283	1,745,917	1,032	2,312	793,602	1,284	1,971	952,315
Warren	251	400	178,615	135	274	92,300	116	126	86,315
Washington	358	603	231,513	187	410	115,203	171	193	116,310
Wayne	644	1,094	385,823	336	716	209,953	308	378	175,870
Westchester	6,988	13,537	7,115,717	2,961	6,791	3,275,024	4,027	6,746	3,840,693
Wyoming	188	328	96,337	100	210	56,489	88	118	39,848
Yates	162	259	99,839	84	148	49,336	78	111	50,503

Table 9  
**TEMPORARY ASSISTANCE FOR NEEDY FAMILIES-FP BY PROGRAM**  
 Cases, Recipients, Children, Adults and Expenditures by Local District  
 October 2014

Local District	Family Assistance-FP					Safety Net Assistance-FP				
	Cases	Recipients	Children	Adults	Expenditures	Cases	Recipients	Children	Adults	Expenditures
New York State	109,571	252,486	187,528	64,958	\$71,334,343	1,252	3,234	1,902	1,332	\$843,115
New York City	59,430	135,902	101,697	34,205	36,333,967	214	453	319	134	108,491
Rest of State	50,141	116,584	85,831	30,753	35,000,376	1,038	2,781	1,583	1,198	734,624
Albany	1,439	3,336	2,420	916	975,040	16	38	22	16	9,971
Allegany	238	551	410	141	121,504	2	9	5	4	1,785
Broome	1,634	3,558	2,674	884	977,314	35	98	56	42	22,089
Cattaraugus	307	604	487	117	158,836	3	5	2	3	1,279
Cayuga	362	829	599	230	239,674	17	45	25	20	11,718
Chautauqua	1,251	2,914	2,077	837	676,079	11	24	12	12	4,638
Chemung	450	924	766	158	262,371	10	28	19	9	6,730
Chenango	222	463	354	109	120,904	3	6	2	4	919
Clinton	451	858	678	180	239,396	8	23	13	10	3,694
Columbia	263	635	459	176	144,096	6	16	9	7	4,866
Cortland	248	543	386	157	137,864	11	27	14	13	6,789
Delaware	160	345	280	65	92,903	0	0	0	0	0
Dutchess	698	1,494	1,202	292	603,201	4	8	4	4	3,701
Erie	6,607	16,010	11,610	4,400	3,639,870	101	266	148	118	52,506
Essex	76	148	122	26	47,835	4	10	6	4	5,579
Franklin	213	473	341	132	112,891	1	2	1	1	241
Fulton	183	395	319	76	96,740	2	5	3	2	1,249
Genesee	159	352	260	92	102,904	8	17	10	7	8,073
Greene	179	410	300	110	101,739	7	17	8	9	4,577
Hamilton	8	14	10	4	3,590	1	4	2	2	251
Herkimer	283	604	466	138	146,858	4	11	5	6	2,275
Jefferson	426	927	687	240	227,408	26	56	32	24	15,646
Lewis	68	136	111	25	34,181	1	2	1	1	206
Livingston	373	930	634	296	214,259	11	27	16	11	7,155
Madison	199	441	335	106	122,719	14	51	31	20	9,140
Monroe	6,512	15,571	11,154	4,417	4,476,187	331	881	512	369	214,575
Montgomery	370	947	699	248	186,833	4	9	4	5	1,971
Nassau	2,922	6,489	4,831	1,658	2,333,384	13	29	16	13	10,108
Niagara	1,412	3,229	2,339	890	727,690	65	171	98	73	28,909
Oneida	2,042	5,335	3,803	1,532	1,176,154	40	117	67	50	22,514
Onondaga	3,445	8,310	5,986	2,324	1,971,983	15	46	26	20	8,584
Ontario	406	868	660	208	229,583	6	16	8	8	4,971
Orange	1,287	3,041	2,276	765	1,308,640	14	37	19	18	16,875
Orleans	292	615	459	156	162,460	7	23	15	8	4,140
Oswego	837	2,080	1,473	607	491,483	34	111	66	45	19,386
Otsego	100	186	148	38	54,788	3	5	2	3	2,527
Putnam	63	119	98	21	41,767	1	2	1	1	312
Rensselaer	1,045	2,489	1,758	731	625,692	23	57	30	27	14,827
Rockland	691	1,594	1,286	308	443,273	5	13	7	6	4,514
St. Lawrence	601	1,358	973	385	304,692	4	7	3	4	3,840
Saratoga	222	410	357	53	116,102	5	9	4	5	1,858
Schenectady	1,056	2,471	1,839	632	753,109	4	18	12	6	3,176
Schoharie	105	231	184	47	61,269	0	0	0	0	0
Schuyler	80	201	144	57	44,762	0	0	0	0	0
Seneca	127	297	219	78	66,192	2	5	2	3	2,011
Steuben	417	962	722	240	213,363	0	0	0	0	0
Suffolk	3,888	9,201	6,726	2,475	4,518,038	70	207	121	86	113,632
Sullivan	387	857	679	178	231,977	6	18	10	8	2,697
Tioga	241	459	384	75	127,948	4	11	7	4	7,387
Tompkins	324	678	489	189	195,299	13	25	10	15	6,358
Ulster	1,022	2,291	1,596	695	786,701	10	21	8	13	6,901
Warren	131	261	206	55	89,784	4	13	8	5	2,516
Washington	180	394	329	65	109,407	7	16	10	6	5,796
Wayne	318	666	518	148	199,739	18	50	29	21	10,214
Westchester	2,937	6,722	5,218	1,504	3,246,076	24	69	42	27	28,948
Wyoming	100	210	165	45	56,489	0	0	0	0	0
Yates	84	148	126	22	49,336	0	0	0	0	0

Table 10  
SAFETY NET ASSISTANCE-FNP AND FAMILY ASSISTANCE-FNP  
Cases, Recipients, Children, Adults and Expenditures by Local District  
October 2014

Local District	Safety Net Assistance-FNP and Family Assistance-FNP				
	Cases	Recipients	Children	Adults	Expenditures
New York State	188,137	316,122	111,486	204,636	\$119,995,807
New York City	123,447	203,449	68,248	135,201	79,003,049
Rest of State	64,690	112,673	43,238	69,435	40,992,758
Albany	1,554	3,106	1,384	1,722	1,029,198
Allegany	256	419	144	275	114,841
Broome	2,078	3,552	1,363	2,189	1,137,048
Cattaraugus	286	371	88	283	137,883
Cayuga	428	616	175	441	242,356
Chautauqua	1,420	2,782	1,190	1,592	707,120
Chemung	424	595	190	405	244,877
Chenango	232	321	87	234	96,277
Clinton	421	545	119	426	258,699
Columbia	279	418	121	297	166,223
Cortland	425	565	126	439	239,113
Delaware	121	142	21	121	61,551
Dutchess	690	1,033	377	656	497,457
Erie	8,768	17,337	7,533	9,804	4,373,967
Essex	60	69	13	56	45,091
Franklin	280	434	139	295	131,149
Fulton	171	188	18	170	94,905
Genesee	151	220	65	155	79,684
Greene	271	439	153	286	143,148
Hamilton	13	16	1	15	3,023
Herkimer	256	350	86	264	120,804
Jefferson	692	916	187	729	395,527
Lewis	51	65	15	50	21,324
Livingston	454	666	175	491	229,112
Madison	195	257	66	191	117,174
Monroe	9,410	16,940	6,976	9,964	5,348,964
Montgomery	189	410	192	218	84,729
Nassau	4,675	7,338	2,416	4,922	3,132,593
Niagara	1,901	3,115	1,096	2,019	797,269
Oneida	2,601	5,500	2,463	3,037	1,331,048
Onondaga	4,210	8,238	3,631	4,607	2,141,050
Ontario	477	653	162	491	289,323
Orange	1,671	3,205	1,386	1,819	1,588,493
Orleans	432	672	226	446	212,951
Oswego	903	1,535	536	999	441,225
Otsego	127	138	11	127	95,290
Putnam	86	96	8	88	91,679
Rensselaer	740	1,825	969	856	480,363
Rockland	875	1,451	499	952	450,636
St. Lawrence	774	1,346	466	880	359,804
Saratoga	170	206	47	159	119,786
Schenectady	1,017	2,096	1,001	1,095	654,026
Schoharie	108	150	34	116	74,860
Schuyler	135	213	67	146	84,022
Seneca	149	225	72	153	91,022
Steuben	548	872	303	569	271,058
Suffolk	6,443	9,770	2,950	6,820	6,340,572
Sullivan	347	674	317	357	230,768
Tioga	133	160	35	125	74,867
Tompkins	521	780	222	558	256,955
Ulster	1,284	1,971	592	1,379	952,315
Warren	116	126	11	115	86,315
Washington	171	193	33	160	116,310
Wayne	308	378	72	306	175,870
Westchester	4,027	6,746	2,555	4,191	3,840,693
Wyoming	88	118	28	90	39,848
Yates	78	111	26	85	50,503

Table 11  
**SAFETY NET ASSISTANCE-FNP BY MAINTENANCE OF EFFORT STATUS**  
 Maintenance of Effort (MOE) vs. Non-Maintenance of Effort (Non-MOE)  
 Cases, Recipients, Children, Adults and Expenditures by Local District  
 October 2014

Local District	Maintenance of Effort (MOE)					Non-Maintenance of Effort (Non-MOE)*				
	Cases	Recipients	Children	Adults	Expenditures	Cases	Recipients	Children	Adults	Expenditures
New York State	36,365	117,954	80,273	37,681	\$26,236,236	151,772	198,168	31,213	166,955	\$93,759,571
New York City	24,843	77,641	51,848	25,793	16,597,746	98,604	125,808	16,400	109,408	62,405,303
Rest of State	11,522	40,313	28,425	11,888	9,638,490	53,168	72,360	14,813	57,547	31,354,268
Albany	342	1,219	868	351	255,427	1,212	1,887	516	1,371	773,771
Allegany	34	102	68	34	18,865	222	317	76	241	95,976
Broome	378	1,309	912	397	253,839	1,700	2,243	451	1,792	883,209
Cattaraugus	20	76	55	21	13,990	266	295	33	262	123,893
Cayuga	41	146	101	45	28,180	387	470	74	396	214,176
Chautauqua	356	1,188	799	389	244,652	1,064	1,594	391	1,203	462,468
Chemung	39	155	112	43	29,467	385	440	78	362	215,410
Chenango	13	47	34	13	7,489	219	274	53	221	88,788
Clinton	35	110	73	37	24,839	386	435	46	389	233,860
Columbia	27	101	72	29	18,361	252	317	49	268	147,862
Cortland	34	114	77	37	23,497	391	451	49	402	215,616
Delaware	3	11	8	3	1,695	118	131	13	118	59,856
Dutchess	105	346	243	103	87,516	585	687	134	553	409,941
Erie	1,724	6,230	4,462	1,768	1,088,654	7,044	11,107	3,071	8,036	3,285,313
Essex	2	6	5	1	1,217	58	63	8	55	43,874
Franklin	38	122	85	37	25,451	242	312	54	258	105,698
Fulton	0	0	0	0	0	171	188	18	170	94,905
Genesee	16	59	41	18	11,379	135	161	24	137	68,305
Greene	39	130	90	40	23,600	232	309	63	246	119,548
Hamilton	0	0	0	0	0	13	16	1	15	3,023
Herkimer	23	72	51	21	14,772	233	278	35	243	106,032
Jefferson	38	126	86	40	21,787	654	790	101	689	373,740
Lewis	2	6	4	2	658	49	59	11	48	20,666
Livingston	39	128	87	41	28,570	415	538	88	450	200,542
Madison	21	64	42	22	14,652	174	193	24	169	102,522
Monroe	2,267	7,886	5,529	2,357	1,824,763	7,143	9,054	1,447	7,607	3,524,201
Montgomery	42	154	112	42	20,973	147	256	80	176	63,756
Nassau	845	2,726	1,872	854	849,781	3,830	4,612	544	4,068	2,282,812
Niagara	311	1,088	761	327	186,099	1,590	2,027	335	1,692	611,170
Oneida	459	1,741	1,271	470	310,854	2,142	3,759	1,192	2,567	1,020,194
Onondaga	708	2,709	1,992	717	460,839	3,502	5,529	1,639	3,890	1,680,211
Ontario	36	117	80	37	22,317	441	536	82	454	267,006
Orange	395	1,403	998	405	424,279	1,276	1,802	388	1,414	1,164,214
Orleans	54	179	123	56	38,954	378	493	103	390	173,997
Oswego	105	388	272	116	65,616	798	1,147	264	883	375,609
Otsego	1	2	1	1	264	126	136	10	126	95,026
Putnam	3	8	6	2	2,332	83	88	2	86	89,347
Rensselaer	230	808	580	228	125,629	510	1,017	389	628	354,734
Rockland	69	240	169	71	48,938	806	1,211	330	881	401,698
St. Lawrence	89	295	204	91	44,858	685	1,051	262	789	314,946
Saratoga	0	0	0	0	0	170	206	47	159	119,786
Schenectady	250	961	703	258	184,912	767	1,135	298	837	469,114
Schoharie	2	7	5	2	984	106	143	29	114	73,876
Schuyler	13	39	25	14	5,503	122	174	42	132	78,519
Seneca	15	61	45	16	10,295	134	164	27	137	80,727
Steuben	74	257	176	81	40,272	474	615	127	488	230,786
Suffolk	817	2,968	2,102	866	1,198,941	5,626	6,802	848	5,954	5,141,631
Sullivan	79	263	185	78	48,391	268	411	132	279	182,377
Tioga	5	20	17	3	2,571	128	140	18	122	72,296
Tompkins	55	195	135	60	29,579	466	585	87	498	227,376
Ulster	152	507	359	148	117,992	1,132	1,464	233	1,231	834,323
Warren	2	4	4	0	1,076	114	122	7	115	85,239
Washington	4	13	9	4	2,733	167	180	24	156	113,577
Wayne	22	61	39	22	11,117	286	317	33	284	164,753
Westchester	1,040	3,311	2,251	1,060	1,312,905	2,987	3,435	304	3,131	2,527,788
Wyoming	7	25	17	8	3,663	81	93	11	82	36,185
Yates	2	10	8	2	2,503	76	101	18	83	48,000

\* The Non-MOE category includes otherwise Temporary Assistance for Needy Families eligible or otherwise Safety Net Assistance MOE eligible non-disabled two-parent cases.

Table 12  
SAFETY NET ASSISTANCE-FNP-CASH TOTAL\*  
Cases, Recipients, Children, Adults and Expenditures by Local District  
October 2014

Local District	Safety Net Assistance-FNP Cash Total				
	Cases	Recipients	Children	Adults	Expenditures
New York State	See Note	See Note	See Note	See Note	See Note
New York City	See Note	See Note	See Note	See Note	See Note
Rest of State	37,768	54,991	13,485	41,506	\$21,829,274
Albany	882	1,475	453	1,022	557,309
Allegany	155	248	70	178	62,942
Broome	1,106	1,522	327	1,195	551,172
Cattaraugus	210	265	48	217	98,272
Cayuga	309	389	74	315	159,243
Chautauqua	730	1,156	317	839	300,947
Chemung	307	365	83	282	170,974
Chenango	196	254	56	198	72,929
Clinton	315	386	64	322	187,370
Columbia	185	251	49	202	92,316
Cortland	256	306	41	265	131,689
Delaware	95	109	14	95	48,850
Dutchess	412	563	168	395	264,690
Erie	5,191	8,883	2,807	6,076	2,330,198
Essex	50	54	6	48	34,766
Franklin	180	234	40	194	77,542
Fulton	132	148	17	131	64,226
Genesee	93	114	18	96	43,505
Greene	170	234	50	184	80,250
Hamilton	10	12	1	11	2,397
Herkimer	165	209	33	176	68,048
Jefferson	488	631	108	523	269,853
Lewis	35	45	7	38	15,283
Livingston	339	449	78	371	164,217
Madison	123	157	36	121	66,741
Monroe	4,616	6,638	1,627	5,011	2,328,226
Montgomery	109	208	71	137	44,153
Nassau	2,608	3,207	417	2,790	1,572,075
Niagara	1,033	1,351	238	1,113	376,332
Oneida	1,727	3,235	1,121	2,114	818,249
Onondaga	3,090	5,076	1,646	3,430	1,467,163
Ontario	322	406	65	341	182,729
Orange	880	1,268	291	977	801,731
Orleans	250	352	95	257	114,512
Oswego	656	987	254	733	308,043
Otsego	105	113	7	106	79,146
Putnam	53	60	6	54	49,897
Rensselaer	398	770	285	485	264,197
Rockland	428	622	153	469	192,332
St. Lawrence	485	770	207	563	200,646
Saratoga	121	157	45	112	82,554
Schenectady	564	823	222	601	306,366
Schoharie	81	118	29	89	54,878
Schuyler	102	150	41	109	69,374
Seneca	92	129	33	96	51,773
Steuben	355	474	104	370	165,430
Suffolk	4,133	5,299	884	4,415	3,851,633
Sullivan	171	273	98	175	97,643
Tioga	98	110	17	93	44,685
Tompkins	302	392	68	324	147,553
Ulster	797	1,092	207	885	596,938
Warren	78	85	6	79	52,622
Washington	142	157	27	130	85,707
Wayne	192	224	27	197	84,655
Westchester	1,532	1,838	203	1,635	1,367,620
Wyoming	56	67	9	58	23,213
Yates	58	81	17	64	31,470

Note: A breakout of Safety Net Assistance-FNP-Cash and Safety Net Assistance-FNP-Non-Cash data is not available for New York City.

\* May include otherwise Temporary Assistance for Needy Families eligible or otherwise Safety Net Assistance MOE eligible non-disabled two-parent cases.

Table 13  
SAFETY NET ASSISTANCE-FNP-CASH BY MAINTENANCE OF EFFORT STATUS  
Maintenance of Effort (MOE) vs. Non-Maintenance of Effort (Non-MOE)  
Cases, Recipients, Children, Adults and Expenditures by Local District  
October 2014

Local District	Maintenance of Effort (MOE)					Non-Maintenance of Effort (Non-MOE)*				
	Cases	Recipients	Children	Adults	Expenditures	Cases	Recipients	Children	Adults	Expenditures
New York State	See Note	See Note	See Note	See Note	See Note	See Note	See Note	See Note	See Note	See Note
New York City	See Note	See Note	See Note	See Note	See Note	See Note	See Note	See Note	See Note	See Note
Rest of State	1,188	3,936	2,644	1,292	\$929,168	36,580	51,055	10,841	40,214	\$20,900,106
Albany	20	66	45	21	13,669	862	1,409	408	1,001	543,640
Allegany	1	4	2	2	565	154	244	68	176	62,377
Broome	24	74	48	26	15,001	1,082	1,448	279	1,169	536,171
Cattaraugus	10	38	27	11	8,473	200	227	21	206	89,799
Cayuga	8	25	17	8	5,133	301	364	57	307	154,110
Chautauqua	23	73	44	29	10,272	707	1,083	273	810	290,675
Chemung	5	22	16	6	3,611	302	343	67	276	167,363
Chenango	2	5	3	2	879	194	249	53	196	72,050
Clinton	13	37	22	15	6,138	302	349	42	307	181,232
Columbia	4	14	10	4	2,514	181	237	39	198	89,802
Cortland	2	6	4	2	1,340	254	300	37	263	130,349
Delaware	1	5	4	1	1,063	94	104	10	94	47,787
Dutchess	42	124	82	42	29,125	370	439	86	353	235,565
Erie	192	628	424	204	115,500	4,999	8,255	2,383	5,872	2,214,698
Essex	0	0	0	0	0	50	54	6	48	34,766
Franklin	0	0	0	0	0	180	234	40	194	77,542
Fulton	0	0	0	0	0	132	148	17	131	64,226
Genesee	1	3	2	1	562	92	111	16	95	42,943
Greene	4	14	9	5	2,698	166	220	41	179	77,552
Hamilton	0	0	0	0	0	10	12	1	11	2,397
Herkimer	1	2	1	1	491	164	207	32	175	67,557
Jefferson	10	28	18	10	5,353	478	603	90	513	264,500
Lewis	0	0	0	0	0	35	45	7	38	15,283
Livingston	5	20	14	6	4,410	334	429	64	365	159,807
Madison	9	28	18	10	5,609	114	129	18	111	61,132
Monroe	220	761	529	232	170,887	4,396	5,877	1,098	4,779	2,157,339
Montgomery	3	11	7	4	1,855	106	197	64	133	42,298
Nassau	49	110	58	52	37,518	2,559	3,097	359	2,738	1,534,557
Niagara	22	57	31	26	9,781	1,011	1,294	207	1,087	366,551
Oneida	64	233	160	73	43,239	1,663	3,002	961	2,041	775,010
Onondaga	147	539	381	158	91,526	2,943	4,537	1,265	3,272	1,375,637
Ontario	1	5	3	2	171	321	401	62	339	182,558
Orange	37	124	82	42	37,636	843	1,144	209	935	764,095
Orleans	6	20	13	7	4,646	244	332	82	250	109,866
Oswego	21	69	42	27	10,465	635	918	212	706	297,578
Otsego	0	0	0	0	0	105	113	7	106	79,146
Putnam	2	5	4	1	1,502	51	55	2	53	48,395
Rensselaer	2	10	8	2	1,144	396	760	277	483	263,053
Rockland	5	15	10	5	2,103	423	607	143	464	190,229
St. Lawrence	13	49	36	13	6,100	472	721	171	550	194,546
Saratoga	0	0	0	0	0	121	157	45	112	82,554
Schenectady	12	42	31	11	6,850	552	781	191	590	299,516
Schoharie	0	0	0	0	0	81	118	29	89	54,878
Schuyler	6	16	10	6	2,563	96	134	31	103	66,811
Seneca	3	13	10	3	2,539	89	116	23	93	49,234
Steuben	5	23	16	7	1,842	350	451	88	363	163,588
Suffolk	130	458	308	150	208,632	4,003	4,841	576	4,265	3,643,001
Sullivan	4	15	10	5	3,291	167	258	88	170	94,352
Tioga	0	0	0	0	0	98	110	17	93	44,685
Tompkins	3	6	3	3	769	299	386	65	321	146,784
Ulster	8	24	16	8	5,022	789	1,068	191	877	591,916
Warren	0	0	0	0	0	78	85	6	79	52,622
Washington	2	8	6	2	1,672	140	149	21	128	84,035
Wayne	7	18	11	7	2,956	185	206	16	190	81,699
Westchester	39	89	49	40	42,053	1,493	1,749	154	1,595	1,325,567
Wyoming	0	0	0	0	0	56	67	9	58	23,213
Yates	0	0	0	0	0	58	81	17	64	31,470

Note: A breakout of Safety Net Assistance-FNP-Cash and Safety Net Assistance-FNP-Non-Cash data is not available for New York City.

\* The Non-MOE category includes otherwise Temporary Assistance for Needy Families eligible or otherwise Safety Net Assistance MOE eligible non-disabled two-parent cases.



Table 14  
SAFETY NET ASSISTANCE-FNP-NON-CASH TOTAL\*  
Cases, Recipients, Children, Adults and Expenditures by Local District  
October 2014

Local District	Safety Net Assistance-FNP-Non-Cash Total				
	Cases	Recipients	Children	Adults	Expenditures
New York State	See Note	See Note	See Note	See Note	See Note
New York City	See Note	See Note	See Note	See Note	See Note
Rest of State	26,922	57,682	29,753	27,929	\$19,163,484
Albany	672	1,631	931	700	471,889
Allegany	101	171	74	97	51,899
Broome	972	2,030	1,036	994	585,876
Cattaraugus	76	106	40	66	39,611
Cayuga	119	227	101	126	83,113
Chautauqua	690	1,626	873	753	406,173
Chemung	117	230	107	123	73,903
Chenango	36	67	31	36	23,348
Clinton	106	159	55	104	71,329
Columbia	94	167	72	95	73,907
Cortland	169	259	85	174	107,424
Delaware	26	33	7	26	12,701
Dutchess	278	470	209	261	232,767
Erie	3,577	8,454	4,726	3,728	2,043,769
Essex	10	15	7	8	10,325
Franklin	100	200	99	101	53,607
Fulton	39	40	1	39	30,679
Genesee	58	106	47	59	36,179
Greene	101	205	103	102	62,898
Hamilton	3	4	0	4	626
Herkimer	91	141	53	88	52,756
Jefferson	204	285	79	206	125,674
Lewis	16	20	8	12	6,041
Livingston	115	217	97	120	64,895
Madison	72	100	30	70	50,433
Monroe	4,794	10,302	5,349	4,953	3,020,738
Montgomery	80	202	121	81	40,576
Nassau	2,067	4,131	1,999	2,132	1,560,518
Niagara	868	1,764	858	906	420,937
Oneida	874	2,265	1,342	923	512,799
Onondaga	1,120	3,162	1,985	1,177	673,887
Ontario	155	247	97	150	106,594
Orange	791	1,937	1,095	842	786,762
Orleans	182	320	131	189	98,439
Oswego	247	548	282	266	133,182
Otsego	22	25	4	21	16,144
Putnam	33	36	2	34	41,782
Rensselaer	342	1,055	684	371	216,166
Rockland	447	829	346	483	258,304
St. Lawrence	289	576	259	317	159,158
Saratoga	49	49	2	47	37,232
Schenectady	453	1,273	779	494	347,660
Schoharie	27	32	5	27	19,982
Schuyler	33	63	26	37	14,648
Seneca	57	96	39	57	39,249
Steuben	193	398	199	199	105,628
Suffolk	2,310	4,471	2,066	2,405	2,488,939
Sullivan	176	401	219	182	133,125
Tioga	35	50	18	32	30,182
Tompkins	219	388	154	234	109,402
Ulster	487	879	385	494	355,377
Warren	38	41	5	36	33,693
Washington	29	36	6	30	30,603
Wayne	116	154	45	109	91,215
Westchester	2,495	4,908	2,352	2,556	2,473,073
Wyoming	32	51	19	32	16,635
Yates	20	30	9	21	19,033

Note: A breakout of Safety Net Assistance-FNP-Cash and Safety Net Assistance-FNP-Non-Cash data is not available for New York City.

\* May include otherwise Temporary Assistance for Needy Families eligible or otherwise Safety Net Assistance MOE eligible non-disabled two-parent cases.

Table 15  
**SAFETY NET ASSISTANCE-FNP-NON-CASH BY MAINTENANCE OF EFFORT STATUS**  
 Maintenance of Effort (MOE) vs. Non-Maintenance of Effort (Non-MOE)  
 Cases, Recipients, Children, Adults and Expenditures by Local District  
 October 2014

Local District	Maintenance of Effort (MOE)					Non-Maintenance of Effort (Non-MOE)*				
	Cases	Recipients	Children	Adults	Expenditures	Cases	Recipients	Children	Adults	Expenditures
New York State	See Note	See Note	See Note	See Note	See Note	See Note	See Note	See Note	See Note	See Note
New York City	See Note	See Note	See Note	See Note	See Note	See Note	See Note	See Note	See Note	See Note
Rest of State	10,334	36,377	25,781	10,596	\$8,709,322	16,588	21,305	3,972	17,333	\$10,454,162
Albany	322	1,153	823	330	241,758	350	478	108	370	230,131
Allegany	33	98	66	32	18,300	68	73	8	65	33,599
Broome	354	1,235	864	371	238,838	618	795	172	623	347,038
Cattaraugus	10	38	28	10	5,517	66	68	12	56	34,094
Cayuga	33	121	84	37	23,047	86	106	17	89	60,066
Chautauqua	333	1,115	755	360	234,380	357	511	118	393	171,793
Chemung	34	133	96	37	25,856	83	97	11	86	48,047
Chenango	11	42	31	11	6,610	25	25	0	25	16,738
Clinton	22	73	51	22	18,701	84	86	4	82	52,628
Columbia	23	87	62	25	15,847	71	80	10	70	58,060
Cortland	32	108	73	35	22,157	137	151	12	139	85,267
Delaware	2	6	4	2	632	24	27	3	24	12,069
Dutchess	63	222	161	61	58,391	215	248	48	200	174,376
Erie	1,532	5,602	4,038	1,564	973,154	2,045	2,852	688	2,164	1,070,615
Essex	2	6	5	1	1,217	8	9	2	7	9,108
Franklin	38	122	85	37	25,451	62	78	14	64	28,156
Fulton	0	0	0	0	0	39	40	1	39	30,679
Genesee	15	56	39	17	10,817	43	50	8	42	25,362
Greene	35	116	81	35	20,902	66	89	22	67	41,996
Hamilton	0	0	0	0	0	3	4	0	4	626
Herkimer	22	70	50	20	14,281	69	71	3	68	38,475
Jefferson	28	98	68	30	16,434	176	187	11	176	109,240
Lewis	2	6	4	2	658	14	14	4	10	5,383
Livingston	34	108	73	35	24,160	81	109	24	85	40,735
Madison	12	36	24	12	9,043	60	64	6	58	41,390
Monroe	2,047	7,125	5,000	2,125	1,653,876	2,747	3,177	349	2,828	1,366,862
Montgomery	39	143	105	38	19,118	41	59	16	43	21,458
Nassau	796	2,616	1,814	802	812,263	1,271	1,515	185	1,330	748,255
Niagara	289	1,031	730	301	176,318	579	733	128	605	244,619
Oneida	395	1,508	1,111	397	267,615	479	757	231	526	245,184
Onondaga	561	2,170	1,611	559	369,313	559	992	374	618	304,574
Ontario	35	112	77	35	22,146	120	135	20	115	84,448
Orange	358	1,279	916	363	386,643	433	658	179	479	400,119
Orleans	48	159	110	49	34,308	134	161	21	140	64,131
Oswego	84	319	230	89	55,151	163	229	52	177	78,031
Otsego	1	2	1	1	264	21	23	3	20	15,880
Putnam	1	3	2	1	830	32	33	0	33	40,952
Rensselaer	228	798	572	226	124,485	114	257	112	145	91,681
Rockland	64	225	159	66	46,835	383	604	187	417	211,469
St. Lawrence	76	246	168	78	38,758	213	330	91	239	120,400
Saratoga	0	0	0	0	0	49	49	2	47	37,232
Schenectady	238	919	672	247	178,062	215	354	107	247	169,598
Schoharie	2	7	5	2	984	25	25	0	25	18,998
Schuyler	7	23	15	8	2,940	26	40	11	29	11,708
Seneca	12	48	35	13	7,756	45	48	4	44	31,493
Steuben	69	234	160	74	38,430	124	164	39	125	67,198
Suffolk	687	2,510	1,794	716	990,309	1,623	1,961	272	1,689	1,498,630
Sullivan	75	248	175	73	45,100	101	153	44	109	88,025
Tioga	5	20	17	3	2,571	30	30	1	29	27,611
Tompkins	52	189	132	57	28,810	167	199	22	177	80,592
Ulster	144	483	343	140	112,970	343	396	42	354	242,407
Warren	2	4	4	0	1,076	36	37	1	36	32,617
Washington	2	5	3	2	1,061	27	31	3	28	29,542
Wayne	15	43	28	15	8,161	101	111	17	94	83,054
Westchester	1,001	3,222	2,202	1,020	1,270,852	1,494	1,686	150	1,536	1,202,221
Wyoming	7	25	17	8	3,663	25	26	2	24	12,972
Yates	2	10	8	2	2,503	18	20	1	19	16,530

Note: A breakout of Safety Net Assistance-FNP-Cash and Safety Net Assistance-FNP-Non-Cash data is not available for New York City.

\* The Non-MOE category includes otherwise Temporary Assistance for Needy Families eligible or otherwise Safety Net Assistance MOE eligible non-disabled two-parent cases.

Table 16  
**SUPPLEMENTAL NUTRITION ASSISTANCE PROGRAM**  
Households, Persons and Value of Supplemental Nutrition Assistance Program Benefits by Local District  
October 2014

Local District	Total			Temporary Assistance			Non-Temporary Assistance		
	Households	Persons	SNAP Benefits	Households	Persons	SNAP Benefits	Households	Persons	SNAP Benefits
New York State	1,678,096	3,068,825	\$435,393,856	659,315	984,705	\$153,061,499	1,018,781	2,084,120	\$282,332,357
New York City	970,490	1,738,405	258,590,138	441,055	668,151	104,285,101	529,435	1,070,254	154,305,037
Rest of State	707,606	1,330,420	176,803,718	218,260	316,554	48,776,398	489,346	1,013,866	128,027,320
Albany	19,880	37,118	4,944,279	6,102	8,901	1,385,899	13,778	28,217	3,558,380
Allegany	3,454	6,636	791,362	1,148	1,538	238,311	2,306	5,098	553,051
Broome	16,972	31,293	4,125,144	5,973	8,589	1,387,964	10,999	22,704	2,737,180
Cattaraugus	6,446	12,613	1,550,305	1,646	1,972	317,179	4,800	10,641	1,233,126
Cayuga	5,561	10,743	1,370,743	1,412	1,954	308,687	4,149	8,789	1,062,056
Chautauqua	14,099	27,382	3,592,192	4,173	6,707	1,031,869	9,926	20,675	2,560,323
Chemung	8,141	15,899	2,102,161	2,113	2,580	415,925	6,028	13,319	1,686,236
Chenango	4,045	7,875	979,186	1,017	1,274	193,791	3,028	6,601	785,395
Clinton	6,869	11,895	1,499,474	2,177	2,563	407,157	4,692	9,332	1,092,317
Columbia	3,762	6,535	860,064	1,240	1,634	258,126	2,522	4,901	601,938
Cortland	3,773	6,960	874,087	1,102	1,461	232,618	2,671	5,499	641,469
Delaware	3,378	6,663	822,747	832	952	142,032	2,546	5,711	680,715
Dutchess	13,588	24,446	3,293,780	3,589	4,443	695,508	9,999	20,003	2,598,272
Erie	85,186	159,479	21,308,945	27,118	42,574	6,593,444	58,068	116,905	14,715,501
Essex	2,066	3,658	456,400	686	751	119,743	1,380	2,907	336,657
Franklin	4,068	7,469	975,667	1,372	1,741	275,238	2,696	5,728	700,429
Fulton	5,095	9,607	1,220,824	1,292	1,442	240,958	3,803	8,165	979,866
Genesee	3,259	6,044	746,591	859	1,071	170,608	2,400	4,973	575,983
Greene	3,320	5,834	780,421	1,095	1,471	232,213	2,225	4,363	548,208
Hamilton	257	454	57,205	50	68	10,195	207	386	47,010
Herkimer	5,542	10,568	1,329,394	1,226	1,538	254,710	4,316	9,030	1,074,684
Jefferson	8,138	15,411	1,970,881	2,303	2,910	464,913	5,835	12,501	1,505,968
Lewis	1,821	3,574	406,284	397	476	72,062	1,424	3,098	334,222
Livingston	3,988	7,423	961,503	1,225	1,834	293,465	2,763	5,589	668,038
Madison	4,642	9,216	1,189,860	1,003	1,264	204,397	3,639	7,952	985,463
Monroe	66,383	122,391	16,744,114	25,306	39,608	6,109,644	41,077	82,783	10,634,470
Montgomery	4,783	9,832	1,271,412	1,395	2,040	320,446	3,388	7,792	950,966
Nassau	41,801	67,917	9,271,668	16,213	22,467	3,437,027	25,588	45,450	5,834,641
Niagara	18,142	32,884	4,329,471	5,687	8,308	1,303,296	12,455	24,576	3,026,175
Oneida	20,582	41,610	5,382,599	7,371	12,627	1,882,920	13,211	28,983	3,499,679
Onondaga	38,650	74,442	9,788,520	11,998	19,382	2,946,883	26,652	55,060	6,841,637
Ontario	5,709	10,339	1,312,477	1,599	2,111	340,302	4,110	8,228	972,175
Orange	20,864	48,777	6,449,862	5,647	8,503	1,248,989	15,217	40,274	5,200,873
Orleans	3,283	6,324	780,028	1,005	1,499	234,021	2,278	4,825	546,007
Oswego	9,589	20,054	2,561,923	2,698	4,250	661,696	6,891	15,804	1,900,227
Otsego	3,257	6,062	746,346	802	882	140,898	2,455	5,180	605,448
Putnam	1,759	2,763	370,576	534	584	90,961	1,225	2,179	279,615
Rensselaer	9,387	18,769	2,404,527	3,204	5,311	779,102	6,183	13,458	1,625,425
Rockland	17,327	47,723	6,339,098	3,886	5,242	817,424	13,441	42,481	5,521,674
St. Lawrence	8,537	16,737	2,097,007	2,844	3,941	613,186	5,693	12,796	1,483,821
Saratoga	9,004	16,022	2,000,303	1,874	2,049	335,411	7,130	13,973	1,664,892
Schenectady	13,568	25,750	3,514,028	4,417	6,702	1,019,451	9,151	19,048	2,494,577
Schoharie	1,990	3,723	472,568	519	644	102,739	1,471	3,079	369,829
Schuyler	1,293	2,574	299,910	335	520	78,231	958	2,054	221,679
Seneca	1,880	3,568	457,285	543	752	114,252	1,337	2,816	343,033
Steuben	6,211	12,495	1,482,620	1,876	2,668	399,152	4,335	9,827	1,083,468
Suffolk	74,473	127,838	18,008,889	20,211	27,696	4,236,529	54,262	100,142	13,772,360
Sullivan	6,140	12,176	1,651,887	1,809	2,396	373,117	4,331	9,780	1,278,770
Tioga	3,139	6,334	750,200	730	884	139,554	2,409	5,450	610,646
Tompkins	5,247	9,218	1,200,724	1,526	2,011	315,998	3,721	7,207	884,726
Ulster	12,248	21,594	2,927,480	4,128	5,858	920,367	8,120	15,736	2,007,113
Warren	4,050	7,333	903,751	1,072	1,229	199,546	2,978	6,104	704,205
Washington	4,029	7,704	943,803	965	1,157	182,238	3,064	6,547	761,565
Wayne	5,753	10,872	1,348,961	1,541	1,892	305,981	4,212	8,980	1,042,980
Westchester	48,045	85,854	12,082,720	14,593	20,686	3,028,397	33,452	65,168	9,054,323
Wyoming	1,744	3,306	386,344	460	560	90,128	1,284	2,746	296,216
Yates	1,389	2,640	313,118	322	387	61,500	1,067	2,253	251,618

Note: Supplemental Nutrition Assistance Program households containing only Supplemental Security Income recipients or a mix of Temporary Assistance and Supplemental Security Income recipients are counted as Temporary Assistance.

Table 17  
**SUPPLEMENTAL SECURITY INCOME**  
 Recipients, Total Program Expenditures and Federal and State Shares, by Local District  
 October 2014

Local District	Recipients	Expenditures		
		Total	Federal	State
New York State*	707,309	\$408,633,175	\$356,595,614	\$52,037,561
New York City	427,375	251,118,406	221,027,507	30,090,899
Rest of State	274,822	155,601,392	134,040,308	21,561,084
Albany	7,509	4,191,618	3,659,235	532,383
Allegany	1,609	894,595	779,416	115,179
Broome	7,285	4,163,128	3,708,035	455,093
Cattaraugus	2,675	1,447,437	1,258,295	189,142
Cayuga	1,953	1,085,461	918,323	167,138
Chautauqua	5,142	2,884,076	2,508,782	375,294
Chemung	3,609	1,945,896	1,694,723	251,173
Chenango	1,633	862,657	761,521	101,136
Clinton	3,127	1,686,314	1,457,539	228,775
Columbia	1,720	1,010,733	826,726	184,007
Cortland	1,338	721,373	622,498	98,875
Delaware	1,317	690,604	586,213	104,391
Dutchess	5,977	3,449,607	2,798,635	650,972
Erie	30,459	17,677,620	15,448,329	2,229,291
Essex	1,109	608,545	476,055	132,490
Franklin	1,815	1,018,189	859,965	158,224
Fulton	2,213	1,245,446	1,046,726	198,720
Genesee	1,304	741,096	616,753	124,343
Greene	1,510	839,149	731,270	107,879
Hamilton	65	32,999	28,884	4,115
Herkimer	1,797	939,963	806,269	133,694
Jefferson	3,012	1,640,838	1,400,398	240,440
Lewis	659	335,959	292,888	43,071
Livingston	1,293	745,918	668,673	77,245
Madison	1,473	792,852	688,617	104,235
Monroe	27,374	16,599,886	14,651,228	1,948,658
Montgomery	2,053	1,189,642	1,028,624	161,018
Nassau	18,768	10,124,260	8,589,272	1,534,988
Niagara	6,414	3,713,228	3,220,310	492,918
Oneida	8,795	5,039,889	4,438,314	601,575
Onondaga	15,271	9,011,970	8,019,068	992,902
Ontario	1,999	1,097,479	957,138	140,341
Orange	7,421	4,250,665	3,668,727	581,938
Orleans	1,044	557,565	488,353	69,212
Oswego	3,538	2,005,237	1,810,161	195,076
Otsego	1,498	841,024	696,112	144,912
Putnam	929	480,485	388,312	92,173
Rensselaer	4,757	2,803,799	2,407,116	396,683
Rockland	5,534	3,151,730	2,407,480	744,250
St. Lawrence	4,025	2,250,734	1,989,382	261,352
Saratoga	3,183	1,719,325	1,490,703	228,622
Schenectady	5,857	3,409,212	3,003,097	406,115
Schoharie	780	444,022	366,591	77,431
Schuyler	488	265,408	214,406	51,002
Seneca	822	452,642	392,123	60,519
Steuben	3,226	1,764,069	1,555,754	208,315
Suffolk	23,141	12,827,154	10,666,502	2,160,652
Sullivan	2,827	1,549,241	1,251,800	297,441
Tioga	1,273	721,101	640,284	80,817
Tompkins	1,728	968,862	824,448	144,414
Ulster	4,513	2,553,849	2,159,944	393,905
Warren	1,765	922,720	785,271	137,449
Washington	1,710	956,831	829,657	127,174
Wayne	2,313	1,269,339	1,120,182	149,157
Westchester	18,899	10,320,009	8,742,243	1,577,766
Wyoming	715	381,916	333,900	48,016
Yates	559	306,026	259,038	46,988
Mental Hygiene	5,112	1,913,377	1,527,799	385,578

\* Only New York State includes Mental Hygiene

Table 18  
**SUPPLEMENTAL SECURITY INCOME**  
 Recipients by Living Arrangement and Location  
 October 2014

Living Arrangement	New York State	New York City	Rest of State	Mental Hygiene
Living Alone	354,951	232,055	122,892	4
Living With Others	264,608	153,017	111,581	10
Living in Household of Another	27,991	16,699	11,290	2
Congregate Care Level 1	2,649	291	536	1,822
Congregate Care Level 2	26,629	9,659	16,087	883
Congregate Care Level 3	12,628	6,396	6,232	0
Title XIX Institution	12,469	7,530	4,193	746
Other*	5,384	1,839	2,011	1,534
<b>Total</b>	<b>707,309</b>	<b>427,486</b>	<b>274,822</b>	<b>5,001</b>

Table 19  
**SUPPLEMENTAL SECURITY INCOME**  
 Recipients by Living Arrangement and Category of Assistance  
 October 2014

Living Arrangement	Total	Category of Assistance		
		Aged	Blind	Disabled
Living Alone	354,951	95,983	1,456	257,512
Living With Others	264,608	20,078	1,157	243,373
Living in Household of Another	27,991	7,901	190	19,900
Congregate Care Level 1	2,649	79	18	2,552
Congregate Care Level 2	26,629	380	148	26,101
Congregate Care Level 3	12,628	3,836	43	8,749
Title XIX Institution & Other*	17,853	2,589	97	15,167
<b>Total</b>	<b>707,309</b>	<b>130,846</b>	<b>3,109</b>	<b>573,354</b>

\* "Other" includes recipients either a) residing in a private medical facility and Medicaid is paying for less than 50% of the cost of care, b) residing in certain publicly operated residential facilities serving 16 or fewer residents, or c) residing in a public emergency shelter for six calendar months during a nine month period. Such cases receive no state Supplemental Security Income supplement.

Table 20  
CHILD SUPPORT COLLECTIONS (IV-D)  
October 2014

Local District	Total	Current Assistance	Former Assistance	Never Assistance
New York State	\$168,698,810.50	\$6,332,900.87	\$81,622,816.64	\$80,743,092.97
New York City	68,988,354.42	2,930,798.07	35,060,610.24	30,996,946.11
Rest of State	99,710,456.06	3,402,102.80	46,562,206.40	49,746,146.86
Albany	2,624,816.16	71,111.35	1,070,258.49	1,483,446.32
Allegany	569,199.33	27,110.55	363,342.38	178,746.40
Broome	1,552,736.98	88,060.60	796,307.44	668,368.94
Cattaraugus	962,570.18	33,013.33	553,199.97	376,356.88
Cayuga	831,498.16	29,766.15	484,446.74	317,285.27
Chautauqua	1,235,359.22	76,659.38	768,469.56	390,230.28
Chemung	891,561.84	31,108.62	545,797.77	314,655.45
Chenango	472,861.18	15,223.91	268,309.40	189,327.87
Clinton	969,601.70	48,987.30	469,397.63	451,216.77
Columbia	548,301.23	22,614.59	281,833.76	243,852.88
Cortland	450,100.24	24,037.55	258,859.24	167,203.45
Delaware	397,434.30	19,426.26	245,845.35	132,162.69
Dutchess	2,816,621.51	53,542.68	994,354.65	1,768,724.18
Erie	7,335,604.21	346,024.71	4,031,166.62	2,958,412.88
Essex	335,284.36	11,136.72	174,352.09	149,795.55
Franklin	519,156.27	16,329.26	251,954.12	250,872.89
Fulton	629,337.32	15,701.42	414,693.03	198,942.87
Genesee	586,471.78	15,550.46	300,158.73	270,762.59
Greene	455,591.77	14,468.88	206,345.87	234,777.02
Hamilton	27,047.30	278.62	17,098.51	9,670.17
Herkimer	556,568.98	24,339.14	304,140.33	228,089.51
Jefferson	1,395,660.07	44,750.19	540,333.28	810,576.60
Lewis	396,623.98	7,017.78	261,846.37	127,759.83
Livingston	672,071.56	46,139.21	369,120.02	256,812.33
Madison	590,894.61	17,900.07	318,599.10	254,395.44
Monroe	6,414,539.47	316,043.14	3,311,933.67	2,786,562.66
Montgomery	619,779.37	65,463.64	387,219.40	167,096.33
Nassau	9,288,898.73	154,501.70	3,259,267.60	5,875,129.43
Niagara	1,818,698.11	89,600.51	1,070,672.24	658,425.36
Oneida	1,717,926.43	115,313.73	969,953.57	632,659.13
Onondaga	4,239,662.13	131,836.17	2,378,124.47	1,729,701.49
Ontario	1,113,346.67	38,460.98	559,890.04	514,995.65
Orange	3,789,002.30	116,609.78	1,468,219.62	2,204,172.90
Orleans	421,288.38	20,412.58	242,136.86	158,738.94
Oswego	1,393,611.12	69,592.85	805,907.32	518,110.95
Otsego	428,521.12	8,157.85	198,209.31	222,153.96
Putnam	797,848.23	8,356.50	256,472.87	533,018.86
Rensselaer	1,835,503.98	93,903.82	765,081.69	976,518.47
Rockland	2,506,289.29	59,647.86	1,001,366.08	1,445,275.35
St. Lawrence	1,146,741.52	47,736.26	705,811.37	393,193.89
Saratoga	1,905,409.81	22,677.36	792,013.34	1,090,719.11
Schenectady	1,539,029.02	41,628.04	643,584.84	853,816.14
Schoharie	353,529.66	13,362.89	193,634.13	146,532.64
Schuyler	196,205.81	9,178.77	129,838.03	57,189.01
Seneca	346,001.85	14,105.17	181,492.24	150,404.44
Steuben	1,053,830.45	35,967.32	617,896.34	399,966.79
Suffolk	14,684,926.07	370,653.12	6,394,312.26	7,919,960.69
Sullivan	908,531.54	29,025.29	400,884.65	478,621.60
Tioga	542,052.61	25,128.89	308,810.75	208,112.97
Tompkins	717,117.11	33,001.19	335,256.43	348,859.49
Ulster	1,752,173.08	88,107.69	803,549.45	860,515.94
Warren	893,219.53	20,930.81	421,294.67	450,994.05
Washington	763,354.41	24,731.31	400,376.70	338,246.40
Wayne	975,913.62	24,814.00	466,720.27	484,379.35
Westchester	7,070,216.98	192,938.89	2,483,461.06	4,393,817.03
Wyoming	460,213.74	14,537.04	204,168.91	241,507.79
Yates	194,099.68	5,378.92	114,415.77	74,304.99

Table 21  
**AGGREGATE CLAIMS**  
**TOTAL TEMPORARY ASSISTANCE**  
Family Assistance and Safety Net Assistance  
October 2014

Month	New York State			New York City			Rest of State		
	Recipients	Net Expenditures	Monthly Average Payment	Recipients	Net Expenditures	Monthly Average Payment	Recipients	Net Expenditures	Monthly Average Payment
November 2012	571,304	\$214,326,857	\$375.15	347,923	\$148,558,088	\$426.99	223,381	\$65,768,769	\$294.42
December 2012	581,005	\$302,255,608	\$520.23	356,465	\$229,721,378	\$644.44	224,540	\$72,534,230	\$323.03
January 2013	585,685	\$238,536,446	\$407.28	359,214	\$171,039,712	\$476.15	226,471	\$67,496,734	\$298.04
February 2013	584,874	\$226,399,716	\$387.09	357,200	\$158,355,307	\$443.32	227,674	\$68,044,409	\$298.87
March 2013	585,762	\$218,825,901	\$373.57	357,234	\$150,189,997	\$420.42	228,528	\$68,635,904	\$300.34
April 2013	589,725	\$229,924,511	\$389.88	359,652	\$158,688,921	\$441.23	230,073	\$71,235,590	\$309.62
May 2013	587,316	\$232,005,475	\$395.03	356,604	\$159,988,278	\$448.64	230,712	\$72,017,197	\$312.15
June 2013	580,109	\$226,899,391	\$391.13	352,026	\$158,719,819	\$450.88	228,083	\$68,179,572	\$298.92
July 2013	576,355	\$211,426,179	\$366.83	347,892	\$143,454,205	\$412.35	228,463	\$67,971,974	\$297.52
August 2013	573,835	\$210,360,299	\$366.59	345,020	\$142,617,183	\$413.36	228,815	\$67,743,116	\$296.06
September 2013	569,174	\$227,485,747	\$399.68	341,812	\$160,904,569	\$470.74	227,362	\$66,581,178	\$292.84
October 2013	573,292	\$222,891,580	\$388.79	342,337	\$153,692,785	\$448.95	230,955	\$69,198,795	\$299.62
November 2013	568,983	\$218,665,959	\$384.31	340,896	\$151,876,636	\$445.52	228,087	\$66,789,323	\$292.82
December 2013	566,424	\$284,303,969	\$501.93	339,513	\$209,886,676	\$618.20	226,911	\$74,417,293	\$327.96
January 2014	560,991	\$217,920,198	\$388.46	333,708	\$150,620,722	\$451.35	227,283	\$67,299,476	\$296.10
February 2014	561,525	\$210,100,410	\$374.16	333,162	\$140,749,161	\$422.46	228,363	\$69,351,249	\$303.69
March 2014	566,456	\$228,183,391	\$402.83	334,732	\$155,317,544	\$464.01	231,724	\$72,865,847	\$314.45
April 2014	565,463	\$233,259,990	\$412.51	332,074	\$158,003,253	\$475.81	233,389	\$75,256,737	\$322.45
May 2014	564,612	\$219,692,156	\$389.10	330,872	\$144,710,332	\$437.36	233,740	\$74,981,824	\$320.79
June 2014	563,201	\$223,560,715	\$396.95	331,315	\$151,506,837	\$457.29	231,886	\$72,053,878	\$310.73
July 2014	562,676	\$217,050,586	\$385.75	331,407	\$147,863,357	\$446.17	231,269	\$69,187,229	\$299.16
August 2014	565,719	\$204,112,783	\$360.80	336,383	\$134,766,087	\$400.63	229,336	\$69,346,696	\$302.38
September 2014	567,809	\$227,894,184	\$401.36	339,380	\$158,999,022	\$468.50	228,429	\$68,895,162	\$301.60
October 2014	571,842	\$237,111,251	\$414.64	339,804	\$170,327,854	\$501.25	232,038	\$66,783,397	\$287.81

Note: Data pursuant to a New York State Legislative mandate S. 6057-B/A. 9557-B, Chapter 57, L. 2004.

Based on local district claims submitted on claims Schedules A and C. Includes reimbursable expenditures for basic assistance, rent supplements, family shelters, domestic violence shelters, security deposits, transitional services, diversion transportation, diversion payments, and other non-assistance. These claims are net of cancellations and refunds, and include any reconciliations and supplemental claims applied to the month after initial expenditure reporting is done. Thus, these data differ from the expenditure data presented elsewhere in this document, which are derived from original payment issuance activity during the month, net of cancellations and refunds in that month.

District claiming activity for recent months is generally not complete before the statutorily required due date for this report. Thus, claims for recent months may appear substantially below those for earlier months. Claims tables in future months of this report will continue to include the historical periods above, adjusted for claiming activity occurring subsequent to this report.

Table 22  
**AGGREGATE CLAIMS**  
**FEDERALLY PARTICIPATING - TANF**  
**Family Assistance-FP and Safety Net Assistance-FP**  
**October 2014**

Month	New York State			New York City			Rest of State		
	Recipients	Net Expenditures	Monthly Average Payment	Recipients	Net Expenditures	Monthly Average Payment	Recipients	Net Expenditures	Monthly Average Payment
November 2012	259,619	\$89,913,122	\$346.33	139,414	\$56,424,026	\$404.72	120,205	\$33,489,096	\$278.60
December 2012	263,831	\$162,329,567	\$615.28	143,558	\$124,886,770	\$869.94	120,273	\$37,442,797	\$311.32
January 2013	262,170	\$108,274,130	\$412.99	141,976	\$74,803,776	\$526.88	120,194	\$33,470,354	\$278.47
February 2013	261,491	\$98,041,269	\$374.93	141,314	\$64,505,287	\$456.47	120,177	\$33,535,982	\$279.05
March 2013	259,524	\$103,364,886	\$398.29	139,783	\$69,652,596	\$498.29	119,741	\$33,712,290	\$281.54
April 2013	260,660	\$101,492,686	\$389.37	140,974	\$66,368,426	\$470.78	119,686	\$35,124,260	\$293.47
May 2013	259,401	\$99,347,713	\$382.99	138,701	\$63,963,986	\$461.16	120,700	\$35,383,727	\$293.15
June 2013	266,926	\$105,716,022	\$396.05	147,058	\$71,922,281	\$489.07	119,868	\$33,793,741	\$281.92
July 2013	264,767	\$90,319,986	\$341.13	144,851	\$57,077,984	\$394.05	119,916	\$33,242,002	\$277.21
August 2013	265,230	\$89,152,840	\$336.13	144,486	\$55,672,931	\$385.32	120,744	\$33,479,909	\$277.28
September 2013	263,064	\$105,076,851	\$399.43	142,765	\$71,623,613	\$501.69	120,299	\$33,453,238	\$278.08
October 2013	265,039	\$97,345,794	\$367.29	143,191	\$62,967,599	\$439.75	121,848	\$34,378,195	\$282.14
November 2013	261,958	\$96,127,899	\$366.96	141,744	\$63,281,911	\$446.45	120,214	\$32,845,988	\$273.23
December 2013	260,468	\$134,680,423	\$517.07	141,437	\$97,225,183	\$687.41	119,031	\$37,455,240	\$314.67
January 2014	256,124	\$95,355,999	\$372.30	137,459	\$62,390,603	\$453.89	118,665	\$32,965,396	\$277.80
February 2014	255,541	\$89,422,412	\$349.93	136,833	\$56,115,950	\$410.11	118,708	\$33,306,462	\$280.57
March 2014	255,898	\$100,884,459	\$394.24	136,966	\$65,651,317	\$479.33	118,932	\$35,233,142	\$296.25
April 2014	253,936	\$100,956,353	\$397.57	134,985	\$64,926,898	\$480.99	118,951	\$36,029,455	\$302.89
May 2014	253,505	\$92,440,031	\$364.65	134,113	\$57,980,291	\$432.32	119,392	\$34,459,740	\$288.63
June 2014	253,465	\$101,549,163	\$400.64	134,148	\$67,127,844	\$500.40	119,317	\$34,421,319	\$288.49
July 2014	252,643	\$88,882,394	\$351.81	133,462	\$55,599,258	\$416.59	119,181	\$33,283,136	\$279.27
August 2014	254,875	\$83,741,076	\$328.56	136,240	\$50,378,086	\$369.77	118,635	\$33,362,990	\$281.22
September 2014	254,656	\$98,785,435	\$387.92	136,630	\$65,137,187	\$476.74	118,026	\$33,648,248	\$285.09
October 2014	255,720	\$101,393,689	\$396.50	136,355	\$69,706,880	\$511.22	119,365	\$31,686,809	\$265.46

Note: Data pursuant to a New York State Legislative mandate S. 6057-B/A. 9557-B, Chapter 57, L. 2004.

Based on local district claims submitted on claims Schedules A and C. Includes reimbursable expenditures for basic assistance, rent supplements, family shelters, domestic violence shelters, security deposits, transitional services, diversion transportation, diversion payments, and other non-assistance. These claims are net of cancellations and refunds, and include any reconciliations and supplemental claims applied to the month after initial expenditure reporting is done. Thus, these data differ from the expenditure data presented elsewhere in this document, which are derived from original payment issuance activity during the month, net of cancellations and refunds in that month.

District claiming activity for recent months is generally not complete before the statutorily required due date for this report. Thus, claims for recent months may appear substantially below those for earlier months. Claims tables in future months of this report will continue to include the historical periods above, adjusted for claiming activity occurring subsequent to this report.



Table 23  
**AGGREGATE CLAIMS**  
**FEDERALLY NON-PARTICIPATING**  
**Safety Net Assistance-FNP Maintenance of Effort**  
**October 2014**

Month	New York State			New York City			Rest of State		
	Recipients	Net Expenditures	Monthly Average Payment	Recipients	Net Expenditures	Monthly Average Payment	Recipients	Net Expenditures	Monthly Average Payment
November 2012	122,038	\$32,085,413	\$262.91	86,416	\$24,413,892	\$282.52	35,622	\$7,671,521	\$215.36
December 2012	123,529	\$36,495,635	\$295.44	87,237	\$28,275,393	\$324.12	36,292	\$8,220,242	\$226.50
January 2013	125,540	\$38,743,759	\$308.62	88,956	\$30,481,386	\$342.66	36,584	\$8,262,373	\$225.85
February 2013	124,851	\$36,130,991	\$289.39	88,079	\$27,528,668	\$312.55	36,772	\$8,602,323	\$233.94
March 2013	127,575	\$30,026,618	\$235.36	90,723	\$21,776,180	\$240.03	36,852	\$8,250,438	\$223.88
April 2013	127,116	\$38,705,045	\$304.49	90,049	\$29,825,647	\$331.22	37,067	\$8,879,398	\$239.55
May 2013	126,753	\$38,944,721	\$307.25	89,559	\$30,063,718	\$335.69	37,194	\$8,881,003	\$238.78
June 2013	116,556	\$31,079,711	\$266.65	79,424	\$23,033,165	\$290.00	37,132	\$8,046,546	\$216.70
July 2013	116,391	\$32,899,994	\$282.67	78,992	\$24,451,850	\$309.55	37,399	\$8,448,144	\$225.89
August 2013	117,690	\$30,713,124	\$260.97	80,021	\$22,284,105	\$278.48	37,669	\$8,429,019	\$223.77
September 2013	117,493	\$41,604,989	\$354.11	79,627	\$33,179,665	\$416.69	37,866	\$8,425,324	\$222.50
October 2013	116,490	\$35,690,808	\$306.39	78,167	\$26,775,317	\$342.54	38,323	\$8,915,491	\$232.64
November 2013	118,437	\$34,340,355	\$289.95	80,274	\$25,654,665	\$319.59	38,163	\$8,685,690	\$227.59
December 2013	117,452	\$51,946,222	\$442.28	78,754	\$42,551,530	\$540.31	38,698	\$9,394,692	\$242.77
January 2014	116,278	\$35,308,552	\$303.66	77,255	\$26,504,400	\$343.08	39,023	\$8,804,152	\$225.61
February 2014	116,505	\$31,251,811	\$268.24	77,327	\$22,124,863	\$286.12	39,178	\$9,126,948	\$232.96
March 2014	117,670	\$41,140,089	\$349.62	78,426	\$31,555,885	\$402.37	39,244	\$9,584,204	\$244.22
April 2014	114,869	\$37,590,471	\$327.25	75,862	\$27,432,360	\$361.61	39,007	\$10,158,111	\$260.42
May 2014	114,478	\$33,510,002	\$292.72	75,265	\$24,181,272	\$321.28	39,213	\$9,328,730	\$237.90
June 2014	114,786	\$39,007,843	\$339.83	75,107	\$29,713,919	\$395.62	39,679	\$9,293,924	\$234.23
July 2014	114,537	\$33,265,243	\$290.43	74,604	\$24,145,121	\$323.64	39,933	\$9,120,122	\$228.39
August 2014	116,548	\$29,348,374	\$251.81	77,266	\$20,625,986	\$266.95	39,282	\$8,722,388	\$222.05
September 2014	117,457	\$39,878,186	\$339.51	77,600	\$30,949,827	\$398.84	39,857	\$8,928,359	\$224.01
October 2014	117,954	\$36,264,163	\$307.44	77,641	\$27,254,967	\$351.04	40,313	\$9,009,196	\$223.48

Note: Data pursuant to a New York State Legislative mandate S. 6057-B/A. 9557-B, Chapter 57, L. 2004.

Based on local district claims submitted on claims Schedules A and C. Includes reimbursable expenditures for basic assistance, rent supplements, family shelters, domestic violence shelters, security deposits, transitional services, diversion transportation, diversion payments, and other non-assistance. These claims are net of cancellations and refunds, and include any reconciliations and supplemental claims applied to the month after initial expenditure reporting is done. Thus, these data differ from the expenditure data presented elsewhere in this document, which are derived from original payment issuance activity during the month, net of cancellations and refunds in that month.

District claiming activity for recent months is generally not complete before the statutorily required due date for this report. Thus, claims for recent months may appear substantially below those for earlier months. Claims tables in future months of this report will continue to include the historical periods above, adjusted for claiming activity occurring subsequent to this report.

Table 24  
**AGGREGATE CLAIMS**  
**FEDERALLY NON-PARTICIPATING**  
Safety Net Assistance-FNP and Family Assistance-FNP Non-Maintenance of Effort  
October 2014

Month	New York State			New York City			Rest of State		
	Recipients	Net Expenditures	Monthly Average Payment	Recipients	Net Expenditures	Monthly Average Payment	Recipients	Net Expenditures	Monthly Average Payment
November 2012	189,647	\$92,328,322	\$486.84	122,093	\$67,720,170	\$554.66	67,554	\$24,608,152	\$364.27
December 2012	193,645	\$103,430,406	\$534.12	125,670	\$76,559,215	\$609.21	67,975	\$26,871,191	\$395.31
January 2013	197,975	\$91,518,557	\$462.27	128,282	\$65,754,550	\$512.58	69,693	\$25,764,007	\$369.68
February 2013	198,532	\$92,227,456	\$464.55	127,807	\$66,321,352	\$518.92	70,725	\$25,906,104	\$366.29
March 2013	198,663	\$85,434,397	\$430.05	126,728	\$58,761,221	\$463.68	71,935	\$26,673,176	\$370.80
April 2013	201,949	\$89,726,780	\$444.30	128,629	\$62,494,848	\$485.85	73,320	\$27,231,932	\$371.41
May 2013	201,162	\$93,713,041	\$465.86	128,344	\$65,960,574	\$513.94	72,818	\$27,752,467	\$381.12
June 2013	196,627	\$90,103,658	\$458.25	125,544	\$63,764,373	\$507.90	71,083	\$26,339,285	\$370.54
July 2013	195,197	\$88,206,199	\$451.88	124,049	\$61,924,371	\$499.19	71,148	\$26,281,828	\$369.40
August 2013	190,915	\$90,494,335	\$474.00	120,513	\$64,660,147	\$536.54	70,402	\$25,834,188	\$366.95
September 2013	188,617	\$80,803,907	\$428.40	119,420	\$56,101,291	\$469.78	69,197	\$24,702,616	\$356.99
October 2013	191,763	\$89,854,978	\$468.57	120,979	\$63,949,869	\$528.60	70,784	\$25,905,109	\$365.97
November 2013	188,588	\$88,197,705	\$467.67	118,878	\$62,940,060	\$529.45	69,710	\$25,257,645	\$362.32
December 2013	188,504	\$97,677,324	\$518.17	119,322	\$70,109,963	\$587.57	69,182	\$27,567,361	\$398.48
January 2014	188,589	\$87,255,647	\$462.68	118,994	\$61,725,719	\$518.73	69,595	\$25,529,928	\$366.84
February 2014	189,479	\$89,426,187	\$471.96	119,002	\$62,508,348	\$525.27	70,477	\$26,917,839	\$381.94
March 2014	192,888	\$86,158,843	\$446.68	119,340	\$58,110,342	\$486.93	73,548	\$28,048,501	\$381.36
April 2014	196,658	\$94,713,166	\$481.61	121,227	\$65,643,995	\$541.50	75,431	\$29,069,171	\$385.37
May 2014	196,629	\$93,742,123	\$476.75	121,494	\$62,548,769	\$514.83	75,135	\$31,193,354	\$415.16
June 2014	194,950	\$83,003,709	\$425.77	122,060	\$54,665,074	\$447.85	72,890	\$28,338,635	\$388.79
July 2014	195,496	\$94,902,949	\$485.45	123,341	\$68,118,978	\$552.28	72,155	\$26,783,971	\$371.20
August 2014	194,296	\$91,023,333	\$468.48	122,877	\$63,762,015	\$518.91	71,419	\$27,261,318	\$381.71
September 2014	195,696	\$89,230,563	\$455.97	125,150	\$62,912,008	\$502.69	70,546	\$26,318,555	\$373.07
October 2014	198,168	\$99,453,399	\$501.86	125,808	\$73,366,007	\$583.16	72,360	\$26,087,392	\$360.52

Note: Data pursuant to a New York State Legislative mandate S. 6057-B/A. 9557-B, Chapter 57, L. 2004.

Based on local district claims submitted on claims Schedules A and C. Includes reimbursable expenditures for basic assistance, rent supplements, family shelters, domestic violence shelters, security deposits, transitional services, diversion transportation, diversion payments, and other non-assistance. These claims are net of cancellations and refunds, and include any reconciliations and supplemental claims applied to the month after initial expenditure reporting is done. Thus, these data differ from the expenditure data presented elsewhere in this document, which are derived from original payment issuance activity during the month, net of cancellations and refunds in that month.

District claiming activity for recent months is generally not complete before the statutorily required due date for this report. Thus, claims for recent months may appear substantially below those for earlier months. Claims tables in future months of this report will continue to include the historical periods above, adjusted for claiming activity occurring subsequent to this report.

Table 25  
HOME ENERGY ASSISTANCE PROGRAM\*  
Number and Dollar Amount of Benefits Authorized and Administrative Allocations - Federal Fiscal Year to Date  
October 2014

Local District	Benefits Authorized		Administrative Allocations
	Number	Dollar Amount	
New York State	487,918	\$129,504,569	\$19,198,136
New York City	0	0	5,173,161
Rest of State	487,918	129,504,569	14,024,975
Albany	14,568	3,310,192	243,078
Allegany	2,546	1,017,289	138,945
Broome	11,985	3,370,690	321,348
Cattaraugus	6,019	2,154,140	230,836
Cayuga	4,013	1,428,945	146,043
Chautauqua	10,186	3,378,756	347,265
Chemung	6,101	1,495,114	136,616
Chenango	3,167	1,318,587	163,864
Clinton	5,566	2,538,640	282,493
Columbia	2,932	958,430	105,630
Cortland	2,806	883,382	106,439
Delaware	3,032	1,266,071	141,216
Dutchess	9,750	2,169,107	239,627
Erie	64,603	17,784,632	2,404,000
Essex	1,748	741,902	88,777
Franklin	3,418	1,457,062	190,923
Fulton	4,085	1,512,719	188,772
Genesee	2,696	785,908	89,110
Greene	2,803	1,095,944	133,895
Hamilton	255	106,949	12,167
Herkimer	4,764	1,686,903	176,938
Jefferson	6,365	2,180,456	219,402
Lewis	1,576	761,231	89,794
Livingston	3,100	1,141,264	112,426
Madison	3,254	1,165,352	149,048
Monroe	46,290	9,914,862	705,604
Montgomery	3,759	1,359,520	150,507
Nassau	20,698	2,478,657	243,040
Niagara	13,860	3,717,579	368,624
Oneida	15,482	4,690,576	584,020
Onondaga	26,601	6,614,659	538,547
Ontario	4,373	1,207,075	115,374
Orange	12,412	2,956,510	341,830
Orleans	2,199	911,034	100,913
Oswego	6,702	2,695,158	247,674
Otsego	2,917	1,209,012	152,763
Putnam	1,250	290,910	36,266
Rensselaer	6,804	1,838,228	191,282
Rockland	11,763	1,958,859	155,821
St. Lawrence	6,715	2,660,541	368,087
Saratoga	6,918	2,479,909	288,124
Schenectady	8,520	2,138,783	187,910
Schoharie	1,561	677,536	98,740
Schuyler	1,073	480,982	60,928
Seneca	1,417	416,234	60,002
Steuben	4,546	1,618,708	258,257
Suffolk	34,149	8,731,492	813,253
Sullivan	3,941	1,052,737	197,575
Tioga	2,626	1,145,965	127,020
Tompkins	3,868	925,311	96,438
Ulster	9,892	2,854,314	363,049
Warren	3,088	1,071,490	145,876
Washington	3,003	1,275,901	147,770
Wayne	4,474	1,585,720	118,205
Westchester	32,752	1,786,210	192,045
Wyoming	1,688	613,108	63,412
Yates	1,239	437,324	47,367

\* Please Note: The 2015 Home Energy Assistance Program Federal Fiscal Year is October 1, 2014 through September 30, 2015.

Table 26  
**HOME ENERGY ASSISTANCE PROGRAM - NON-EMERGENCY\***  
 Number, Total Dollar Amount and Average Dollar Amount of Benefits Authorized - Federal Fiscal Year to Date  
 October 2014

Local District	Autopay			Regular Non-Autopay		
	Benefits Authorized	Dollar Amount Authorized	Average Dollar Amount	Benefits Authorized	Dollar Amount Authorized	Average Dollar Amount
New York State	442,137	\$108,778,704	\$246	45,781	\$20,725,865	\$453
New York City	0	0	0	0	0	0
Rest of State	442,137	108,778,704	246	45,781	20,725,865	453
Albany	13,510	2,872,318	213	1,058	437,874	414
Allegany	2,225	856,135	385	321	161,154	502
Broome	10,714	2,837,083	265	1,271	533,607	420
Cattaraugus	4,831	1,616,736	335	1,188	537,404	452
Cayuga	3,422	1,145,103	335	591	283,842	480
Chautauqua	8,944	2,870,779	321	1,242	507,977	409
Chemung	5,265	1,157,371	220	836	337,743	404
Chenango	2,451	926,460	378	716	392,127	548
Clinton	4,715	2,072,556	440	851	466,084	548
Columbia	2,669	818,369	307	263	140,061	533
Cortland	2,442	721,389	295	364	161,993	445
Delaware	2,360	900,924	382	672	365,147	543
Dutchess	9,355	1,958,799	209	395	210,308	532
Erie	56,239	14,587,736	259	8,364	3,196,896	382
Essex	1,287	481,865	374	461	260,037	564
Franklin	2,806	1,104,917	394	612	352,145	575
Fulton	3,406	1,167,694	343	679	345,025	508
Genesee	2,417	665,531	275	279	120,377	431
Greene	2,239	784,565	350	564	311,379	552
Hamilton	181	62,774	347	74	44,175	597
Herkimer	3,860	1,256,552	326	904	430,351	476
Jefferson	5,617	1,819,315	324	748	361,141	483
Lewis	1,241	573,066	462	335	188,165	562
Livingston	2,658	937,469	353	442	203,795	461
Madison	2,807	939,112	335	447	226,240	506
Monroe	44,535	9,295,604	209	1,755	619,258	353
Montgomery	3,163	1,066,515	337	596	293,005	492
Nassau	20,009	2,235,818	112	689	242,839	352
Niagara	12,428	3,134,436	252	1,432	583,143	407
Oneida	13,649	3,866,133	283	1,833	824,443	450
Onondaga	24,158	5,645,215	234	2,443	969,444	397
Ontario	4,053	1,063,913	263	320	143,162	447
Orange	11,562	2,560,800	221	850	395,710	466
Orleans	1,742	698,000	401	457	213,034	466
Oswego	5,991	2,335,971	390	711	359,187	505
Otsego	2,263	846,323	374	654	362,689	555
Putnam	1,157	245,485	212	93	45,425	488
Rensselaer	6,148	1,516,193	247	656	322,035	491
Rockland	11,503	1,862,448	162	260	96,411	371
St. Lawrence	5,624	2,082,758	370	1,091	577,783	530
Saratoga	6,295	2,171,090	345	623	308,819	496
Schenectady	8,390	2,085,268	249	130	53,515	412
Schoharie	1,420	601,901	424	141	75,635	536
Schuyler	824	347,607	422	249	133,375	536
Seneca	1,338	377,559	282	79	38,675	490
Steuben	3,959	1,345,854	340	587	272,854	465
Suffolk	31,878	7,602,439	238	2,271	1,129,053	497
Sullivan	3,880	1,017,782	262	61	34,955	573
Tioga	2,154	900,037	418	472	245,928	521
Tompkins	3,657	840,256	230	211	85,055	403
Ulster	9,067	2,397,999	264	825	456,315	553
Warren	2,817	932,501	331	271	138,989	513
Washington	2,352	927,293	394	651	348,608	535
Wayne	3,967	1,347,038	340	507	238,682	471
Westchester	32,159	1,515,338	47	593	270,872	457
Wyoming	1,286	437,578	340	402	175,530	437
Yates	1,048	340,934	325	191	96,390	505

\* Please Note: The 2015 Home Energy Assistance Program Federal Fiscal Year is October 1, 2014 through September 30, 2015.

Table 27  
**HOME ENERGY ASSISTANCE PROGRAM - EMERGENCY\***  
 Number, Total Dollar Amount and Average Dollar Amount of Benefits Authorized - Federal Fiscal Year to Date  
 October 2014

Local District	Emergency			Furnace Replacement			Furnace Repair & Repair/Replacement Estimates		
	Benefits Authorized	Dollar Amount Authorized	Average Dollar Amount	Benefits Authorized	Dollar Amount Authorized	Average Dollar Amount	Benefits Authorized	Dollar Amount Authorized	Average Dollar Amount
New York State	0	\$0	\$0	0	\$0	\$0	0	\$0	\$0
New York City	0	0	0	0	0	0	0	0	0
Rest of State	0	0	0	0	0	0	0	0	0
Albany	0	0	0	0	0	0	0	0	0
Allegany	0	0	0	0	0	0	0	0	0
Broome	0	0	0	0	0	0	0	0	0
Cattaraugus	0	0	0	0	0	0	0	0	0
Cayuga	0	0	0	0	0	0	0	0	0
Chautauqua	0	0	0	0	0	0	0	0	0
Chemung	0	0	0	0	0	0	0	0	0
Chenango	0	0	0	0	0	0	0	0	0
Clinton	0	0	0	0	0	0	0	0	0
Columbia	0	0	0	0	0	0	0	0	0
Cortland	0	0	0	0	0	0	0	0	0
Delaware	0	0	0	0	0	0	0	0	0
Dutchess	0	0	0	0	0	0	0	0	0
Erie	0	0	0	0	0	0	0	0	0
Essex	0	0	0	0	0	0	0	0	0
Franklin	0	0	0	0	0	0	0	0	0
Fulton	0	0	0	0	0	0	0	0	0
Genesee	0	0	0	0	0	0	0	0	0
Greene	0	0	0	0	0	0	0	0	0
Hamilton	0	0	0	0	0	0	0	0	0
Herkimer	0	0	0	0	0	0	0	0	0
Jefferson	0	0	0	0	0	0	0	0	0
Lewis	0	0	0	0	0	0	0	0	0
Livingston	0	0	0	0	0	0	0	0	0
Madison	0	0	0	0	0	0	0	0	0
Monroe	0	0	0	0	0	0	0	0	0
Montgomery	0	0	0	0	0	0	0	0	0
Nassau	0	0	0	0	0	0	0	0	0
Niagara	0	0	0	0	0	0	0	0	0
Oneida	0	0	0	0	0	0	0	0	0
Onondaga	0	0	0	0	0	0	0	0	0
Ontario	0	0	0	0	0	0	0	0	0
Orange	0	0	0	0	0	0	0	0	0
Orleans	0	0	0	0	0	0	0	0	0
Oswego	0	0	0	0	0	0	0	0	0
Otsego	0	0	0	0	0	0	0	0	0
Putnam	0	0	0	0	0	0	0	0	0
Rensselaer	0	0	0	0	0	0	0	0	0
Rockland	0	0	0	0	0	0	0	0	0
St. Lawrence	0	0	0	0	0	0	0	0	0
Saratoga	0	0	0	0	0	0	0	0	0
Schenectady	0	0	0	0	0	0	0	0	0
Schoharie	0	0	0	0	0	0	0	0	0
Schuyler	0	0	0	0	0	0	0	0	0
Seneca	0	0	0	0	0	0	0	0	0
Steuben	0	0	0	0	0	0	0	0	0
Suffolk	0	0	0	0	0	0	0	0	0
Sullivan	0	0	0	0	0	0	0	0	0
Tioga	0	0	0	0	0	0	0	0	0
Tompkins	0	0	0	0	0	0	0	0	0
Ulster	0	0	0	0	0	0	0	0	0
Warren	0	0	0	0	0	0	0	0	0
Washington	0	0	0	0	0	0	0	0	0
Wayne	0	0	0	0	0	0	0	0	0
Westchester	0	0	0	0	0	0	0	0	0
Wyoming	0	0	0	0	0	0	0	0	0
Yates	0	0	0	0	0	0	0	0	0

\* Please Note: The 2015 Home Energy Assistance Program Federal Fiscal Year is October 1, 2014 through September 30, 2015.

Table 28  
**FEDERAL ALL FAMILIES WORK PARTICIPATION RATES**  
TANF, Safety Net Assistance MOE and Combined TANF and Safety Net Assistance MOE  
October 2014

Local District	Combined TANF and Safety Net Assistance MOE			TANF			Safety Net Assistance MOE		
	Rate	Numerator	Denominator	Rate	Numerator	Denominator	Rate	Numerator	Denominator
New York State*	31.0%	27,652	89,289	28.9%	16,493	57,124	34.7%	11,159	32,165
New York City*	35.5%	17,651	49,791	34.8%	10,087	28,913	35.9%	7,565	20,878
Rest of State	24.4%	8,541	35,065	23.5%	5,831	24,790	26.4%	2,710	10,275
Albany	21.5%	209	972	21.1%	145	688	22.5%	64	284
Allegany	21.7%	33	152	21.2%	25	118	23.5%	8	34
Broome	18.3%	194	1,058	18.5%	131	710	18.1%	63	348
Cattaraugus	22.5%	23	102	23.5%	20	85	17.6%	3	17
Cayuga	15.6%	35	224	14.1%	26	184	22.5%	9	40
Chautauqua	22.7%	211	929	22.2%	138	622	23.8%	73	307
Chemung	15.3%	24	157	13.5%	17	126	22.6%	7	31
Chenango	12.5%	13	104	12.0%	11	92	16.7%	2	12
Clinton	17.3%	29	168	19.1%	26	136	9.4%	3	32
Columbia	21.3%	35	164	21.8%	31	142	18.2%	4	22
Cortland	16.2%	25	154	15.1%	18	119	20.0%	7	35
Delaware	20.4%	11	54	22.0%	11	50	0.0%	0	4
Dutchess	9.4%	28	298	6.6%	14	213	16.5%	14	85
Erie	39.3%	2,025	5,153	37.3%	1,334	3,580	43.9%	691	1,573
Essex	21.7%	5	23	23.8%	5	21	0.0%	0	2
Franklin	14.5%	21	145	13.6%	15	110	17.1%	6	35
Fulton	42.4%	25	59	42.4%	25	59	N/A	0	0
Genesee	21.7%	18	83	17.4%	12	69	42.9%	6	14
Greene	40.2%	47	117	38.8%	33	85	43.8%	14	32
Hamilton	0.0%	0	5	0.0%	0	5	N/A	0	0
Herkimer	13.1%	16	122	11.7%	12	103	21.1%	4	19
Jefferson	17.5%	40	228	19.1%	38	199	6.9%	2	29
Lewis	10.5%	2	19	11.8%	2	17	0.0%	0	2
Livingston	15.0%	41	274	14.6%	34	233	17.1%	7	41
Madison	16.4%	18	110	19.4%	18	93	0.0%	0	17
Monroe	17.2%	1,028	5,962	16.2%	633	3,898	19.1%	395	2,064
Montgomery	25.5%	53	208	26.9%	49	182	15.4%	4	26
Nassau	29.3%	641	2,186	28.2%	399	1,414	31.3%	242	772
Niagara	18.4%	188	1,023	17.7%	131	739	20.1%	57	284
Oneida	23.9%	392	1,639	23.0%	283	1,230	26.7%	109	409
Onondaga	13.5%	323	2,390	13.4%	237	1,775	14.0%	86	615
Ontario	25.9%	53	205	25.6%	44	172	27.3%	9	33
Orange	28.6%	271	948	29.3%	176	600	27.3%	95	348
Orleans	20.5%	36	176	24.0%	31	129	10.6%	5	47
Oswego	13.0%	78	600	13.3%	68	512	11.4%	10	88
Otsego	17.9%	5	28	18.5%	5	27	0.0%	0	1
Putnam	23.8%	5	21	27.8%	5	18	0.0%	0	3
Rensselaer	22.9%	187	817	23.7%	142	600	20.7%	45	217
Rockland	28.0%	85	304	26.3%	62	236	33.8%	23	68
St. Lawrence	30.4%	119	391	30.6%	97	317	29.7%	22	74
Saratoga	15.6%	7	45	15.6%	7	45	N/A	0	0
Schenectady	17.6%	126	714	18.0%	90	500	16.8%	36	214
Schoharie	18.4%	7	38	16.7%	6	36	50.0%	1	2
Schuyler	13.5%	7	52	10.0%	4	40	25.0%	3	12
Seneca	25.0%	21	84	27.1%	19	70	14.3%	2	14
Steuben	29.3%	76	259	30.4%	59	194	26.2%	17	65
Suffolk	33.5%	820	2,445	32.4%	567	1,752	36.5%	253	693
Sullivan	18.0%	35	194	18.1%	23	127	17.9%	12	67
Tioga	23.1%	15	65	22.6%	14	62	33.3%	1	3
Tompkins	26.2%	54	206	23.2%	36	155	35.3%	18	51
Ulster	12.4%	83	669	12.8%	70	546	10.6%	13	123
Warren	19.1%	9	47	19.1%	9	47	N/A	0	0
Washington	22.8%	13	57	23.6%	13	55	0.0%	0	2
Wayne	17.1%	25	146	17.7%	23	130	12.5%	2	16
Westchester	29.1%	644	2,216	30.0%	382	1,274	27.8%	262	942
Wyoming	8.1%	3	37	6.3%	2	32	20.0%	1	5
Yates	21.1%	4	19	23.5%	4	17	0.0%	0	2

\* Statewide and New York City participation rates are estimated from federal disaggregated reporting samples, which are the source of the rates used by the United States Department of Health and Human Services to determine if a state has met participation goals. Because the sample size is insufficient to permit rate estimates for non-New York City districts, rates for those districts are derived directly from automated systems data. Thus, Rest of State and New York City numerators and denominators will not sum to the statewide total. Estimates are from third quarter Federal Fiscal Year 2014 samples.

Table 29  
**WORK SANCTION STATUS BY PRESENCE IN FEDERAL ALL FAMILIES WORK PARTICIPATION CALCULATION**  
**TANF, Safety Net Assistance MOE and Combined TANF and Safety Net Assistance MOE**  
**October 2014**

Local District	Combined TANF and Safety Net Assistance MOE		TANF		Safety Net Assistance MOE	
	Sanctioned in the Denominator	Sanctioned Removed From Denominator	Sanctioned in the Denominator	Sanctioned Removed From Denominator	Sanctioned in the Denominator	Sanctioned Removed From Denominator
New York State*	5,581	5,399	2,128	3,658	3,453	1,741
New York City*	3,103	3,396	998	1,996	2,105	1,400
Rest of State	3,053	1,406	1,614	956	1,439	450
Albany	80	24	38	16	42	8
Allegany	10	4	5	4	5	0
Broome	143	46	68	31	75	15
Cattaraugus	4	6	1	3	3	3
Cayuga	24	10	12	9	12	1
Chautauqua	66	31	32	21	34	10
Chemung	25	6	10	3	15	3
Chenango	6	4	3	3	3	1
Clinton	8	0	6	0	2	0
Columbia	30	12	24	8	6	4
Cortland	4	5	2	5	2	0
Delaware	2	1	2	1	0	0
Dutchess	7	3	6	2	1	1
Erie	315	174	161	126	154	48
Essex	6	1	5	1	1	0
Franklin	15	3	10	3	5	0
Fulton	3	2	3	2	0	0
Genesee	6	4	2	2	4	2
Greene	8	5	4	4	4	1
Hamilton	0	0	0	0	0	0
Herkimer	6	9	3	9	3	0
Jefferson	29	12	25	10	4	2
Lewis	0	2	0	2	0	0
Livingston	3	3	3	3	0	0
Madison	2	6	2	5	0	1
Monroe	560	316	264	194	296	122
Montgomery	14	14	12	10	2	4
Nassau	202	69	121	43	81	26
Niagara	132	39	61	32	71	7
Oneida	130	53	79	34	51	19
Onondaga	357	114	182	81	175	33
Ontario	8	4	6	3	2	1
Orange	114	48	54	29	60	19
Orleans	13	10	10	5	3	5
Oswego	40	16	25	13	15	3
Otsego	1	0	1	0	0	0
Putnam	4	0	4	0	0	0
Rensselaer	61	39	34	32	27	7
Rockland	40	13	29	12	11	1
St. Lawrence	35	25	18	20	17	5
Saratoga	0	1	0	1	0	0
Schenectady	178	53	103	42	75	11
Schoharie	0	2	0	2	0	0
Schuyler	2	2	1	2	1	0
Seneca	2	1	1	1	1	0
Steuben	11	10	8	6	3	4
Suffolk	131	94	69	56	62	38
Sullivan	41	2	22	1	19	1
Tioga	3	0	1	0	2	0
Tompkins	30	8	12	6	18	2
Ulster	35	37	21	27	14	10
Warren	3	0	3	0	0	0
Washington	1	2	1	2	0	0
Wayne	7	6	5	2	2	4
Westchester	92	53	38	25	54	28
Wyoming	4	1	2	1	2	0
Yates	0	1	0	1	0	0

\* Statewide and New York City sanction rates are estimated from federal disaggregated reporting samples, which are the source of such data used by the United States Department of Health and Human Services to determine if a state has met participation goals. Because the sample size is insufficient to permit sanction estimates for non-New York City districts, data for those districts are derived directly from automated systems. Thus, Rest of State and New York City counts may not sum to the statewide total. This table uses a federal definition of sanction and includes only persons who are deemed a work eligible individual and are sanctioned for non-compliance for work or substance abuse requirements. Estimates are from third quarter Federal Fiscal Year 2014 samples.

Table 30  
 TEMPORARY ASSISTANCE CASES WITH EARNED INCOME  
 Cases, Average Gross Earned Income and Average Net Earned Income after Application of Disregards  
 October 2014

Local District	TANF			Safety Net Assistance MOE			Safety Net Assistance Non-MOE		
	Cases	Average Gross Earned Income	Average Net Earned Income	Cases	Average Gross Earned Income	Average Net Earned Income	Cases	Average Gross Earned Income	Average Net Earned Income
New York State	16,159	\$944	\$440	10,636	\$972	\$450	9,176	\$1,216	\$731
New York City	10,449	1,003	473	7,838	995	461	6,336	1,345	852
Rest of State	5,710	835	382	2,798	907	417	2,840	928	463
Albany	146	786	354	92	884	404	74	1,209	576
Allegany	30	574	247	9	699	317	26	554	271
Broome	121	835	380	82	849	386	81	734	360
Cattaraugus	18	768	383	2	1,017	473	9	804	509
Cayuga	30	759	342	12	582	253	10	468	211
Chautauqua	136	773	348	63	713	320	63	793	371
Chemung	18	781	351	13	748	333	10	645	314
Chenango	11	881	403	5	660	291	13	451	229
Clinton	22	924	425	5	444	187	13	913	671
Columbia	29	835	380	3	631	276	10	862	461
Cortland	22	687	303	10	825	375	13	544	271
Delaware	15	660	294	1	873	399	4	120	42
Dutchess	39	888	432	11	1,120	563	15	541	331
Erie	681	831	378	437	935	431	549	1,071	512
Essex	6	1,103	517	1	737	330	0	0	0
Franklin	16	618	270	7	811	368	15	579	294
Fulton	12	767	345	0	0	0	1	329	239
Genesee	15	808	366	6	1,012	470	5	876	426
Greene	28	830	377	13	1,033	481	10	1,086	526
Hamilton	1	200	185	0	0	0	1	243	153
Herkimer	10	669	297	5	853	389	10	555	259
Jefferson	24	718	323	3	779	351	27	598	335
Lewis	1	693	308	0	0	0	1	676	299
Livingston	61	794	358	11	753	338	20	842	405
Madison	15	936	431	1	176	44	1	1,285	563
Monroe	760	793	359	544	904	416	319	837	420
Montgomery	45	867	396	12	858	392	11	1,294	610
Nassau	475	885	413	209	915	423	151	784	450
Niagara	153	769	346	75	858	392	63	800	384
Oneida	257	760	338	121	840	373	220	1,102	523
Onondaga	384	805	365	168	886	407	258	1,143	554
Ontario	44	804	364	14	913	419	19	684	339
Orange	204	951	438	128	929	428	81	983	477
Orleans	21	739	339	7	1,180	556	22	746	359
Oswego	79	782	353	13	855	390	30	826	389
Otsego	4	1,308	652	0	0	0	4	489	222
Putnam	5	802	363	0	0	0	4	706	616
Rensselaer	125	761	342	66	781	352	61	963	444
Rockland	162	953	446	23	970	428	67	1,097	539
St. Lawrence	67	658	290	26	659	298	69	621	293
Saratoga	6	885	408	0	0	0	4	779	472
Schenectady	111	881	404	56	955	453	45	1,060	541
Schoharie	11	681	301	1	1,618	780	7	656	341
Schuyler	13	689	306	7	920	423	9	726	328
Seneca	20	763	344	6	1,064	497	10	808	510
Steuben	47	809	367	21	822	373	17	606	301
Suffolk	545	951	445	262	1,064	500	214	990	566
Sullivan	26	765	344	13	995	462	7	635	374
Tioga	10	1,018	473	1	975	451	2	796	466
Tompkins	38	750	326	17	957	439	23	606	333
Ulster	116	779	356	44	762	345	55	598	301
Warren	5	771	347	0	0	0	2	581	274
Washington	14	896	411	0	0	0	5	481	240
Wayne	16	707	315	0	0	0	4	281	205
Westchester	435	889	405	171	931	430	68	769	393
Wyoming	2	564	242	1	1,432	685	2	318	159
Yates	3	1,158	545	0	0	0	6	702	322