



**Office of Temporary
and Disability Assistance**

Temporary and Disability Assistance Statistics

July 2015



Temporary and Disability Assistance Statistics

JULY 2015

Temporary Assistance

Temporary Assistance recipients totaled 573,450 in July 2015, decreasing by 325 (-0.1%) from the previous month. Related expenditures totaled \$185,643,956 in July 2015, decreasing by approximately \$2.6 million (-1.4%) over June 2015.

Supplemental Nutrition Assistance Program

Supplemental Nutrition Assistance Program recipients totaled 3,017,604 in July 2015, decreasing by 10,769 (-0.4%) from the previous month. Related expenditures totaled \$420,025,791 in July 2015, decreasing by \$596,756 (-0.1%) over June 2015.

Supplemental Security Income

Supplemental Security Income recipients (including Mental Hygiene) totaled 714,100 in July 2015, increasing by 1,826 (+0.3%) from the previous month. Related expenditures totaled \$422,623,348 in July 2015, decreasing by approximately \$2.7 million (-0.6%) over June 2015.

Note: New York State's October 2014 administrative takeover of the State Supplement portion of the Supplemental Security Income (SSI) benefit precipitated systems changes that disrupted the pre-existing statistical reporting processes for the SSI program overall. This has resulted in overcounting program participants and possibly expenditures on the monthly reports from October 2014 to the present. The New York State Office of Information Technology Services is working on tracing and correcting the cause of this problem, but, until these adjustments are made, the SSI statistics contained in this report are included to fulfill statutory reporting requirements only and should not be used for trending or other purposes.

Date Revised March 11, 2016

Table of Contents

Ten Year Trend Graphs

Temporary Assistance Recipients	4
Supplemental Nutrition Assistance Program Recipients	4
Supplemental Security Income Recipients	4

Temporary Assistance, SSI and SNAP Summary

Table 1:	Temporary Assistance, Family Assistance-FP, Safety Net Assistance, Supplemental Security Income and Supplemental Nutrition Assistance Program Cases by Region	5
Table 2:	Temporary Assistance, Family Assistance-FP, Safety Net Assistance, Supplemental Security Income and Supplemental Nutrition Assistance Program Recipients by Region	5
Table 3:	Temporary Assistance, Family Assistance-FP, Safety Net Assistance, Supplemental Security Income and Supplemental Nutrition Assistance Program Expenditures by Region	5

Temporary Assistance by Program Area

Table 4:	Temporary Assistance Year to Year Monthly Comparison Cases, Recipients and Expenditures	6
Table 5:	Temporary Assistance Cases, Recipients, Children, Adults and Expenditures	7
Table 6:	Family Assistance-FP Cases, Recipients, Children, Adults and Expenditures	8
Table 7:	Safety Net Assistance Cases, Recipients, Children, Adults and Expenditures	9

Temporary Assistance by Funding Source and Program Area

Table 8:	Temporary Assistance by Funding Source (Federally Participating and Federally Non-Participating) Cases, Recipients and Expenditures	10
Table 9:	Temporary Assistance for Needy Families-FP by Program (Family Assistance-FP and Safety Net Assistance-FP) Cases, Recipients, Children, Adults and Expenditures	11
Table 10:	Safety Net Assistance-FNP and Family Assistance-FNP Cases, Recipients, Children, Adults and Expenditures	12
Table 11:	Safety Net Assistance-FNP by Maintenance of Effort Status Cases, Recipients, Children, Adults and Expenditures	13
Table 12:	Safety Net Assistance-FNP-Cash Total Cases, Recipients, Children, Adults and Expenditures	14
Table 13:	Safety Net Assistance-FNP-Cash by Maintenance of Effort Status Cases, Recipients, Children, Adults and Expenditures	15
Table 14:	Safety Net Assistance-FNP-Non-Cash Total Cases, Recipients, Children, Adults and Expenditures	16
Table 15:	Safety Net Assistance-FNP-Non-Cash by Maintenance of Effort Status Cases, Recipients, Children, Adults and Expenditures	17

Supplemental Nutrition Assistance Program

Table 16:	Supplemental Nutrition Assistance Program Households, Persons and Value of Supplemental Nutrition Assistance Program Benefits	18
------------------	---	----

Supplemental Security Income

Table 17:	Supplemental Security Income Recipients, Total Program Expenditures and Federal and State Shares	19
Table 18:	Supplemental Security Income Recipients by Living Arrangement and Location	20
Table 19:	Supplemental Security Income Recipients by Living Arrangement and Category of Assistance	20

Table of Contents

Child Support

Table 20:	Child Support Collections (IV-D)	21
------------------	----------------------------------	----

Aggregate Claims

Table 21:	Aggregate Claims - Total Temporary Assistance	22
Table 22:	Aggregate Claims - Federally Participating - TANF	23
Table 23:	Aggregate Claims - Federally Non-Participating Safety Net Assistance-FNP Maintenance of Effort	24
Table 24:	Aggregate Claims - Federally Non-Participating Safety Net Assistance-FNP and Family Assistance-FNP Maintenance of Effort	25

Home Energy Assistance Program

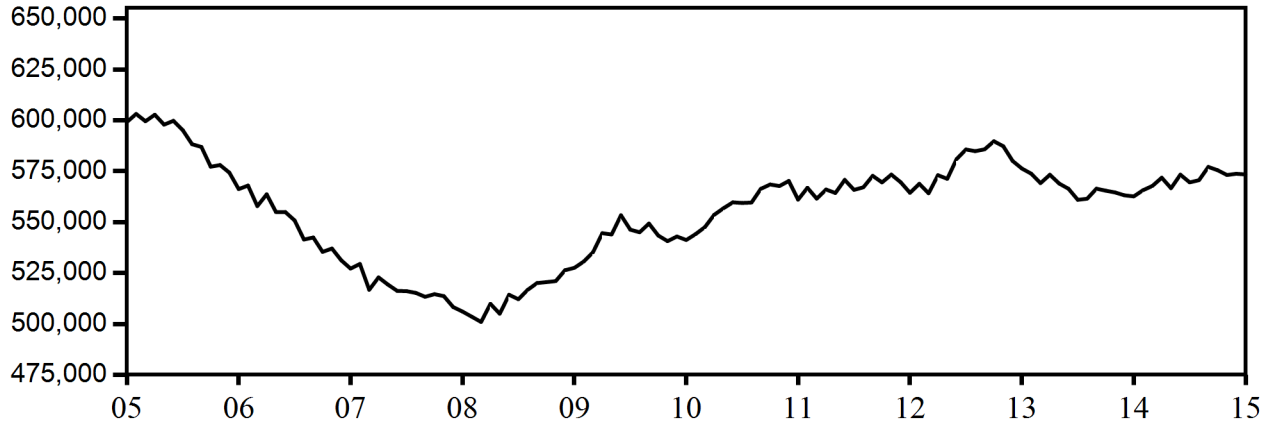
Table 25:	Home Energy Assistance Program Number and Dollar Amount of Benefits Authorized and Administrative Allocations	26
Table 26:	Home Energy Assistance Program - Non-Emergency Number, Total Dollar Amount and Average Dollar Amount of Benefits Authorized	27
Table 27:	Home Energy Assistance Program - Emergency Number, Total Dollar Amount and Average Dollar Amount of Benefits Authorized	28

Welfare to Work Statistical Tables

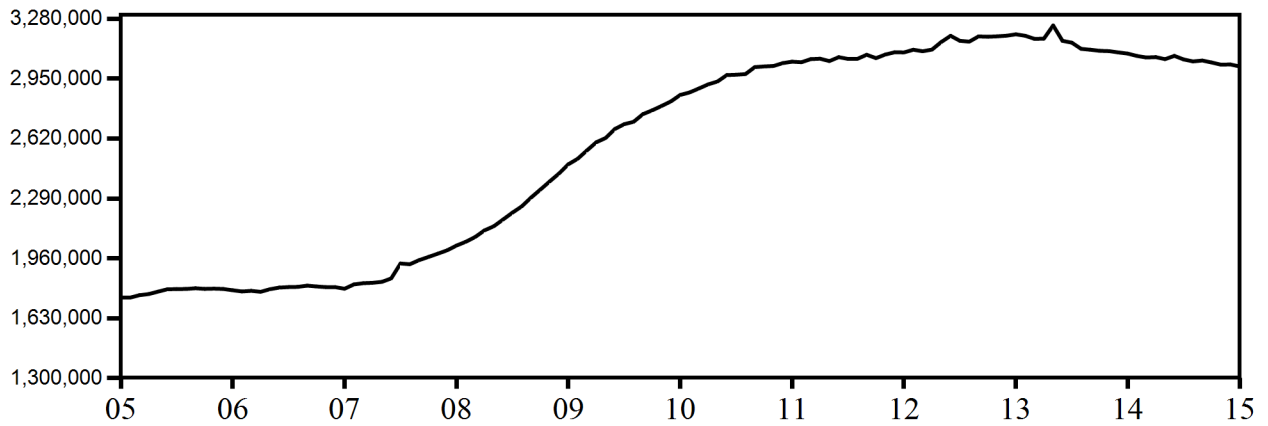
Table 28:	Federal All Families Work Participation Rates TANF, Safety Net Assistance MOE and Combined TANF and Safety Net Assistance MOE	29
Table 29:	Work Sanction Status by Presence in Federal All Families Work Participation Calculation TANF, Safety Net Assistance MOE and Combined TANF and Safety Net Assistance MOE	30
Table 30:	Temporary Assistance Cases with Earned Income Cases, Average Gross Earned Income and Average Net Earned Income after Application of Disregards	31

NEW YORK STATE
August 2005 - July 2015
TEN YEAR TREND

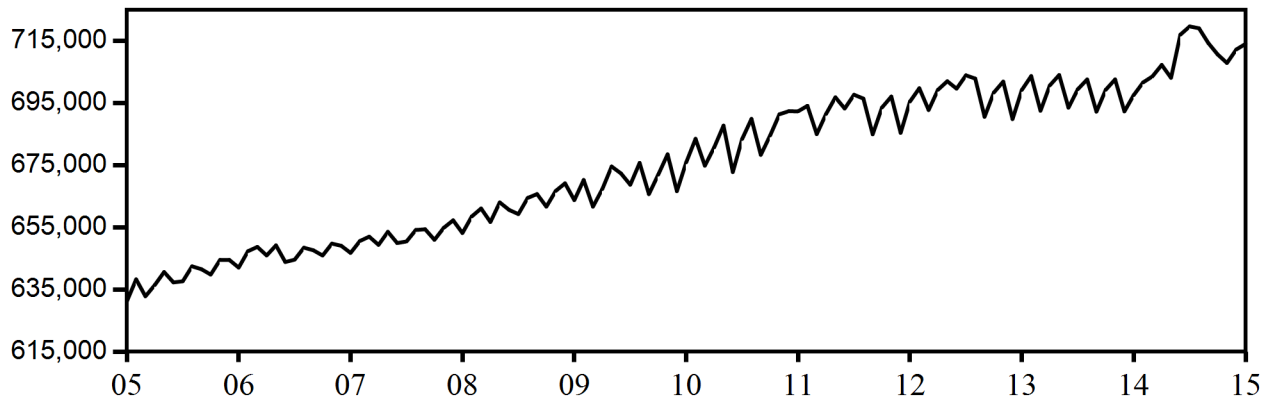
Temporary Assistance Recipients



Supplemental Nutrition Assistance Program Recipients



**Supplemental Security Income Recipients
(Including Mental Hygiene)**



SELECTED SUMMARY PROGRAM DATA
BY REGION

Table 1
TEMPORARY AND DISABILITY ASSISTANCE CASES
July 2015

Region	Cases				
	Temporary Assistance by Program			Supplemental Security Income	Supplemental Nutrition Assistance Program
	Total	Family Assistance-FP	Safety Net Assistance		
New York State	300,051	105,686	194,365	709,503	1,656,532
New York City	189,112	58,789	130,323	431,062	951,952
Rest of State	110,939	46,897	64,042	278,441	704,580

Table 2
TEMPORARY AND DISABILITY ASSISTANCE RECIPIENTS
July 2015

Region	Recipients				
	Temporary Assistance by Program			Supplemental Security Income	Supplemental Nutrition Assistance Program
	Total	Family Assistance-FP	Safety Net Assistance		
New York State	573,450	244,387	329,063	709,503	3,017,604
New York City	352,855	135,920	216,935	431,062	1,699,730
Rest of State	220,595	108,467	112,128	278,441	1,317,874

Table 3
TEMPORARY AND DISABILITY ASSISTANCE EXPENDITURES
July 2015

Region	Expenditures				
	Temporary Assistance by Program			Supplemental Security Income	Supplemental Nutrition Assistance Program
	Total	Family Assistance-FP	Safety Net Assistance		
New York State	\$185,643,956	\$67,223,819	\$118,420,137	\$420,557,882	\$420,025,791
New York City	113,879,280	35,260,759	78,618,521	257,652,294	248,887,027
Rest of State	71,764,676	31,963,060	39,801,616	162,905,588	171,138,764

Note: Supplemental Security Income data listed here do not include Mental Hygiene data. See Tables 17 - 19 for total Supplemental Security Income data.

Table 4
TEMPORARY ASSISTANCE
 Year to Year Monthly Comparison by Local District
 Cases, Recipients and Expenditures
 July 2015

Local District	July 2015			July 2014			July 2013		
	Cases	Recipients	Expenditures	Cases	Recipients	Expenditures	Cases	Recipients	Expenditures
New York State	300,051	573,450	\$185,643,956	295,144	562,676	\$183,334,852	302,288	576,355	\$186,424,822
New York City	189,112	352,855	113,879,280	179,451	331,407	110,903,090	187,654	347,892	114,222,872
Rest of State	110,939	220,595	71,764,676	115,693	231,269	72,431,762	114,634	228,463	72,201,950
Albany	2,712	5,820	1,991,082	2,906	6,185	2,023,084	3,214	6,911	2,131,585
Allegany	468	881	232,914	523	999	241,308	550	1,010	267,375
Broome	3,872	7,384	2,179,042	3,731	7,185	2,032,482	3,919	7,668	2,170,173
Cattaraugus	668	1,044	345,835	600	984	316,509	542	845	252,069
Cayuga	891	1,665	569,491	830	1,511	497,385	717	1,379	409,237
Chautauqua	2,662	5,561	1,324,169	2,717	5,866	1,515,681	2,580	5,547	1,399,743
Chemung	795	1,392	445,531	867	1,514	465,492	796	1,496	424,973
Chenango	454	772	214,999	444	795	216,460	407	717	202,150
Clinton	876	1,401	485,813	902	1,483	509,206	909	1,553	523,398
Columbia	538	993	313,555	537	1,050	276,761	580	1,083	375,873
Cortland	642	1,068	388,401	651	1,117	338,698	591	1,081	365,292
Delaware	268	466	128,146	324	563	155,432	295	476	137,851
Dutchess	1,275	2,336	1,055,393	1,406	2,533	1,060,392	1,445	2,668	1,152,882
Erie	14,848	32,461	7,398,940	14,947	32,572	7,615,356	13,944	30,193	7,034,998
Essex	127	201	84,350	141	226	74,133	119	202	45,978
Franklin	559	993	300,852	550	1,019	276,206	518	944	251,852
Fulton	292	465	146,379	364	560	189,917	341	595	177,189
Genesee	298	547	163,166	348	628	178,241	336	631	208,244
Greene	394	695	231,593	492	912	297,506	580	1,126	325,953
Hamilton	16	24	5,330	16	26	5,992	13	18	7,722
Herkimer	525	900	277,902	517	951	264,530	497	931	261,241
Jefferson	1,183	1,992	630,825	1,122	1,891	600,687	955	1,544	510,732
Lewis	126	207	61,683	125	212	59,047	115	174	59,646
Livingston	802	1,471	424,976	885	1,667	491,454	816	1,575	454,828
Madison	416	730	211,675	392	708	211,797	367	689	195,242
Monroe	15,179	31,300	9,327,294	16,536	33,885	9,515,043	16,675	33,683	8,968,914
Montgomery	515	1,189	270,721	566	1,383	309,796	583	1,353	329,723
Nassau	7,387	13,429	5,408,353	7,533	13,706	5,013,995	7,411	13,617	5,271,267
Niagara	3,203	6,111	1,411,319	3,361	6,445	1,565,631	3,253	6,186	1,618,769
Oneida	4,537	10,629	2,401,446	4,471	10,544	2,281,263	4,298	10,068	2,184,230
Onondaga	7,389	16,004	4,006,738	7,718	16,526	4,089,715	7,671	16,245	3,803,412
Ontario	873	1,448	537,892	913	1,601	550,140	844	1,458	476,554
Orange	2,738	5,670	2,189,847	3,035	6,385	2,518,870	3,372	7,043	3,018,453
Orleans	660	1,183	348,683	741	1,376	395,927	654	1,178	345,592
Oswego	1,725	3,539	885,594	1,762	3,713	927,022	1,682	3,508	894,710
Otsego	205	306	143,403	196	297	115,513	232	365	151,826
Putnam	109	152	67,277	147	210	111,203	132	188	113,275
Rensselaer	1,680	4,048	1,063,530	1,849	4,532	1,190,901	1,797	4,429	1,144,648
Rockland	1,327	2,638	851,539	1,592	3,076	973,985	1,686	3,340	1,057,058
St. Lawrence	1,343	2,569	632,739	1,348	2,665	641,704	1,251	2,462	628,938
Saratoga	400	590	222,649	423	611	262,567	403	574	252,560
Schenectady	1,846	4,101	1,210,831	2,079	4,542	1,269,971	1,922	4,177	1,323,595
Schoharie	194	322	113,102	208	358	116,590	206	361	126,690
Schuyler	236	434	127,840	229	449	115,803	228	408	138,881
Seneca	281	534	159,266	281	520	173,705	248	448	135,848
Steuben	992	1,827	506,991	988	1,906	506,857	993	1,913	507,933
Suffolk	10,283	18,526	10,189,891	10,556	19,372	10,385,796	10,753	19,836	10,185,563
Sullivan	734	1,439	517,904	819	1,663	518,839	1,040	2,104	697,317
Tioga	379	598	253,784	380	642	208,413	380	646	201,653
Tompkins	781	1,315	431,400	924	1,586	461,950	898	1,571	485,721
Ulster	2,086	3,814	1,424,794	2,268	4,153	1,434,425	2,162	3,994	1,303,594
Warren	269	424	175,639	261	416	196,318	253	392	204,623
Washington	348	583	227,015	313	568	177,530	375	642	254,460
Wayne	646	1,068	315,488	671	1,148	353,459	653	1,065	334,128
Westchester	6,538	12,773	6,547,026	6,852	13,282	5,954,624	7,083	13,595	6,516,207
Wyoming	195	322	96,903	187	320	99,708	207	353	102,176
Yates	154	241	85,736	149	232	80,743	143	205	77,406

Table 5
TEMPORARY ASSISTANCE
Cases, Recipients, Children, Adults and Expenditures by Local District
July 2015

Local District	Temporary Assistance				
	Cases	Recipients	Children	Adults	Expenditures
New York State	300,051	573,450	296,037	277,413	\$185,643,956
New York City	189,112	352,855	171,411	181,444	113,879,280
Rest of State	110,939	220,595	124,626	95,969	71,764,676
Albany	2,712	5,820	3,505	2,315	1,991,082
Allegany	468	881	491	390	232,914
Broome	3,872	7,384	4,152	3,232	2,179,042
Cattaraugus	668	1,044	558	486	345,835
Cayuga	891	1,665	897	768	569,491
Chautauqua	2,662	5,561	3,163	2,398	1,324,169
Chemung	795	1,392	889	503	445,531
Chenango	454	772	436	336	214,999
Clinton	876	1,401	804	597	485,813
Columbia	538	993	527	466	313,555
Cortland	642	1,068	513	555	388,401
Delaware	268	466	287	179	128,146
Dutchess	1,275	2,336	1,515	821	1,055,393
Erie	14,848	32,461	18,850	13,611	7,398,940
Essex	127	201	121	80	84,350
Franklin	559	993	490	503	300,852
Fulton	292	465	281	184	146,379
Genesee	298	547	326	221	163,166
Greene	394	695	369	326	231,593
Hamilton	16	24	12	12	5,330
Herkimer	525	900	501	399	277,902
Jefferson	1,183	1,992	977	1,015	630,825
Lewis	126	207	124	83	61,683
Livingston	802	1,471	732	739	424,976
Madison	416	730	418	312	211,675
Monroe	15,179	31,300	17,694	13,606	9,327,294
Montgomery	515	1,189	776	413	270,721
Nassau	7,387	13,429	7,016	6,413	5,408,353
Niagara	3,203	6,111	3,306	2,805	1,411,319
Oneida	4,537	10,629	6,163	4,466	2,401,446
Onondaga	7,389	16,004	9,344	6,660	4,006,738
Ontario	873	1,448	761	687	537,892
Orange	2,738	5,670	3,344	2,326	2,189,847
Orleans	660	1,183	659	524	348,683
Oswego	1,725	3,539	1,966	1,573	885,594
Otsego	205	306	156	150	143,403
Putnam	109	152	90	62	67,277
Rensselaer	1,680	4,048	2,579	1,469	1,063,530
Rockland	1,327	2,638	1,621	1,017	851,539
St. Lawrence	1,343	2,569	1,325	1,244	632,739
Saratoga	400	590	379	211	222,649
Schenectady	1,846	4,101	2,617	1,484	1,210,831
Schoharie	194	322	178	144	113,102
Schuyler	236	434	224	210	127,840
Seneca	281	534	309	225	159,266
Steuben	992	1,827	995	832	506,991
Suffolk	10,283	18,526	9,312	9,214	10,189,891
Sullivan	734	1,439	908	531	517,904
Tioga	379	598	398	200	253,784
Tompkins	781	1,315	646	669	431,400
Ulster	2,086	3,814	1,943	1,871	1,424,794
Warren	269	424	236	188	175,639
Washington	348	583	363	220	227,015
Wayne	646	1,068	603	465	315,488
Westchester	6,538	12,773	7,435	5,338	6,547,026
Wyoming	195	322	190	132	96,903
Yates	154	241	152	89	85,736

Table 6
FAMILY ASSISTANCE-FP
Cases, Recipients, Children, Adults and Expenditures by Local District
July 2015

Local District	Family Assistance-FP				
	Cases	Recipients	Children	Adults	Expenditures
New York State	105,686	244,387	180,703	63,684	\$67,223,819
New York City	58,789	135,920	99,822	36,098	35,260,759
Rest of State	46,897	108,467	80,881	27,586	31,963,060
Albany	1,276	2,937	2,180	757	996,166
Allegany	210	482	364	118	107,450
Broome	1,631	3,580	2,703	877	991,557
Cattaraugus	292	578	462	116	148,564
Cayuga	402	935	672	263	278,779
Chautauqua	1,146	2,706	1,973	733	597,685
Chemung	407	829	695	134	228,004
Chenango	224	458	360	98	114,494
Clinton	426	802	657	145	226,256
Columbia	230	535	395	140	138,138
Cortland	246	544	401	143	165,657
Delaware	155	329	264	65	79,351
Dutchess	644	1,341	1,116	225	552,645
Erie	6,316	15,399	11,269	4,130	3,431,141
Essex	69	121	101	20	44,567
Franklin	215	465	329	136	109,840
Fulton	160	323	263	60	85,043
Genesee	148	333	260	73	76,070
Greene	160	349	262	87	94,216
Hamilton	7	15	12	3	3,199
Herkimer	258	540	418	122	130,378
Jefferson	456	995	748	247	236,238
Lewis	66	133	109	24	34,242
Livingston	344	796	542	254	208,813
Madison	189	392	303	89	96,469
Monroe	6,032	14,397	10,444	3,953	4,122,496
Montgomery	328	834	627	207	166,452
Nassau	2,745	6,113	4,600	1,513	2,212,414
Niagara	1,285	2,862	2,099	763	617,598
Oneida	1,906	4,925	3,519	1,406	1,070,098
Onondaga	3,272	7,901	5,755	2,146	1,893,639
Ontario	374	770	593	177	217,731
Orange	1,159	2,722	2,071	651	1,043,478
Orleans	271	550	421	129	147,804
Oswego	793	1,928	1,389	539	433,157
Otsego	88	163	133	30	60,846
Putnam	52	91	82	9	28,334
Rensselaer	957	2,248	1,606	642	565,323
Rockland	600	1,351	1,121	230	414,203
St. Lawrence	520	1,211	895	316	257,680
Saratoga	215	385	342	43	113,803
Schenectady	956	2,234	1,700	534	636,872
Schoharie	96	210	165	45	53,137
Schuyler	97	239	172	67	56,804
Seneca	121	270	204	66	61,909
Steuben	411	945	710	235	223,573
Suffolk	3,612	8,468	6,275	2,193	3,994,460
Sullivan	375	823	662	161	256,624
Tioga	243	440	367	73	156,161
Tompkins	290	605	442	163	160,579
Ulster	834	1,861	1,329	532	596,359
Warren	132	257	207	50	77,374
Washington	181	357	305	52	92,744
Wayne	309	643	508	135	165,122
Westchester	2,772	6,382	4,980	1,402	2,791,159
Wyoming	109	204	162	42	56,105
Yates	85	161	138	23	44,060

Table 7
SAFETY NET ASSISTANCE*
Cases, Recipients, Children, Adults and Expenditures by Local District
July 2015

Local District	Safety Net Assistance					Expenditures
	Cases	Recipients	Children	Adults		
New York State	194,365	329,063	115,334	213,729		\$118,420,137
New York City	130,323	216,935	71,589	145,346		78,618,521
Rest of State	64,042	112,128	43,745	68,383		39,801,616
Albany	1,436	2,883	1,325	1,558		994,916
Allegany	258	399	127	272		125,464
Broome	2,241	3,804	1,449	2,355		1,187,485
Cattaraugus	376	466	96	370		197,271
Cayuga	489	730	225	505		290,712
Chautauqua	1,516	2,855	1,190	1,665		726,484
Chemung	388	563	194	369		217,527
Chenango	230	314	76	238		100,505
Clinton	450	599	147	452		259,557
Columbia	308	458	132	326		175,417
Cortland	396	524	112	412		222,744
Delaware	113	137	23	114		48,795
Dutchess	631	995	399	596		502,748
Erie	8,532	17,062	7,581	9,481		3,967,799
Essex	58	80	20	60		39,783
Franklin	344	528	161	367		191,012
Fulton	132	142	18	124		61,336
Genesee	150	214	66	148		87,096
Greene	234	346	107	239		137,377
Hamilton	9	9	0	9		2,131
Herkimer	267	360	83	277		147,524
Jefferson	727	997	229	768		394,587
Lewis	60	74	15	59		27,441
Livingston	458	675	190	485		216,163
Madison	227	338	115	223		115,206
Monroe	9,147	16,903	7,250	9,653		5,204,798
Montgomery	187	355	149	206		104,269
Nassau	4,642	7,316	2,416	4,900		3,195,939
Niagara	1,918	3,249	1,207	2,042		793,721
Oneida	2,631	5,704	2,644	3,060		1,331,348
Onondaga	4,117	8,103	3,589	4,514		2,113,099
Ontario	499	678	168	510		320,161
Orange	1,579	2,948	1,273	1,675		1,146,369
Orleans	389	633	238	395		200,879
Oswego	932	1,611	577	1,034		452,437
Otsego	117	143	23	120		82,557
Putnam	57	61	8	53		38,943
Rensselaer	723	1,800	973	827		498,207
Rockland	727	1,287	500	787		437,336
St. Lawrence	823	1,358	430	928		375,059
Saratoga	185	205	37	168		108,846
Schenectady	890	1,867	917	950		573,959
Schoharie	98	112	13	99		59,965
Schuyler	139	195	52	143		71,036
Seneca	160	264	105	159		97,357
Steuben	581	882	285	597		283,418
Suffolk	6,671	10,058	3,037	7,021		6,195,431
Sullivan	359	616	246	370		261,280
Tioga	136	158	31	127		97,623
Tompkins	491	710	204	506		270,821
Ulster	1,252	1,953	614	1,339		828,435
Warren	137	167	29	138		98,265
Washington	167	226	58	168		134,271
Wayne	337	425	95	330		150,366
Westchester	3,766	6,391	2,455	3,936		3,755,867
Wyoming	86	118	28	90		40,798
Yates	69	80	14	66		41,676

* Includes Federally Non-Participating Family Assistance cases (non-disabled two-parent Family Assistance cases).

Table 8
TEMPORARY ASSISTANCE BY FUNDING SOURCE
 Cases, Recipients, and Expenditures by Local District
 July 2015

Local District	Total			Federally Participating-TANF Family Assistance-FP and Safety Net Assistance-FP			Federally Non-Participating Safety Net Assistance-FNP and Family Assistance-FNP		
	Cases	Recipients	Expenditures	Cases	Recipients	Expenditures	Cases	Recipients	Expenditures
New York State	300,051	573,450	\$185,643,956	106,946	247,654	\$68,047,294	193,105	325,796	\$117,596,662
New York City	189,112	352,855	113,879,280	58,963	136,308	35,347,209	130,149	216,547	78,532,071
Rest of State	110,939	220,595	71,764,676	47,983	111,346	32,700,085	62,956	109,249	39,064,591
Albany	2,712	5,820	1,991,082	1,287	2,969	1,004,379	1,425	2,851	986,703
Allegany	468	881	232,914	211	486	109,513	257	395	123,401
Broome	3,872	7,384	2,179,042	1,677	3,707	1,017,273	2,195	3,677	1,161,769
Cattaraugus	668	1,044	345,835	305	610	154,843	363	434	190,992
Cayuga	891	1,665	569,491	417	980	288,186	474	685	281,305
Chautauqua	2,662	5,561	1,324,169	1,167	2,749	609,416	1,495	2,812	714,753
Chemung	795	1,392	445,531	413	849	231,271	382	543	214,260
Chenango	454	772	214,999	229	471	115,604	225	301	99,395
Clinton	876	1,401	485,813	433	818	231,211	443	583	254,602
Columbia	538	993	313,555	236	555	142,348	302	438	171,207
Cortland	642	1,068	388,401	261	578	173,845	381	490	214,556
Delaware	268	466	128,146	155	329	79,351	113	137	48,795
Dutchess	1,275	2,336	1,055,393	649	1,353	558,606	626	983	496,787
Erie	14,848	32,461	7,398,940	6,411	15,640	3,479,179	8,437	16,821	3,919,761
Essex	127	201	84,350	70	123	45,029	57	78	39,321
Franklin	559	993	300,852	217	469	116,932	342	524	183,920
Fulton	292	465	146,379	161	325	85,418	131	140	60,961
Genesee	298	547	163,166	154	350	80,470	144	197	82,696
Greene	394	695	231,593	163	356	96,490	231	339	135,103
Hamilton	16	24	5,330	7	15	3,199	9	9	2,131
Herkimer	525	900	277,902	260	545	131,478	265	355	146,424
Jefferson	1,183	1,992	630,825	474	1,044	245,324	709	948	385,501
Lewis	126	207	61,683	67	135	34,361	59	72	27,322
Livingston	802	1,471	424,976	352	816	213,142	450	655	211,834
Madison	416	730	211,675	203	430	106,779	213	300	104,896
Monroe	15,179	31,300	9,327,294	6,388	15,351	4,335,712	8,791	15,949	4,991,582
Montgomery	515	1,189	270,721	333	845	170,180	182	344	100,541
Nassau	7,387	13,429	5,408,353	2,760	6,143	2,230,915	4,627	7,286	3,177,438
Niagara	3,203	6,111	1,411,319	1,365	3,069	658,752	1,838	3,042	752,567
Oneida	4,537	10,629	2,401,446	1,947	5,035	1,091,249	2,590	5,594	1,310,197
Onondaga	7,389	16,004	4,006,738	3,291	7,947	1,909,417	4,098	8,057	2,097,321
Ontario	873	1,448	537,892	380	783	223,644	493	665	314,248
Orange	2,738	5,670	2,189,847	1,178	2,769	1,073,323	1,560	2,901	1,116,524
Orleans	660	1,183	348,683	282	586	156,093	378	597	192,590
Oswego	1,725	3,539	885,594	825	2,030	452,884	900	1,509	432,710
Otsego	205	306	143,403	92	177	65,810	113	129	77,593
Putnam	109	152	67,277	52	91	28,334	57	61	38,943
Rensselaer	1,680	4,048	1,063,530	964	2,270	569,653	716	1,778	493,877
Rockland	1,327	2,638	851,539	607	1,369	417,381	720	1,269	434,158
St. Lawrence	1,343	2,569	632,739	527	1,234	266,411	816	1,335	366,328
Saratoga	400	590	222,649	217	389	115,914	183	201	106,735
Schenectady	1,846	4,101	1,210,831	963	2,260	640,182	883	1,841	570,649
Schoharie	194	322	113,102	96	210	53,137	98	112	59,965
Schuyler	236	434	127,840	97	239	56,804	139	195	71,036
Seneca	281	534	159,266	123	278	63,302	158	256	95,964
Steuben	992	1,827	506,991	413	956	224,969	579	871	282,022
Suffolk	10,283	18,526	10,189,891	3,685	8,666	4,083,144	6,598	9,860	6,106,747
Sullivan	734	1,439	517,904	379	832	262,880	355	607	255,024
Tioga	379	598	253,784	246	446	160,644	133	152	93,140
Tompkins	781	1,315	431,400	303	635	167,129	478	680	264,271
Ulster	2,086	3,814	1,424,794	845	1,887	606,072	1,241	1,927	818,722
Warren	269	424	175,639	137	271	80,304	132	153	95,335
Washington	348	583	227,015	189	376	96,363	159	207	130,652
Wayne	646	1,068	315,488	329	698	176,739	317	370	138,749
Westchester	6,538	12,773	6,547,026	2,794	6,431	2,807,676	3,744	6,342	3,739,350
Wyoming	195	322	96,903	111	208	57,215	84	114	39,688
Yates	154	241	85,736	86	163	44,206	68	78	41,530

Table 9
 TEMPORARY ASSISTANCE FOR NEEDY FAMILIES-FP BY PROGRAM
 Cases, Recipients, Children, Adults and Expenditures by Local District
 July 2015

Local District	Family Assistance-FP					Safety Net Assistance-FP				
	Cases	Recipients	Children	Adults	Expenditures	Cases	Recipients	Children	Adults	Expenditures
New York State	105,686	244,387	180,703	63,684	\$67,223,819	1,260	3,267	1,907	1,360	\$823,475
New York City	58,789	135,920	99,822	36,098	35,260,759	174	388	273	115	86,450
Rest of State	46,897	108,467	80,881	27,586	31,963,060	1,086	2,879	1,634	1,245	737,025
Albany	1,276	2,937	2,180	757	996,166	11	32	19	13	8,213
Allegany	210	482	364	118	107,450	1	4	2	2	2,063
Broome	1,631	3,580	2,703	877	991,557	46	127	69	58	25,716
Cattaraugus	292	578	462	116	148,564	13	32	17	15	6,279
Cayuga	402	935	672	263	278,779	15	45	29	16	9,407
Chautauqua	1,146	2,706	1,973	733	597,685	21	43	18	25	11,731
Chemung	407	829	695	134	228,004	6	20	12	8	3,267
Chenango	224	458	360	98	114,494	5	13	7	6	1,110
Clinton	426	802	657	145	226,256	7	16	9	7	4,955
Columbia	230	535	395	140	138,138	6	20	12	8	4,210
Cortland	246	544	401	143	165,657	15	34	17	17	8,188
Delaware	155	329	264	65	79,351	0	0	0	0	0
Dutchess	644	1,341	1,116	225	552,645	5	12	7	5	5,961
Erie	6,316	15,399	11,269	4,130	3,431,141	95	241	133	108	48,038
Essex	69	121	101	20	44,567	1	2	1	1	462
Franklin	215	465	329	136	109,840	2	4	2	2	7,092
Fulton	160	323	263	60	85,043	1	2	1	1	375
Genesee	148	333	260	73	76,070	6	17	11	6	4,400
Greene	160	349	262	87	94,216	3	7	4	3	2,274
Hamilton	7	15	12	3	3,199	0	0	0	0	0
Herkimer	258	540	418	122	130,378	2	5	2	3	1,100
Jefferson	456	995	748	247	236,238	18	49	27	22	9,086
Lewis	66	133	109	24	34,242	1	2	1	1	119
Livingston	344	796	542	254	208,813	8	20	12	8	4,329
Madison	189	392	303	89	96,469	14	38	22	16	10,310
Monroe	6,032	14,397	10,444	3,953	4,122,496	356	954	555	399	213,216
Montgomery	328	834	627	207	166,452	5	11	4	7	3,728
Nassau	2,745	6,113	4,600	1,513	2,212,414	15	30	15	15	18,501
Niagara	1,285	2,862	2,099	763	617,598	80	207	111	96	41,154
Oneida	1,906	4,925	3,519	1,406	1,070,098	41	110	61	49	21,151
Onondaga	3,272	7,901	5,755	2,146	1,893,639	19	46	27	19	15,778
Ontario	374	770	593	177	217,731	6	13	7	6	5,913
Orange	1,159	2,722	2,071	651	1,043,478	19	47	26	21	29,845
Orleans	271	550	421	129	147,804	11	36	24	12	8,289
Oswego	793	1,928	1,389	539	433,157	32	102	63	39	19,727
Otsego	88	163	133	30	60,846	4	14	9	5	4,964
Putnam	52	91	82	9	28,334	0	0	0	0	0
Rensselaer	957	2,248	1,606	642	565,323	7	22	15	7	4,330
Rockland	600	1,351	1,121	230	414,203	7	18	9	9	3,178
St. Lawrence	520	1,211	895	316	257,680	7	23	14	9	8,731
Saratoga	215	385	342	43	113,803	2	4	2	2	2,111
Schenectady	956	2,234	1,700	534	636,872	7	26	18	8	3,310
Schoharie	96	210	165	45	53,137	0	0	0	0	0
Schuyler	97	239	172	67	56,804	0	0	0	0	0
Seneca	121	270	204	66	61,909	2	8	6	2	1,393
Steuben	411	945	710	235	223,573	2	11	7	4	1,396
Suffolk	3,612	8,468	6,275	2,193	3,994,460	73	198	111	87	88,684
Sullivan	375	823	662	161	256,624	4	9	5	4	6,256
Tioga	243	440	367	73	156,161	3	6	3	3	4,483
Tompkins	290	605	442	163	160,579	13	30	13	17	6,550
Ulster	834	1,861	1,329	532	596,359	11	26	13	13	9,713
Warren	132	257	207	50	77,374	5	14	8	6	2,930
Washington	181	357	305	52	92,744	8	19	11	8	3,619
Wayne	309	643	508	135	165,122	20	55	34	21	11,617
Westchester	2,772	6,382	4,980	1,402	2,791,159	22	49	26	23	16,517
Wyoming	109	204	162	42	56,105	2	4	2	2	1,110
Yates	85	161	138	23	44,060	1	2	1	1	146

Table 10
 SAFETY NET ASSISTANCE-FNP AND FAMILY ASSISTANCE-FNP
 Cases, Recipients, Children, Adults and Expenditures by Local District
 July 2015

Local District	Safety Net Assistance-FNP and Family Assistance-FNP				
	Cases	Recipients	Children	Adults	Expenditures
New York State	193,105	325,796	113,427	212,369	\$117,596,662
New York City	130,149	216,547	71,316	145,231	78,532,071
Rest of State	62,956	109,249	42,111	67,138	39,064,591
Albany	1,425	2,851	1,306	1,545	986,703
Allegany	257	395	125	270	123,401
Broome	2,195	3,677	1,380	2,297	1,161,769
Cattaraugus	363	434	79	355	190,992
Cayuga	474	685	196	489	281,305
Chautauqua	1,495	2,812	1,172	1,640	714,753
Chemung	382	543	182	361	214,260
Chenango	225	301	69	232	99,395
Clinton	443	583	138	445	254,602
Columbia	302	438	120	318	171,207
Cortland	381	490	95	395	214,556
Delaware	113	137	23	114	48,795
Dutchess	626	983	392	591	496,787
Erie	8,437	16,821	7,448	9,373	3,919,761
Essex	57	78	19	59	39,321
Franklin	342	524	159	365	183,920
Fulton	131	140	17	123	60,961
Genesee	144	197	55	142	82,696
Greene	231	339	103	236	135,103
Hamilton	9	9	0	9	2,131
Herkimer	265	355	81	274	146,424
Jefferson	709	948	202	746	385,501
Lewis	59	72	14	58	27,322
Livingston	450	655	178	477	211,834
Madison	213	300	93	207	104,896
Monroe	8,791	15,949	6,695	9,254	4,991,582
Montgomery	182	344	145	199	100,541
Nassau	4,627	7,286	2,401	4,885	3,177,438
Niagara	1,838	3,042	1,096	1,946	752,567
Oneida	2,590	5,594	2,583	3,011	1,310,197
Onondaga	4,098	8,057	3,562	4,495	2,097,321
Ontario	493	665	161	504	314,248
Orange	1,560	2,901	1,247	1,654	1,116,524
Orleans	378	597	214	383	192,590
Oswego	900	1,509	514	995	432,710
Otsego	113	129	14	115	77,593
Putnam	57	61	8	53	38,943
Rensselaer	716	1,778	958	820	493,877
Rockland	720	1,269	491	778	434,158
St. Lawrence	816	1,335	416	919	366,328
Saratoga	183	201	35	166	106,735
Schenectady	883	1,841	899	942	570,649
Schoharie	98	112	13	99	59,965
Schuyler	139	195	52	143	71,036
Seneca	158	256	99	157	95,964
Steuben	579	871	278	593	282,022
Suffolk	6,598	9,860	2,926	6,934	6,106,747
Sullivan	355	607	241	366	255,024
Tioga	133	152	28	124	93,140
Tompkins	478	680	191	489	264,271
Ulster	1,241	1,927	601	1,326	818,722
Warren	132	153	21	132	95,335
Washington	159	207	47	160	130,652
Wayne	317	370	61	309	138,749
Westchester	3,744	6,342	2,429	3,913	3,739,350
Wyoming	84	114	26	88	39,688
Yates	68	78	13	65	41,530

Table 11
SAFETY NET ASSISTANCE-FNP BY MAINTENANCE OF EFFORT STATUS
Maintenance of Effort (MOE) vs. Non-Maintenance of Effort (Non-MOE)
Cases, Recipients, Children, Adults and Expenditures by Local District
July 2015

Local District	Maintenance of Effort (MOE)					Non-Maintenance of Effort (Non-MOE)*				
	Cases	Recipients	Children	Adults	Expenditures	Cases	Recipients	Children	Adults	Expenditures
New York State	37,058	122,406	82,027	40,379	\$25,823,489	156,047	203,390	31,400	171,990	\$91,773,173
New York City	25,681	82,218	53,681	28,537	16,552,431	104,468	134,329	17,635	116,694	61,979,640
Rest of State	11,377	40,188	28,346	11,842	9,271,058	51,579	69,061	13,765	55,296	29,793,533
Albany	324	1,197	864	333	326,446	1,101	1,654	442	1,212	660,257
Allegany	35	112	76	36	21,274	222	283	49	234	102,127
Broome	359	1,268	882	386	247,570	1,836	2,409	498	1,911	914,199
Cattaraugus	22	69	47	22	12,800	341	365	32	333	178,192
Cayuga	46	162	116	46	28,889	428	523	80	443	252,416
Chautauqua	358	1,226	833	393	219,821	1,137	1,586	339	1,247	494,932
Chemung	32	120	88	32	21,062	350	423	94	329	193,198
Chenango	11	39	27	12	6,026	214	262	42	220	93,369
Clinton	43	141	97	44	23,780	400	442	41	401	230,822
Columbia	28	99	70	29	18,814	274	339	50	289	152,393
Cortland	23	74	50	24	14,113	358	416	45	371	200,443
Delaware	2	10	9	1	1,775	111	127	14	113	47,020
Dutchess	103	374	268	106	76,411	523	609	124	485	420,376
Erie	1,707	6,180	4,427	1,753	1,013,448	6,730	10,641	3,021	7,620	2,906,313
Essex	3	13	10	3	699	54	65	9	56	38,622
Franklin	39	112	73	39	22,451	303	412	86	326	161,469
Fulton	3	11	8	3	759	128	129	9	120	60,202
Genesee	15	53	37	16	7,832	129	144	18	126	74,864
Greene	33	109	77	32	16,510	198	230	26	204	118,593
Hamilton	0	0	0	0	0	9	9	0	9	2,131
Herkimer	24	89	63	26	17,091	241	266	18	248	129,333
Jefferson	45	148	103	45	25,234	664	800	99	701	360,267
Lewis	2	6	3	3	520	57	66	11	55	26,802
Livingston	49	152	98	54	29,848	401	503	80	423	181,986
Madison	24	88	62	26	13,382	189	212	31	181	91,514
Monroe	2,232	7,788	5,468	2,320	1,774,909	6,559	8,161	1,227	6,934	3,216,673
Montgomery	42	147	104	43	22,763	140	197	41	156	77,778
Nassau	812	2,625	1,792	833	908,745	3,815	4,661	609	4,052	2,268,693
Niagara	311	1,089	760	329	154,591	1,527	1,953	336	1,617	597,976
Oneida	469	1,887	1,384	503	307,528	2,121	3,707	1,199	2,508	1,002,669
Onondaga	712	2,724	2,001	723	459,154	3,386	5,333	1,561	3,772	1,638,167
Ontario	42	150	106	44	24,883	451	515	55	460	289,365
Orange	392	1,381	974	407	332,154	1,168	1,520	273	1,247	784,370
Orleans	53	181	126	55	35,741	325	416	88	328	156,849
Oswego	105	374	259	115	71,047	795	1,135	255	880	361,663
Otsego	0	0	0	0	0	113	129	14	115	77,593
Putnam	2	5	3	2	1,121	55	56	5	51	37,822
Rensselaer	243	880	627	253	152,805	473	898	331	567	341,072
Rockland	80	286	204	82	51,927	640	983	287	696	382,231
St. Lawrence	83	262	180	82	41,259	733	1,073	236	837	325,069
Saratoga	1	2	1	1	810	182	199	34	165	105,925
Schenectady	227	905	670	235	152,294	656	936	229	707	418,355
Schoharie	3	8	5	3	1,719	95	104	8	96	58,246
Schuyler	12	35	21	14	5,997	127	160	31	129	65,039
Seneca	22	79	56	23	12,976	136	177	43	134	82,988
Steuben	82	276	187	89	45,028	497	595	91	504	236,994
Suffolk	825	3,055	2,173	882	1,226,826	5,773	6,805	753	6,052	4,879,921
Sullivan	56	194	139	55	36,720	299	413	102	311	218,304
Tioga	9	26	20	6	7,383	124	126	8	118	85,757
Tompkins	57	196	135	61	29,539	421	484	56	428	234,732
Ulster	167	541	375	166	126,313	1,074	1,386	226	1,160	692,409
Warren	3	7	5	2	2,001	129	146	16	130	93,334
Washington	3	11	8	3	1,839	156	196	39	157	128,813
Wayne	19	53	35	18	11,183	298	317	26	291	127,566
Westchester	976	3,139	2,118	1,021	1,099,633	2,768	3,203	311	2,892	2,639,717
Wyoming	5	23	17	6	3,075	79	91	9	82	36,613
Yates	2	7	5	2	2,540	66	71	8	63	38,990

* The Non-MOE category includes otherwise Temporary Assistance for Needy Families eligible or otherwise Safety Net Assistance MOE eligible non-disabled two-parent cases.

Table 12
SAFETY NET ASSISTANCE-FNP-CASH TOTAL*
Cases, Recipients, Children, Adults and Expenditures by Local District
July 2015

Local District	Safety Net Assistance-FNP Cash Total				
	Cases	Recipients	Children	Adults	Expenditures
New York State	See Note	See Note	See Note	See Note	See Note
New York City	See Note	See Note	See Note	See Note	See Note
Rest of State	36,071	51,640	12,519	39,121	\$20,491,893
Albany	759	1,205	356	849	424,905
Allegany	134	184	39	145	56,467
Broome	1,226	1,636	332	1,304	568,136
Cattaraugus	250	288	38	250	129,459
Cayuga	328	413	72	341	197,704
Chautauqua	773	1,104	259	845	337,791
Chemung	302	381	101	280	165,257
Chenango	182	236	48	188	81,968
Clinton	323	389	65	324	181,389
Columbia	182	237	41	196	86,007
Cortland	228	282	44	238	116,026
Delaware	95	116	19	97	35,966
Dutchess	375	512	161	351	261,174
Erie	4,810	8,311	2,733	5,578	2,072,908
Essex	48	59	9	50	32,693
Franklin	218	293	60	233	122,320
Fulton	93	94	9	85	40,182
Genesee	74	79	8	71	31,934
Greene	137	175	32	143	77,073
Hamilton	7	7	0	7	1,759
Herkimer	164	198	25	173	91,436
Jefferson	484	611	93	518	258,947
Lewis	42	51	6	45	20,554
Livingston	341	436	75	361	151,871
Madison	145	194	55	139	68,525
Monroe	4,217	5,927	1,393	4,534	2,103,469
Montgomery	99	152	38	114	54,055
Nassau	2,566	3,168	433	2,735	1,511,663
Niagara	975	1,293	253	1,040	376,585
Oneida	1,703	3,152	1,108	2,044	802,592
Onondaga	2,990	4,955	1,630	3,325	1,457,513
Ontario	312	367	42	325	182,571
Orange	773	1,040	215	825	510,444
Orleans	216	314	96	218	110,093
Oswego	609	909	225	684	268,919
Otsego	86	101	10	91	52,935
Putnam	36	38	6	32	22,529
Rensselaer	367	677	246	431	263,168
Rockland	308	443	109	334	168,200
St. Lawrence	507	759	170	589	215,828
Saratoga	137	155	34	121	59,055
Schenectady	458	647	161	486	277,101
Schoharie	78	85	7	78	45,468
Schuyler	97	121	25	96	45,737
Seneca	99	151	53	98	59,893
Steuben	372	463	81	382	179,786
Suffolk	4,179	5,277	863	4,414	3,661,103
Sullivan	188	270	80	190	117,748
Tioga	98	100	7	93	57,265
Tompkins	268	313	47	266	156,531
Ulster	702	946	175	771	436,490
Warren	99	116	16	100	63,255
Washington	125	161	37	124	107,977
Wayne	211	230	19	211	84,420
Westchester	1,359	1,681	239	1,442	1,369,746
Wyoming	64	80	13	67	28,146
Yates	53	58	8	50	29,157

Note: A breakout of Safety Net Assistance-FNP-Cash and Safety Net Assistance-FNP-Non-Cash data is not available for New York City.

* May include otherwise Temporary Assistance for Needy Families eligible or otherwise Safety Net Assistance MOE eligible non-disabled two-parent cases.

Table 13
SAFETY NET ASSISTANCE-FNP-CASH BY MAINTENANCE OF EFFORT STATUS
Maintenance of Effort (MOE) vs. Non-Maintenance of Effort (Non-MOE)
Cases, Recipients, Children, Adults and Expenditures by Local District
July 2015

Local District	Maintenance of Effort (MOE)					Non-Maintenance of Effort (Non-MOE)*				
	Cases	Recipients	Children	Adults	Expenditures	Cases	Recipients	Children	Adults	Expenditures
New York State	See Note	See Note	See Note	See Note	See Note	See Note	See Note	See Note	See Note	See Note
New York City	See Note	See Note	See Note	See Note	See Note	See Note	See Note	See Note	See Note	See Note
Rest of State	1,287	4,266	2,862	1,404	\$1,029,463	34,784	47,374	9,657	37,717	\$19,462,430
Albany	26	81	54	27	23,311	733	1,124	302	822	401,594
Allegany	1	5	3	2	836	133	179	36	143	55,631
Broome	27	85	53	32	18,283	1,199	1,551	279	1,272	549,853
Cattaraugus	11	29	18	11	6,325	239	259	20	239	123,134
Cayuga	3	12	9	3	2,240	325	401	63	338	195,464
Chautauqua	23	66	40	26	12,387	750	1,038	219	819	325,404
Chemung	5	17	12	5	3,233	297	364	89	275	162,024
Chenango	4	15	10	5	3,047	178	221	38	183	78,921
Clinton	17	50	33	17	8,316	306	339	32	307	173,073
Columbia	2	7	5	2	2,321	180	230	36	194	83,686
Cortland	2	5	3	2	961	226	277	41	236	115,065
Delaware	1	6	5	1	1,041	94	110	14	96	34,925
Dutchess	33	120	84	36	19,178	342	392	77	315	241,996
Erie	221	733	492	241	136,225	4,589	7,578	2,241	5,337	1,936,683
Essex	0	0	0	0	0	48	59	9	50	32,693
Franklin	2	6	4	2	1,193	216	287	56	231	121,127
Fulton	0	0	0	0	0	93	94	9	85	40,182
Genesee	0	0	0	0	0	74	79	8	71	31,934
Greene	4	15	10	5	2,879	133	160	22	138	74,194
Hamilton	0	0	0	0	0	7	7	0	7	1,759
Herkimer	5	19	13	6	3,426	159	179	12	167	88,010
Jefferson	9	27	17	10	6,028	475	584	76	508	252,919
Lewis	0	0	0	0	0	42	51	6	45	20,554
Livingston	13	38	23	15	7,541	328	398	52	346	144,330
Madison	11	37	25	12	5,843	134	157	30	127	62,682
Monroe	217	710	478	232	171,182	4,000	5,217	915	4,302	1,932,287
Montgomery	3	8	5	3	1,064	96	144	33	111	52,991
Nassau	43	118	76	42	34,857	2,523	3,050	357	2,693	1,476,806
Niagara	35	116	73	43	20,928	940	1,177	180	997	355,657
Oneida	63	247	173	74	43,896	1,640	2,905	935	1,970	758,696
Onondaga	171	625	444	181	120,240	2,819	4,330	1,186	3,144	1,337,273
Ontario	1	3	2	1	528	311	364	40	324	182,043
Orange	41	125	78	47	28,813	732	915	137	778	481,631
Orleans	9	29	19	10	6,076	207	285	77	208	104,017
Oswego	10	26	15	11	6,742	599	883	210	673	262,177
Otsego	0	0	0	0	0	86	101	10	91	52,935
Putnam	1	2	1	1	291	35	36	5	31	22,238
Rensselaer	3	11	8	3	1,712	364	666	238	428	261,456
Rockland	6	18	11	7	2,227	302	425	98	327	165,973
St. Lawrence	10	26	15	11	4,906	497	733	155	578	210,922
Saratoga	1	2	1	1	810	136	153	33	120	58,245
Schenectady	5	15	11	4	3,776	453	632	150	482	273,325
Schoharie	1	2	1	1	594	77	83	6	77	44,874
Schuyler	1	3	2	1	598	96	118	23	95	45,139
Seneca	5	21	16	5	3,659	94	130	37	93	56,234
Steuben	6	20	14	6	2,744	366	443	67	376	177,042
Suffolk	154	560	381	179	250,845	4,025	4,717	482	4,235	3,410,258
Sullivan	3	10	7	3	2,642	185	260	73	187	115,106
Tioga	0	0	0	0	0	98	100	7	93	57,265
Tompkins	2	6	4	2	1,412	266	307	43	264	155,119
Ulster	9	22	13	9	5,593	693	924	162	762	430,897
Warren	0	0	0	0	0	99	116	16	100	63,255
Washington	2	8	6	2	1,086	123	153	31	122	106,891
Wayne	6	15	9	6	3,470	205	215	10	205	80,950
Westchester	58	140	82	58	43,960	1,301	1,541	157	1,384	1,325,786
Wyoming	1	5	4	1	198	63	75	9	66	27,948
Yates	0	0	0	0	0	53	58	8	50	29,157

Note: A breakout of Safety Net Assistance-FNP-Cash and Safety Net Assistance-FNP-Non-Cash data is not available for New York City.

* The Non-MOE category includes otherwise Temporary Assistance for Needy Families eligible or otherwise Safety Net Assistance MOE eligible non-disabled two-parent cases.

Table 14
SAFETY NET ASSISTANCE-FNP-NON-CASH TOTAL*
Cases, Recipients, Children, Adults and Expenditures by Local District
July 2015

Local District	Safety Net Assistance-FNP-Non-Cash Total				
	Cases	Recipients	Children	Adults	Expenditures
New York State	See Note	See Note	See Note	See Note	See Note
New York City	See Note	See Note	See Note	See Note	See Note
Rest of State	26,885	57,609	29,592	28,017	\$18,572,698
Albany	666	1,646	950	696	561,798
Allegany	123	211	86	125	66,934
Broome	969	2,041	1,048	993	593,633
Cattaraugus	113	146	41	105	61,533
Cayuga	146	272	124	148	83,601
Chautauqua	722	1,708	913	795	376,962
Chemung	80	162	81	81	49,003
Chenango	43	65	21	44	17,427
Clinton	120	194	73	121	73,213
Columbia	120	201	79	122	85,200
Cortland	153	208	51	157	98,530
Delaware	18	21	4	17	12,829
Dutchess	251	471	231	240	235,613
Erie	3,627	8,510	4,715	3,795	1,846,853
Essex	9	19	10	9	6,628
Franklin	124	231	99	132	61,600
Fulton	38	46	8	38	20,779
Genesee	70	118	47	71	50,762
Greene	94	164	71	93	58,030
Hamilton	2	2	0	2	372
Herkimer	101	157	56	101	54,988
Jefferson	225	337	109	228	126,554
Lewis	17	21	8	13	6,768
Livingston	109	219	103	116	59,963
Madison	68	106	38	68	36,371
Monroe	4,574	10,022	5,302	4,720	2,888,113
Montgomery	83	192	107	85	46,486
Nassau	2,061	4,118	1,968	2,150	1,665,775
Niagara	863	1,749	843	906	375,982
Oneida	887	2,442	1,475	967	507,605
Onondaga	1,108	3,102	1,932	1,170	639,808
Ontario	181	298	119	179	131,677
Orange	787	1,861	1,032	829	606,080
Orleans	162	283	118	165	82,497
Oswego	291	600	289	311	163,791
Otsego	27	28	4	24	24,658
Putnam	21	23	2	21	16,414
Rensselaer	349	1,101	712	389	230,709
Rockland	412	826	382	444	265,958
St. Lawrence	309	576	246	330	150,500
Saratoga	46	46	1	45	47,680
Schenectady	425	1,194	738	456	293,548
Schoharie	20	27	6	21	14,497
Schuyler	42	74	27	47	25,299
Seneca	59	105	46	59	36,071
Steuben	207	408	197	211	102,236
Suffolk	2,419	4,583	2,063	2,520	2,445,644
Sullivan	167	337	161	176	137,276
Tioga	35	52	21	31	35,875
Tompkins	210	367	144	223	107,740
Ulster	539	981	426	555	382,232
Warren	33	37	5	32	32,080
Washington	34	46	10	36	22,675
Wayne	106	140	42	98	54,329
Westchester	2,385	4,661	2,190	2,471	2,369,604
Wyoming	20	34	13	21	11,542
Yates	15	20	5	15	12,373

Note: A breakout of Safety Net Assistance-FNP-Cash and Safety Net Assistance-FNP-Non-Cash data is not available for New York City.

* May include otherwise Temporary Assistance for Needy Families eligible or otherwise Safety Net Assistance MOE eligible non-disabled two-parent cases.

Table 15
SAFETY NET ASSISTANCE-FNP-NON-CASH BY MAINTENANCE OF EFFORT STATUS
Maintenance of Effort (MOE) vs. Non-Maintenance of Effort (Non-MOE)
Cases, Recipients, Children, Adults and Expenditures by Local District
July 2015

Local District	Maintenance of Effort (MOE)					Non-Maintenance of Effort (Non-MOE)*				
	Cases	Recipients	Children	Adults	Expenditures	Cases	Recipients	Children	Adults	Expenditures
New York State	See Note	See Note	See Note	See Note	See Note	See Note	See Note	See Note	See Note	See Note
New York City	See Note	See Note	See Note	See Note	See Note	See Note	See Note	See Note	See Note	See Note
Rest of State	10,090	35,922	25,484	10,438	\$8,241,595	16,795	21,687	4,108	17,579	\$10,331,103
Albany	298	1,116	810	306	303,135	368	530	140	390	258,663
Allegany	34	107	73	34	20,438	89	104	13	91	46,496
Broome	332	1,183	829	354	229,287	637	858	219	639	364,346
Cattaraugus	11	40	29	11	6,475	102	106	12	94	55,058
Cayuga	43	150	107	43	26,649	103	122	17	105	56,952
Chautauqua	335	1,160	793	367	207,434	387	548	120	428	169,528
Chemung	27	103	76	27	17,829	53	59	5	54	31,174
Chenango	7	24	17	7	2,979	36	41	4	37	14,448
Clinton	26	91	64	27	15,464	94	103	9	94	57,749
Columbia	26	92	65	27	16,493	94	109	14	95	68,707
Cortland	21	69	47	22	13,152	132	139	4	135	85,378
Delaware	1	4	4	0	734	17	17	0	17	12,095
Dutchess	70	254	184	70	57,233	181	217	47	170	178,380
Erie	1,486	5,447	3,935	1,512	877,223	2,141	3,063	780	2,283	969,630
Essex	3	13	10	3	699	6	6	0	6	5,929
Franklin	37	106	69	37	21,258	87	125	30	95	40,342
Fulton	3	11	8	3	759	35	35	0	35	20,020
Genesee	15	53	37	16	7,832	55	65	10	55	42,930
Greene	29	94	67	27	13,631	65	70	4	66	44,399
Hamilton	0	0	0	0	0	2	2	0	2	372
Herkimer	19	70	50	20	13,665	82	87	6	81	41,323
Jefferson	36	121	86	35	19,206	189	216	23	193	107,348
Lewis	2	6	3	3	520	15	15	5	10	6,248
Livingston	36	114	75	39	22,307	73	105	28	77	37,656
Madison	13	51	37	14	7,539	55	55	1	54	28,832
Monroe	2,015	7,078	4,990	2,088	1,603,727	2,559	2,944	312	2,632	1,284,386
Montgomery	39	139	99	40	21,699	44	53	8	45	24,787
Nassau	769	2,507	1,716	791	873,888	1,292	1,611	252	1,359	791,887
Niagara	276	973	687	286	133,663	587	776	156	620	242,319
Oneida	406	1,640	1,211	429	263,632	481	802	264	538	243,973
Onondaga	541	2,099	1,557	542	338,914	567	1,003	375	628	300,894
Ontario	41	147	104	43	24,355	140	151	15	136	107,322
Orange	351	1,256	896	360	303,341	436	605	136	469	302,739
Orleans	44	152	107	45	29,665	118	131	11	120	52,832
Oswego	95	348	244	104	64,305	196	252	45	207	99,486
Otsego	0	0	0	0	0	27	28	4	24	24,658
Putnam	1	3	2	1	830	20	20	0	20	15,584
Rensselaer	240	869	619	250	151,093	109	232	93	139	79,616
Rockland	74	268	193	75	49,700	338	558	189	369	216,258
St. Lawrence	73	236	165	71	36,353	236	340	81	259	114,147
Saratoga	0	0	0	0	0	46	46	1	45	47,680
Schenectady	222	890	659	231	148,518	203	304	79	225	145,030
Schoharie	2	6	4	2	1,125	18	21	2	19	13,372
Schuyler	11	32	19	13	5,399	31	42	8	34	19,900
Seneca	17	58	40	18	9,317	42	47	6	41	26,754
Steuben	76	256	173	83	42,284	131	152	24	128	59,952
Suffolk	671	2,495	1,792	703	975,981	1,748	2,088	271	1,817	1,469,663
Sullivan	53	184	132	52	34,078	114	153	29	124	103,198
Tioga	9	26	20	6	7,383	26	26	1	25	28,492
Tompkins	55	190	131	59	28,127	155	177	13	164	79,613
Ulster	158	519	362	157	120,720	381	462	64	398	261,512
Warren	3	7	5	2	2,001	30	30	0	30	30,079
Washington	1	3	2	1	753	33	43	8	35	21,922
Wayne	13	38	26	12	7,713	93	102	16	86	46,616
Westchester	918	2,999	2,036	963	1,055,673	1,467	1,662	154	1,508	1,313,931
Wyoming	4	18	13	5	2,877	16	16	0	16	8,665
Yates	2	7	5	2	2,540	13	13	0	13	9,833

Note: A breakout of Safety Net Assistance-FNP-Cash and Safety Net Assistance-FNP-Non-Cash data is not available for New York City.

* The Non-MOE category includes otherwise Temporary Assistance for Needy Families eligible or otherwise Safety Net Assistance MOE eligible non-disabled two-parent cases.

Table 16
SUPPLEMENTAL NUTRITION ASSISTANCE PROGRAM
Households, Persons and Value of Supplemental Nutrition Assistance Program Benefits by Local District
July 2015

Local District	Total			Temporary Assistance			Non-Temporary Assistance		
	Households	Persons	SNAP Benefits	Households	Persons	SNAP Benefits	Households	Persons	SNAP Benefits
New York State	1,656,532	3,017,604	\$420,025,791	676,558	1,025,137	\$156,929,612	979,974	1,992,467	\$263,096,179
New York City	951,952	1,699,730	248,887,027	441,206	670,633	104,540,787	510,746	1,029,097	144,346,240
Rest of State	704,580	1,317,874	171,138,764	235,352	354,504	52,388,825	469,228	963,370	118,749,939
Albany	19,657	36,757	4,706,482	6,488	9,972	1,461,095	13,169	26,785	3,245,387
Allegany	3,292	6,176	733,157	1,203	1,682	246,818	2,089	4,494	486,339
Broome	17,101	31,699	4,096,412	6,868	10,804	1,640,096	10,233	20,895	2,456,316
Cattaraugus	6,506	12,571	1,502,791	1,818	2,302	349,159	4,688	10,269	1,153,632
Cayuga	5,594	10,762	1,337,747	1,572	2,366	354,599	4,022	8,396	983,148
Chautauqua	13,987	26,780	3,471,928	4,564	7,617	1,114,477	9,423	19,163	2,357,451
Chemung	8,215	15,902	2,079,350	2,256	2,894	443,887	5,959	13,008	1,635,463
Chenango	3,845	7,385	915,999	1,130	1,401	223,510	2,715	5,984	692,489
Clinton	6,803	11,620	1,441,703	2,437	3,133	476,025	4,366	8,487	965,678
Columbia	3,757	6,388	806,289	1,330	1,778	267,494	2,427	4,610	538,795
Cortland	3,750	6,804	839,431	1,165	1,662	256,377	2,585	5,142	583,054
Delaware	3,281	6,471	772,121	884	1,097	160,812	2,397	5,374	611,309
Dutchess	13,406	23,803	3,126,793	3,811	4,885	732,458	9,595	18,918	2,394,335
Erie	84,701	157,829	20,772,014	29,344	47,959	7,149,260	55,357	109,870	13,622,754
Essex	2,076	3,668	453,420	712	796	121,533	1,364	2,872	331,887
Franklin	4,133	7,510	950,496	1,543	2,059	315,572	2,590	5,451	634,924
Fulton	4,924	9,075	1,133,613	1,427	1,655	268,131	3,497	7,420	865,482
Genesee	3,242	6,022	728,520	904	1,176	180,132	2,338	4,846	548,388
Greene	3,273	5,774	745,601	1,106	1,507	223,625	2,167	4,267	521,976
Hamilton	236	398	49,137	61	70	11,620	175	328	37,517
Herkimer	5,431	10,272	1,236,976	1,347	1,779	272,446	4,084	8,493	964,530
Jefferson	8,312	15,626	1,930,328	2,464	3,380	507,191	5,848	12,246	1,423,137
Lewis	1,834	3,534	405,755	434	534	76,466	1,400	3,000	329,289
Livingston	3,911	7,265	916,806	1,364	2,128	318,689	2,547	5,137	598,117
Madison	4,578	8,971	1,096,263	1,064	1,412	207,662	3,514	7,559	888,601
Monroe	66,696	123,080	16,378,155	27,661	45,385	6,669,340	39,035	77,695	9,708,815
Montgomery	4,631	9,445	1,201,326	1,480	2,281	334,799	3,151	7,164	866,527
Nassau	41,052	66,098	8,638,518	16,806	23,293	3,440,083	24,246	42,805	5,198,435
Niagara	18,002	32,301	4,200,268	6,022	9,046	1,368,424	11,980	23,255	2,831,844
Oneida	20,500	41,511	5,241,673	8,133	14,468	2,068,697	12,367	27,043	3,172,976
Onondaga	38,731	74,090	9,536,294	13,409	22,895	3,269,776	25,322	51,195	6,266,518
Ontario	5,516	9,890	1,220,301	1,718	2,351	361,741	3,798	7,539	858,560
Orange	20,267	47,602	6,138,956	6,111	9,244	1,340,963	14,156	38,358	4,797,993
Orleans	3,175	6,101	720,991	1,029	1,539	230,276	2,146	4,562	490,715
Oswego	9,581	19,755	2,445,945	3,073	5,143	751,856	6,508	14,612	1,694,089
Otsego	3,257	6,000	720,185	891	1,010	157,875	2,366	4,990	562,310
Putnam	1,703	2,679	334,743	521	565	83,205	1,182	2,114	251,538
Rensselaer	9,120	18,197	2,264,236	3,436	6,132	840,345	5,684	12,065	1,423,891
Rockland	17,103	47,450	6,131,136	4,029	5,506	829,220	13,074	41,944	5,301,916
St. Lawrence	8,382	16,306	1,991,289	3,070	4,434	650,013	5,312	11,872	1,341,276
Saratoga	8,667	15,096	1,838,336	1,937	2,149	343,886	6,730	12,947	1,494,450
Schenectady	13,252	24,904	3,306,359	4,676	7,154	1,052,590	8,576	17,750	2,253,769
Schoharie	2,043	3,770	469,412	533	676	106,734	1,510	3,094	362,678
Schuyler	1,277	2,485	295,606	373	581	87,474	904	1,904	208,132
Seneca	1,826	3,405	427,695	604	864	126,310	1,222	2,541	301,385
Steuben	6,145	12,253	1,429,272	2,056	2,964	430,554	4,089	9,289	998,718
Suffolk	76,362	130,553	18,123,964	21,899	30,520	4,577,250	54,463	100,033	13,546,714
Sullivan	6,379	12,517	1,621,385	1,965	2,709	385,478	4,414	9,808	1,235,907
Tioga	3,118	6,309	737,579	781	1,033	153,162	2,337	5,276	584,417
Tompkins	4,960	8,730	1,124,237	1,547	2,134	331,489	3,413	6,596	792,748
Ulster	12,077	21,296	2,797,888	4,259	6,152	935,902	7,818	15,144	1,861,986
Warren	3,989	7,174	869,127	1,102	1,299	202,129	2,887	5,875	666,998
Washington	4,064	7,697	920,275	1,059	1,356	201,534	3,005	6,341	718,741
Wayne	5,669	10,516	1,266,588	1,725	2,216	341,539	3,944	8,300	925,049
Westchester	48,092	85,815	11,834,204	15,253	22,229	3,168,082	32,839	63,586	8,666,122
Wyoming	1,690	3,117	352,504	510	648	96,450	1,180	2,469	256,054
Yates	1,409	2,670	311,185	388	480	72,515	1,021	2,190	238,670

Note: Supplemental Nutrition Assistance Program households containing only Supplemental Security Income recipients or a mix of Temporary Assistance and Supplemental Security Income recipients are counted as Temporary Assistance.

Table 17
SUPPLEMENTAL SECURITY INCOME
 Recipients, Total Program Expenditures and Federal and State Shares, by Local District
 July 2015

Local District	Recipients	Expenditures		
		Total	Federal	State
New York State*	714,100	\$422,623,348	\$370,916,240	\$51,707,108
New York City	431,062	257,652,294	227,933,325	29,718,969
Rest of State	278,441	162,905,588	141,561,129	21,344,459
Albany	7,531	4,357,538	3,847,353	510,185
Allegany	1,581	892,338	778,744	113,594
Broome	7,385	4,424,332	3,967,021	457,311
Cattaraugus	2,655	1,477,132	1,287,544	189,588
Cayuga	1,979	1,153,305	991,385	161,920
Chautauqua	5,155	2,989,360	2,621,167	368,193
Chemung	3,604	2,042,466	1,797,857	244,609
Chenango	1,640	913,967	811,108	102,859
Clinton	3,180	1,796,391	1,569,787	226,604
Columbia	1,723	1,122,311	936,657	185,654
Cortland	1,304	810,504	714,716	95,788
Delaware	1,340	722,359	616,860	105,499
Dutchess	6,002	3,542,268	2,914,506	627,762
Erie	30,747	18,372,063	16,188,727	2,183,336
Essex	1,103	655,773	524,316	131,457
Franklin	1,854	1,089,829	932,241	157,588
Fulton	2,311	1,398,244	1,193,260	204,984
Genesee	1,309	823,045	703,556	119,489
Greene	1,543	872,651	761,754	110,897
Hamilton	65	39,565	35,643	3,922
Herkimer	1,809	983,993	845,885	138,108
Jefferson	3,064	1,717,470	1,486,594	230,876
Lewis	646	344,980	303,481	41,499
Livingston	1,312	755,277	680,734	74,543
Madison	1,487	860,957	756,883	104,074
Monroe	27,866	17,270,010	15,353,005	1,917,005
Montgomery	2,071	1,212,604	1,056,184	156,420
Nassau	19,331	10,871,754	9,217,734	1,654,020
Niagara	6,432	3,746,870	3,272,800	474,070
Oneida	8,967	5,379,448	4,774,991	604,457
Onondaga	15,519	9,524,932	8,552,189	972,743
Ontario	2,063	1,190,479	1,050,025	140,454
Orange	7,460	4,389,034	3,824,931	564,103
Orleans	1,051	619,766	551,724	68,042
Oswego	3,639	2,168,243	1,971,387	196,856
Otsego	1,532	942,323	804,008	138,315
Putnam	929	464,960	376,644	88,316
Rensselaer	4,905	3,013,843	2,616,041	397,802
Rockland	5,590	3,230,060	2,498,258	731,802
St. Lawrence	4,080	2,406,047	2,144,520	261,527
Saratoga	3,194	1,775,226	1,551,668	223,558
Schenectady	5,992	3,644,287	3,238,485	405,802
Schoharie	774	433,081	358,325	74,756
Schuyler	482	257,966	211,942	46,024
Seneca	839	487,245	428,423	58,822
Steuben	3,228	1,804,114	1,602,818	201,296
Suffolk	23,353	13,193,529	11,066,924	2,126,605
Sullivan	2,861	1,606,324	1,312,207	294,117
Tioga	1,279	738,024	657,387	80,637
Tompkins	1,708	951,192	812,175	139,017
Ulster	4,564	2,642,897	2,264,658	378,239
Warren	1,768	942,821	813,260	129,561
Washington	1,737	937,799	815,772	122,027
Wayne	2,338	1,398,713	1,256,133	142,580
Westchester	19,277	10,748,758	9,176,767	1,571,991
Wyoming	723	426,819	379,340	47,479
Yates	560	328,302	282,625	45,677
Mental Hygiene	4,597	2,065,466	1,421,786	643,680

* Only New York State includes Mental Hygiene

Table 18
SUPPLEMENTAL SECURITY INCOME
 Recipients by Living Arrangement and Location
 July 2015

Living Arrangement	New York State	New York City	Rest of State	Mental Hygiene
Living Alone	344,269	224,975	119,293	1
Living With Others	280,520	162,267	118,245	8
Living in Household of Another	29,965	17,916	12,047	2
Congregate Care Level 1	2,501	292	560	1,649
Congregate Care Level 2	26,261	9,594	15,851	816
Congregate Care Level 3	12,613	6,355	6,258	0
Title XIX Institution	13,178	8,060	4,502	616
Other*	4,793	1,658	1,685	1,450
Total	714,100	431,117	278,441	4,542

Table 19
SUPPLEMENTAL SECURITY INCOME
 Recipients by Living Arrangement and Category of Assistance
 July 2015

Living Arrangement	Total	Category of Assistance		
		Aged	Blind	Disabled
Living Alone	344,269	98,184	1,283	244,802
Living With Others	280,520	24,618	1,224	254,678
Living in Household of Another	29,965	8,301	209	21,455
Congregate Care Level 1	2,501	276	14	2,211
Congregate Care Level 2	26,261	1,553	90	24,618
Congregate Care Level 3	12,613	4,966	34	7,613
Title XIX Institution & Other*	17,971	2,716	94	15,161
Total	714,100	140,614	2,948	570,538

* "Other" includes recipients either a) residing in a private medical facility and Medicaid is paying for less than 50% of the cost of care, b) residing in certain publicly operated residential facilities serving 16 or fewer residents, or c) residing in a public emergency shelter for six calendar months during a nine month period. Such cases receive no state Supplemental Security Income supplement.

Table 20
CHILD SUPPORT COLLECTIONS (IV-D)
July 2015

Local District	Total	Current Assistance	Former Assistance	Never Assistance
New York State	\$167,404,630.20	\$6,246,684.95	\$83,198,199.09	\$77,959,746.17
New York City	69,300,556.34	3,003,315.82	35,423,939.28	30,873,301.24
Rest of State	98,104,073.87	3,243,369.13	47,774,259.81	47,086,444.93
Albany	2,721,496.51	75,173.34	1,193,473.29	1,452,849.88
Allegany	546,861.77	26,049.74	353,413.20	167,398.83
Broome	1,524,746.65	89,580.33	808,729.07	626,437.25
Cattaraugus	937,416.60	31,137.60	545,995.00	360,284.00
Cayuga	854,490.94	34,345.26	491,776.94	328,368.74
Chautauqua	1,241,936.66	77,383.45	789,053.49	375,499.72
Chemung	814,185.09	28,072.69	498,795.65	287,316.75
Chenango	487,890.72	16,288.20	288,369.76	183,232.76
Clinton	933,880.31	42,415.76	496,640.07	394,824.48
Columbia	569,742.14	19,883.33	312,770.84	237,087.97
Cortland	453,004.42	19,039.35	277,771.74	156,193.33
Delaware	393,488.82	20,324.35	253,810.22	119,354.25
Dutchess	2,751,705.47	54,572.71	1,042,344.41	1,654,788.35
Erie	6,972,238.33	316,491.88	3,899,915.91	2,755,830.54
Essex	317,436.03	8,152.30	161,911.37	147,372.36
Franklin	502,937.47	16,755.82	246,036.74	240,144.91
Fulton	587,586.34	14,943.26	395,920.65	176,722.43
Genesee	552,185.36	11,146.43	292,071.28	248,967.65
Greene	413,513.53	10,025.99	212,725.99	190,761.55
Hamilton	24,764.53	796.29	14,433.92	9,534.32
Herkimer	501,081.53	18,333.35	291,805.85	190,942.33
Jefferson	1,467,827.70	50,717.03	623,510.31	793,600.36
Lewis	382,550.26	6,286.43	262,271.91	113,991.92
Livingston	621,741.09	35,113.14	362,193.99	224,433.96
Madison	597,348.55	16,374.96	336,184.54	244,789.05
Monroe	6,485,846.41	285,007.83	3,554,958.66	2,645,879.92
Montgomery	536,425.72	29,498.07	344,143.12	162,784.53
Nassau	9,135,419.08	162,185.89	3,389,745.60	5,583,487.59
Niagara	1,878,110.86	110,298.18	1,130,621.74	637,190.94
Oneida	1,713,759.99	103,371.34	996,536.04	613,852.61
Onondaga	4,177,464.19	145,802.59	2,410,167.36	1,621,494.24
Ontario	1,094,460.85	43,105.47	582,667.88	468,687.50
Orange	3,748,562.16	102,290.10	1,518,997.66	2,127,274.40
Orleans	400,170.00	24,046.56	246,937.16	129,186.28
Oswego	1,273,545.01	62,269.80	767,571.58	443,703.63
Otsego	430,273.22	9,495.30	209,670.26	211,107.66
Putnam	718,941.54	5,578.45	238,711.38	474,651.71
Rensselaer	1,792,691.64	80,028.90	764,964.68	947,698.06
Rockland	2,571,326.59	51,804.88	1,049,921.28	1,469,600.43
St. Lawrence	1,131,225.61	44,704.27	728,430.12	358,091.22
Saratoga	1,862,127.48	18,967.89	789,975.82	1,053,183.77
Schenectady	1,552,580.49	41,957.82	643,126.68	867,495.99
Schoharie	342,989.77	12,406.08	189,823.05	140,760.64
Schuyler	181,995.05	8,348.49	131,047.50	42,599.06
Seneca	326,421.42	12,432.75	171,936.32	142,052.35
Steuben	982,770.37	38,125.02	612,638.27	332,007.08
Suffolk	14,653,111.96	371,872.31	6,779,985.90	7,501,253.75
Sullivan	770,601.16	24,575.85	393,324.59	352,700.72
Tioga	507,596.16	22,267.33	285,507.74	199,821.09
Tompkins	675,746.93	30,118.65	330,463.51	315,164.77
Ulster	1,731,885.55	96,176.78	867,547.27	768,161.50
Warren	832,331.91	18,332.96	433,354.70	380,644.25
Washington	720,974.22	26,560.62	376,613.50	317,800.10
Wayne	962,758.78	27,173.29	490,347.39	445,238.10
Westchester	7,111,987.04	170,698.35	2,567,410.04	4,373,878.65
Wyoming	443,643.14	15,607.88	216,509.24	211,526.02
Yates	184,272.75	8,856.44	108,677.63	66,738.68

Table 21
AGGREGATE CLAIMS
TOTAL TEMPORARY ASSISTANCE
Family Assistance and Safety Net Assistance
July 2015

Month	New York State			New York City			Rest of State		
	Recipients	Net Expenditures	Monthly Average Payment	Recipients	Net Expenditures	Monthly Average Payment	Recipients	Net Expenditures	Monthly Average Payment
August 2013	573,835	\$210,359,559	\$366.59	345,020	\$142,617,183	\$413.36	228,815	\$67,742,376	\$296.06
September 2013	569,174	\$227,541,885	\$399.78	341,812	\$160,904,569	\$470.74	227,362	\$66,637,316	\$293.09
October 2013	573,292	\$221,090,913	\$385.65	342,337	\$151,890,249	\$443.69	230,955	\$69,200,664	\$299.63
November 2013	568,983	\$218,665,849	\$384.31	340,896	\$151,876,636	\$445.52	228,087	\$66,789,213	\$292.82
December 2013	566,424	\$289,627,659	\$511.33	339,513	\$215,151,686	\$633.71	226,911	\$74,475,973	\$328.22
January 2014	560,991	\$214,034,507	\$381.53	333,708	\$146,731,005	\$439.70	227,283	\$67,303,502	\$296.12
February 2014	561,525	\$210,098,286	\$374.16	333,162	\$140,749,161	\$422.46	228,363	\$69,349,125	\$303.68
March 2014	566,456	\$228,209,088	\$402.87	334,732	\$155,317,544	\$464.01	231,724	\$72,891,544	\$314.56
April 2014	565,463	\$226,859,192	\$401.19	332,074	\$151,598,291	\$456.52	233,389	\$75,260,901	\$322.47
May 2014	564,612	\$219,689,737	\$389.10	330,872	\$144,710,332	\$437.36	233,740	\$74,979,405	\$320.78
June 2014	563,201	\$223,759,118	\$397.30	331,315	\$151,675,137	\$457.80	231,886	\$72,083,981	\$310.86
July 2014	562,676	\$213,011,582	\$378.57	331,407	\$143,826,733	\$433.99	231,269	\$69,184,849	\$299.15
August 2014	565,719	\$204,522,862	\$361.53	336,383	\$135,173,840	\$401.85	229,336	\$69,349,022	\$302.39
September 2014	567,809	\$227,650,478	\$400.93	339,380	\$158,726,208	\$467.69	228,429	\$68,924,270	\$301.73
October 2014	571,842	\$243,254,336	\$425.39	339,804	\$170,325,629	\$501.25	232,038	\$72,928,707	\$314.30
November 2014	566,688	\$206,226,591	\$363.92	341,498	\$142,024,104	\$415.89	225,190	\$64,202,487	\$285.10
December 2014	573,328	\$295,765,651	\$515.88	344,154	\$219,794,242	\$638.65	229,174	\$75,971,409	\$331.50
January 2015	569,551	\$253,888,676	\$445.77	343,400	\$185,384,661	\$539.85	226,151	\$68,504,015	\$302.91
February 2015	570,637	\$219,658,945	\$384.94	346,155	\$152,608,464	\$440.87	224,482	\$67,050,481	\$298.69
March 2015	577,132	\$238,002,885	\$412.39	349,639	\$163,315,830	\$467.10	227,493	\$74,687,055	\$328.30
April 2015	575,508	\$230,438,220	\$400.41	349,039	\$158,940,051	\$455.36	226,469	\$71,498,169	\$315.71
May 2015	573,167	\$219,683,438	\$383.28	350,112	\$150,016,867	\$428.48	223,055	\$69,666,571	\$312.33
June 2015	573,775	\$222,728,207	\$388.18	351,701	\$153,747,350	\$437.15	222,074	\$68,980,857	\$310.62
July 2015	573,450	\$218,334,667	\$380.74	352,855	\$149,994,298	\$425.09	220,595	\$68,340,369	\$309.80

Note: Data pursuant to a New York State Legislative mandate S. 6057-B/A. 9557-B, Chapter 57, L. 2004.

Based on local district claims submitted on claims Schedules A and C. Includes reimbursable expenditures for basic assistance, rent supplements, family shelters, domestic violence shelters, security deposits, transitional services, diversion transportation, diversion payments, and other non-assistance. These claims are net of cancellations and refunds, and include any reconciliations and supplemental claims applied to the month after initial expenditure reporting is done. Thus, these data differ from the expenditure data presented elsewhere in this document, which are derived from original payment issuance activity during the month, net of cancellations and refunds in that month.

District claiming activity for recent months is generally not complete before the statutorily required due date for this report. Thus, claims for recent months may appear substantially below those for earlier months. Claims tables in future months of this report will continue to include the historical periods above, adjusted for claiming activity occurring subsequent to this report.

Table 22
AGGREGATE CLAIMS
FEDERALLY PARTICIPATING - TANF
Family Assistance-FP and Safety Net Assistance-FP
July 2015

Month	New York State			New York City			Rest of State		
	Recipients	Net Expenditures	Monthly Average Payment	Recipients	Net Expenditures	Monthly Average Payment	Recipients	Net Expenditures	Monthly Average Payment
August 2013	265,230	\$89,143,386	\$336.10	144,486	\$55,672,931	\$385.32	120,744	\$33,470,455	\$277.20
September 2013	263,064	\$105,088,260	\$399.48	142,765	\$71,617,079	\$501.64	120,299	\$33,471,181	\$278.23
October 2013	265,039	\$96,154,933	\$362.80	143,191	\$61,776,738	\$431.43	121,848	\$34,378,195	\$282.14
November 2013	261,958	\$96,127,899	\$366.96	141,744	\$63,281,911	\$446.45	120,214	\$32,845,988	\$273.23
December 2013	260,468	\$133,229,448	\$511.50	141,437	\$95,747,960	\$676.97	119,031	\$37,481,488	\$314.89
January 2014	256,124	\$92,822,352	\$362.41	137,459	\$59,856,956	\$435.45	118,665	\$32,965,396	\$277.80
February 2014	255,541	\$89,422,412	\$349.93	136,833	\$56,115,950	\$410.11	118,708	\$33,306,462	\$280.57
March 2014	255,898	\$100,952,503	\$394.50	136,966	\$65,683,012	\$479.56	118,932	\$35,269,491	\$296.55
April 2014	253,936	\$97,135,029	\$382.52	134,985	\$61,105,554	\$452.68	118,951	\$36,029,475	\$302.89
May 2014	253,505	\$92,440,031	\$364.65	134,113	\$57,980,291	\$432.32	119,392	\$34,459,740	\$288.63
June 2014	253,465	\$101,630,795	\$400.97	134,148	\$67,116,281	\$500.32	119,317	\$34,514,514	\$289.27
July 2014	252,643	\$86,880,628	\$343.89	133,462	\$53,597,492	\$401.59	119,181	\$33,283,136	\$279.27
August 2014	254,875	\$83,867,022	\$329.05	136,240	\$50,504,032	\$370.70	118,635	\$33,362,990	\$281.22
September 2014	254,656	\$100,000,608	\$392.69	136,630	\$66,244,980	\$484.85	118,026	\$33,755,628	\$286.00
October 2014	255,720	\$104,840,640	\$409.98	136,355	\$69,873,173	\$512.44	119,365	\$34,967,467	\$292.95
November 2014	255,842	\$86,424,571	\$337.80	139,293	\$55,125,642	\$395.75	116,549	\$31,298,929	\$268.55
December 2014	254,126	\$113,474,395	\$446.53	137,103	\$77,034,245	\$561.87	117,023	\$36,440,150	\$311.39
January 2015	251,342	\$107,422,394	\$427.40	136,237	\$74,902,724	\$549.80	115,105	\$32,519,670	\$282.52
February 2015	250,234	\$88,892,322	\$355.24	136,216	\$57,291,721	\$420.59	114,018	\$31,600,601	\$277.15
March 2015	251,794	\$100,819,886	\$400.41	137,283	\$66,024,803	\$480.94	114,511	\$34,795,083	\$303.86
April 2015	248,893	\$92,253,092	\$370.65	135,267	\$59,536,142	\$440.14	113,626	\$32,716,950	\$287.94
May 2015	248,133	\$89,539,941	\$360.85	136,046	\$57,113,934	\$419.81	112,087	\$32,426,007	\$289.29
June 2015	247,686	\$94,722,930	\$382.43	135,971	\$62,426,765	\$459.12	111,715	\$32,296,165	\$289.09
July 2015	247,654	\$87,153,993	\$351.92	136,308	\$55,087,965	\$404.14	111,346	\$32,066,028	\$287.99

Note: Data pursuant to a New York State Legislative mandate S. 6057-B/A. 9557-B, Chapter 57, L. 2004.
Based on local district claims submitted on claims Schedules A and C. Includes reimbursable expenditures for basic assistance, rent supplements, family shelters, domestic violence shelters, security deposits, transitional services, diversion transportation, diversion payments, and other non-assistance. These claims are net of cancellations and refunds, and include any reconciliations and supplemental claims applied to the month after initial expenditure reporting is done. Thus, these data differ from the expenditure data presented elsewhere in this document, which are derived from original payment issuance activity during the month, net of cancellations and refunds in that month.
District claiming activity for recent months is generally not complete before the statutorily required due date for this report. Thus, claims for recent months may appear substantially below those for earlier months. Claims tables in future months of this report will continue to include the historical periods above, adjusted for claiming activity occurring subsequent to this report.

Table 23
AGGREGATE CLAIMS
FEDERALLY NON-PARTICIPATING
Safety Net Assistance-FNP Maintenance of Effort
July 2015

Month	New York State			New York City			Rest of State		
	Recipients	Net Expenditures	Monthly Average Payment	Recipients	Net Expenditures	Monthly Average Payment	Recipients	Net Expenditures	Monthly Average Payment
August 2013	117,690	\$30,713,124	\$260.97	80,021	\$22,284,105	\$278.48	37,669	\$8,429,019	\$223.77
September 2013	117,493	\$41,602,956	\$354.09	79,627	\$33,179,665	\$416.69	37,866	\$8,423,291	\$222.45
October 2013	116,490	\$35,164,890	\$301.87	78,167	\$26,249,399	\$335.81	38,323	\$8,915,491	\$232.64
November 2013	118,437	\$34,340,355	\$289.95	80,274	\$25,654,665	\$319.59	38,163	\$8,685,690	\$227.59
December 2013	117,452	\$51,690,718	\$440.10	78,754	\$42,298,783	\$537.10	38,698	\$9,391,935	\$242.70
January 2014	116,278	\$34,146,338	\$293.66	77,255	\$25,344,805	\$328.07	39,023	\$8,801,533	\$225.55
February 2014	116,505	\$31,249,687	\$268.23	77,327	\$22,124,863	\$286.12	39,178	\$9,124,824	\$232.91
March 2014	117,670	\$41,128,302	\$349.52	78,426	\$31,555,885	\$402.37	39,244	\$9,572,417	\$243.92
April 2014	114,869	\$35,803,039	\$311.69	75,862	\$25,646,627	\$338.07	39,007	\$10,156,412	\$260.37
May 2014	114,478	\$33,507,779	\$292.70	75,265	\$24,181,272	\$321.28	39,213	\$9,326,507	\$237.84
June 2014	114,786	\$38,976,446	\$339.56	75,107	\$29,713,919	\$395.62	39,679	\$9,262,527	\$233.44
July 2014	114,537	\$32,490,337	\$283.67	74,604	\$23,371,909	\$313.28	39,933	\$9,118,428	\$228.34
August 2014	116,548	\$29,347,170	\$251.80	77,266	\$20,625,986	\$266.95	39,282	\$8,721,184	\$222.01
September 2014	117,457	\$39,816,510	\$338.99	77,600	\$30,949,827	\$398.84	39,857	\$8,866,683	\$222.46
October 2014	117,954	\$36,920,579	\$313.01	77,641	\$27,254,967	\$351.04	40,313	\$9,665,612	\$239.76
November 2014	116,448	\$31,064,132	\$266.76	76,629	\$22,565,979	\$294.48	39,819	\$8,498,153	\$213.42
December 2014	121,796	\$57,903,564	\$475.41	80,895	\$48,437,391	\$598.77	40,901	\$9,466,173	\$231.44
January 2015	120,097	\$43,742,063	\$364.22	79,585	\$34,571,287	\$434.39	40,512	\$9,170,776	\$226.37
February 2015	122,369	\$34,736,336	\$283.87	82,108	\$25,627,840	\$312.12	40,261	\$9,108,496	\$226.24
March 2015	121,592	\$42,830,370	\$352.25	81,214	\$32,916,088	\$405.30	40,378	\$9,914,282	\$245.54
April 2015	121,779	\$36,466,493	\$299.45	81,603	\$26,620,651	\$326.22	40,176	\$9,845,842	\$245.07
May 2015	122,015	\$33,591,105	\$275.30	82,123	\$24,140,499	\$293.96	39,892	\$9,450,606	\$236.90
June 2015	122,737	\$40,161,807	\$327.22	82,813	\$31,055,912	\$375.01	39,924	\$9,105,895	\$228.08
July 2015	122,406	\$34,065,382	\$278.30	82,218	\$24,959,780	\$303.58	40,188	\$9,105,602	\$226.58

Note: Data pursuant to a New York State Legislative mandate S. 6057-B/A. 9557-B, Chapter 57, L. 2004.

Based on local district claims submitted on claims Schedules A and C. Includes reimbursable expenditures for basic assistance, rent supplements, family shelters, domestic violence shelters, security deposits, transitional services, diversion transportation, diversion payments, and other non-assistance. These claims are net of cancellations and refunds, and include any reconciliations and supplemental claims applied to the month after initial expenditure reporting is done. Thus, these data differ from the expenditure data presented elsewhere in this document, which are derived from original payment issuance activity during the month, net of cancellations and refunds in that month.

District claiming activity for recent months is generally not complete before the statutorily required due date for this report. Thus, claims for recent months may appear substantially below those for earlier months. Claims tables in future months of this report will continue to include the historical periods above, adjusted for claiming activity occurring subsequent to this report.

Table 24
AGGREGATE CLAIMS
FEDERALLY NON-PARTICIPATING
Safety Net Assistance-FNP and Family Assistance-FNP Non-Maintenance of Effort
July 2015

Month	New York State			New York City			Rest of State		
	Recipients	Net Expenditures	Monthly Average Payment	Recipients	Net Expenditures	Monthly Average Payment	Recipients	Net Expenditures	Monthly Average Payment
August 2013	190,915	\$90,503,049	\$474.05	120,513	\$64,660,147	\$536.54	70,402	\$25,842,902	\$367.08
September 2013	188,617	\$80,850,669	\$428.65	119,420	\$56,107,825	\$469.84	69,197	\$24,742,844	\$357.57
October 2013	191,763	\$89,771,090	\$468.14	120,979	\$63,864,112	\$527.89	70,784	\$25,906,978	\$366.00
November 2013	188,588	\$88,197,595	\$467.67	118,878	\$62,940,060	\$529.45	69,710	\$25,257,535	\$362.32
December 2013	188,504	\$104,707,493	\$555.47	119,322	\$77,104,943	\$646.19	69,182	\$27,602,550	\$398.98
January 2014	188,589	\$87,065,817	\$461.67	118,994	\$61,529,244	\$517.08	69,595	\$25,536,573	\$366.93
February 2014	189,479	\$89,426,187	\$471.96	119,002	\$62,508,348	\$525.27	70,477	\$26,917,839	\$381.94
March 2014	192,888	\$86,128,283	\$446.52	119,340	\$58,078,647	\$486.67	73,548	\$28,049,636	\$381.38
April 2014	196,658	\$93,921,124	\$477.59	121,227	\$64,846,110	\$534.91	75,431	\$29,075,014	\$385.45
May 2014	196,629	\$93,741,927	\$476.75	121,494	\$62,548,769	\$514.83	75,135	\$31,193,158	\$415.16
June 2014	194,950	\$83,151,877	\$426.53	122,060	\$54,844,937	\$449.33	72,890	\$28,306,940	\$388.35
July 2014	195,496	\$93,640,617	\$478.99	123,341	\$66,857,332	\$542.05	72,155	\$26,783,285	\$371.19
August 2014	194,296	\$91,308,670	\$469.95	122,877	\$64,043,822	\$521.20	71,419	\$27,264,848	\$381.76
September 2014	195,696	\$87,833,360	\$448.83	125,150	\$61,531,401	\$491.66	70,546	\$26,301,959	\$372.83
October 2014	198,168	\$101,493,117	\$512.16	125,808	\$73,197,489	\$581.82	72,360	\$28,295,628	\$391.04
November 2014	194,398	\$88,737,888	\$456.48	125,576	\$64,332,483	\$512.30	68,822	\$24,405,405	\$354.62
December 2014	197,406	\$124,387,692	\$630.11	126,156	\$94,322,606	\$747.67	71,250	\$30,065,086	\$421.97
January 2015	198,112	\$102,724,219	\$518.52	127,578	\$75,910,650	\$595.01	70,534	\$26,813,569	\$380.15
February 2015	198,034	\$96,030,287	\$484.92	127,831	\$69,688,903	\$545.16	70,203	\$26,341,384	\$375.22
March 2015	203,746	\$94,352,629	\$463.09	131,142	\$64,374,939	\$490.88	72,604	\$29,977,690	\$412.89
April 2015	204,836	\$101,718,635	\$496.59	132,169	\$72,783,258	\$550.68	72,667	\$28,935,377	\$398.19
May 2015	203,019	\$96,552,392	\$475.58	131,943	\$68,762,434	\$521.15	71,076	\$27,789,958	\$390.99
June 2015	203,352	\$87,843,470	\$431.98	132,917	\$60,264,673	\$453.40	70,435	\$27,578,797	\$391.55
July 2015	203,390	\$97,115,292	\$477.48	134,329	\$69,946,553	\$520.71	69,061	\$27,168,739	\$393.40

Note: Data pursuant to a New York State Legislative mandate S. 6057-B/A. 9557-B, Chapter 57, L. 2004.

Based on local district claims submitted on claims Schedules A and C. Includes reimbursable expenditures for basic assistance, rent supplements, family shelters, domestic violence shelters, security deposits, transitional services, diversion transportation, diversion payments, and other non-assistance. These claims are net of cancellations and refunds, and include any reconciliations and supplemental claims applied to the month after initial expenditure reporting is done. Thus, these data differ from the expenditure data presented elsewhere in this document, which are derived from original payment issuance activity during the month, net of cancellations and refunds in that month.

District claiming activity for recent months is generally not complete before the statutorily required due date for this report. Thus, claims for recent months may appear substantially below those for earlier months. Claims tables in future months of this report will continue to include the historical periods above, adjusted for claiming activity occurring subsequent to this report.

Table 25
HOME ENERGY ASSISTANCE PROGRAM*
Number and Dollar Amount of Benefits Authorized and Administrative Allocations - Federal Fiscal Year to Date
July 2015

Local District	Benefits Authorized		Administrative Allocations
	Number	Dollar Amount	
New York State	1,642,155	\$315,698,998	\$22,163,703
New York City	793,385	39,752,524	6,011,430
Rest of State	848,770	275,946,474	16,152,273
Albany	21,023	5,618,222	280,463
Allegany	6,238	2,709,180	159,968
Broome	21,109	7,159,091	370,297
Cattaraugus	11,398	4,391,198	265,711
Cayuga	7,921	3,175,281	168,152
Chautauqua	18,624	6,578,566	399,629
Chemung	9,983	2,988,002	157,417
Chenango	7,123	3,346,736	188,389
Clinton	13,259	6,668,134	324,815
Columbia	5,708	2,344,836	121,613
Cortland	5,410	1,972,966	122,529
Delaware	6,602	3,105,063	162,462
Dutchess	16,351	4,863,423	275,891
Erie	122,910	34,801,016	2,767,015
Essex	3,707	1,792,331	102,176
Franklin	8,853	4,379,166	219,367
Fulton	8,483	3,658,632	217,146
Genesee	4,685	1,553,181	102,673
Greene	5,903	2,667,461	154,000
Hamilton	514	245,348	13,991
Herkimer	9,374	3,907,496	203,771
Jefferson	11,787	4,729,650	252,407
Lewis	3,763	1,924,170	103,302
Livingston	5,715	2,301,891	129,281
Madison	7,219	3,089,935	171,450
Monroe	66,839	16,836,676	814,572
Montgomery	7,287	3,030,129	173,154
Nassau	27,309	4,861,071	281,629
Niagara	23,650	7,099,218	424,758
Oneida	30,359	11,459,381	672,142
Onondaga	40,577	11,424,196	621,383
Ontario	7,768	2,579,820	132,975
Orange	21,725	6,718,436	393,665
Orleans	4,547	1,961,840	116,132
Oswego	12,393	5,430,563	285,032
Otsego	6,740	3,244,027	175,733
Putnam	2,213	728,975	41,797
Rensselaer	11,677	3,910,780	220,169
Rockland	15,988	3,353,780	179,269
St. Lawrence	16,084	7,180,979	423,378
Saratoga	14,119	5,997,814	331,513
Schenectady	13,110	3,820,724	216,630
Schoharie	4,097	2,030,676	113,508
Schuyler	2,575	1,293,407	70,014
Seneca	3,244	1,255,726	69,060
Steuben	11,503	4,591,559	297,123
Suffolk	53,947	17,183,545	937,692
Sullivan	9,403	3,823,522	227,275
Tioga	5,908	2,807,912	146,159
Tompkins	6,755	2,161,852	111,030
Ulster	19,546	7,461,953	417,598
Warren	6,637	2,788,305	167,869
Washington	6,324	2,961,983	170,033
Wayne	7,511	2,958,167	136,378
Westchester	39,630	2,769,715	223,130
Wyoming	3,061	1,194,377	73,052
Yates	2,582	1,054,391	54,506

* Please Note: The 2015 Home Energy Assistance Program Federal Fiscal Year is October 1, 2014 through September 30, 2015.

Table 26
HOME ENERGY ASSISTANCE PROGRAM - NON-EMERGENCY*
 Number, Total Dollar Amount and Average Dollar Amount of Benefits Authorized - Federal Fiscal Year to Date
 July 2015

Local District	Autopay			Regular Non-Autopay			Cooling Assistance Component		
	Benefits Authorized	Dollar Amount Authorized	Average Dollar Amount	Benefits Authorized	Dollar Amount Authorized	Average Dollar Amount	Benefits Authorized	Dollar Amount Authorized	Average Dollar Amount
New York State	1,260,387	\$145,156,045	\$115	222,115	\$98,409,367	\$443	2,876	\$2,013,590	\$700
New York City	767,141	30,579,596	40	20,461	7,059,566	345	377	278,830	740
Rest of State	493,246	114,576,449	232	201,654	91,349,801	453	2,499	1,734,760	694
Albany	15,360	3,120,710	203	4,269	1,708,870	400	34	23,450	690
Allegany	2,348	886,175	377	2,247	1,034,324	460	73	48,686	667
Broome	11,987	2,982,178	249	5,780	2,467,589	427	39	26,240	673
Cattaraugus	5,188	1,687,728	325	3,699	1,644,747	445	140	88,100	629
Cayuga	3,721	1,187,348	319	2,539	1,141,760	450	18	13,154	731
Chautauqua	9,810	3,005,637	306	5,841	2,372,988	406	99	74,989	757
Chemung	5,918	1,228,098	208	2,803	1,104,221	394	12	8,780	732
Chenango	2,676	965,629	361	2,409	1,284,119	533	11	7,465	679
Clinton	4,987	2,134,018	428	3,095	1,675,515	541	48	31,092	648
Columbia	2,905	843,596	290	1,678	888,626	530	11	8,738	794
Cortland	2,746	753,058	274	1,624	746,398	460	4	2,035	509
Delaware	2,521	927,434	368	2,081	1,114,891	536	35	18,412	526
Dutchess	10,702	2,051,607	192	3,347	1,611,347	481	19	13,489	710
Erie	61,325	15,286,371	249	32,849	12,428,559	378	858	636,000	741
Essex	1,374	490,106	357	1,431	817,068	571	2	1,345	673
Franklin	3,056	1,153,688	378	2,328	1,325,668	569	4	1,910	478
Fulton	3,644	1,219,180	335	2,559	1,245,290	487	16	10,399	650
Genesee	2,663	701,077	263	1,357	597,625	440	40	29,362	734
Greene	2,427	797,964	329	1,755	950,812	542	7	4,217	602
Hamilton	193	64,683	335	205	117,685	574	1	610	610
Herkimer	4,127	1,294,176	314	2,968	1,386,984	467	27	17,766	658
Jefferson	6,019	1,881,388	313	3,238	1,527,955	472	83	60,841	733
Lewis	1,295	586,252	453	1,186	651,668	549	2	1,331	666
Livingston	2,869	970,939	338	1,623	750,646	463	22	14,422	656
Madison	3,112	980,073	315	2,178	1,075,830	494	14	8,092	578
Monroe	50,620	10,201,380	202	10,705	3,945,659	369	42	32,000	762
Montgomery	3,386	1,100,957	325	2,164	1,023,690	473	13	6,368	490
Nassau	24,319	2,428,159	100	1,479	1,709,091	1,156	43	32,873	764
Niagara	13,828	3,354,970	243	6,159	2,446,998	397	195	136,823	702
Oneida	15,034	4,075,885	271	8,750	3,927,831	449	73	49,171	674
Onondaga	27,540	6,066,482	220	9,601	3,685,948	384	27	15,068	558
Ontario	4,470	1,115,087	249	2,255	966,950	429	22	17,115	778
Orange	13,323	2,725,367	205	5,040	2,270,155	450	26	20,520	789
Orleans	1,926	726,926	377	1,497	707,498	473	23	16,170	703
Oswego	6,570	2,443,286	372	3,321	1,681,492	506	17	5,037	296
Otsego	2,436	880,886	362	2,138	1,179,234	552	7	3,803	543
Putnam	1,278	253,979	199	673	343,235	510	2	1,530	765
Rensselaer	6,962	1,609,512	231	2,924	1,354,223	463	79	49,140	622
Rockland	12,696	1,939,270	153	1,717	639,976	373	1	706	706
St. Lawrence	6,054	2,164,920	358	4,350	2,289,513	526	46	24,468	532
Saratoga	6,818	2,243,715	329	3,699	1,834,252	496	42	31,208	743
Schenectady	9,514	2,273,435	239	2,496	1,015,724	407	24	18,385	766
Schoharie	1,509	619,589	411	1,233	672,374	545	6	2,941	490
Schuyler	880	357,159	406	850	448,495	528	7	5,226	747
Seneca	1,539	406,780	264	1,127	542,792	482	10	5,597	560
Steuben	4,306	1,398,871	325	4,234	1,917,456	453	52	28,715	552
Suffolk	34,959	7,818,749	224	9,765	4,941,349	506	5	3,868	774
Sullivan	4,256	1,041,840	245	2,491	1,382,871	555	7	3,686	527
Tioga	2,348	942,188	401	1,844	954,480	518	7	5,350	764
Tompkins	4,082	880,459	216	1,613	753,130	467	3	1,751	584
Ulster	10,005	2,472,739	247	4,395	2,332,033	531	22	15,440	702
Warren	3,036	960,047	316	2,002	987,466	493	3	1,126	375
Washington	2,532	955,161	377	1,974	1,027,469	521	10	5,500	550
Wayne	4,277	1,418,795	332	2,134	967,942	454	20	15,033	752
Westchester	37,254	1,687,174	45	1,881	797,087	424	14	10,900	779
Wyoming	1,385	460,178	332	1,211	537,604	444	26	15,212	585
Yates	1,131	353,391	312	843	394,599	468	6	3,105	518

* Please Note: The 2015 Home Energy Assistance Program Federal Fiscal Year is October 1, 2014 through September 30, 2015.

Table 27
HOME ENERGY ASSISTANCE PROGRAM - EMERGENCY*
 Number, Total Dollar Amount and Average Dollar Amount of Benefits Authorized - Federal Fiscal Year to Date
 July 2015

Local District	Emergency			Furnace Replacement			Furnace Repair & Repair/Replacement Estimates		
	Benefits Authorized	Dollar Amount Authorized	Average Dollar Amount	Benefits Authorized	Dollar Amount Authorized	Average Dollar Amount	Benefits Authorized	Dollar Amount Authorized	Average Dollar Amount
New York State	155,279	\$66,990,391	\$431	795	\$2,723,200	\$3,425	703	\$406,405	\$578
New York City	5,363	1,592,947	297	42	240,693	5,731	1	892	892
Rest of State	149,916	65,397,444	436	753	2,482,507	3,297	702	405,513	578
Albany	1,320	648,940	492	24	110,651	4,610	16	5,601	350
Allegany	1,504	632,820	421	29	90,982	3,137	37	16,193	438
Broome	3,267	1,635,990	501	11	39,644	3,604	25	7,450	298
Cattaraugus	2,326	920,520	396	14	43,492	3,107	31	6,611	213
Cayuga	1,616	803,195	497	6	21,564	3,594	21	8,260	393
Chautauqua	2,822	1,034,610	367	20	58,033	2,902	32	32,309	1,010
Chemung	1,231	601,260	488	14	43,885	3,135	5	1,758	352
Chenango	2,002	1,038,799	519	15	42,287	2,819	10	8,437	844
Clinton	5,078	2,753,500	542	20	61,463	3,073	31	12,546	405
Columbia	1,107	580,130	524	7	23,746	3,392	0	0	0
Cortland	1,021	446,290	437	5	19,227	3,845	10	5,958	596
Delaware	1,950	1,019,535	523	5	20,839	4,168	10	3,952	395
Dutchess	2,260	1,119,410	495	4	15,710	3,928	19	51,860	2,729
Erie	27,766	6,199,885	223	80	232,058	2,901	32	18,143	567
Essex	892	479,910	538	0	0	0	8	3,902	488
Franklin	3,458	1,888,305	546	2	7,300	3,650	5	2,295	459
Fulton	2,234	1,148,640	514	10	27,490	2,749	20	7,633	382
Genesee	624	224,635	360	0	0	0	1	482	482
Greene	1,705	893,290	524	4	16,769	4,192	5	4,409	882
Hamilton	115	62,370	542	0	0	0	0	0	0
Herkimer	2,232	1,161,050	520	13	38,092	2,930	7	9,428	1,347
Jefferson	2,435	1,227,644	504	8	30,655	3,832	4	1,167	292
Lewis	1,273	678,320	533	2	4,750	2,375	5	1,849	370
Livingston	1,183	535,175	452	13	29,859	2,297	5	850	170
Madison	1,885	980,110	520	20	41,773	2,089	10	4,057	406
Monroe	5,436	2,578,800	474	28	76,407	2,729	8	2,430	304
Montgomery	1,709	877,240	513	5	18,924	3,785	10	2,950	295
Nassau	1,458	646,260	443	8	43,765	5,471	2	923	462
Niagara	3,397	1,056,975	311	27	88,505	3,278	44	14,947	340
Oneida	6,455	3,308,160	512	34	88,931	2,616	13	9,403	723
Onondaga	3,357	1,574,305	469	21	67,041	3,192	31	15,352	495
Ontario	1,004	434,250	433	13	43,786	3,368	4	2,632	658
Orange	3,304	1,577,470	477	26	120,199	4,623	6	4,725	787
Orleans	1,081	446,435	413	18	63,812	3,545	2	999	500
Oswego	2,468	1,274,970	517	7	20,956	2,994	10	4,822	482
Otsego	2,142	1,136,310	530	14	43,060	3,076	3	734	245
Putnam	256	123,965	484	1	5,350	5,350	3	916	305
Rensselaer	1,700	858,580	505	10	36,640	3,664	2	2,685	1,342
Rockland	1,568	764,425	488	2	8,040	4,020	4	1,363	341
St. Lawrence	5,547	2,595,045	468	25	85,338	3,414	62	21,695	350
Saratoga	3,509	1,789,025	510	31	92,713	2,991	20	6,901	345
Schenectady	1,061	483,900	456	7	23,477	3,354	8	5,803	725
Schoharie	1,340	710,705	530	6	23,927	3,988	3	1,140	380
Schuyler	819	423,285	517	17	58,430	3,437	2	812	406
Seneca	551	269,599	489	7	22,600	3,229	10	8,358	836
Steuben	2,870	1,168,290	407	24	59,116	2,463	17	19,111	1,124
Suffolk	9,162	4,283,360	468	24	110,893	4,621	32	25,326	791
Sullivan	2,641	1,381,735	523	4	11,074	2,768	4	2,316	579
Tioga	1,699	875,875	516	6	20,450	3,408	4	9,569	2,392
Tompkins	1,044	508,670	487	4	15,350	3,838	9	2,492	277
Ulster	5,103	2,585,564	507	14	51,925	3,709	7	4,252	607
Warren	1,584	807,045	509	9	30,346	3,372	3	2,275	758
Washington	1,784	922,335	517	12	41,765	3,480	12	9,753	813
Wayne	1,066	527,835	495	8	27,177	3,397	6	1,385	231
Westchester	475	247,438	521	5	26,420	5,284	1	696	696
Wyoming	435	166,535	383	4	14,848	3,712	0	0	0
Yates	585	278,725	476	6	20,973	3,496	11	3,598	327

* Please Note: The 2015 Home Energy Assistance Program Federal Fiscal Year is October 1, 2014 through September 30, 2015.

Table 28
FEDERAL ALL FAMILIES WORK PARTICIPATION RATES
TANF, Safety Net Assistance MOE and Combined TANF and Safety Net Assistance MOE
July 2015

Local District	Combined TANF and Safety Net Assistance MOE			TANF			Safety Net Assistance MOE		
	Rate	Numerator	Denominator	Rate	Numerator	Denominator	Rate	Numerator	Denominator
New York State*	29.1%	26,730	91,875	29.2%	17,023	58,515	29.0%	9,708	33,360
New York City*	31.6%	17,564	55,323	32.2%	10,597	33,072	31.4%	6,966	22,252
Rest of State	23.2%	7,608	32,816	21.7%	4,893	22,514	26.4%	2,715	10,302
Albany	15.1%	136	898	15.0%	91	606	15.4%	45	292
Allegany	24.4%	32	131	27.7%	28	101	13.3%	4	30
Broome	16.8%	167	995	14.6%	99	676	21.3%	68	319
Cattaraugus	27.7%	33	119	30.0%	30	100	15.8%	3	19
Cayuga	10.7%	28	261	10.0%	22	220	14.6%	6	41
Chautauqua	19.3%	170	881	18.6%	106	571	20.6%	64	310
Chemung	13.9%	19	137	13.6%	15	110	14.8%	4	27
Chenango	15.1%	13	86	12.8%	10	78	37.5%	3	8
Clinton	19.7%	31	157	21.0%	25	119	15.8%	6	38
Columbia	13.7%	18	131	15.4%	16	104	7.4%	2	27
Cortland	19.1%	29	152	21.1%	27	128	8.3%	2	24
Delaware	20.0%	9	45	20.9%	9	43	0.0%	0	2
Dutchess	13.6%	35	258	11.0%	19	173	18.8%	16	85
Erie	38.2%	1,851	4,840	35.7%	1,180	3,304	43.7%	671	1,536
Essex	0.0%	0	19	0.0%	0	16	0.0%	0	3
Franklin	19.0%	27	142	19.3%	21	109	18.2%	6	33
Fulton	21.4%	12	56	20.4%	11	54	50.0%	1	2
Genesee	25.7%	19	74	24.2%	15	62	33.3%	4	12
Greene	38.8%	38	98	38.6%	27	70	39.3%	11	28
Hamilton	0.0%	0	4	0.0%	0	4	N/A	0	0
Herkimer	9.9%	12	121	10.4%	10	96	8.0%	2	25
Jefferson	11.6%	28	241	10.9%	22	201	15.0%	6	40
Lewis	16.7%	3	18	11.8%	2	17	100.0%	1	1
Livingston	9.5%	24	253	7.2%	15	207	19.6%	9	46
Madison	16.0%	16	100	15.0%	12	80	20.0%	4	20
Monroe	19.5%	1,093	5,606	17.9%	634	3,542	22.2%	459	2,064
Montgomery	21.3%	42	197	22.9%	38	166	12.9%	4	31
Nassau	29.7%	590	1,989	29.3%	364	1,244	30.3%	226	745
Niagara	15.0%	143	952	13.3%	89	671	19.2%	54	281
Oneida	21.6%	340	1,572	20.5%	233	1,137	24.6%	107	435
Onondaga	11.9%	281	2,353	10.7%	182	1,699	15.1%	99	654
Ontario	21.0%	38	181	18.9%	27	143	28.9%	11	38
Orange	27.1%	237	875	25.2%	133	528	30.0%	104	347
Orleans	19.6%	30	153	19.8%	21	106	19.1%	9	47
Oswego	12.5%	70	559	14.4%	67	466	3.2%	3	93
Otsego	35.0%	7	20	35.0%	7	20	N/A	0	0
Putnam	0.0%	0	8	0.0%	0	7	0.0%	0	1
Rensselaer	23.2%	185	796	22.7%	129	568	24.6%	56	228
Rockland	27.7%	71	256	29.6%	55	186	22.9%	16	70
St. Lawrence	24.5%	84	343	23.8%	63	265	26.9%	21	78
Saratoga	11.8%	4	34	12.1%	4	33	0.0%	0	1
Schenectady	18.5%	119	644	18.8%	81	432	17.9%	38	212
Schoharie	20.0%	8	40	21.6%	8	37	0.0%	0	3
Schuyler	4.7%	3	64	3.8%	2	53	9.1%	1	11
Seneca	16.9%	14	83	15.9%	10	63	20.0%	4	20
Steuben	21.9%	54	247	21.5%	38	177	22.9%	16	70
Suffolk	34.7%	785	2,264	31.3%	484	1,544	41.8%	301	720
Sullivan	20.2%	35	173	17.9%	22	123	26.0%	13	50
Tioga	20.0%	12	60	19.6%	11	56	25.0%	1	4
Tompkins	18.6%	34	183	16.3%	22	135	25.0%	12	48
Ulster	12.3%	71	575	11.9%	51	427	13.5%	20	148
Warren	7.9%	3	38	5.6%	2	36	50.0%	1	2
Washington	25.0%	13	52	24.0%	12	50	50.0%	1	2
Wayne	11.3%	17	150	11.3%	15	133	11.8%	2	17
Westchester	22.3%	463	2,073	22.8%	266	1,165	21.7%	197	908
Wyoming	24.4%	10	41	24.3%	9	37	25.0%	1	4
Yates	11.1%	2	18	12.5%	2	16	0.0%	0	2

* Statewide and New York City participation rates are estimated from federal disaggregated reporting samples, which are the source of the rates used by the United States Department of Health and Human Services to determine if a state has met participation goals. Because the sample size is insufficient to permit rate estimates for non-New York City districts, rates for those districts are derived directly from automated systems data. Thus, Rest of State and New York City numerators and denominators will not sum to the statewide total. Estimates are from second quarter Federal Fiscal Year 2015 samples.

Table 29
WORK SANCTION STATUS BY PRESENCE IN FEDERAL ALL FAMILIES WORK PARTICIPATION CALCULATION
TANF, Safety Net Assistance MOE and Combined TANF and Safety Net Assistance MOE
July 2015

Local District	Combined TANF and Safety Net Assistance MOE		TANF		Safety Net Assistance MOE	
	Sanctioned in the Denominator	Sanctioned Removed From Denominator	Sanctioned in the Denominator	Sanctioned Removed From Denominator	Sanctioned in the Denominator	Sanctioned Removed From Denominator
New York State*	5,237	4,117	1,728	2,720	3,509	1,397
New York City*	2,693	2,648	660	1,651	2,033	997
Rest of State	2,657	1,182	1,313	784	1,344	398
Albany	60	27	24	16	36	11
Allegany	12	5	9	3	3	2
Broome	131	48	60	31	71	17
Cattaraugus	8	3	8	3	0	0
Cayuga	25	6	13	6	12	0
Chautauqua	70	40	34	22	36	18
Chemung	18	6	8	3	10	3
Chenango	3	7	1	7	2	0
Clinton	6	4	2	2	4	2
Columbia	19	12	12	11	7	1
Cortland	3	1	2	1	1	0
Delaware	2	0	2	0	0	0
Dutchess	10	10	4	9	6	1
Erie	256	181	135	123	121	58
Essex	2	0	2	0	0	0
Franklin	12	4	8	3	4	1
Fulton	2	1	2	1	0	0
Genesee	5	4	1	3	4	1
Greene	7	1	4	0	3	1
Hamilton	0	0	0	0	0	0
Herkimer	6	3	4	3	2	0
Jefferson	36	16	26	16	10	0
Lewis	2	1	1	1	1	0
Livingston	3	2	2	2	1	0
Madison	3	5	2	4	1	1
Monroe	535	221	238	131	297	90
Montgomery	13	8	11	5	2	3
Nassau	160	97	88	66	72	31
Niagara	144	55	64	37	80	18
Oneida	135	45	70	33	65	12
Onondaga	293	44	121	30	172	14
Ontario	1	9	0	9	1	0
Orange	67	34	36	16	31	18
Orleans	14	9	5	6	9	3
Oswego	33	15	21	11	12	4
Otsego	1	0	1	0	0	0
Putnam	1	1	1	1	0	0
Rensselaer	49	23	28	19	21	4
Rockland	14	8	12	5	2	3
St. Lawrence	36	23	21	18	15	5
Saratoga	0	0	0	0	0	0
Schenectady	166	40	88	30	78	10
Schoharie	5	0	4	0	1	0
Schuyler	4	1	3	1	1	0
Seneca	6	3	1	2	5	1
Steuben	4	0	1	0	3	0
Suffolk	84	47	41	23	43	24
Sullivan	12	6	6	5	6	1
Tioga	0	1	0	0	0	1
Tompkins	29	13	13	8	16	5
Ulster	59	28	34	23	25	5
Warren	0	0	0	0	0	0
Washington	4	3	4	2	0	1
Wayne	3	2	1	1	2	1
Westchester	80	57	32	30	48	27
Wyoming	3	0	1	0	2	0
Yates	1	2	1	2	0	0

* Statewide and New York City sanction rates are estimated from federal disaggregated reporting samples, which are the source of such data used by the United States Department of Health and Human Services to determine if a state has met participation goals. Because the sample size is insufficient to permit sanction estimates for non-New York City districts, data for those districts are derived directly from automated systems. Thus, Rest of State and New York City counts may not sum to the statewide total. This table uses a federal definition of sanction and includes only persons who are deemed a work eligible individual and are sanctioned for non-compliance for work or substance abuse requirements. Estimates are from second quarter Federal Fiscal Year 2015 samples.

Table 30
 TEMPORARY ASSISTANCE CASES WITH EARNED INCOME
 Cases, Average Gross Earned Income and Average Net Earned Income after Application of Disregards
 July 2015

Local District	TANF			Safety Net Assistance MOE			Safety Net Assistance Non-MOE		
	Cases	Average Gross Earned Income	Average Net Earned Income	Cases	Average Gross Earned Income	Average Net Earned Income	Cases	Average Gross Earned Income	Average Net Earned Income
New York State	15,432	\$992	\$461	11,461	\$1,017	\$465	10,418	\$1,271	\$805
New York City	10,286	1,058	498	8,594	1,041	477	7,787	1,375	915
Rest of State	5,146	861	387	2,867	945	430	2,631	962	478
Albany	122	824	365	84	900	412	73	1,213	606
Allegany	23	927	454	11	779	344	14	438	251
Broome	108	816	363	82	899	405	68	896	428
Cattaraugus	18	982	447	5	1,375	642	4	525	462
Cayuga	24	822	366	7	556	236	14	743	336
Chautauqua	118	775	343	71	844	378	60	851	417
Chemung	19	791	349	5	1,209	554	6	511	258
Chenango	13	841	376	2	861	386	12	350	171
Clinton	24	927	468	6	898	410	7	847	719
Columbia	22	700	306	2	1,151	537	17	601	308
Cortland	27	860	385	2	1,133	522	12	623	326
Delaware	7	891	401	0	0	0	6	312	137
Dutchess	36	857	383	18	1,039	493	8	804	583
Erie	639	864	386	422	976	444	559	1,136	530
Essex	3	547	228	0	0	0	2	156	105
Franklin	14	833	372	5	552	231	23	637	295
Fulton	3	905	408	1	780	345	2	561	471
Genesee	14	1,024	468	3	543	283	3	892	443
Greene	24	917	414	12	1,024	502	8	750	533
Hamilton	0	0	0	0	0	0	1	294	204
Herkimer	18	775	342	4	754	342	6	249	116
Jefferson	30	794	358	5	906	408	19	538	302
Lewis	3	812	361	1	1,296	603	2	412	243
Livingston	29	796	353	13	780	346	15	893	429
Madison	11	1,146	529	4	1,062	486	2	539	449
Monroe	692	865	388	576	948	432	265	866	426
Montgomery	39	839	374	9	1,061	531	12	1,009	538
Nassau	467	917	418	227	960	435	154	757	431
Niagara	121	777	344	86	876	402	50	695	339
Oneida	246	792	350	147	892	399	210	1,198	558
Onondaga	318	821	365	188	968	443	242	1,154	549
Ontario	38	796	353	12	1,090	501	11	910	625
Orange	165	941	429	134	927	419	64	991	472
Orleans	11	948	429	8	735	322	11	736	355
Oswego	76	735	323	15	812	361	37	841	393
Otsego	6	1,030	470	0	0	0	5	341	168
Putnam	9	870	390	0	0	0	4	994	904
Rensselaer	125	756	334	77	803	366	48	977	475
Rockland	150	932	414	20	949	416	59	1,120	553
St. Lawrence	59	649	280	23	616	265	46	581	261
Saratoga	6	1,023	468	0	0	0	5	123	36
Schenectady	109	879	395	53	969	441	40	1,027	539
Schoharie	12	701	307	0	0	0	5	553	361
Schuyler	13	540	226	3	949	433	9	633	281
Seneca	16	703	306	6	1,174	542	5	694	336
Steuben	40	729	320	20	802	359	20	499	235
Suffolk	474	986	460	277	1,074	494	191	1,017	587
Sullivan	42	697	304	14	1,014	462	13	856	433
Tioga	8	945	428	1	964	437	2	457	382
Tompkins	27	796	322	18	762	334	24	619	325
Ulster	114	778	346	33	807	361	61	751	377
Warren	6	894	402	0	0	0	1	637	273
Washington	9	808	359	1	1,063	487	6	1,350	700
Wayne	12	662	286	1	780	690	10	446	252
Westchester	378	894	405	152	965	438	73	779	421
Wyoming	6	546	228	1	988	449	3	708	359
Yates	3	1,174	542	0	0	0	2	432	149