



# **2025 Statistical Report On the Operations of New York State Public Assistance Programs**

Prepared By:  
New York State Office of Temporary and Disability Assistance  
Bureau of Data Management and Analysis

This page intentionally left blank

# 2025 Statistical Report on the Operations of New York State Public Assistance Programs

## Table of Contents

<b>Introduction</b>	<b>1</b>
<b>Recent Public Assistance Recipient Trends</b>	<b>2</b>
<b>Report Summary</b>	<b>4</b>
<b>Data Tables</b>	
<b><u>Section (a) Applications</u></b>	<b>11</b>
Table 1: Applications Approved - Total Public Assistance, Family Assistance and Safety Net Assistance Programs	
Table 2: Application Denials and Reasons for Denial - Total Public Assistance	
Table 3: Application Denials and Reasons for Denial - Family Assistance Program	
Table 4: Application Denials and Reasons for Denial - Safety Net Assistance Program	
<b><u>Section (b) Case Closings and Transfers</u></b>	<b>17</b>
Table 5: Case Closings by Reason - Total Public Assistance	
Table 6: Case Closings by Reason - Family Assistance Program	
Table 7: Case Closings by Reason - Safety Net Assistance Program	
Table 8: Cases Transferred between Public Assistance Programs	
<b><u>Section (c) Subsidized Work Activities</u></b>	<b>23</b>
Table 9: Monthly Average Number of Recipients Participating in Subsidized Work Activities by Type of Activity and Average Weekly Hours in all Activities - Temporary Assistance for Needy Families	
Table 10: Monthly Average Number of Recipients Participating in Subsidized Work Activities by Type of Activity and Average Weekly Hours in all Activities - Safety Net MOE	
Table 11: Monthly Average Number of Recipients Participating in Subsidized Work Activities by Type of Activity and Average Weekly Hours in all Activities - Safety Net Non-MOE	
Table 12: Monthly Average Number of Recipients Receiving an Exemption from Participating in Work Activities - Temporary Assistance for Needy Families	
Table 13: Monthly Average Number of Recipients Receiving an Exemption from Participating in Work Activities - Safety Net MOE	
Table 14: Monthly Average Number of Recipients Receiving an Exemption from Participating in Work Activities - Safety Net Non-MOE	
Table 15: Consecutive Number of Months in Work Limited Status - Total Public Assistance	
Table 16: Consecutive Number of Months in Work Limited Status by Case Category	
Table 17: Average Number of Children Receiving Subsidized Child Care Funded under the NYS Child Care Block Grant	
Table 18: Expenditures in Support of Work Activities	
Section (c) Footnotes	

**Section (d) Unsubsidized Work Activities****35**

Table 19: Monthly Average Number of Recipients Participating in Unsubsidized Employment and Average Weekly Hours

Section (d) Footnotes

**Section (e) Training and Educational Activities****39**

Table 20: Monthly Average Number of Recipients Participating in Training and Education by Type of Activity and Average Weekly Hours in all Activities - Temporary Assistance for Needy Families

Table 21: Monthly Average Number of Recipients Participating in Training and Education by Type of Activity and Average Weekly Hours in all Activities - Safety Net MOE

Table 22: Monthly Average Number of Recipients Participating in Training and Education by Type of Activity and Average Weekly Hours in all Activities - Safety Net Non-MOE

Section (e) Footnotes

**Section (f) Sanctions****45**

Table 23: Monthly Average Number of Recipients in Sanction Status - Total Public Assistance

Table 24: Monthly Average Number of Recipients in Sanction Status - Temporary Assistance for Needy Families

Table 25: Monthly Average Number of Recipients in Sanction Status - Safety Net MOE

Table 26: Monthly Average Number of Recipients in Sanction Status - Safety Net Non-MOE

Table 27: Monthly Average Number of Sanctioned Recipients Complying and the Average Number of Days until Compliance - Total Public Assistance

Table 28: Monthly Average Number of Sanctioned Recipients Complying and the Average Number of Days until Compliance - Temporary Assistance for Needy Families

Table 29: Monthly Average Number of Sanctioned Recipients Complying and the Average Number of Days until Compliance - Safety Net MOE

Table 30: Monthly Average Number of Sanctioned Recipients Complying and the Average Number of Days until Compliance - Safety Net Non-MOE

Table 31: Administrative Hearings - Hearings Requested - Total Public Assistance

Table 32: Administrative Hearings - Hearings Held - Total Public Assistance

Table 33: Administrative Hearings - Issues Affirmed - Total Public Assistance

Table 34: Administrative Hearings - Issues Reversed - Total Public Assistance

Table 35: Administrative Hearings - Issues Withdrawn - Total Public Assistance

Table 36: Administrative Hearings - Agency Correct When Made - Total Public Assistance

Table 37: Administrative Hearings - Agency Settled - Total Public Assistance

Table 38: Administrative Hearings - Other Disposition - Total Public Assistance

Table 39: Administrative Disqualification Hearings – Eligibility Hearings Requested and Dispositions

**Section (g) Case Closings****63**

Section (g) Referral Note

**Section (h) Substance Use Disorder Programs****65**

Table 40: Monthly Average Number of Public Assistance Recipients in a Congregate Care Level II Drug/Alcohol Treatment Facility

Table 41: Number of Recipients by Length of Initial Stay in a Congregate Care Level II Drug/Alcohol Treatment Facility - Total Public Assistance

***Note: Section (i) referring to Pregnancy Prevention Programs is no longer applicable, as such programs are no longer funded through TANF.***

**Section (j) Disabled and Work Limited Recipients**

**69**

Section (j) Referral Note

***Note: Section (k) referring to the Food Assistance Program is no longer applicable.***

**Section (l) Domestic Violence**

**71**

Table 42: Domestic Violence Summary Totals - Persons Indicating Current Danger, Persons for Whom Assessments were Credible, Persons with New Waivers Granted during the Year and Persons with Waivers at Some Point During the Year

Table 43: Domestic Violence - Total Number of Active Waivers by Waiver Type

Table 44: Domestic Violence - Average Duration of Active Waivers by Waiver Type (in Months)

**Appendix A: Welfare Reform Act of 1997 Reporting Provisions**

This page intentionally left blank

# **2025 Statistical Report On the Operations of New York State Public Assistance Programs**

## **Introduction**

This report was prepared in fulfillment of the reporting requirements contained in the Welfare Reform Act of 1997 and was compiled by the Office of Temporary and Disability Assistance (OTDA) with data developed by OTDA and the Office of Children and Family Services (OCFS).<sup>1</sup> Although the law requires that this reporting should begin upon the yet-to-be-realized completion of the redesign of the Welfare Management System, we continue to report on as many of the requirements that our current data infrastructure allows.

Except where otherwise noted, the time period covered in this report is July 2024 through June 2025 (referred to as the report year). This time period was selected to allow for the compilation of a year's worth of data prior to the end of calendar year issuance date of the report.

For this 2025 report, readers should keep in mind that the economy and the public assistance program is still being impacted by the COVID-19 pandemic. Given the multifaceted nature of these effects, it would be very difficult if not impossible to estimate the impacts the pandemic had on each statistic, so no such analysis is included. Thus, caution should be used when comparing the data here to reports prior to the pandemic or assessing the absolute levels of current data, especially data related to participation in work activities.

What follows is a brief summary of current trends in the Public Assistance (PA) caseload for the July 2024 to June 2025 time period and a high-level summary of the data supplied in the main body of the report.<sup>2</sup>

---

<sup>1</sup> The reporting provisions are codified in §149, Part B of Chapter 436 of the laws of 1997. The full text of §149 is reproduced at the end of the report.

<sup>2</sup> Throughout this narrative and report, totals reported for monthly average statistics may not equal the sum of tabular entries.

## Recent Public Assistance Recipient Trends

Figure 1 illustrates the trend in total PA recipients for the July 2024 to June 2025 period. During this time, the total recipient count increased by 41,329, from 676,318 to 717,647 or 6.1%. This increase follows the 13.1% increase observed in the previous report year. Caseloads statewide have continued to increase over the course of the reporting period, primarily driven by growth in “singles” cases (cases without children) as shown in Figure 3.

**Figure 1: New York State Public Assistance Recipients  
July 2024 to June 2025**

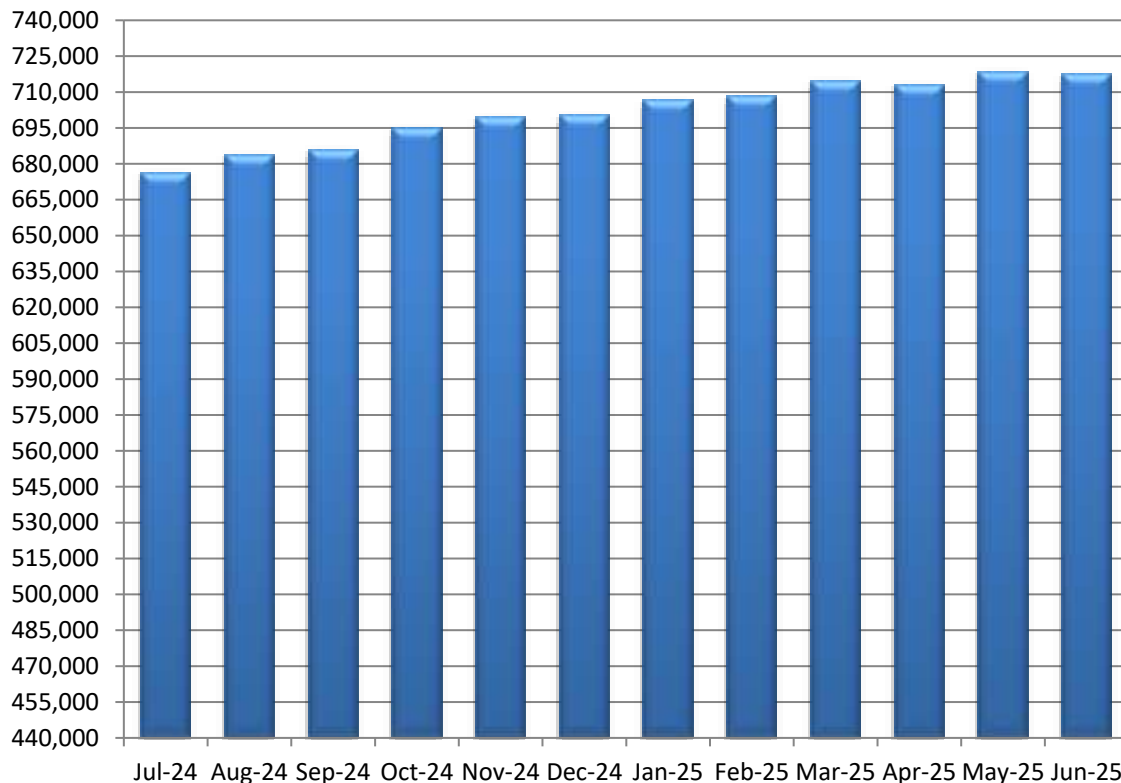


Figure 2 shows the recipient count change for the report period for “family” cases as a whole, and for each of this category’s components: 1) recipients in the Temporary Assistance for Needy Families (TANF) program (which consists of Family Assistance (FA) and a small number of federally funded Safety Net Assistance (SNA) families where an adult in the case is mandated into drug treatment), and 2) former TANF cases in the SNA program by virtue of exceeding the TANF 60 month time limit or cases that would be TANF except that they are barred from TANF participation due to their immigration status. These cases are referred to as SNA Maintenance of Effort (SNA MOE) cases because expenditures on these cases, while not TANF eligible, count toward a state’s requirement to maintain a certain level of historical assistance expenditures on families in order to access their TANF block grant funds.<sup>3</sup>

There was a 9,465 or 2.4% increase in the number of recipients in the family case category, which increased from 392,614 recipients to 402,079. This increase was almost equally shared in both the TANF and MOE categories, on both an absolute and percentage basis.

<sup>3</sup> Note that the family recipient counts include persons in non-disabled two-parent cases, even though these cases were moved into the SNA Non-Maintenance of Effort (SNA Non-MOE) case category in October 2006 for the purposes of avoiding the risk of federal penalty for failure to meet extremely high work participation rates for this group. Such cases are distributed between the TANF and SNA MOE lines on Figure 2 based on the classification the case would have been in had they not been shifted.



**Figure 2: New York State Recipients in “Family” (TANF and SNA MOE) Cases  
July 2024 to June 2025**

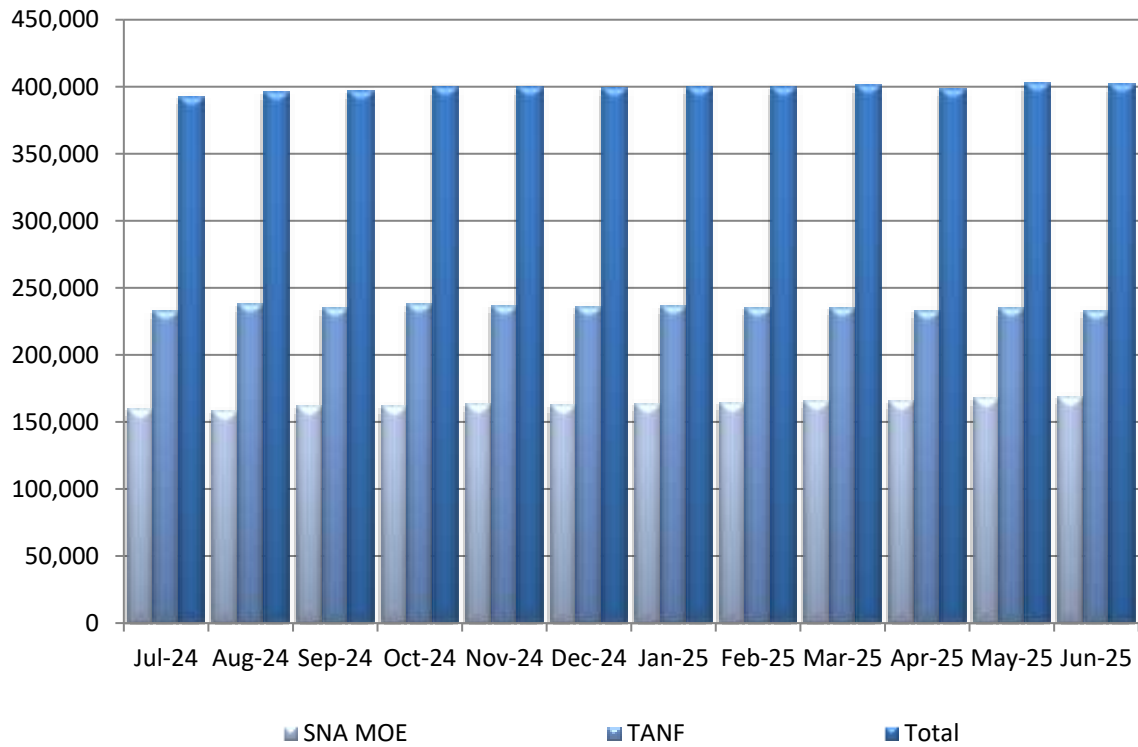
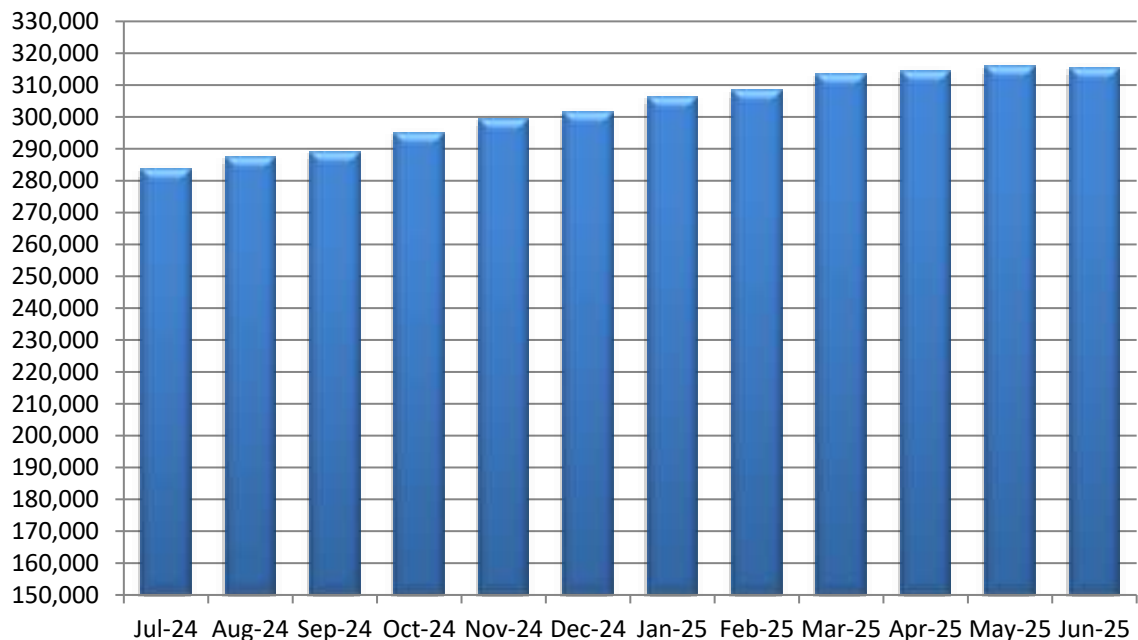


Figure 3 shows the report year trend for the recipient count for “traditional” SNA (Non-MOE) cases, usually referred to as “singles” cases since they consist primarily of one-person adult cases. There was an increase of 31,864 recipients or 11.2%, from 283,704 to 315,568 with the rate of increase slowing in the last five months of the reporting period.

**Figure 3: New York State Recipients in “Singles” (SNA Non-MOE) Cases**

**July 2024 to June 2025**



## Report Summary

This summary, and the report as a whole, is organized by section headings that refer directly by letter to the subsections of the reporting requirements in statute. In some cases, reporting requirements for a particular section overlap with those in other sections. When this occurs, appropriate cross-references will be provided in the body of the report.

### Section (a): Applications

Section (a) provides district level and statewide information on the number of case openings and denials, and the reasons for denials, for PA as a whole and for the FA and SNA categories. These numbers are summarized in Table S1.

**Table S1: Applications Approved and Denied  
July 2024 to June 2025**

<b>Public Assistance Applications</b>	<b>Application Approvals</b>	<b>Application Denials</b>
Total Public Assistance	266,981	501,918
Family Assistance	59,734	123,156
Safety Net Assistance	207,247	378,762

The main reasons for application denials were failure to comply with application requirements, such as failure to appear for interviews or failure to provide documentation (340,109 or 67.8%), or employment-related requirements (4,513 or .9%). Denials related to financial reasons (income and resources) totaled 70,122, or 14% of denials. There were 7,235 (1.4%) denials due to residence issues. Many denials (79,939 or 14.2%) fell into a miscellaneous “other” category. The denial codes in this category are not directly classifiable into the other categories. Denials in the “other” category include failure to locate the recipient, and cases where PA is denied but emergency assistance is provided.<sup>4</sup>

### Section (b): Case Closings and Transfers

Section (b) provides district level and statewide information on the number of case closings, and closing counts by reason for closing, for PA as a whole and for the FA and SNA categories. It also provides district level and statewide information on transfers between the FA and SNA case categories that occurred during the year.

Case closings totaled 287,540 for total PA, 53,452 for FA and 234,088 for SNA. Overall, the most common reasons for PA case closings were failure to comply with program requirements not related to employment (142,911 or 49.7%) such as failure to recertify, and financial reasons (56,620 or 19.7%) such as increased earnings or other income. Failure to comply with employment requirements totaled 4,607 or 1.6%. As was the case for denials, a large number of closings fell into the “other” category, mostly situations where the reason for closing was not directly classifiable into the other categories. The “other” category constituted 59,252 or 20.6% of closings. Client requests (8,757 or 3%) and residence issues (15,393 or 5.4%) rounded out the closing reasons.

Transfers from SNA to FA totaled 5,278 for the report year. Such transfers can occur for many reasons, including when an adult in an SNA case has a child, a time limited SNA case receives a time limit exemption, or an adult whose cash assistance count causes the case to be time limited leaves the household. Transfers from FA to SNA totaled 20,543. While a portion of these cases move from FA to SNA due to TANF time limits (an average of 559 TANF cases per month

---

<sup>4</sup> Note that for trending purposes, denial and closing reason categories are not directly comparable to those that pertained previous to the 2014 report. This is because in that year a review of these code classifications resulted in some reassignment of codes across categories.

reached the 60-month limit), there are other reasons these transfers occur, such as a child “aging out” of TANF eligibility and creating an adult-only case.

### **Sections (c), (d) and (e): Subsidized Work Activities, Unsubsidized Work Activities and Training and Educational Activities**

Section (c) provides data on the monthly average number of recipients participating in each subsidized or otherwise sponsored work activity exclusive of training and education activities, and the average number of hours engaged in subsidized activities per week in rest of state. Also included are data on the number of non-exempt and exempt adult recipients, with the non-exempts divided into those that are work limited and those that are not, and the exempts divided into three categories, disability/illness, substance use disorder and other (with the other category consisting primarily of caretaker situations). For those in work limited status, the duration of that status is provided. The above data is provided for each of the TANF, SNA MOE and SNA Non-MOE case types. Finally, Section (c) includes district level data on the number of persons receiving child care through the New York State Child Care Block Grant by PA status of the person, and federal and state expenditures on work activities, including Supplemental Nutrition Assistance Program Employment and Training expenditures.

Due to transition to a new reporting system during this period, New York City is unable to provide participation and hours in work activities data for Tables 9-11 in section (c).

Section (d) contains data on the number of TANF, SNA MOE and SNA Non-MOE recipients participating in unsubsidized employment and the average number of hours engaged per week, and Section (e) contains data on the number of recipients in training and education activities, and the average number of hours engaged per week in rest of state.

Due to transition to a new reporting system during this period, New York City is unable to provide participation and hours in training and educational activities for Tables 20-22 in section (d). The footnotes to these sections provide additional information about data sources in New York City and rest of state districts for work, training and education activities.

### **Summary of Section (c), (d) and (e) Data**

#### *Work Activities*

In rest of state (excluding New York City), an estimated monthly average of 893 TANF recipients, 376 SNA MOE recipients and 6,282 SNA Non-MOE recipients participated in subsidized or otherwise sponsored work activities (including subsidized public and private sector employment, on the job training, work experience, job search/job readiness training, community service, child care provider for a community service participant, substance use disorder treatment and other treatment activities).<sup>5</sup> The average hours of participation per week in rest of state in these work activities were 10, 12, and 15 for the TANF, SNA MOE and SNA Non-MOE recipients, respectively. Also, statewide (including New York City), an estimated monthly average of 21,270 TANF recipients, 13,757 SNA MOE and 15,803 SNA Non-MOE recipients participated in unsubsidized employment, with average weekly hours of 25, 24 and 21 (the latter rest of state only) for each case type respectively. For rest of state, an estimated monthly average of 322 TANF recipients, 150 SNA MOE and 353 SNA Non-MOE recipients participated in training or educational activities (including vocational education, job skills training, employment-related education and school attendance). In rest of state, the average number of hours per week participants spent in education and training activities was 11, 11, and 16 for TANF, SNA MOE cases, and SNA Non-MOE recipients, respectively.

#### *Exemptions and the Work Limited*

---

<sup>5</sup> Work activity numbers are estimates both because the TANF and SNA MOE numbers are derived from sample and because a person may participate in more than one activity.

A monthly average of 11,485 TANF, 9,284 SNA MOE and 117,133 SNA Non-MOE adults were exempt from work activities (this is exclusive of the work limited persons discussed below). This represents 16.9%, 16.2% and 40.7% of the TANF, SNA MOE and SNA Non-MOE populations, respectively. For the TANF and SNA MOE caseloads, most exemptions fell within the illness/disability category and the “other” category, the latter of which consists primarily of persons exempt because they are a caretaker of a disabled family member, with the exemptions more prevalent in the illness/disability category. Relatively few fell into the substance use disorder category. For SNA Non-MOE, most (74,429 or 63.5% of the exempt) fell into the “other” category which in the SNA Non-MOE category consists mostly of exemptions due to advanced age and those contesting their employability determination. An additional 8,148 (7.0% of the exempts) fell into the substance use disorder category. The remaining 34,555 (29.5%) fell into the illness/disability category.

In order to assess the amount of time recipients remain in work limited (as opposed to exempt) status, we examined all adults coded as work limited at the end of the report period (June 2025) and looked backwards to see the consecutive number of months they had been in that status. Of the 7,295 adult recipients classified as work limited in that month (855 in TANF 1,540 in SNA MOE and 4,900 in SNA Non-MOE), 22.6% were classified work limited for 0 to 3 months, 24.4% for 4 to 6 months, 26.0% between 7 and 12 months, and the remaining 26.9% for 13 months or more.

### *Child Care*

During the report period, a monthly average of 148,784 children received subsidized child care under the New York State Child Care Block Grant, 25,852 in PA and 122,587 in the low income category. These figures do not include child care subsidies that are distributed through several demonstration projects for students at CUNY and SUNY schools and migrant farm workers through the NYS Department of Agriculture and Markets.

### *Expenditures*

Federal, state and local expenditures in support of work activities totaled \$ 354,650,683 for the October 2023 to September 2023 period (Federal Fiscal Year 2024), including \$109,096,415 in Supplemental Nutrition Assistance Program Employment and Training funds. The Federal Fiscal Year 2024 data is used, as opposed to the report period, to coincide with required expenditure reporting periods.

## **Section (f): Sanctions**

Section (f) provides statewide and district level data on the monthly average number of recipients in sanction status, the type of sanction, the number of recipients that complied, and the average days to compliance in TANF, SNA MOE and SNA Non-MOE cases. The monthly average number of sanctioned persons for the report year was 11,959, which represents about 2.8% of the 427,785 monthly average number of adult recipients for the period. A majority (9,286 or 77.6%) of these sanctioned individuals had a child support related sanction, an additional number (1,721 or 14.4%) of these sanctioned persons had an employment-related sanction. Each month, an average of 271 persons complied with requirements and ended their sanction. The average length of time to compliance for these persons was 242 days. Note that litigation, law changes and the COVID-19 pandemic have had effects on sanction activity, most notably in New York City. Comparisons to previous reports should be made with those changes in mind.

Section (f) also provides district level and statewide data on the number of sanction-related and work activity-related (the two overlap) fair hearings requested, the number of hearings held, and the outcomes of these hearings, for the full report year.<sup>6</sup> Readers of this section should note that

---

<sup>6</sup> Fair hearing outcomes described in the report are affirmance (i.e., the agency's determination is deemed correct), reversal (i.e., the agency's determination is incorrect), agency withdrawal (the agency decides not to proceed with the proposed action), correct when made (the agency was correct at the time the decision was made, but changes in circumstances require agency action in favor of the appellant) settlement (issues

the numbers reported are based on issues addressed, not hearings per se: more than one issue can be addressed at a hearing, and separate issues addressed at the same hearing can have different outcomes.<sup>7</sup>

For the purposes of economy of presentation, Section (f) also contains fair hearings data on work-related issues, since these overlap with sanction-related hearings and follow a similar format. Also included in this section are data on the number and outcomes of administrative disqualification hearings, i.e., hearings initiated by districts.

Due to the large number of tables in the fair hearings section, they will not be summarized here. Readers should note, however, that outcome numbers will not sum exactly to hearing numbers since some issues initiated during the report year may still have been pending at the end of the report year, and issues from the previous year may have been resolved in the current year.

### **Section (g): Case Closings**

All data available to meet the case closings requirements of this section were presented in Sections (b) and (c). We no longer present data on transitional Medicaid receipt because some follow-up data is no longer on WMS (our report source) due to changes to the Medicaid program brought on by the Affordable Care Act and the institution of New York's health care exchange.

### **Section (h): Substance Use Disorder Treatment Programs**

Section (h) provides the monthly average number of PA persons residing in Congregate Care Level II drug and alcohol treatment facilities during the report period. This information is provided at the district level and by TANF, SNA MOE and SNA Non-MOE case type. For the report year, the monthly average number of persons receiving treatment in these facilities was 4,352, with most (4,290 or 98.6%) in the SNA Non-MOE program.

Section (h) also contains data on the duration of spells in these facilities, for persons entering in the period from July to December 2024. For the 3,320 entrants during this period, 9.1% had a spell of one month or less, 9.7% two months, 10.3% three months, 9.5% four months, 8.5% five months and 52.8% six months or more.

### **Section (i): Pregnancy Prevention Programs**

TANF funding for pregnancy prevention programs was discontinued, so those programs are no longer included in this report. Data for non-TANF pregnancy prevention programs can be obtained from the Department of Health.

### **Section (j): Disabled and Work Limited Recipients**

All data available to meet the requirements of this section were reported in Section (c) above.

### **Section (k): Food Assistance Program**

The Food Assistance Program was not active during the reporting period.

### **Section (l): Domestic Violence**

Section (l) reports district level and statewide data for the report year on the number of persons indicating a current danger on their domestic violence screening form, the number of persons whose domestic violence assessments showed a credible threat, the number of persons with new

---

are resolved prior to the scheduling of the hearing or prior to the scheduled date of the hearing) and a catch-all other category.

<sup>7</sup> In previous reports, fair hearings tables included a breakout by Family Assistance and Safety Net Assistance. Starting with the 2018 report only total PA tables are included, to consolidate report tables with few entries.

domestic violence waivers granted during the year, and the number of persons with an active waiver at some point during the year. Also reported is the number of active waivers broken down by the program requirements that are waived (e.g., time limits, employment, child support, etc.), as well as the average duration of waivers by waiver type.

For the reporting period 11,281 persons checked that there was a current domestic violence danger to them on the screening form. During the same period, 7,985 persons underwent a full domestic violence assessment where a credible threat was confirmed, and 7,875 persons were granted waivers.<sup>8</sup> During the report, period 9,787 persons had active domestic violence waivers at some point during the year, including persons whose waivers were granted previous to the report year. These persons had a total of 17,760 active waivers during the report year. The number of waivers exceeds the number of persons with waivers because waivers are specific to the requirement for which the waiver is granted, not a blanket exception from all program requirements. That is, a single domestic violence victim can have more than one waiver. For example, if the person is exempted from both child support and work requirements, they will have two waivers. Note also that the number of active waivers for the year, like the number of persons with active waivers, includes those carried over from previous years.

Most domestic violence waivers were granted either from the requirement to cooperate in the establishment of child support (13,961), or from the requirement to participate in employment activities (3,312). Waivers active during the period averaged five months in duration.

Amendments to SSL 349-a(5) enacted in 2025 changed Public Assistance policy for victims of domestic violence. Starting in February 2026, domestic violence assessments will no longer include assessing the credibility of the allegation of abuse and will focus solely on determining what program waivers, if any, the self-attested domestic violence victim needs. The 2026 Report on Public Assistance will reflect those changes.

---

<sup>8</sup> Note that the percentage of domestic violence interviews that result in a credible threat cannot be determined by taking the ratio of interviews that result in a credible threat to the number of persons indicating a current danger. This is because some of the difference between the number indicating a threat and the number where a credible threat was found is due to the client electing not to proceed to the interview stage.

## Data Tables

This page intentionally left blank



***Section (a)***

***Applications***

- Applications approved
- Application denials and reasons for denial

**Table 1: Applications Approved**  
**Total Public Assistance, Family Assistance and Safety Net Assistance Programs**  
**July 2024 - June 2025**

Local District	Total Public Assistance Approved	Family Assistance	Safety Net Assistance
New York State	266,981	59,734	207,247
New York City	197,395	40,236	157,159
Rest of State	69,586	19,498	50,088
Albany	2,436	695	1,741
Allegany	196	62	134
Broome	3,561	858	2,703
Cattaraugus	973	207	766
Cayuga	727	152	575
Chautauqua	2,104	613	1,491
Chemung	936	240	696
Chenango	282	90	192
Clinton	1,085	294	791
Columbia	320	70	250
Cortland	452	101	351
Delaware	109	39	70
Dutchess	1,168	297	871
Erie	7,518	2,454	5,064
Essex	56	16	40
Franklin	499	100	399
Fulton	502	170	332
Genesee	237	31	206
Greene	306	97	209
Hamilton	10	4	6
Herkimer	405	84	321
Jefferson	906	156	750
Lewis	88	22	66
Livingston	334	93	241
Madison	156	34	122
Monroe	5,391	1,933	3,458
Montgomery	282	123	159
Nassau	3,100	671	2,429
Niagara	1,886	532	1,354
Oneida	1,134	341	793
Onondaga	5,004	1,583	3,421
Ontario	977	217	760
Orange	1,825	567	1,258
Orleans	514	127	387
Oswego	1,369	374	995
Otsego	181	28	153
Putnam	73	22	51
Rensselaer	1,150	444	706
Rockland	722	179	543
St. Lawrence	890	253	637
Saratoga	210	54	156
Schenectady	1,713	662	1,051
Schoharie	81	26	55
Schuyler	91	25	66
Seneca	226	57	169
Steuben	980	220	760
Suffolk	9,644	2,214	7,430
Sullivan	628	156	472
Tioga	257	70	187
Tompkins	670	152	518
Ulster	823	191	632
Warren	600	156	444
Washington	308	99	209
Wayne	324	71	253
Westchester	2,932	905	2,027
Wyoming	104	31	73
Yates	131	36	95

**Table 2: Application Denials and Reasons for Denial**

**Total Public Assistance**

**July 2024 - June 2025**

Local District	Total Denials	Financial Reasons	Residence Issues	Compliance Issues		Other
				Employment	Other	
New York State	501,918	70,122	7,235	4,513	340,109	79,939
New York City	366,577	47,289	642	152	260,865	57,629
Rest of State	135,341	22,833	6,593	4,361	79,244	22,310
Albany	4,136	365	289	84	2,346	1,052
Allegany	466	43	16	73	278	56
Broome	4,849	774	260	12	2,354	1,449
Cattaraugus	1,027	95	126	9	675	122
Cayuga	638	51	46	49	432	60
Chautauqua	2,559	302	72	246	1,393	546
Chemung	1,895	55	30	224	970	616
Chenango	681	38	15	13	612	3
Clinton	987	18	61	3	523	382
Columbia	663	66	69	52	266	210
Cortland	713	21	21	62	578	31
Delaware	379	37	8	25	245	64
Dutchess	4,314	1,047	299	58	1,731	1,179
Erie	11,156	1,190	142	163	9,530	131
Essex	222	10	8	20	157	27
Franklin	606	42	141	86	237	100
Fulton	593	15	23	46	376	133
Genesee	588	48	56	73	375	36
Greene	279	91	21	33	110	24
Hamilton	7	2	0	0	4	1
Herkimer	708	155	36	33	396	88
Jefferson	2,715	466	83	154	1,645	367
Lewis	232	57	25	14	115	21
Livingston	740	33	75	25	419	188
Madison	319	9	23	26	252	9
Monroe	23,959	4,250	183	25	17,445	2,056
Montgomery	1,073	104	35	205	387	342
Nassau	7,228	1,784	1,118	423	2,338	1,565
Niagara	5,188	395	82	71	3,337	1,303
Oneida	5,399	771	287	143	3,291	907
Onondaga	7,867	2,325	221	39	4,379	903
Ontario	1,125	63	166	114	712	70
Orange	3,392	935	426	104	1,272	655
Orleans	450	28	12	47	240	123
Oswego	1,591	58	67	76	1,149	241
Otsego	598	51	47	69	417	14
Putnam	159	23	6	21	84	25
Rensselaer	2,251	398	199	236	1,413	5
Rockland	1,299	202	47	3	900	147
St. Lawrence	1,000	67	82	48	663	140
Saratoga	1,713	59	29	154	1,329	142
Schenectady	2,501	225	52	212	1,370	642
Schoharie	321	10	3	28	123	157
Schuyler	233	4	4	17	115	93
Seneca	332	39	80	60	125	28
Steuben	1,266	109	193	162	550	252
Suffolk	8,578	3,930	348	50	3,019	1,231
Sullivan	1,330	77	157	113	778	205
Tioga	344	11	19	24	287	3
Tompkins	1,429	100	96	44	1,127	62
Ulster	1,698	165	211	1	1,099	222
Warren	688	152	99	64	358	15
Washington	985	52	73	103	619	138
Wayne	655	42	94	37	447	35
Westchester	8,875	1,339	192	28	3,649	3,667
Wyoming	150	7	11	17	105	10
Yates	192	28	9	40	98	17

**Table 3: Application Denials and Reasons for Denial  
Family Assistance Program  
July 2024 - June 2025**

Local District	Total Denials	Financial Reasons	Residence Issues	Compliance Issues		Other
				Employment	Other	
New York State	123,156	25,058	1,053	1,381	88,128	7,536
New York City	81,146	15,145	91	26	61,274	4,610
Rest of State	42,010	9,913	962	1,355	26,854	2,926
Albany	1,096	152	62	3	850	29
Allegany	148	12	3	21	109	3
Broome	1,338	310	46	1	747	234
Cattaraugus	172	39	10	0	123	0
Cayuga	190	21	3	18	143	5
Chautauqua	621	99	17	75	391	39
Chemung	521	22	3	79	263	154
Chenango	174	5	3	4	161	1
Clinton	273	3	8	0	126	136
Columbia	235	27	9	18	94	87
Cortland	148	8	4	10	125	1
Delaware	157	19	3	13	121	1
Dutchess	1,508	315	37	19	607	530
Erie	4,015	605	32	5	3,355	18
Essex	76	2	0	8	61	5
Franklin	133	15	2	25	79	12
Fulton	182	7	6	17	152	0
Genesee	190	18	7	19	141	5
Greene	116	43	4	11	49	9
Hamilton	5	2	0	0	3	0
Herkimer	172	73	5	2	84	8
Jefferson	688	203	12	50	412	11
Lewis	53	13	6	0	32	2
Livingston	247	11	15	9	163	49
Madison	112	5	5	10	92	0
Monroe	8,214	2,028	20	2	6,116	48
Montgomery	323	54	14	83	170	2
Nassau	1,882	830	190	188	493	181
Niagara	1,319	153	13	2	1,118	33
Oneida	1,446	403	22	6	898	117
Onondaga	2,639	1,092	26	1	1,393	127
Ontario	286	23	5	40	212	6
Orange	1,566	481	50	63	599	373
Orleans	100	14	4	10	62	10
Oswego	745	31	15	28	615	56
Otsego	132	7	3	6	113	3
Putnam	66	12	1	11	38	4
Rensselaer	1,171	191	57	116	802	5
Rockland	511	90	8	0	370	43
St. Lawrence	316	26	5	15	220	50
Saratoga	510	11	4	37	431	27
Schenectady	850	139	9	86	573	43
Schoharie	64	6	0	7	38	13
Schuyler	75	3	1	2	42	27
Seneca	109	13	12	26	57	1
Steuben	323	47	8	49	190	29
Suffolk	2,461	1,431	45	0	927	58
Sullivan	475	35	15	46	308	71
Tioga	162	3	5	15	138	1
Tompkins	274	34	6	1	232	1
Ulster	484	62	31	0	297	94
Warren	227	63	6	29	126	3
Washington	320	13	16	38	214	39
Wayne	184	11	8	10	152	3
Westchester	2,101	565	59	4	1,355	118
Wyoming	57	3	1	5	48	0
Yates	48	10	1	12	24	1

**Table 4: Application Denials and Reasons for Denial  
Safety Net Assistance Program  
July 2024 - June 2025**

Local District	Total Denials	Financial Reasons	Residence Issues	Compliance Issues		Other
				Employment	Other	
New York State	378,762	45,064	6,182	3,132	251,981	72,403
New York City	285,431	32,144	551	126	199,591	53,019
Rest of State	93,331	12,920	5,631	3,006	52,390	19,384
Albany	3,040	213	227	81	1,496	1,023
Allegany	318	31	13	52	169	53
Broome	3,511	464	214	11	1,607	1,215
Cattaraugus	855	56	116	9	552	122
Cayuga	448	30	43	31	289	55
Chautauqua	1,938	203	55	171	1,002	507
Chemung	1,374	33	27	145	707	462
Chenango	507	33	12	9	451	2
Clinton	714	15	53	3	397	246
Columbia	428	39	60	34	172	123
Cortland	565	13	17	52	453	30
Delaware	222	18	5	12	124	63
Dutchess	2,806	732	262	39	1,124	649
Erie	7,141	585	110	158	6,175	113
Essex	146	8	8	12	96	22
Franklin	473	27	139	61	158	88
Fulton	411	8	17	29	224	133
Genesee	398	30	49	54	234	31
Greene	163	48	17	22	61	15
Hamilton	2	0	0	0	1	1
Herkimer	536	82	31	31	312	80
Jefferson	2,027	263	71	104	1,233	356
Lewis	179	44	19	14	83	19
Livingston	493	22	60	16	256	139
Madison	207	4	18	16	160	9
Monroe	15,745	2,222	163	23	11,329	2,008
Montgomery	750	50	21	122	217	340
Nassau	5,346	954	928	235	1,845	1,384
Niagara	3,869	242	69	69	2,219	1,270
Oneida	3,953	368	265	137	2,393	790
Onondaga	5,228	1,233	195	38	2,986	776
Ontario	839	40	161	74	500	64
Orange	1,826	454	376	41	673	282
Orleans	350	14	8	37	178	113
Oswego	846	27	52	48	534	185
Otsego	466	44	44	63	304	11
Putnam	93	11	5	10	46	21
Rensselaer	1,080	207	142	120	611	0
Rockland	788	112	39	3	530	104
St. Lawrence	684	41	77	33	443	90
Saratoga	1,203	48	25	117	898	115
Schenectady	1,651	86	43	126	797	599
Schoharie	257	4	3	21	85	144
Schuyler	158	1	3	15	73	66
Seneca	223	26	68	34	68	27
Steuben	943	62	185	113	360	223
Suffolk	6,117	2,499	303	50	2,092	1,173
Sullivan	855	42	142	67	470	134
Tioga	182	8	14	9	149	2
Tompkins	1,155	66	90	43	895	61
Ulster	1,214	103	180	1	802	128
Warren	461	89	93	35	232	12
Washington	665	39	57	65	405	99
Wayne	471	31	86	27	295	32
Westchester	6,774	774	133	24	2,294	3,549
Wyoming	93	4	10	12	57	10
Yates	144	18	8	28	74	16

This page intentionally left blank

***Section (b)***

## ***Case Closings and Transfers***

- Case closings by reason for closing
- Cases transferred between programs

**Table 5: Case Closings by Reason**

**Total Public Assistance**

**July 2024 - June 2025**

Local District	Total Closings	Client Request	Financial Issues	Residence Issues	Compliance Issues		Other
					Employment	Other	
New York State	287,540	8,757	56,620	15,393	4,607	142,911	59,252
New York City	204,592	3,745	43,827	5,691	239	94,337	56,753
Rest of State	82,948	5,012	12,793	9,702	4,368	48,574	2,499
Albany	2,946	96	439	478	125	1,749	59
Allegany	227	31	46	27	12	96	15
Broome	4,163	197	400	520	47	2,919	80
Cattaraugus	1,036	51	146	112	37	662	28
Cayuga	846	77	177	81	139	318	54
Chautauqua	2,479	156	390	284	129	1,453	67
Chemung	1,064	46	134	114	107	528	135
Chenango	338	47	53	30	2	201	5
Clinton	1,172	110	154	82	32	703	91
Columbia	363	28	58	83	12	175	7
Cortland	501	45	94	48	27	268	19
Delaware	109	8	32	8	2	57	2
Dutchess	1,339	49	187	169	58	835	41
Erie	8,575	1,019	1,307	534	757	4,739	219
Essex	85	12	17	11	8	37	0
Franklin	570	48	110	67	79	242	24
Fulton	541	51	100	66	53	258	13
Genesee	303	17	73	28	25	151	9
Greene	346	17	68	46	42	156	17
Hamilton	14	1	4	4	0	3	2
Herkimer	490	58	49	48	44	275	16
Jefferson	1,189	76	124	81	131	738	39
Lewis	89	11	18	11	6	35	8
Livingston	446	34	77	75	13	241	6
Madison	232	16	43	17	11	143	2
Monroe	7,246	204	1,327	293	25	5,254	143
Montgomery	334	22	81	36	22	159	14
Nassau	3,771	248	654	976	205	1,568	120
Niagara	2,207	129	324	125	102	1,439	88
Oneida	1,435	72	302	234	73	706	48
Onondaga	6,034	230	1,063	455	119	3,973	194
Ontario	1,033	83	211	173	94	456	16
Orange	1,934	116	322	547	55	862	32
Orleans	573	33	143	49	54	267	27
Oswego	1,668	124	175	186	114	905	164
Otsego	203	18	50	36	10	84	5
Putnam	83	11	10	11	7	41	3
Rensselaer	1,317	48	196	201	181	653	38
Rockland	887	61	141	53	89	528	15
St. Lawrence	991	74	131	102	84	578	22
Saratoga	204	31	36	25	9	99	4
Schenectady	2,023	60	311	275	283	1,029	65
Schoharie	102	10	25	12	5	42	8
Schuyler	90	10	11	6	10	44	9
Seneca	263	13	51	59	33	92	15
Steuben	918	101	111	181	124	380	21
Suffolk	11,186	470	1,293	1,194	439	7,466	324
Sullivan	734	40	93	101	89	389	22
Tioga	313	27	42	56	12	172	4
Tompkins	791	36	165	29	37	509	15
Ulster	978	86	143	338	2	374	35
Warren	587	54	103	64	84	280	2
Washington	420	31	90	75	6	208	10
Wayne	455	36	86	38	16	266	13
Westchester	4,450	202	746	707	59	2,687	49
Wyoming	118	20	28	25	7	31	7
Yates	137	11	29	16	21	51	9



**Table 6: Case Closings by Reason**  
**Family Assistance Program**  
**July 2024 - June 2025**

Local District	Total Closings	Client Request	Financial Issues	Residence Issues	Compliance Issues		Other
					Employment	Other	
New York State	53,452	3,234	12,631	2,512	707	32,326	2,042
New York City	32,753	1,292	9,728	734	43	19,481	1,475
Rest of State	20,699	1,942	2,903	1,778	664	12,845	567
Albany	772	45	99	119	5	488	16
Allegany	80	16	8	8	3	39	6
Broome	917	89	97	80	2	633	16
Cattaraugus	216	25	33	22	8	122	6
Cayuga	166	47	43	12	14	48	2
Chautauqua	637	69	84	60	23	385	16
Chemung	258	25	20	16	18	157	22
Chenango	108	25	8	11	1	61	2
Clinton	278	43	28	11	4	175	17
Columbia	83	7	9	10	3	53	1
Cortland	99	23	19	7	4	39	7
Delaware	38	6	5	5	1	20	1
Dutchess	351	25	50	24	16	225	11
Erie	2,408	193	307	115	89	1,661	43
Essex	27	3	3	3	0	18	0
Franklin	98	16	18	10	7	45	2
Fulton	129	19	16	18	10	65	1
Genesee	44	7	11	1	4	19	2
Greene	87	9	17	12	5	41	3
Hamilton	7	1	1	1	0	2	2
Herkimer	121	15	10	9	4	81	2
Jefferson	202	30	11	12	11	129	9
Lewis	20	4	3	3	0	7	3
Livingston	97	14	9	16	2	53	3
Madison	58	10	4	4	0	40	0
Monroe	2,068	89	330	85	6	1,520	38
Montgomery	120	14	19	12	4	68	3
Nassau	680	99	149	120	48	240	24
Niagara	513	63	61	22	14	333	20
Oneida	416	29	70	49	16	245	7
Onondaga	1,830	102	300	108	25	1,225	70
Ontario	230	30	51	22	13	111	3
Orange	527	57	85	83	23	270	9
Orleans	129	14	34	10	11	54	6
Oswego	456	63	36	27	20	289	21
Otsego	39	7	4	3	1	23	1
Putnam	30	6	3	6	2	12	1
Rensselaer	472	21	70	54	56	257	14
Rockland	226	26	41	11	7	138	3
St. Lawrence	226	33	18	13	7	150	5
Saratoga	62	16	1	7	4	33	1
Schenectady	616	23	95	69	50	342	37
Schoharie	36	6	5	6	1	18	0
Schuyler	23	7	1	2	3	10	0
Seneca	64	7	10	13	8	23	3
Steuben	203	35	26	24	19	95	4
Suffolk	2,183	185	243	190	44	1,456	65
Sullivan	186	17	14	19	12	119	5
Tioga	80	19	5	11	0	44	1
Tompkins	161	16	26	2	4	112	1
Ulster	204	34	27	54	0	74	15
Warren	163	25	21	16	24	77	0
Washington	137	20	22	29	0	66	0
Wayne	114	17	12	12	2	68	3
Westchester	1,141	78	200	101	3	750	9
Wyoming	25	12	3	5	0	5	0
Yates	38	6	8	4	3	12	5

**Table 7: Case Closings by Reason**  
**Safety Net Assistance Program**  
**July 2024 - June 2025**

Local District	Total Closings	Client Request	Financial Issues	Residence Issues	Compliance Issues		Other
					Employment	Other	
New York State	234,088	5,523	43,989	12,881	3,900	110,585	57,210
New York City	171,839	2,453	34,099	4,957	196	74,856	55,278
Rest of State	62,249	3,070	9,890	7,924	3,704	35,729	1,932
Albany	2,174	51	340	359	120	1,261	43
Allegany	147	15	38	19	9	57	9
Broome	3,246	108	303	440	45	2,286	64
Cattaraugus	820	26	113	90	29	540	22
Cayuga	680	30	134	69	125	270	52
Chautauqua	1,842	87	306	224	106	1,068	51
Chemung	806	21	114	98	89	371	113
Chenango	230	22	45	19	1	140	3
Clinton	894	67	126	71	28	528	74
Columbia	280	21	49	73	9	122	6
Cortland	402	22	75	41	23	229	12
Delaware	71	2	27	3	1	37	1
Dutchess	988	24	137	145	42	610	30
Erie	6,167	826	1,000	419	668	3,078	176
Essex	58	9	14	8	8	19	0
Franklin	472	32	92	57	72	197	22
Fulton	412	32	84	48	43	193	12
Genesee	259	10	62	27	21	132	7
Greene	259	8	51	34	37	115	14
Hamilton	7	0	3	3	0	1	0
Herkimer	369	43	39	39	40	194	14
Jefferson	987	46	113	69	120	609	30
Lewis	69	7	15	8	6	28	5
Livingston	349	20	68	59	11	188	3
Madison	174	6	39	13	11	103	2
Monroe	5,178	115	997	208	19	3,734	105
Montgomery	214	8	62	24	18	91	11
Nassau	3,091	149	505	856	157	1,328	96
Niagara	1,694	66	263	103	88	1,106	68
Oneida	1,019	43	232	185	57	461	41
Onondaga	4,204	128	763	347	94	2,748	124
Ontario	803	53	160	151	81	345	13
Orange	1,407	59	237	464	32	592	23
Orleans	444	19	109	39	43	213	21
Oswego	1,212	61	139	159	94	616	143
Otsego	164	11	46	33	9	61	4
Putnam	53	5	7	5	5	29	2
Rensselaer	845	27	126	147	125	396	24
Rockland	661	35	100	42	82	390	12
St. Lawrence	765	41	113	89	77	428	17
Saratoga	142	15	35	18	5	66	3
Schenectady	1,407	37	216	206	233	687	28
Schoharie	66	4	20	6	4	24	8
Schuyler	67	3	10	4	7	34	9
Seneca	199	6	41	46	25	69	12
Steuben	715	66	85	157	105	285	17
Suffolk	9,003	285	1,050	1,004	395	6,010	259
Sullivan	548	23	79	82	77	270	17
Tioga	233	8	37	45	12	128	3
Tompkins	630	20	139	27	33	397	14
Ulster	774	52	116	284	2	300	20
Warren	424	29	82	48	60	203	2
Washington	283	11	68	46	6	142	10
Wayne	341	19	74	26	14	198	10
Westchester	3,309	124	546	606	56	1,937	40
Wyoming	93	8	25	20	7	26	7
Yates	99	5	21	12	18	39	4

**Table 8: Cases Transferred between  
Public Assistance Programs  
July 2024 - June 2025**

Cases Transferred from Family Assistance to Safety Net Assistance		Cases Transferred from Safety Net Assistance to Family Assistance	
New York State	20,543	New York State	5,278
New York City	17,405	New York City	3,530
Rest of State	3,138	Rest of State	1,748
Albany	97	Albany	43
Allegany	9	Allegany	16
Broome	134	Broome	79
Cattaraugus	36	Cattaraugus	27
Cayuga	41	Cayuga	31
Chautauqua	135	Chautauqua	78
Chemung	41	Chemung	27
Chenango	12	Chenango	7
Clinton	45	Clinton	22
Columbia	10	Columbia	9
Cortland	16	Cortland	15
Delaware	7	Delaware	0
Dutchess	54	Dutchess	30
Erie	318	Erie	247
Essex	2	Essex	1
Franklin	25	Franklin	22
Fulton	20	Fulton	16
Genesee	9	Genesee	6
Greene	17	Greene	5
Hamilton	0	Hamilton	1
Herkimer	17	Herkimer	13
Jefferson	20	Jefferson	12
Lewis	3	Lewis	3
Livingston	30	Livingston	10
Madison	3	Madison	1
Monroe	333	Monroe	204
Montgomery	30	Montgomery	3
Nassau	135	Nassau	45
Niagara	77	Niagara	45
Oneida	90	Oneida	61
Onondaga	234	Onondaga	129
Ontario	33	Ontario	15
Orange	73	Orange	31
Orleans	32	Orleans	24
Oswego	80	Oswego	56
Otsego	4	Otsego	2
Putnam	3	Putnam	1
Rensselaer	66	Rensselaer	25
Rockland	28	Rockland	26
St. Lawrence	38	St. Lawrence	15
Saratoga	3	Saratoga	3
Schenectady	73	Schenectady	18
Schoharie	4	Schoharie	0
Schuyler	3	Schuyler	1
Seneca	10	Seneca	6
Steuben	42	Steuben	17
Suffolk	255	Suffolk	116
Sullivan	34	Sullivan	17
Tioga	10	Tioga	5
Tompkins	41	Tompkins	18
Ulster	47	Ulster	24
Warren	8	Warren	9
Washington	16	Washington	11
Wayne	13	Wayne	16
Westchester	211	Westchester	75
Wyoming	7	Wyoming	5
Yates	4	Yates	4

This page intentionally left blank

### ***Section (c)***

## ***Subsidized Work Activities***

- Number of recipients participating in subsidized work activities by type of activity
  - Average weekly hours in subsidized work activities
  - Number of recipients receiving an exemption from participating in work activities
  - Months in work limited status
  - Number of children receiving subsidized child care
  - Expenditures in support of work activities
  - Number of requests for administrative hearings – see Section (f)
- Sanctions

**Table 9: Monthly Average Number of Recipients  
Participating in Subsidized Work Activities by Type of Activity and Average Weekly Hours in all Activities 1  
Temporary Assistance for Needy Families  
July 2024 - June 2025**

	Subsidized Private Sector Employment	Subsidized Public Sector Employment	On the Job Training	Work Experience	Job Search	Job Readiness Training	Community Service	Child Care Provider for Community Service Participant	Substance Use Disorder Treatment	Other Treatment	Average Weekly Hours
Local District											
New York State	-	-	-	-	-	-	-	-	-	-	-
New York City	-	-	-	-	-	-	-	-	-	-	-
Rest of State	18	2	1	269	198	78	16	<1	137	174	10
Albany	0	0	0	4	19	0	0	0	<1	1	3
Allegany	0	0	0	<1	4	1	0	0	4	9	2
Broome	0	0	1	1	6	1	<1	0	4	0	8
Cattaraugus	0	0	<1	<1	<1	<1	0	0	12	0	3
Cayuga	0	0	0	6	7	<1	0	0	12	5	6
Chautauqua	0	0	0	5	14	<1	0	0	4	9	8
Chemung	0	0	0	1	6	7	0	<1	5	0	8
Chenango	0	0	0	0	0	0	0	0	2	0	1
Clinton	0	0	0	<1	3	0	0	0	3	11	11
Columbia	0	0	0	0	3	1	<1	0	1	1	12
Cortland	0	<1	0	<1	3	1	0	0	2	0	5
Delaware	0	0	0	0	0	0	0	0	0	0	0
Dutchess	0	0	0	0	3	0	0	0	0	3	10
Erie	17	0	<1	190	0	<1	0	0	0	1	14
Essex	0	0	0	0	1	0	0	0	<1	2	1
Franklin	0	0	0	1	1	0	0	0	1	2	2
Fulton	0	0	0	0	0	0	0	0	<1	5	<1
Genesee	0	0	0	0	0	0	0	0	1	7	<1
Greene	0	0	0	<1	5	0	0	0	<1	0	10
Hamilton	0	0	0	0	0	0	0	0	0	0	0
Herkimer	0	0	0	1	0	2	0	0	1	4	3
Jefferson	0	0	0	3	5	0	0	0	3	15	7
Lewis	<1	0	0	1	2	0	0	0	1	3	4
Livingston	0	0	0	<1	2	<1	0	0	<1	11	3
Madison	0	<1	0	0	1	<1	0	0	2	7	3
Monroe	0	0	0	5	7	2	0	0	0	21	5
Montgomery	0	0	0	0	<1	0	0	0	0	1	0
Nassau	0	0	0	8	9	1	4	0	2	0	13
Niagara	0	0	0	5	2	1	0	0	9	0	9
Oneida	0	0	0	0	3	1	3	0	0	0	5
Onondaga	0	0	0	3	8	<1	0	0	0	0	6
Ontario	0	0	0	1	8	0	0	0	4	2	3
Orange	0	<1	0	2	0	20	0	0	6	0	7
Orleans	0	0	0	<1	0	<1	0	0	<1	<1	3
Oswego	0	0	0	0	14	6	0	0	16	0	2
Otsego	0	0	0	<1	2	0	0	0	0	1	3
Putnam	0	0	0	0	2	<1	0	0	0	2	11
Rensselaer	0	0	0	0	27	0	0	0	1	0	5
Rockland	0	0	0	1	<1	<1	0	0	4	<1	6
St. Lawrence	0	0	0	5	5	6	1	0	5	8	8
Saratoga	0	<1	0	0	0	0	0	0	1	1	2
Schenectady	0	0	0	1	10	2	0	0	0	0	7
Schoharie	0	0	0	0	<1	<1	0	0	<1	4	<1
Schuyler	0	0	0	0	<1	0	0	0	<1	1	0
Seneca	0	0	0	1	0	0	0	0	2	9	5
Steuben	0	0	0	1	2	<1	0	0	<1	0	7
Suffolk	0	1	0	25	<1	0	7	0	8	0	16
Sullivan	0	0	0	1	9	<1	<1	0	1	1	6
Tioga	0	0	0	0	2	0	<1	0	<1	0	4
Tompkins	0	0	0	0	3	<1	0	0	0	0	3
Ulster	0	0	0	0	0	0	0	0	0	0	0
Warren	0	0	0	0	5	0	0	0	1	6	9
Washington	0	0	0	1	2	0	0	0	3	4	3
Wayne	0	0	0	0	3	<1	0	0	7	14	6
Westchester	0	0	0	2	5	5	0	0	9	1	7
Wyoming	0	0	0	0	3	1	0	0	1	4	6
Yates	0	0	0	0	<1	1	1	0	0	0	<1

**Table 10: Monthly Average Number of Recipients  
Participating in Subsidized Work Activities by Type of Activity and Average Weekly Hours in all Activities 1  
Safety Net MOE  
July 2024 - June 2025**

	Subsidized Private Sector Employment	Subsidized Public Sector Employment	On the Job Training	Work Experience	Job Search	Job Readiness Training	Community Service	Child Care Provider for Community Service Participant	Substance Use Disorder Treatment	Other Treatment	Average Weekly Hours
Local District											
New York State	-	-	-	-	-	-	-	-	-	-	-
New York City	-	-	-	-	-	-	-	-	-	-	-
Rest of State	4	<1	1	135	77	39	13	<1	51	56	12
Albany	0	0	1	0	1	15	0	0	1	2	4
Allegany	0	0	0	0	<1	0	0	0	1	2	2
Broome	0	0	0	1	3	0	<1	0	1	0	9
Cattaraugus	0	0	0	0	0	0	0	0	2	0	1
Cayuga	0	0	0	1	2	0	0	0	3	0	5
Chautauqua	<1	0	0	4	3	<1	0	0	4	4	13
Chemung	0	0	0	0	1	1	0	0	<1	0	4
Chenango	0	0	0	0	0	0	0	0	<1	0	0
Clinton	0	0	0	0	<1	<1	0	0	<1	3	1
Columbia	0	0	0	0	3	1	0	0	<1	0	12
Cortland	0	0	0	<1	<1	<1	0	0	0	0	3
Delaware	0	0	0	0	0	0	0	0	0	0	0
Dutchess	0	0	0	0	0	0	0	0	0	1	<1
Erie	4	0	0	80	0	1	0	0	0	<1	15
Essex	0	0	0	0	0	0	0	0	0	<1	0
Franklin	0	0	0	0	<1	0	0	0	0	2	<1
Fulton	0	0	0	0	0	0	0	0	0	1	<1
Genesee	0	0	0	0	0	0	0	0	1	4	<1
Greene	0	0	0	0	1	0	0	0	<1	0	3
Hamilton	0	0	0	0	0	0	0	0	0	0	0
Herkimer	0	0	0	<1	0	1	0	0	<1	1	3
Jefferson	0	0	0	1	2	0	0	0	3	7	6
Lewis	0	0	0	0	0	0	0	0	0	<1	0
Livingston	0	0	0	0	0	<1	0	0	<1	2	<1
Madison	0	0	0	0	<1	0	0	0	<1	3	<1
Monroe	0	0	0	7	6	1	0	0	0	5	7
Montgomery	0	0	0	0	0	0	0	0	0	1	0
Nassau	0	0	0	6	7	<1	4	0	<1	0	15
Niagara	0	0	0	4	1	<1	0	0	1	0	14
Oneida	0	0	0	1	2	1	<1	0	0	0	7
Onondaga	0	0	0	1	2	<1	0	0	0	0	6
Ontario	0	0	0	<1	3	0	0	0	1	3	3
Orange	0	0	0	1	0	6	0	0	4	0	6
Orleans	0	0	0	0	<1	0	0	0	0	0	0
Oswego	0	0	0	1	5	1	0	0	7	0	8
Otsego	0	0	0	0	<1	0	0	0	0	<1	<1
Putnam	0	0	0	0	1	0	0	0	0	<1	2
Rensselaer	0	0	0	0	20	0	0	0	<1	0	5
Rockland	0	0	0	<1	<1	0	0	0	1	1	5
St. Lawrence	0	0	0	4	2	3	1	0	2	5	12
Saratoga	0	0	0	0	0	0	0	0	0	0	0
Schenectady	0	0	0	0	6	1	0	0	0	0	7
Schoharie	0	0	0	0	<1	0	0	0	0	0	2
Schuyler	0	0	0	0	0	0	0	0	0	2	0
Seneca	0	0	0	0	0	0	0	0	2	3	<1
Steuben	0	0	0	1	1	0	0	0	0	0	13
Suffolk	0	<1	0	19	<1	0	7	0	6	0	16
Sullivan	0	0	0	<1	1	0	0	0	<1	<1	6
Tioga	0	0	0	0	0	0	0	0	<1	0	<1
Tompkins	0	0	0	0	<1	0	0	0	0	0	<1
Ulster	0	0	0	0	0	0	0	0	0	0	0
Warren	0	0	0	0	0	0	0	0	<1	1	<1
Washington	0	0	0	0	0	0	0	0	0	1	0
Wayne	0	0	0	0	1	<1	0	0	2	2	4
Westchester	0	0	0	2	4	5	<1	<1	7	1	9
Wyoming	0	0	0	0	0	0	0	0	1	0	0
Yates	0	0	0	0	<1	1	0	0	0	1	0

**Table 11: Monthly Average Number of Recipients  
Participating in Subsidized Work Activities by Type of Activity and Average Weekly Hours in all Activities 1  
Safety Net Non-MOE  
July 2024 - June 2025**

Local District	Subsidized Private Sector Employment	Subsidized Public Sector Employment	On the Job Training	Work Experience	Job Search	Job Readiness Training	Community Service	Child Care Provider for Community Service Participant	Substance Use Disorder Treatment	Other Treatment	Average Weekly Hours
New York State	-	-	-	-	-	-	-	-	-	-	-
New York City	-	-	-	-	-	-	-	-	-	-	-
Rest of State	2	40	6	2,105	1,139	492	252	0	1,605	641	15
Albany	0	0	4	3	70	21	2	0	48	10	11
Allegany	0	0	0	6	8	2	1	0	30	36	6
Broome	0	0	<1	48	34	2	10	0	42	<1	14
Cattaraugus	0	0	1	17	9	1	<1	0	70	0	8
Cayuga	0	0	0	62	12	0	4	0	68	11	7
Chautauqua	0	0	0	47	32	1	8	0	77	29	18
Chemung	0	0	0	8	14	12	2	0	51	0	13
Chenango	0	0	0	<1	1	0	<1	0	7	0	8
Clinton	0	0	0	21	35	15	1	0	27	36	14
Columbia	0	0	0	6	8	2	2	0	8	1	24
Cortland	0	0	0	11	10	6	1	0	19	0	8
Delaware	0	0	0	3	1	0	0	0	0	0	6
Dutchess	0	0	0	13	4	0	2	0	1	17	12
Erie	0	0	0	439	40	6	32	0	14	<1	14
Essex	0	0	0	2	1	0	0	0	6	6	11
Franklin	0	0	0	22	1	1	3	0	9	13	9
Fulton	0	0	0	12	1	0	2	0	7	12	9
Genesee	0	0	1	2	2	1	0	0	19	22	9
Greene	<1	1	0	9	15	0	1	0	14	0	26
Hamilton	0	0	0	0	0	0	0	0	0	0	0
Herkimer	0	0	0	9	<1	4	1	0	15	18	6
Jefferson	0	0	0	43	15	0	5	0	43	27	7
Lewis	<1	0	0	2	3	0	0	0	10	13	5
Livingston	<1	0	0	14	3	1	0	0	4	35	3
Madison	0	0	0	3	3	0	<1	0	11	24	4
Monroe	<1	0	0	42	22	35	14	0	47	51	8
Montgomery	0	0	0	11	<1	0	<1	0	1	11	4
Nassau	0	37	0	84	145	2	12	0	39	2	11
Niagara	0	0	0	72	5	6	1	0	83	<1	14
Oneida	0	0	0	30	19	5	51	0	0	0	14
Onondaga	1	0	0	11	11	<1	8	0	0	0	16
Ontario	0	<1	0	22	20	1	3	0	22	18	7
Orange	0	0	0	10	21	24	5	0	94	1	70
Orleans	0	0	0	8	1	0	2	0	27	22	5
Oswego	0	<1	0	7	64	30	6	0	69	0	8
Otsego	0	0	0	6	8	0	2	0	<1	1	12
Putnam	0	0	0	1	5	0	<1	0	7	12	15
Rensselaer	0	0	0	13	17	0	2	0	32	0	13
Rockland	0	0	0	51	1	<1	4	0	60	12	19
St. Lawrence	0	0	0	35	37	252	4	0	40	51	8
Saratoga	0	<1	0	1	0	0	<1	0	7	6	7
Schenectady	0	0	0	18	22	15	7	0	<1	0	20
Schoharie	0	0	0	2	3	<1	<1	0	5	10	8
Schuyler	0	0	0	1	2	3	<1	0	1	10	4
Seneca	0	0	0	9	0	0	1	0	19	21	3
Steuben	0	0	0	24	19	3	11	0	18	2	12
Suffolk	0	2	0	723	193	0	18	0	221	<1	18
Sullivan	0	0	0	16	33	1	1	0	22	6	16
Tioga	0	0	0	1	2	0	1	0	1	2	10
Tompkins	0	1	0	14	16	1	3	0	0	0	12
Ulster	0	0	0	1	0	0	1	0	<1	0	13
Warren	0	0	0	7	17	0	<1	0	13	11	13
Washington	0	0	0	4	2	0	1	0	9	19	6
Wayne	0	0	0	4	6	2	3	0	50	50	7
Westchester	<1	0	0	74	123	31	6	0	112	2	11
Wyoming	0	0	0	1	6	4	1	0	7	11	10
Yates	0	0	0	3	1	1	7	0	<1	<1	2



**Table 12: Monthly Average Number of Recipients Receiving an Exemption from Participating in Work Activities  
Temporary Assistance for Needy Families  
July 2024 - June 2025**

Local District	Nonexempt			Exempt			
	Total Nonexempt	Work Limited	All Others	Total Exempt	Illness/Disability	Substance Use Disorder	All Others
New York State	56,484	785	55,699	11,485	5,267	464	5,754
New York City	49,698	380	49,319	5,791	2,041	76	3,673
Rest of State	6,786	406	6,380	5,695	3,226	387	2,082
Albany	286	15	272	98	32	2	64
Allegany	17	2	16	33	23	1	9
Broome	214	11	204	161	79	19	63
Cattaraugus	73	3	71	89	44	22	24
Cayuga	59	2	57	90	57	17	16
Chautauqua	294	20	274	213	107	16	91
Chemung	52	4	47	95	47	8	40
Chenango	34	3	31	30	21	3	6
Clinton	57	3	55	103	41	6	55
Columbia	16	0	16	27	13	2	12
Cortland	23	2	21	49	36	3	10
Delaware	9	1	9	16	8	1	7
Dutchess	39	6	33	72	47	9	16
Erie	1,061	47	1,014	982	521	34	427
Essex	3	0	3	3	2	0	1
Franklin	39	2	37	45	30	1	14
Fulton	39	2	37	56	22	3	31
Genesee	3	1	2	27	21	5	2
Greene	15	1	14	10	6	0	4
Hamilton	2	0	2	2	0	0	2
Herkimer	14	2	12	45	31	2	13
Jefferson	32	2	30	70	49	8	13
Lewis	4	0	4	8	4	1	3
Livingston	23	3	21	43	31	3	10
Madison	4	1	3	20	13	4	2
Monroe	781	60	721	615	377	90	148
Montgomery	43	3	40	36	16	3	17
Nassau	327	16	311	126	63	6	57
Niagara	120	8	112	131	75	28	28
Oneida	197	4	192	293	211	5	77
Onondaga	721	47	674	556	349	2	206
Ontario	62	2	60	53	22	7	24
Orange	211	8	203	89	41	6	42
Orleans	39	2	37	64	44	5	15
Oswego	78	8	70	136	91	12	34
Otsego	12	2	10	7	4	1	2
Putnam	3	0	3	3	2	0	1
Rensselaer	119	3	116	66	36	1	29
Rockland	81	2	80	43	15	2	27
St. Lawrence	57	5	51	56	34	3	19
Saratoga	2	1	2	26	14	3	9
Schenectady	143	8	135	114	65	2	47
Schoharie	8	0	8	11	8	0	3
Schuyler	3	1	2	5	3	0	2
Seneca	21	1	21	20	15	0	5
Steuben	58	5	53	72	47	2	22
Suffolk	334	58	276	278	96	11	171
Sullivan	46	1	46	40	29	0	11
Tioga	8	0	8	12	8	1	3
Tompkins	65	3	61	59	37	6	15
Ulster	81	3	79	56	25	4	27
Warren	22	3	19	21	14	0	7
Washington	34	5	29	42	23	3	16
Wayne	16	2	14	43	26	8	9
Westchester	665	16	649	210	130	6	74
Wyoming	10	0	10	15	11	3	1
Yates	6	1	6	14	11	0	3

**Table 13: Monthly Average Number of Recipients Receiving an Exemption from Participating in Work Activities  
Safety Net MOE  
July 2024 - June 2025**

Local District	Nonexempt			Exempt			
	Total Nonexempt	Work Limited	All Others	Total Exempt	Illness/Disability	Substance Use Disorder	All Others
New York State	48,653	1,736	46,917	9,284	2,646	418	6,220
New York City	45,449	1,298	44,151	7,237	1,596	153	5,487
Rest of State	3,204	438	2,766	2,047	1,050	265	733
Albany	121	13	108	46	17	2	26
Allegany	2	0	2	4	3	0	1
Broome	107	20	87	68	37	8	24
Cattaraugus	15	2	13	20	6	7	6
Cayuga	22	5	17	21	10	7	4
Chautauqua	117	19	99	76	40	15	20
Chemung	8	0	8	15	6	1	8
Chenango	2	1	2	3	2	1	0
Clinton	13	1	12	19	10	3	7
Columbia	5	0	5	13	7	2	5
Cortland	5	1	4	10	9	0	1
Delaware	1	0	1	4	2	1	2
Dutchess	5	0	5	14	10	1	3
Erie	488	47	441	342	107	42	193
Essex	1	0	1	0	0	0	0
Franklin	8	2	6	7	4	0	3
Fulton	3	0	3	5	3	0	2
Genesee	3	2	2	5	2	2	0
Greene	4	1	3	3	2	1	0
Hamilton	0	0	0	0	0	0	0
Herkimer	5	0	5	5	3	0	2
Jefferson	19	2	17	30	25	2	2
Lewis	0	0	0	0	0	0	0
Livingston	10	2	8	11	8	1	1
Madison	1	1	0	10	8	0	1
Monroe	428	88	341	286	130	109	47
Montgomery	21	6	15	16	9	1	7
Nassau	192	22	170	90	59	5	26
Niagara	39	7	32	29	17	4	8
Oneida	132	6	126	55	32	2	20
Onondaga	271	44	227	191	105	2	85
Ontario	10	1	10	16	10	2	4
Orange	85	6	80	88	53	8	27
Orleans	9	1	8	14	9	2	4
Oswego	26	6	20	29	16	5	9
Otsego	1	0	1	4	3	1	0
Putnam	1	1	0	1	1	0	0
Rensselaer	85	4	82	38	25	0	13
Rockland	27	1	26	14	8	1	6
St. Lawrence	25	5	20	25	20	1	4
Saratoga	0	0	0	1	1	0	0
Schenectady	66	7	59	49	29	5	16
Schoharie	2	0	2	2	1	0	1
Schuyler	1	0	1	3	3	0	0
Seneca	6	1	5	14	10	2	2
Steuben	14	4	10	11	8	0	3
Suffolk	230	64	166	171	82	7	82
Sullivan	13	0	13	15	9	0	5
Tioga	1	1	1	6	3	1	1
Tompkins	11	1	10	9	6	1	2
Ulster	40	7	33	20	13	2	5
Warren	1	0	1	3	3	0	0
Washington	2	1	1	4	3	0	1
Wayne	3	0	2	6	4	2	0
Westchester	494	37	457	108	58	6	44
Wyoming	1	0	1	1	1	0	0
Yates	2	0	2	2	2	0	1

**Table 14: Monthly Average Number of Recipients Receiving an Exemption from Participating in Work Activities**  
**Safety Net Non-MOE**  
**July 2024 - June 2025**

Local District	Nonexempt			Exempt			
	Total Nonexempt	Work Limited	All Others	Total Exempt	Illness/Disability	Substance Use Disorder	All Others
New York State	171,008	4,571	166,437	117,133	34,555	8,148	74,429
New York City	157,455	2,724	154,731	95,017	24,650	3,484	66,883
Rest of State	13,554	1,847	11,707	22,116	9,905	4,664	7,546
Albany	506	47	459	485	107	88	289
Allegany	30	5	25	82	57	14	12
Broome	425	65	360	671	307	158	206
Cattaraugus	126	8	117	354	164	144	46
Cayuga	60	9	52	287	124	127	36
Chautauqua	513	97	416	700	380	141	179
Chemung	68	9	60	281	143	69	70
Chenango	44	9	35	92	59	19	14
Clinton	115	10	105	308	119	65	124
Columbia	31	0	31	105	47	23	35
Cortland	45	7	38	209	120	66	24
Delaware	20	4	16	50	31	3	16
Dutchess	41	17	24	325	173	95	57
Erie	2,263	278	1,986	2,635	1,120	573	941
Essex	4	1	3	18	9	5	4
Franklin	99	19	80	188	130	17	42
Fulton	50	5	45	145	58	26	62
Genesee	5	1	4	102	52	47	3
Greene	36	2	35	79	48	18	14
Hamilton	0	0	0	5	4	1	0
Herkimer	23	2	20	134	81	22	31
Jefferson	90	13	77	303	147	111	44
Lewis	9	1	8	34	19	7	8
Livingston	43	15	28	154	83	44	27
Madison	7	2	5	102	62	28	13
Monroe	1,744	188	1,556	2,308	798	937	573
Montgomery	63	16	47	108	57	32	20
Nassau	834	95	740	1,587	542	98	946
Niagara	172	34	138	510	227	192	91
Oneida	426	6	420	822	529	77	216
Onondaga	1,392	148	1,244	1,567	796	151	620
Ontario	125	11	114	270	147	61	62
Orange	230	21	208	494	207	114	172
Orleans	92	8	83	175	115	36	25
Oswego	177	31	147	328	221	57	50
Otsego	29	4	25	78	43	17	19
Putnam	8	0	7	23	16	5	2
Rensselaer	131	8	124	173	94	41	38
Rockland	197	7	189	286	100	46	140
St. Lawrence	147	31	116	243	164	38	42
Saratoga	10	4	6	137	84	25	28
Schenectady	159	22	138	388	184	87	117
Schoharie	10	1	9	48	35	6	7
Schuyler	11	4	7	30	20	4	6
Seneca	21	2	18	80	48	19	12
Steuben	185	31	154	264	164	29	71
Suffolk	993	337	656	2,097	598	294	1,205
Sullivan	104	6	98	136	94	15	27
Tioga	9	2	8	64	37	17	11
Tompkins	113	12	101	247	161	44	42
Ulster	181	38	143	239	105	67	67
Warren	35	6	29	63	36	12	15
Washington	48	10	38	113	73	16	24
Wayne	21	3	18	157	79	63	15
Westchester	1,215	136	1,079	1,102	402	128	571
Wyoming	10	1	9	87	51	25	10
Yates	12	3	9	44	32	3	9

**Table 15: Consecutive Number of Months in Work Limited Status**  
**Total Public Assistance**  
**June 2025**

Local District	Total Work Limited Recipients	0-3 Months	4-6 Months	7-12 Months	> 1 Year
New York State	7,295	1,652	1,782	1,899	1,962
New York City	4,352	836	946	1,248	1,322
Rest of State	2,943	816	836	651	640
Albany	81	28	26	16	11
Allegany	6	3	2	1	0
Broome	121	36	30	35	20
Cattaraugus	10	1	3	4	2
Cayuga	15	6	4	2	3
Chautauqua	152	32	40	45	35
Chemung	19	13	2	3	1
Chenango	12	4	1	7	0
Clinton	15	4	4	4	3
Columbia	1	1	0	0	0
Cortland	10	4	5	1	0
Delaware	4	2	1	1	0
Dutchess	31	15	7	3	6
Erie	382	75	93	94	120
Essex	1	0	1	0	0
Franklin	30	15	4	6	5
Fulton	12	8	3	1	0
Genesee	4	2	2	0	0
Greene	2	0	2	0	0
Hamilton	0	0	0	0	0
Herkimer	1	0	0	0	1
Jefferson	15	2	6	4	3
Lewis	1	0	1	0	0
Livingston	20	4	12	2	2
Madison	7	2	4	0	1
Monroe	374	119	116	65	74
Montgomery	24	8	6	5	5
Nassau	134	39	22	37	36
Niagara	48	15	11	10	12
Oneida	15	3	6	2	4
Onondaga	268	75	84	64	45
Ontario	12	3	4	3	2
Orange	39	9	12	9	9
Orleans	13	6	4	2	1
Oswego	53	18	18	10	7
Otsego	9	4	2	2	1
Putnam	1	0	1	0	0
Rensselaer	22	13	4	4	1
Rockland	14	1	4	8	1
St. Lawrence	32	4	8	10	10
Saratoga	3	0	2	0	1
Schenectady	38	13	12	5	8
Schoharie	2	1	1	0	0
Schuyler	6	0	1	4	1
Seneca	4	0	2	0	2
Steuben	41	8	7	10	16
Suffolk	564	158	195	112	99
Sullivan	6	1	4	1	0
Tioga	4	1	2	1	0
Tompkins	15	4	7	3	1
Ulster	54	16	11	13	14
Warren	11	9	0	1	1
Washington	22	9	5	5	3
Wayne	8	3	4	1	0
Westchester	152	19	27	33	73
Wyoming	1	0	1	0	0
Yates	2	0	0	2	0

**Table 16: Consecutive Number of Months in Work Limited Status by Case Category  
June 2025**

Local District	TANF				Safety Net MOE				Safety Net Non-MOE			
	0-3	4-6	7-12	> 1 Year	0-3	4-6	7-12	> 1 Year	0-3	4-6	7-12	> 1 Year
New York State	244	247	222	142	311	249	382	598	1,097	1,286	1,295	1,222
New York City	93	109	132	77	198	152	274	454	545	685	842	791
Rest of State	151	138	90	65	113	97	108	144	552	601	453	431
Albany	5	4	2	3	3	2	4	2	20	20	10	6
Allegany	0	0	0	0	1	0	0	0	2	2	1	0
Broome	5	1	4	1	4	8	6	4	27	21	25	15
Cattaraugus	1	0	0	1	0	0	0	0	0	3	4	1
Cayuga	3	1	0	0	1	1	1	1	2	2	1	2
Chautauqua	3	7	4	4	4	6	10	4	25	27	31	27
Chemung	4	0	1	0	2	0	0	0	7	2	2	1
Chenango	1	0	2	0	0	0	0	0	3	1	5	0
Clinton	0	0	0	1	0	2	0	0	4	2	4	2
Columbia	0	0	0	0	1	0	0	0	0	0	0	0
Cortland	2	0	0	0	0	1	0	0	2	4	1	0
Delaware	1	0	0	0	0	0	0	0	1	1	1	0
Dutchess	4	3	0	1	0	1	0	0	11	3	3	5
Erie	14	9	18	8	14	9	11	14	47	75	65	98
Essex	0	0	0	0	0	0	0	0	0	1	0	0
Franklin	3	1	0	0	1	0	1	1	11	3	5	4
Fulton	4	1	1	0	0	0	0	0	4	2	0	0
Genesee	0	1	0	0	2	0	0	0	0	1	0	0
Greene	0	0	0	0	0	0	0	0	0	2	0	0
Hamilton	0	0	0	0	0	0	0	0	0	0	0	0
Herkimer	0	0	0	0	0	0	0	0	0	0	0	1
Jefferson	0	4	0	0	0	1	0	1	2	1	4	2
Lewis	0	0	0	0	0	0	0	0	0	1	0	0
Livingston	2	1	0	0	0	0	0	1	2	11	2	1
Madison	0	2	0	0	0	0	0	1	2	2	0	0
Monroe	23	23	8	10	24	21	17	29	72	72	40	35
Montgomery	3	1	0	0	0	1	1	2	5	4	4	3
Nassau	5	7	5	2	5	3	5	8	29	12	27	26
Niagara	5	2	2	0	2	1	2	3	8	8	6	9
Oneida	0	2	1	1	2	1	0	3	1	3	1	0
Onondaga	24	12	12	5	10	11	11	14	41	61	41	26
Ontario	0	0	0	1	0	0	0	0	3	4	3	1
Orange	1	4	1	1	1	1	1	3	7	7	7	5
Orleans	0	2	0	0	1	0	0	0	5	2	2	1
Oswego	3	2	3	0	1	2	1	2	14	14	6	5
Otsego	1	2	0	1	0	0	0	0	3	0	2	0
Putnam	0	0	0	0	0	1	0	0	0	0	0	0
Rensselaer	5	1	0	0	2	0	4	0	6	3	0	1
Rockland	0	1	2	0	1	1	0	0	0	2	6	1
St. Lawrence	0	2	2	1	1	1	1	1	3	5	7	8
Saratoga	0	0	0	0	0	0	0	0	0	2	0	1
Schenectady	0	0	1	2	7	4	1	2	6	8	3	4
Schoharie	0	1	0	0	0	0	0	0	1	0	0	0
Schuyler	0	0	1	0	0	0	0	0	0	1	3	1
Seneca	0	1	0	0	0	0	0	1	0	1	0	1
Steuben	2	2	1	1	0	0	2	3	6	5	7	12
Suffolk	12	29	15	12	18	12	22	15	128	154	75	72
Sullivan	0	0	0	0	0	0	0	0	1	4	1	0
Tioga	0	0	0	0	0	0	1	0	1	2	0	0
Tompkins	2	1	0	0	0	0	1	0	2	6	2	1
Ulster	2	1	0	1	2	1	2	5	12	9	11	8
Warren	4	0	0	1	0	0	0	0	5	0	1	0
Washington	4	2	0	2	0	0	0	0	5	3	5	1
Wayne	0	2	1	0	1	0	0	0	2	2	0	0
Westchester	3	3	3	5	2	5	3	24	14	19	27	44
Wyoming	0	0	0	0	0	0	0	0	0	1	0	0
Yates	0	0	0	0	0	0	0	0	0	0	2	0

**Table 17: Average Number of Children Receiving Subsidized Child Care  
Funded under the NYS Child Care Block Grant 2  
July 2024 - June 2025**

Local District	Low Income	Public Assistance	Total Subsidized Child Care
New York State	122,587	25,852	148,784
New York City	70,089	23,695	93,784
Rest of State	52,498	2,157	54,655
Albany	1,076	47	1,123
Allegany	154	0	154
Broome	1,078	64	1,142
Cattaraugus	465	5	470
Cayuga	275	14	289
Chautauqua	811	42	853
Chemung	607	9	616
Chenango	142	6	148
Clinton	306	4	310
Columbia	118	2	120
Cortland	213	13	226
Delaware	241	0	241
Dutchess	975	2	977
Erie	4,986	385	5,371
Essex	110	2	112
Franklin	255	1	256
Fulton	93	1	94
Genesee	210	1	211
Greene	62	2	64
Hamilton	14	0	14
Herkimer	256	0	256
Jefferson	558	1	559
Lewis	75	1	76
Livingston	293	9	302
Madison	264	10	274
Monroe	6,816	248	7,064
Montgomery	334	6	340
Nassau	6,792	113	6,905
Niagara	944	3	947
Oneida	1,601	82	1,683
Onondaga	3,717	398	4,115
Ontario	509	8	517
Orange	1,144	89	1,233
Orleans	136	10	146
Oswego	481	3	484
Otsego	158	3	161
Putnam	90	5	95
Rensselaer	723	2	725
Rockland	1,001	37	1,038
St. Lawrence	420	0	420
Saratoga	556	1	557
Schenectady	1,459	75	1,534
Schoharie	71	3	74
Schuyler	84	5	89
Seneca	172	7	179
Steuben	944	1	945
Suffolk	4,265	254	4,519
Sullivan	310	11	321
Tioga	260	0	260
Tompkins	394	8	402
Ulster	481	1	482
Warren	218	0	218
Washington	174	2	176
Wayne	329	1	330
Westchester	4,050	154	4,204
Wyoming	140	2	142
Yates	88	4	92

**Table 18: Expenditures in Support of Work Activities  
October 2023 through September 2024**

	Federal	State	Local	Total Expenditures
Family Assistance (TANF)	\$153,522,712	\$1,030,446	\$3,524,203	\$158,077,361
Federally Non-Participating	\$0	\$1,960,669	\$85,516,237	\$87,476,906
Supplemental Nutrition Assistance Program Employment and Training	\$57,584,057	\$4,532,481	\$46,979,877	\$109,096,415
Total Expenditures	\$211,106,769	\$7,523,596	\$136,020,317	\$354,650,683

### Section (c) Subsidized Work Activities Footnotes

- 1 Data Sources for Tables 9-11. Data for rest of state districts is derived from the Welfare to Work Caseload Management System (WTWCMS), a NYS built and maintained data system for rest of state districts, which contains all necessary data for this purpose. Recipients may be participating in more than one activity. New York City does not use WTWCMS to manage public assistance work, training and education activities.

Due to the transition to a new reporting system during this period, New York City is unable to provide participation and hours in work activities data for Tables 9-11.

- 2 Data sources for Table 17. For rest of state counties, child care payments in the Welfare Reporting and Tracking System database are extracted retrospectively for each month. Low Income Day Care children are those with a case type of 20 (Medical Assistance), 22 (Medical Assistance - SSI), 24 (Medical Assistance - Family Health Plus), 31 (Non-PA Supplemental Nutrition Assistance Program), or 40 (Services) and Services Type Suffix R (Low Income Day Care). Public Assistance Day care children are those with a case type of 11 (Family Assistance), 12 (Safety Net FP Non-Cash), 16 (Safety Net FNP Cash), 17 (Safety Net FNP Non-Cash), 19 (Emergency Assistance to Families), 32 (SNAP - Mixed Households), or 40 (Services) and Services Type Suffix S (PA Day Care) or E (Emergency Assistance to Families). For New York City, a monthly data file of all cases with child care authorizations from the Administration for Children's Services (ACS) and the Human Resources Administration (HRA) is forwarded to OCFS. New York City case types are estimated using the designation ACS (low income) or HRA (PA) as provided by New York City. Numbers of children receiving subsidized child care includes subsidies funded under the NYS Child Care Block Grant as well as supplemental child care subsidy funding under the American Recovery and Reinvestment Act.

A monthly average of 349 additional child care subsidies were also distributed through several demonstration projects for students at CUNY and SUNY schools through NYS Department of Agriculture and Markets. These additional subsidies are not included in Table 17.



***Section (d)***

***Unsubsidized Work Activities***

- Number of recipients in unsubsidized employment
- Average weekly hours in unsubsidized employment
- Number of requests for administrative hearings – see Section (f)  
Sanctions

**Table 19: Monthly Average Number of Recipients Participating in Unsubsidized Employment  
and Average Weekly Hours 1  
July 2024 - June 2025**

Local District	Monthly Average Recipients			Average Weekly Hours		
	TANF	Safety Net MOE	Safety Net Non-MOE	TANF	Safety Net MOE	Safety Net Non-MOE
New York State	21,270	13,757	15,803	25	24	-
New York City	16,778	12,617	13,473	24	24	-
Rest of State	2,478	1,273	2,330	23	23	21
Albany	69	30	62	24	26	21
Allegany	10	1	10	21	21	17
Broome	71	42	88	21	20	18
Cattaraugus	31	5	36	21	27	19
Cayuga	38	14	31	21	22	20
Chautauqua	102	54	86	22	21	18
Chemung	25	4	19	27	26	24
Chenango	13	1	9	22	20	17
Clinton	23	7	32	20	22	18
Columbia	7	2	11	22	21	23
Cortland	15	4	20	21	21	23
Delaware	3	2	2	17	27	8
Dutchess	18	3	7	24	18	18
Erie	379	202	212	24	24	20
Essex	<1	1	1	3	5	14
Franklin	15	6	25	21	19	17
Fulton	9	2	6	22	25	13
Genesee	3	2	8	22	28	17
Greene	4	1	6	23	8	24
Hamilton	<1	0	<1	3	0	4
Herkimer	4	1	5	24	34	17
Jefferson	14	8	31	19	21	20
Lewis	2	0	3	17	0	22
Livingston	10	6	16	20	27	21
Madison	2	0	3	14	0	17
Monroe	274	177	223	24	23	22
Montgomery	19	8	10	20	27	16
Nassau	129	68	261	24	23	21
Niagara	51	17	41	22	22	21
Oneida	60	64	47	25	23	22
Onondaga	311	130	227	24	22	21
Ontario	28	6	49	23	23	22
Orange	93	43	63	23	22	22
Orleans	19	6	28	19	27	19
Oswego	32	13	37	21	19	22
Otsego	5	1	9	20	8	24
Putnam	1	1	1	10	5	8
Rensselaer	24	26	8	22	22	18
Rockland	29	12	41	26	19	20
St. Lawrence	23	8	31	20	22	17
Saratoga	<1	0	3	7	0	8
Schenectady	48	23	39	23	22	23
Schoharie	4	3	4	17	27	26
Schuyler	2	<1	2	18	7	11
Seneca	11	6	10	19	18	19
Steuben	22	6	37	19	25	18
Suffolk	141	112	174	26	27	24
Sullivan	18	7	25	26	23	22
Tioga	3	1	3	26	13	18
Tompkins	17	5	28	18	21	18
Ulster	15	3	10	20	22	14
Warren	8	1	9	22	10	20
Washington	16	1	12	23	20	21
Wayne	15	3	11	20	24	24
Westchester	184	128	151	25	23	24
Wyoming	6	<1	4	21	2	15
Yates	3	2	5	22	26	21

#### **Section (d) Unsubsidized Work Activities Footnotes**

- 1 Data Sources for Table 19. Data for New York State and New York City for TANF and SNA MOE are based on sample data from the Federal TANF and SNA MOE quarterly disaggregated reports submitted to the US Department of Health and Human Services for the period of July 2024 to June 2025. The quarterly TANF/MOE sample is the only source for New York City and thus statewide data on TANF and SNA MOE work participation. Data for all other districts is derived from the Welfare to Work Caseload Management System (WTWCMS), a NYS built and maintained data system for rest of state districts, which contains all necessary data for this purpose. While the statewide sample results are close to the sum of sample data for New York City and rest of state data from WTWCMS, the figures will not sum exactly to the statewide total.

This page intentionally left blank

***Section (e)***

***Training and Educational Activities***

- Number of recipients in training or educational activities by type of activity
- Average weekly hours in training or educational activities
- Expenditures – see Section (c) Subsidized Work Activities

**Table 20: Monthly Average Number of Recipients  
Participating in Training and Education by Type of Activity and Average Weekly Hours in all Activities 1  
Temporary Assistance for Needy Families  
July 2024 - June 2025**

	Vocational Education	Job Skills Training	Educational Training	Secondary School or Equivalent	Teen Head of Household	Other Activities	Average Weekly Hours
Local District							
New York State	-	-	-	-	-	-	-
New York City	-	-	-	-	-	-	-
Rest of State	33	123	133	10	<1	23	11
Albany	0	5	<1	0	0	<1	1
Allegany	0	<1	1	0	0	1	1
Broome	1	<1	3	0	0	0	8
Cattaraugus	0	0	1	<1	0	<1	1
Cayuga	<1	<1	1	0	0	<1	3
Chautauqua	1	<1	2	<1	0	0	14
Chemung	0	0	<1	0	0	12	<1
Chenango	0	0	0	0	0	0	0
Clinton	0	0	0	1	0	0	10
Columbia	<1	0	0	0	0	0	9
Cortland	0	0	0	0	0	0	0
Delaware	0	0	0	0	0	0	0
Dutchess	0	0	0	<1	0	0	<1
Erie	5	115	84	0	0	0	11
Essex	0	<1	0	0	0	<1	<1
Franklin	0	0	1	0	0	0	3
Fulton	0	0	0	0	0	0	0
Genesee	0	0	0	0	0	0	0
Greene	0	0	0	0	0	<1	0
Hamilton	1	0	0	0	0	<1	9
Herkimer	0	0	<1	0	0	0	<1
Jefferson	0	0	1	1	0	<1	3
Lewis	<1	0	0	1	0	0	3
Livingston	0	<1	<1	<1	0	<1	2
Madison	0	0	0	0	0	0	0
Monroe	2	0	6	0	0	0	11
Montgomery	0	0	0	0	0	0	0
Nassau	4	0	5	0	0	<1	12
Niagara	1	0	2	0	0	0	10
Oneida	0	0	6	1	<1	2	9
Onondaga	4	0	3	0	0	0	13
Ontario	0	0	1	0	0	0	2
Orange	3	0	1	0	0	1	13
Orleans	<1	0	<1	<1	0	0	9
Oswego	0	<1	0	0	0	<1	0
Otsego	0	0	0	0	0	0	0
Putnam	0	0	0	0	0	0	0
Rensselaer	<1	0	0	0	0	<1	4
Rockland	1	0	0	2	0	1	16
St. Lawrence	1	<1	0	<1	0	<1	5
Saratoga	0	0	0	0	0	<1	0
Schenectady	<1	<1	1	1	0	<1	6
Schoharie	0	0	0	0	0	0	0
Schuyler	0	0	0	0	0	0	0
Seneca	0	0	0	2	0	2	2
Steuben	0	0	0	0	0	0	0
Suffolk	6	<1	6	0	0	0	17
Sullivan	<1	0	<1	0	0	<1	<1
Tioga	0	0	0	0	0	<1	0
Tompkins	0	0	<1	<1	0	<1	5
Ulster	0	0	0	0	0	0	0
Warren	0	0	0	0	0	0	0
Washington	0	0	0	<1	0	<1	0
Wayne	0	0	<1	0	0	0	1
Westchester	5	1	7	<1	0	1	9
Wyoming	0	0	<1	0	0	0	3
Yates	0	0	0	0	0	0	0

**Table 21: Monthly Average Number of Recipients  
Participating in Training and Education by Type of Activity and Average Weekly Hours in all Activities 1  
Safety Net MOE  
July 2024 - June 2025**

	Vocational Education	Job Skills Training	Educational Training	Secondary School or Equivalent	Teen Head of Household	Other Activities	Average Weekly Hours
Local District							
New York State	-	-	-	-	-	-	-
New York City	-	-	-	-	-	-	-
Rest of State	10	78	52	4	0	6	11
Albany	0	4	0	0	0	0	2
Allegany	0	0	1	0	0	0	<1
Broome	0	0	3	0	0	0	6
Cattaraugus	0	0	<1	0	0	0	1
Cayuga	0	0	0	0	0	0	0
Chautauqua	0	<1	<1	<1	0	<1	1
Chemung	0	0	0	0	0	2	0
Chenango	0	0	0	0	0	0	0
Clinton	0	0	<1	<1	0	0	6
Columbia	0	0	0	0	0	0	0
Cortland	0	0	0	0	0	0	0
Delaware	0	0	0	0	0	0	0
Dutchess	0	0	0	0	0	0	0
Erie	2	73	30	0	0	0	11
Essex	0	0	0	0	0	<1	0
Franklin	0	0	0	0	0	0	0
Fulton	0	0	0	0	0	0	0
Genesee	0	0	0	0	0	0	0
Greene	0	0	0	0	0	0	0
Hamilton	0	0	0	0	0	0	0
Herkimer	0	0	0	0	0	0	0
Jefferson	0	0	0	1	0	0	4
Lewis	0	0	0	0	0	0	0
Livingston	0	0	0	0	0	<1	0
Madison	0	0	0	0	0	0	0
Monroe	2	0	5	0	0	0	10
Montgomery	0	0	0	0	0	0	0
Nassau	1	0	3	0	0	<1	14
Niagara	0	0	1	0	0	0	8
Oneida	<1	0	<1	0	0	1	5
Onondaga	1	<1	1	<1	0	0	9
Ontario	0	0	0	0	0	0	0
Orange	<1	0	<1	0	0	<1	8
Orleans	0	0	<1	0	0	0	1
Oswego	0	0	<1	0	0	0	<1
Otsego	0	0	0	0	0	0	0
Putnam	0	0	0	0	0	0	0
Rensselaer	0	0	0	0	0	2	0
Rockland	<1	0	0	<1	0	0	5
St. Lawrence	0	0	0	0	0	<1	0
Saratoga	0	0	0	0	0	0	0
Schenectady	<1	0	<1	1	0	0	3
Schoharie	0	0	0	0	0	0	0
Schuyler	0	0	<1	0	0	0	0
Seneca	0	0	0	<1	0	0	<1
Steuben	0	0	0	0	0	0	0
Suffolk	2	0	1	<1	0	0	21
Sullivan	0	0	0	0	0	<1	0
Tioga	0	0	0	0	0	0	0
Tompkins	0	0	0	0	0	0	0
Ulster	0	0	0	0	0	0	0
Warren	0	0	0	0	0	0	0
Washington	0	0	0	0	0	0	0
Wayne	0	0	0	0	0	0	0
Westchester	3	1	6	0	0	1	9
Wyoming	0	0	0	0	0	0	0
Yates	0	0	0	0	0	0	0

**Table 22: Monthly Average Number of Recipients  
Participating in Training and Education by Type of Activity and Average Weekly Hours in all Activities 1  
Safety Net Non-MOE  
July 2024 - June 2025**

	Vocational Education	Job Skills Training	Educational Training	Secondary School or Equivalent	Teen Head of Household	Other Activities	Average Weekly Hours
Local District							
New York State	-	-	-	-	-	-	-
New York City	-	-	-	-	-	-	-
Rest of State	58	81	161	25	1	27	16
Albany	<1	14	2	0	0	0	3
Allegany	1	2	1	<1	0	1	17
Broome	1	1	10	<1	0	0	8
Cattaraugus	<1	<1	3	0	0	<1	11
Cayuga	0	0	2	0	0	0	2
Chautauqua	<1	1	1	0	0	<1	8
Chemung	<1	0	<1	0	0	16	5
Chenango	0	0	0	0	0	0	0
Clinton	0	0	0	<1	0	0	2
Columbia	0	<1	<1	0	0	1	3
Cortland	0	0	0	0	0	0	0
Delaware	0	0	0	0	0	0	0
Dutchess	0	0	0	<1	0	<1	0
Erie	4	57	64	0	0	0	22
Essex	0	0	0	<1	0	0	8
Franklin	0	0	3	0	0	0	4
Fulton	1	0	0	0	0	0	1
Genesee	0	0	0	0	0	0	0
Greene	0	0	<1	1	<1	0	14
Hamilton	0	0	0	0	0	0	0
Herkimer	0	0	0	0	0	<1	0
Jefferson	0	0	2	1	0	0	5
Lewis	0	0	0	1	0	0	10
Livingston	<1	<1	1	<1	0	1	6
Madison	0	0	1	0	0	<1	5
Monroe	13	0	13	0	0	0	15
Montgomery	<1	0	0	<1	0	0	0
Nassau	4	<1	18	4	0	<1	11
Niagara	1	0	2	0	0	0	13
Oneida	<1	<1	7	4	0	4	13
Onondaga	3	1	2	0	0	0	11
Ontario	0	0	<1	0	0	0	0
Orange	1	0	1	<1	0	0	12
Orleans	<1	<1	0	1	0	<1	4
Oswego	<1	<1	<1	0	0	0	1
Otsego	0	0	0	0	0	0	0
Putnam	0	0	<1	0	0	0	4
Rensselaer	<1	<1	1	1	0	1	10
Rockland	1	0	0	7	0	1	10
St. Lawrence	2	0	1	0	0	<1	10
Saratoga	0	0	0	0	0	0	0
Schenectady	1	<1	3	2	0	<1	7
Schoharie	<1	0	0	<1	0	0	1
Schuyler	<1	0	0	0	0	0	0
Seneca	0	0	<1	1	0	0	2
Steuben	<1	0	1	0	0	0	3
Suffolk	3	<1	8	1	0	0	14
Sullivan	<1	<1	0	<1	1	0	15
Tioga	0	0	0	<1	0	0	0
Tompkins	0	0	<1	<1	0	<1	3
Ulster	0	0	0	0	0	0	0
Warren	0	0	0	0	0	0	0
Washington	0	0	0	0	0	0	0
Wayne	<1	0	1	<1	0	0	1
Westchester	19	1	13	0	0	1	11
Wyoming	0	0	<1	0	0	0	1
Yates	0	<1	0	0	0	0	0



## **Section (e) Education and Training Work Activities Footnotes**

- 1 See footnote for Tables 9-11 in Section (c).

This page intentionally left blank

***Section (f)***

***Sanctions***

- Number of sanctions by type of sanction
- Average days until compliance
- Number and outcome of administrative hearings by issue

**Table 23: Monthly Average Number of Recipients in Sanction Status**  
**Total Public Assistance**  
**July 2024 - June 2025**

Local District	Employment		Child Support	Drug/Alcohol		Intentional Program Violation	Other		Total Non Durational / Durational		Grand Total
	Non Durational	Durational	Non Durational	Non Durational	Durational	Durational	Non Durational	Durational	Non Durational	Durational	
New York State	69	1,652	9,286	320	340	90	156	46	9,831	2,128	11,959
New York City	8	0	8,465	18	0	0	30	0	8,521	0	8,521
Rest of State	61	1,652	821	302	340	90	126	46	1,310	2,128	3,438
Albany	1	70	10	22	9	0	3	7	36	86	122
Allegany	0	6	0	0	1	2	1	0	1	9	10
Broome	6	33	56	17	24	29	1	5	80	91	171
Cattaraugus	5	28	41	8	5	2	0	1	54	36	90
Cayuga	1	68	4	6	6	3	4	0	15	77	92
Chautauqua	5	67	68	20	26	1	4	0	97	94	191
Chemung	0	14	3	4	6	3	0	0	7	23	30
Chenango	0	1	9	1	3	0	0	0	10	4	14
Clinton	0	26	7	3	1	0	0	1	10	28	38
Columbia	0	7	2	1	4	0	1	0	4	11	15
Cortland	0	13	3	2	4	1	0	0	5	18	23
Delaware	0	2	1	0	0	0	0	0	1	2	3
Dutchess	2	18	14	6	17	0	1	1	23	36	59
Erie	4	386	46	13	33	1	9	1	72	421	493
Essex	0	3	1	0	0	1	1	0	2	4	6
Franklin	0	12	6	2	1	0	3	1	11	14	25
Fulton	0	9	3	0	1	0	0	2	3	12	15
Genesee	0	4	0	4	4	0	0	0	4	8	12
Greene	0	5	0	0	4	0	0	0	0	9	9
Hamilton	0	0	0	0	0	0	0	0	0	0	0
Herkimer	2	13	1	1	3	0	4	1	8	17	25
Jefferson	1	44	10	6	13	3	8	0	25	60	85
Lewis	0	4	0	0	0	0	0	0	0	4	4
Livingston	1	9	2	4	5	0	0	0	7	14	21
Madison	0	4	0	0	1	0	1	0	1	5	6
Monroe	0	7	147	31	41	9	9	6	187	63	250
Montgomery	3	10	0	0	3	0	1	2	4	15	19
Nassau	3	120	12	3	6	2	7	0	25	128	153
Niagara	1	45	15	18	23	6	7	2	41	76	117
Oneida	0	27	20	0	2	3	4	1	24	33	57
Onondaga	1	58	104	16	5	5	17	0	138	68	206
Ontario	2	22	4	4	6	0	0	0	10	28	38
Orange	0	21	40	11	18	3	4	0	55	42	97
Orleans	1	14	5	3	1	3	0	3	9	21	30
Oswego	2	30	15	4	6	0	1	2	22	38	60
Otsego	0	3	0	1	0	0	0	0	1	3	4
Putnam	0	1	2	0	0	0	0	0	2	1	3
Rensselaer	1	32	7	0	1	0	0	0	8	33	41
Rockland	0	50	2	4	4	0	4	0	10	54	64
St. Lawrence	3	37	2	13	2	2	1	0	19	41	60
Saratoga	0	1	0	2	1	0	0	0	2	2	4
Schenectady	7	78	7	6	4	0	1	0	21	82	103
Schoharie	0	4	0	0	0	0	0	1	0	5	5
Schuyler	0	2	0	1	0	0	0	0	1	2	3
Seneca	0	6	0	1	1	0	0	0	1	7	8
Steuben	0	6	19	6	3	3	0	0	25	12	37
Suffolk	0	154	27	22	8	1	11	0	60	163	223
Sullivan	1	19	2	6	3	0	0	0	9	22	31
Tioga	0	1	0	4	3	0	0	0	4	4	8
Tompkins	7	12	28	10	7	0	1	2	46	21	67
Ulster	0	5	5	7	13	3	0	1	12	22	34
Warren	0	12	2	4	1	1	0	3	6	17	23
Washington	0	8	2	0	1	0	1	0	3	9	12
Wayne	0	6	2	1	2	0	2	0	5	8	13
Westchester	1	9	64	4	4	0	11	1	80	14	94
Wyoming	0	2	1	0	0	0	1	1	2	3	5
Yates	0	4	0	0	0	3	2	1	2	8	10

**Table 24: Monthly Average Number of Recipients in Sanction Status  
Temporary Assistance for Needy Families  
July 2024 - June 2025**

	Employment		Child Support	Drug/Alcohol		Intentional Program Violation	Other		Total Non Durational / Durational		Grand Total
	Non Durational	Durational	Non Durational	Non Durational	Durational	Durational	Non Durational	Durational	Non Durational	Durational	
Local District											
New York State	23	575	6,271	58	50	38	92	21	6,444	684	7,128
New York City	0	0	5,641	0	0	0	6	0	5,647	0	5,647
Rest of State	23	575	630	58	50	38	86	21	797	684	1,481
Albany	0	16	7	5	0	0	2	3	14	19	33
Allegany	0	3	0	0	0	0	0	0	0	3	3
Broome	2	9	40	4	3	14	1	1	47	27	74
Cattaraugus	3	12	35	0	1	1	0	0	38	14	52
Cayuga	1	24	3	1	2	1	4	0	9	27	36
Chautauqua	2	28	52	2	6	0	4	0	60	34	94
Chemung	0	5	3	0	1	1	0	0	3	7	10
Chenango	0	0	8	1	0	0	0	0	9	0	9
Clinton	0	11	5	0	0	0	0	0	5	11	16
Columbia	0	1	2	0	1	0	1	0	3	2	5
Cortland	0	3	3	0	0	1	0	0	3	4	7
Delaware	0	1	1	0	0	0	0	0	1	1	2
Dutchess	1	7	10	2	4	0	1	1	14	12	26
Erie	2	161	37	1	3	0	5	1	45	165	210
Essex	0	1	1	0	0	0	0	0	1	1	2
Franklin	0	3	5	0	0	0	2	1	7	4	11
Fulton	0	6	3	0	0	0	0	1	3	7	10
Genesee	0	1	0	2	2	0	0	0	2	3	5
Greene	0	1	0	0	1	0	0	0	0	2	2
Hamilton	0	0	0	0	0	0	0	0	0	0	0
Herkimer	0	3	1	0	0	0	2	1	3	4	7
Jefferson	0	13	8	0	2	1	3	0	11	16	27
Lewis	0	1	0	0	0	0	0	0	0	1	1
Livingston	0	4	1	1	1	0	0	0	2	5	7
Madison	0	1	0	0	0	0	0	0	0	1	1
Monroe	0	3	106	12	9	4	6	3	124	19	143
Montgomery	1	3	0	0	1	0	0	2	1	6	7
Nassau	0	39	9	1	0	1	7	0	17	40	57
Niagara	0	15	11	2	5	3	5	0	18	23	41
Oneida	0	4	15	0	0	2	2	1	17	7	24
Onondaga	1	18	78	2	0	2	8	0	89	20	109
Ontario	1	10	3	1	0	0	0	0	5	10	15
Orange	0	7	34	1	2	1	3	0	38	10	48
Orleans	1	6	4	2	0	2	0	0	7	8	15
Oswego	1	14	12	2	1	0	1	1	16	16	32
Otsego	0	1	0	0	0	0	0	0	0	1	1
Putnam	0	0	2	0	0	0	0	0	2	0	2
Rensselaer	0	9	4	0	0	0	0	0	4	9	13
Rockland	0	14	1	1	0	0	4	0	6	14	20
St. Lawrence	1	11	2	2	0	0	1	0	6	11	17
Saratoga	0	0	0	0	0	0	0	0	0	0	0
Schenectady	2	32	7	1	0	0	1	0	11	32	43
Schoharie	0	2	0	0	0	0	0	1	0	3	3
Schuyler	0	0	0	0	0	0	0	0	0	0	0
Seneca	0	2	0	0	0	0	0	0	0	2	2
Steuben	0	2	15	3	1	1	0	0	18	4	22
Suffolk	0	38	20	1	0	1	10	0	31	39	70
Sullivan	0	8	2	1	0	0	0	0	3	8	11
Tioga	0	1	0	1	1	0	0	0	1	2	3
Tompkins	4	5	23	3	2	0	1	1	31	8	39
Ulster	0	1	4	1	1	0	0	0	5	2	7
Warren	0	5	1	1	0	0	0	1	2	6	8
Washington	0	4	2	0	0	0	1	0	3	4	7
Wayne	0	3	2	0	0	0	1	0	3	3	6
Westchester	0	2	47	1	0	0	9	0	57	2	59
Wyoming	0	0	1	0	0	0	0	1	1	1	2
Yates	0	1	0	0	0	2	1	1	1	4	5

**Table 25: Monthly Average Number of Recipients in Sanction Status  
Safety Net MOE  
July 2024 - June 2025**

	Employment		Child Support	Drug/Alcohol		Intentional Program Violation	Other		Total Non Durational / Durational		Grand Total
	Non Durational	Durational	Non Durational	Non Durational	Durational	Durational	Non Durational	Durational	Non Durational	Durational	
Local District											
New York State	33	304	2,318	30	40	23	16	3	2,397	370	2,767
New York City	5	0	2,183	1	0	0	2	0	2,191	0	2,191
Rest of State	28	304	135	29	40	23	14	3	206	370	576
Albany	1	17	3	5	0	0	0	0	9	17	26
Allegany	0	0	0	0	0	0	0	0	0	0	0
Broome	4	15	12	4	2	8	0	0	20	25	45
Cattaraugus	2	3	1	0	0	1	0	0	3	4	7
Cayuga	0	12	1	0	2	2	0	0	1	16	17
Chautauqua	3	10	11	2	5	0	0	0	16	15	31
Chemung	0	1	0	0	0	0	0	0	0	1	1
Chenango	0	0	1	0	0	0	0	0	1	0	1
Clinton	0	2	1	0	0	0	0	0	1	2	3
Columbia	0	1	0	0	0	0	0	0	0	1	1
Cortland	0	1	0	0	0	0	0	0	0	1	1
Delaware	0	0	0	0	0	0	0	0	0	0	0
Dutchess	1	1	2	0	1	0	0	0	3	2	5
Erie	1	66	8	1	5	0	3	0	13	71	84
Essex	0	1	0	0	0	0	0	0	0	1	1
Franklin	0	1	1	0	0	0	0	0	1	1	2
Fulton	0	0	0	0	0	0	0	0	0	0	0
Genesee	0	2	0	0	0	0	0	0	0	2	2
Greene	0	0	0	0	1	0	0	0	0	1	1
Hamilton	0	0	0	0	0	0	0	0	0	0	0
Herkimer	2	2	0	0	0	0	0	0	2	2	4
Jefferson	1	9	1	0	1	1	2	0	4	11	15
Lewis	0	0	0	0	0	0	0	0	0	0	0
Livingston	0	2	1	0	0	0	0	0	1	2	3
Madison	0	1	0	0	0	0	0	0	0	1	1
Monroe	0	2	35	12	15	3	1	3	48	23	71
Montgomery	2	2	0	0	0	0	0	0	2	2	4
Nassau	2	40	3	0	0	1	0	0	5	41	46
Niagara	1	7	3	0	1	1	0	0	4	9	13
Oneida	0	3	4	0	0	0	1	0	5	3	8
Onondaga	0	14	16	0	0	1	4	0	20	15	35
Ontario	0	2	1	0	1	0	0	0	1	3	4
Orange	0	4	5	3	3	1	1	0	9	8	17
Orleans	0	0	0	0	0	0	0	0	0	0	0
Oswego	1	3	0	0	1	0	0	0	1	4	5
Otsego	0	0	0	0	0	0	0	0	0	0	0
Putnam	0	0	0	0	0	0	0	0	0	0	0
Rensselaer	1	13	3	0	0	0	0	0	4	13	17
Rockland	0	6	1	1	0	0	0	0	2	6	8
St. Lawrence	1	7	0	0	0	2	0	0	1	9	10
Saratoga	0	0	0	0	0	0	0	0	0	0	0
Schenectady	4	12	0	0	0	0	0	0	4	12	16
Schoharie	0	0	0	0	0	0	0	0	0	0	0
Schuyler	0	0	0	0	0	0	0	0	0	0	0
Seneca	0	1	0	0	0	0	0	0	0	1	1
Steuben	0	0	0	0	0	0	0	0	0	0	0
Suffolk	0	32	5	1	0	0	0	0	6	32	38
Sullivan	1	3	0	0	0	0	0	0	1	3	4
Tioga	0	0	0	0	0	0	0	0	0	0	0
Tompkins	0	0	1	0	1	0	0	0	1	1	2
Ulster	0	3	1	0	1	1	0	0	1	5	6
Warren	0	1	0	0	0	1	0	0	0	2	2
Washington	0	0	0	0	0	0	0	0	0	0	0
Wayne	0	0	0	0	0	0	0	0	0	0	0
Westchester	0	2	14	0	0	0	1	0	15	2	17
Wyoming	0	0	0	0	0	0	1	0	1	0	1
Yates	0	0	0	0	0	0	0	0	0	0	0

**Table 26: Monthly Average Number of Recipients in Sanction Status**  
**Safety Net Non-MOE**  
**July 2024 - June 2025**

Local District	Employment		Child Support	Drug/Alcohol		Intentional Program Violation	Other		Total Non Durational / Durational		Grand Total
	Non Durational	Durational	Non Durational	Non Durational	Durational	Durational	Non Durational	Durational	Non Durational	Durational	
New York State	13	773	697	232	250	29	48	22	990	1,074	2,064
New York City	3	0	641	17	0	0	22	0	683	0	683
Rest of State	10	773	56	215	250	29	26	22	307	1,074	1,381
Albany	0	37	0	12	9	0	1	4	13	50	63
Allegany	0	3	0	0	1	2	1	0	1	6	7
Broome	0	9	4	9	19	7	0	4	13	39	52
Cattaraugus	0	13	5	8	4	0	0	1	13	18	31
Cayuga	0	32	0	5	2	0	0	0	5	34	39
Chautauqua	0	29	5	16	15	1	0	0	21	45	66
Chemung	0	8	0	4	5	2	0	0	4	15	19
Chenango	0	1	0	0	3	0	0	0	0	4	4
Clinton	0	13	1	3	1	0	0	1	4	15	19
Columbia	0	5	0	1	3	0	0	0	1	8	9
Cortland	0	9	0	2	4	0	0	0	2	13	15
Delaware	0	1	0	0	0	0	0	0	0	1	1
Dutchess	0	10	2	4	12	0	0	0	6	22	28
Erie	1	159	1	11	25	1	1	0	14	185	199
Essex	0	1	0	0	0	1	1	0	1	2	3
Franklin	0	8	0	2	1	0	1	0	3	9	12
Fulton	0	3	0	0	1	0	0	1	0	5	5
Genesee	0	1	0	2	2	0	0	0	2	3	5
Greene	0	4	0	0	2	0	0	0	0	6	6
Hamilton	0	0	0	0	0	0	0	0	0	0	0
Herkimer	0	8	0	1	3	0	2	0	3	11	14
Jefferson	0	22	1	6	10	1	3	0	10	33	43
Lewis	0	3	0	0	0	0	0	0	0	3	3
Livingston	1	3	0	3	4	0	0	0	4	7	11
Madison	0	2	0	0	1	0	1	0	1	3	4
Monroe	0	2	6	7	17	2	2	0	15	21	36
Montgomery	0	5	0	0	2	0	1	0	1	7	8
Nassau	1	41	0	2	6	0	0	0	3	47	50
Niagara	0	23	1	16	17	2	2	2	19	44	63
Oneida	0	20	1	0	2	1	1	0	2	23	25
Onondaga	0	26	10	14	5	2	5	0	29	33	62
Ontario	1	10	0	3	5	0	0	0	4	15	19
Orange	0	10	1	7	13	1	0	0	8	24	32
Orleans	0	8	1	1	1	1	0	3	2	13	15
Oswego	0	13	3	2	4	0	0	1	5	18	23
Otsego	0	2	0	1	0	0	0	0	1	2	3
Putnam	0	1	0	0	0	0	0	0	0	1	1
Rensselaer	0	10	0	0	1	0	0	0	0	11	11
Rockland	0	30	0	2	4	0	0	0	2	34	36
St. Lawrence	1	19	0	11	2	0	0	0	12	21	33
Saratoga	0	1	0	2	1	0	0	0	2	2	4
Schenectady	1	34	0	5	4	0	0	0	6	38	44
Schoharie	0	2	0	0	0	0	0	0	0	2	2
Schuyler	0	2	0	1	0	0	0	0	1	2	3
Seneca	0	3	0	1	1	0	0	0	1	4	5
Steuben	0	4	4	3	2	2	0	0	7	8	15
Suffolk	0	84	2	20	8	0	1	0	23	92	115
Sullivan	0	8	0	5	3	0	0	0	5	11	16
Tioga	0	0	0	3	2	0	0	0	3	2	5
Tompkins	3	7	4	7	4	0	0	1	14	12	26
Ulster	0	1	0	6	11	2	0	1	6	15	21
Warren	0	6	1	3	1	0	0	2	4	9	13
Washington	0	4	0	0	1	0	0	0	0	5	5
Wayne	0	3	0	1	2	0	1	0	2	5	7
Westchester	1	5	3	3	4	0	1	1	8	10	18
Wyoming	0	2	0	0	0	0	0	0	0	2	2
Yates	0	3	0	0	0	1	1	0	1	4	5

**Table 27: Monthly Average Number of Sanctioned Recipients Complying and the Average Number of Days until Compliance**  
**Total Public Assistance**  
**July 2024 - June 2025**

Local District	Employment		Child Support		Drug/Alcohol		Intentional Program Violation		Other		Total Complied / Total Avg Days Until Compliance	
	Number Complied	Avg Days Until Compliance	Number Complied	Avg Days Until Compliance	Number Complied	Avg Days Until Compliance	Number Complied	Avg Days Until Compliance	Number Complied	Avg Days Until Compliance	Number Complied	Avg Days Until Compliance
New York State <sup>1</sup>	128	235	64	135	62	335	1	298	16	315	271	242
New York City <sup>1</sup>	0	0	-	-	3	2,865	0	0	3	1,161	6	1,898
Rest of State	128	235	64	135	59	240	1	298	13	177	265	208
Albany	3	103	<1	106	2	211	0	0	1	70	6	128
Allegany	1	87	<1	29	<1	41	0	0	<1	38	1	61
Broome	2	405	4	153	3	372	1	186	<1	39	10	252
Cattaraugus	2	86	2	166	2	312	<1	456	0	0	6	186
Cayuga	6	313	<1	89	1	93	<1	386	<1	86	7	251
Chautauqua	6	328	6	102	5	107	0	0	1	71	18	165
Chemung	1	88	1	23	1	146	<1	170	0	0	3	93
Chenango	<1	1,961	<1	88	<1	84	0	0	0	0	<1	427
Clinton	1	129	<1	62	1	36	0	0	0	0	2	90
Columbia	<1	679	<1	22	<1	91	0	0	<1	280	<1	301
Cortland	<1	48	<1	54	1	245	0	0	<1	117	1	111
Delaware	<1	375	0	0	0	0	0	0	0	0	<1	375
Dutchess	1	40	1	92	2	103	0	0	<1	22	4	80
Erie	47	147	5	250	8	359	0	0	3	461	63	194
Essex	<1	172	0	0	<1	41	0	0	<1	35	<1	96
Franklin	1	673	<1	412	1	393	0	0	<1	168	2	429
Fulton	<1	141	<1	70	<1	120	0	0	<1	292	<1	153
Genesee	<1	225	0	0	<1	115	0	0	0	0	<1	155
Greene	<1	7	0	0	<1	61	0	0	0	0	<1	50
Hamilton	0	0	0	0	0	0	0	0	<1	110	<1	110
Herkimer	<1	534	<1	17	<1	52	0	0	1	214	1	260
Jefferson	2	165	<1	127	1	194	<1	471	1	79	4	152
Lewis	<1	48	0	0	0	0	0	0	<1	1,509	<1	413
Livingston	<1	136	<1	287	1	33	0	0	<1	171	1	106
Madison	<1	106	0	0	0	0	0	0	<1	70	<1	82
Monroe	<1	2,013	13	111	9	396	<1	295	2	159	24	293
Montgomery	1	83	<1	40	<1	108	<1	305	<1	72	1	87
Nassau	4	272	<1	262	1	263	0	0	<1	320	5	271
Niagara	3	157	4	56	4	177	<1	147	2	203	13	139
Oneida	1	111	1	119	<1	61	0	0	<1	88	2	109
Onondaga	4	220	9	150	1	289	<1	82	2	103	16	173
Ontario	1	652	<1	43	1	218	0	0	<1	18	2	407
Orange	1	129	2	220	2	72	0	0	<1	98	5	131
Orleans	1	86	1	78	<1	3,008	<1	180	<1	79	2	437
Oswego	3	543	1	317	1	52	0	0	<1	128	5	359
Otsego	0	0	0	0	0	0	0	0	0	0	0	0
Putnam	<1	1,178	<1	90	0	0	0	0	0	0	<1	815
Rensselaer	2	465	<1	66	<1	179	0	0	0	0	2	346
Rockland	2	443	<1	40	1	59	0	0	<1	12	3	301
St. Lawrence	5	533	<1	53	1	299	<1	286	<1	44	6	427
Saratoga	0	0	0	0	0	0	0	0	0	0	0	0
Schenectady	5	180	1	101	<1	277	0	0	0	0	6	181
Schoharie	0	0	0	0	0	0	0	0	<1	34	<1	34
Schuyler	<1	192	0	0	0	0	0	0	0	0	<1	192
Seneca	<1	118	<1	9	<1	1,389	<1	3,347	0	0	<1	749
Steuben	<1	80	1	278	1	135	<1	365	0	0	2	176
Suffolk	17	104	5	119	3	157	<1	209	0	0	25	114
Sullivan	<1	268	0	0	<1	96	0	0	0	0	<1	174
Tioga	<1	2,605	0	0	<1	678	0	0	0	0	<1	953
Tompkins	2	75	1	107	3	48	0	0	<1	58	6	70
Ulster	<1	923	<1	320	1	597	<1	58	<1	18	1	509
Warren	1	157	<1	82	<1	70	0	0	<1	82	1	115
Washington	1	497	<1	237	<1	42	0	0	<1	174	1	288
Wayne	<1	27	<1	159	0	0	0	0	<1	243	<1	176
Westchester	1	1,790	6	128	1	220	0	0	<1	4,383	8	378
Wyoming	<1	190	0	0	0	0	0	0	<1	186	<1	187
Yates	<1	1,168	0	0	<1	21	0	0	<1	74	<1	343

1. New York City data to determine child support compliance is not available.



**Table 28: Monthly Average Number of Sanctioned Recipients Complying and the Average Number of Days until Compliance  
Temporary Assistance for Needy Families  
July 2024 - June 2025**

Local District	Employment		Child Support		Drug/Alcohol		Intentional Program Violation		Other		Total Complied / Total Avg Days Until Compliance	
	Number Complied	Avg Days Until Compliance	Number Complied	Avg Days Until Compliance	Number Complied	Avg Days Until Compliance	Number Complied	Avg Days Until Compliance	Number Complied	Avg Days Until Compliance	Number Complied	Avg Days Until Compliance
New York State <sup>1</sup>	73	176	52	127	10	105	1	404	8	268	144	163
New York City <sup>1</sup>	0	0	0	0	0	0	0	0	1	1,087	1	1,087
Rest of State	73	176	52	127	10	105	1	404	7	162	143	154
Albany	1	62	<1	106	1	88	0	0	1	83	3	78
Allegany	1	79	<1	29	<1	29	0	0	<1	25	1	60
Broome	1	155	3	126	1	53	1	246	<1	44	6	129
Cattaraugus	2	77	2	176	<1	121	0	0	0	0	4	132
Cayuga	3	433	<1	70	<1	33	<1	423	<1	150	3	349
Chautauqua	3	276	5	104	1	122	0	0	1	78	10	149
Chemung	1	69	1	25	<1	51	<1	159	0	0	2	55
Chenango	0	0	<1	87	0	0	0	0	0	0	<1	87
Clinton	1	134	<1	59	<1	61	0	0	0	0	1	116
Columbia	<1	16	<1	22	<1	201	0	0	<1	280	<1	124
Cortland	<1	21	<1	59	<1	30	0	0	<1	129	<1	53
Delaware	0	0	0	0	0	0	0	0	0	0	0	0
Dutchess	1	43	1	70	1	57	0	0	<1	26	3	53
Erie	28	128	4	185	1	391	0	0	2	364	35	152
Essex	<1	172	0	0	<1	86	0	0	<1	35	<1	127
Franklin	<1	484	<1	412	0	0	0	0	<1	255	<1	363
Fulton	<1	42	<1	70	<1	120	0	0	<1	292	<1	131
Genesee	<1	229	0	0	<1	212	0	0	0	0	<1	219
Greene	0	0	0	0	0	0	0	0	0	0	0	0
Hamilton	0	0	0	0	0	0	0	0	<1	110	<1	110
Herkimer	<1	467	<1	17	0	0	0	0	<1	97	<1	249
Jefferson	2	101	<1	107	<1	252	0	0	<1	85	2	109
Lewis	<1	31	0	0	0	0	0	0	0	0	<1	31
Livingston	<1	145	<1	12	<1	68	0	0	0	0	<1	101
Madison	0	0	0	0	0	0	0	0	<1	45	<1	45
Monroe	<1	2,603	10	108	3	105	<1	436	1	242	14	183
Montgomery	1	99	<1	45	<1	176	0	0	<1	97	1	104
Nassau	2	92	<1	148	<1	210	0	0	<1	357	2	113
Niagara	2	70	3	46	1	60	<1	155	1	234	7	84
Oneida	<1	110	1	106	0	0	0	0	<1	109	1	107
Onondaga	2	108	7	139	<1	24	0	0	1	105	10	129
Ontario	1	155	<1	51	<1	21	0	0	<1	5	1	107
Orange	1	149	2	202	<1	157	0	0	<1	121	3	178
Orleans	1	89	1	85	0	0	<1	180	<1	79	2	92
Oswego	2	383	1	345	1	35	0	0	<1	208	4	296
Otsego	0	0	0	0	0	0	0	0	0	0	0	0
Putnam	<1	7	<1	90	0	0	0	0	0	0	<1	49
Rensselaer	1	918	<1	48	0	0	0	0	0	0	1	583
Rockland	1	79	<1	40	<1	13	0	0	0	0	1	63
St. Lawrence	2	569	<1	59	<1	46	0	0	<1	44	2	435
Saratoga	0	0	0	0	0	0	0	0	0	0	0	0
Schenectady	2	108	1	105	<1	53	0	0	0	0	3	102
Schoharie	0	0	0	0	0	0	0	0	0	0	0	0
Schuyler	0	0	0	0	0	0	0	0	0	0	0	0
Seneca	<1	193	<1	9	0	0	<1	3,347	0	0	<1	787
Steuben	<1	92	1	305	<1	167	<1	365	0	0	1	220
Suffolk	8	75	4	129	<1	31	<1	209	0	0	12	93
Sullivan	<1	125	0	0	<1	67	0	0	0	0	<1	92
Tioga	0	0	0	0	0	0	0	0	0	0	0	0
Tompkins	1	73	1	90	<1	70	0	0	<1	77	2	81
Ulster	<1	219	<1	113	<1	49	0	0	0	0	<1	99
Warren	1	91	<1	82	<1	17	0	0	<1	81	1	84
Washington	1	562	<1	237	0	0	0	0	0	0	1	473
Wayne	<1	27	<1	159	0	0	0	0	<1	243	<1	176
Westchester	<1	1,935	4	146	<1	30	0	0	0	0	4	183
Wyoming	0	0	0	0	0	0	0	0	<1	59	<1	59
Yates	<1	3,319	0	0	0	0	0	0	<1	82	<1	729

1. New York City data to determine child support compliance is not available.

**Table 29: Monthly Average Number of Sanctioned Recipients Complying and the Average Number of Days until Compliance**  
**Safety Net MOE**  
**July 2024 - June 2025**

Local District	Employment		Child Support		Drug/Alcohol		Intentional Program Violation		Other		Total Complied / Total Avg Days Until Compliance	
	Number Complied	Avg Days Until Compliance	Number Complied	Avg Days Until Compliance	Number Complied	Avg Days Until Compliance	Number Complied	Avg Days Until Compliance	Number Complied	Avg Days Until Compliance	Number Complied	Avg Days Until Compliance
New York State <sup>1</sup>	25	155	12	150	4	106	<1	235	2	170	43	150
New York City <sup>1</sup>	0	0	0	0	0	0	0	0	<1	1,197	<1	1,197
Rest of State	25	155	12	150	4	106	<1	235	2	98	43	146
Albany	1	107	0	0	<1	158	0	0	<1	47	1	102
Allegany	0	0	0	0	0	0	0	0	<1	13	<1	13
Broome	1	367	1	215	<1	34	<1	105	<1	31	2	223
Cattaraugus	<1	111	<1	115	0	0	<1	456	0	0	<1	150
Cayuga	1	167	<1	121	<1	6	<1	368	0	0	1	163
Chautauqua	1	210	1	97	<1	53	0	0	<1	121	2	138
Chemung	<1	317	<1	16	0	0	0	0	0	0	<1	91
Chenango	0	0	<1	91	<1	66	0	0	0	0	<1	83
Clinton	<1	98	0	0	0	0	0	0	0	0	<1	98
Columbia	<1	27	0	0	<1	30	0	0	0	0	<1	29
Cortland	<1	39	0	0	0	0	0	0	<1	94	<1	53
Delaware	0	0	0	0	0	0	0	0	0	0	0	0
Dutchess	<1	28	0	0	<1	191	0	0	0	0	<1	82
Erie	10	127	1	288	1	114	0	0	1	83	13	134
Essex	0	0	0	0	0	0	0	0	0	0	0	0
Franklin	0	0	0	0	0	0	0	0	<1	14	<1	14
Fulton	0	0	0	0	0	0	0	0	0	0	0	0
Genesee	<1	221	0	0	0	0	0	0	0	0	<1	221
Greene	0	0	0	0	0	0	0	0	0	0	0	0
Hamilton	0	0	0	0	0	0	0	0	0	0	0	0
Herkimer	<1	558	0	0	0	0	0	0	<1	875	<1	717
Jefferson	<1	209	<1	247	<1	155	<1	471	<1	22	<1	151
Lewis	0	0	0	0	0	0	0	0	0	0	0	0
Livingston	<1	113	<1	446	0	0	0	0	<1	171	<1	289
Madison	0	0	0	0	0	0	0	0	<1	14	<1	14
Monroe	<1	424	3	116	3	105	<1	154	1	35	7	116
Montgomery	<1	40	<1	29	0	0	<1	305	0	0	<1	76
Nassau	1	197	<1	122	0	0	0	0	<1	282	1	198
Niagara	<1	110	1	78	<1	13	<1	103	<1	29	1	74
Oneida	1	128	<1	132	0	0	0	0	<1	284	1	141
Onondaga	1	216	2	201	<1	913	<1	82	0	0	3	221
Ontario	<1	178	<1	35	<1	90	0	0	<1	30	<1	109
Orange	<1	103	<1	292	<1	180	0	0	<1	121	<1	183
Orleans	0	0	<1	29	<1	51	0	0	0	0	<1	40
Oswego	<1	169	<1	119	<1	147	0	0	0	0	<1	153
Otsego	0	0	0	0	0	0	0	0	0	0	0	0
Putnam	0	0	0	0	0	0	0	0	0	0	0	0
Rensselaer	1	121	<1	110	0	0	0	0	0	0	1	118
Rockland	<1	107	0	0	0	0	0	0	0	0	<1	107
St. Lawrence	1	83	0	0	<1	58	<1	286	0	0	1	145
Saratoga	0	0	0	0	0	0	0	0	0	0	0	0
Schenectady	1	142	<1	69	0	0	0	0	0	0	1	138
Schoharie	0	0	0	0	0	0	0	0	<1	45	<1	45
Schuyler	0	0	0	0	0	0	0	0	0	0	0	0
Seneca	<1	73	0	0	0	0	0	0	0	0	<1	73
Steuben	0	0	0	0	0	0	0	0	0	0	0	0
Suffolk	5	140	1	90	<1	57	0	0	0	0	6	128
Sullivan	<1	483	0	0	0	0	0	0	0	0	<1	483
Tioga	0	0	0	0	<1	60	0	0	0	0	<1	60
Tompkins	<1	87	<1	148	<1	229	0	0	0	0	<1	141
Ulster	<1	1,275	<1	458	0	0	0	0	0	0	<1	785
Warren	<1	28	0	0	0	0	0	0	<1	120	<1	74
Washington	0	0	0	0	<1	30	0	0	<1	333	<1	232
Wayne	0	0	0	0	0	0	0	0	0	0	0	0
Westchester	<1	45	2	103	<1	46	0	0	0	0	2	93
Wyoming	0	0	0	0	0	0	0	0	0	0	0	0
Yates	0	0	0	0	0	0	0	0	0	0	0	0

1. New York City data to determine child support compliance is not available.

**Table 30: Monthly Average Number of Sanctioned Recipients Complying and the Average Number of Days until Compliance**  
**Safety Net Non-MOE**  
**July 2024 - June 2025**

Local District	Employment		Child Support		Drug/Alcohol		Intentional Program Violation		Other		Total Complied / Total Avg Days Until Compliance	
	Number Complied	Avg Days Until Compliance	Number Complied	Avg Days Until Compliance	Number Complied	Avg Days Until Compliance	Number Complied	Avg Days Until Compliance	Number Complied	Avg Days Until Compliance	Number Complied	Avg Days Until Compliance
New York State <sup>1</sup>	30	427	<1	200	48	427	<1	124	6	464	84	420
New York City <sup>1</sup>	0	0	0	0	3	2,865	0	0	2	1,219	5	2,213
Rest of State	30	427	<1	200	45	297	<1	124	4	249	79	337
Albany	1	131	0	0	1	303	0	0	<1	28	2	203
Allegany	<1	143	0	0	<1	44	0	0	<1	90	<1	73
Broome	<1	1,759	<1	209	2	550	<1	139	0	0	2	583
Cattaraugus	<1	90	<1	30	2	347	0	0	0	0	2	297
Cayuga	2	197	0	0	1	128	0	0	<1	21	3	170
Chautauqua	2	513	<1	67	4	108	0	0	<1	9	6	204
Chemung	<1	72	<1	31	1	164	<1	176	0	0	1	141
Chenango	<1	1,961	0	0	<1	90	0	0	0	0	<1	838
Clinton	<1	136	<1	64	1	34	0	0	0	0	1	63
Columbia	<1	1,008	0	0	<1	59	0	0	0	0	<1	481
Cortland	<1	88	<1	29	1	275	0	0	0	0	1	192
Delaware	<1	375	0	0	0	0	0	0	0	0	<1	375
Dutchess	0	0	<1	143	1	130	0	0	<1	14	1	126
Erie	9	233	<1	1,725	6	381	0	0	<1	5,151	15	337
Essex	0	0	0	0	<1	18	0	0	0	0	<1	18
Franklin	1	727	0	0	1	393	0	0	<1	71	2	493
Fulton	<1	239	0	0	0	0	0	0	0	0	<1	239
Genesee	0	0	0	0	<1	43	0	0	0	0	<1	43
Greene	<1	7	0	0	<1	61	0	0	0	0	<1	50
Hamilton	0	0	0	0	0	0	0	0	0	0	0	0
Herkimer	<1	725	0	0	<1	52	0	0	1	194	1	215
Jefferson	<1	408	0	0	1	192	0	0	1	108	2	197
Lewis	<1	83	0	0	0	0	0	0	<1	1,509	<1	796
Livingston	0	0	<1	84	1	21	0	0	0	0	1	26
Madison	<1	106	0	0	0	0	0	0	<1	110	<1	108
Monroe	<1	2,615	<1	136	3	940	0	0	<1	178	3	999
Montgomery	<1	104	0	0	<1	7	0	0	<1	9	<1	40
Nassau	1	597	<1	975	1	268	0	0	0	0	2	477
Niagara	1	305	<1	106	3	229	0	0	1	183	5	240
Oneida	<1	85	<1	153	<1	61	0	0	<1	11	<1	75
Onondaga	1	389	<1	70	1	268	0	0	1	100	3	254
Ontario	<1	1,961	0	0	1	325	0	0	0	0	1	1,026
Orange	<1	100	0	0	2	28	0	0	<1	29	2	36
Orleans	<1	76	0	0	<1	4,487	0	0	0	0	<1	1,840
Oswego	1	1,186	0	0	<1	42	0	0	<1	47	1	614
Otsego	0	0	0	0	0	0	0	0	0	0	0	0
Putnam	<1	2,349	0	0	0	0	0	0	0	0	<1	2,349
Rensselaer	<1	59	0	0	<1	179	0	0	0	0	<1	89
Rockland	1	756	0	0	1	69	0	0	<1	12	2	463
St. Lawrence	2	723	<1	30	1	348	0	0	0	0	3	547
Saratoga	0	0	0	0	0	0	0	0	0	0	0	0
Schenectady	2	284	0	0	<1	411	0	0	0	0	2	309
Schoharie	0	0	0	0	0	0	0	0	<1	23	<1	23
Schuyler	<1	192	0	0	0	0	0	0	0	0	<1	192
Seneca	<1	27	0	0	<1	1,389	0	0	0	0	<1	1,116
Steuben	<1	53	<1	30	1	115	0	0	0	0	1	96
Suffolk	4	116	<1	29	3	169	0	0	0	0	7	137
Sullivan	0	0	0	0	<1	156	0	0	0	0	<1	156
Tioga	<1	2,605	0	0	<1	987	0	0	0	0	<1	1,311
Tompkins	1	75	<1	147	3	39	0	0	<1	10	4	51
Ulster	0	0	0	0	1	707	<1	58	<1	18	1	566
Warren	<1	1,001	0	0	<1	97	0	0	<1	66	<1	265
Washington	<1	237	0	0	<1	44	0	0	<1	16	<1	81
Wayne	0	0	0	0	0	0	0	0	0	0	0	0
Westchester	1	2,517	<1	68	1	246	0	0	<1	4,383	2	989
Wyoming	<1	190	0	0	0	0	0	0	<1	377	<1	284
Yates	<1	93	0	0	<1	21	0	0	<1	67	<1	68

1. New York City data to determine child support compliance is not available.

**Table 31: Administrative Hearings - Hearings Requested**  
**Total Public Assistance**  
**July 2024 - June 2025**

Local District	Work Activities Related					
	Sanction Related			Work Supportive Services	Work Exemptions	
	Eligibility	Drug/ Alcohol	Work General		Disability Screening Exemptions	Other Work Exemptions
New York State	1,347	537	1,250	820	953	457
New York City	1,256	29	274	759	697	416
Rest of State	91	508	976	61	256	41
Albany	0	14	23	2	10	2
Allegany	0	0	3	0	1	0
Broome	11	42	17	0	5	0
Cattaraugus	0	3	2	0	1	0
Cayuga	0	5	12	0	2	1
Chautauqua	3	22	10	0	1	0
Chemung	2	8	15	0	0	0
Chenango	0	4	1	0	0	0
Clinton	0	3	3	0	1	0
Columbia	0	4	2	0	0	0
Cortland	0	7	3	0	1	0
Delaware	0	0	0	0	1	0
Dutchess	4	9	18	0	2	0
Erie	3	23	82	5	24	1
Essex	0	0	0	0	0	0
Franklin	0	1	5	0	1	0
Fulton	0	0	1	0	0	0
Genesee	0	3	4	0	2	0
Greene	0	9	4	0	1	1
Hamilton	0	0	0	0	0	0
Herkimer	0	3	6	0	0	0
Jefferson	1	44	27	0	0	1
Lewis	0	0	0	0	1	0
Livingston	1	4	1	0	1	0
Madison	0	0	1	0	1	0
Monroe	35	118	15	37	46	3
Montgomery	1	1	4	0	0	0
Nassau	6	6	96	4	24	6
Niagara	1	32	23	1	1	2
Oneida	0	6	17	0	4	0
Onondaga	2	1	19	0	26	4
Ontario	0	3	9	1	0	1
Orange	1	13	14	3	5	0
Orleans	0	0	2	0	1	0
Oswego	0	1	6	0	2	0
Otsego	0	0	4	0	0	0
Putnam	0	0	3	0	0	0
Rensselaer	1	0	17	1	0	0
Rockland	0	2	10	0	0	0
St. Lawrence	0	0	45	0	4	0
Saratoga	0	0	1	0	2	0
Schenectady	1	5	44	0	5	0
Schoharie	0	0	1	0	0	0
Schuyler	0	0	2	0	1	0
Seneca	0	0	0	0	0	0
Steuben	1	5	6	0	0	0
Suffolk	6	71	342	4	62	14
Sullivan	0	8	12	0	0	0
Tioga	0	1	0	0	0	0
Tompkins	0	7	14	1	2	1
Ulster	2	5	3	0	2	2
Warren	1	1	6	0	0	0
Washington	1	3	3	0	1	0
Wayne	0	1	0	0	1	0
Westchester	7	10	12	2	11	2
Wyoming	0	0	1	0	0	0
Yates	0	0	5	0	0	0

**Table 32: Administrative Hearings - Hearings Held**  
**Total Public Assistance**  
**July 2024 - June 2025**

Local District	Work Activities Related					
	Sanction Related			Work Supportive Services	Work Exemptions	
	Eligibility	Drug/ Alcohol	Work General		Disability Screening Exemptions	Other Work Exemptions
New York State	892	351	1,164	519	480	197
New York City	841	16	185	505	337	178
Rest of State	51	335	979	14	143	19
Albany	0	0	1	0	0	0
Allegany	0	0	0	0	0	0
Broome	0	10	2	0	2	0
Cattaraugus	0	1	0	0	0	0
Cayuga	0	2	4	0	0	0
Chautauqua	2	7	12	0	0	0
Chemung	0	5	2	0	0	0
Chenango	0	0	0	0	0	0
Clinton	0	0	0	0	0	0
Columbia	0	1	0	0	0	0
Cortland	0	0	1	0	1	0
Delaware	0	0	0	0	0	0
Dutchess	0	4	7	0	0	1
Erie	0	25	27	3	4	0
Essex	0	0	2	0	0	0
Franklin	0	0	0	0	0	0
Fulton	0	0	0	0	0	0
Genesee	0	1	2	0	0	0
Greene	0	1	0	0	0	0
Hamilton	0	0	0	0	0	0
Herkimer	0	1	3	0	0	0
Jefferson	0	35	25	0	3	0
Lewis	0	0	0	0	0	0
Livingston	0	0	0	0	0	0
Madison	0	0	0	0	0	0
Monroe	23	85	3	8	1	0
Montgomery	0	0	3	0	0	1
Nassau	0	0	23	0	1	0
Niagara	2	24	39	0	6	0
Oneida	0	0	6	0	2	0
Onondaga	1	0	9	0	13	1
Ontario	0	0	0	0	0	0
Orange	4	9	10	1	6	0
Orleans	0	0	1	0	0	0
Oswego	0	0	3	0	0	0
Otsego	0	0	0	0	0	0
Putnam	0	0	1	0	0	0
Rensselaer	1	2	9	0	0	0
Rockland	0	0	1	0	0	0
St. Lawrence	1	1	54	0	1	0
Saratoga	0	0	1	0	0	0
Schenectady	0	2	7	0	1	0
Schoharie	0	0	0	0	0	0
Schuyler	0	0	0	0	0	0
Seneca	0	0	0	0	0	0
Steuben	0	0	2	0	0	0
Suffolk	2	65	690	2	72	14
Sullivan	0	0	2	0	0	0
Tioga	0	0	0	0	0	0
Tompkins	1	2	2	0	1	0
Ulster	0	1	1	0	0	0
Warren	0	1	0	0	0	0
Washington	0	1	0	0	0	0
Wayne	0	0	0	0	0	0
Westchester	14	49	24	0	29	2
Wyoming	0	0	0	0	0	0
Yates	0	0	0	0	0	0

**Table 33: Administrative Hearings - Issues Affirmed**  
**Total Public Assistance**  
**July 2024 - June 2025**

Local District	Work Activities Related					
	Sanction Related			Work Supportive Services	Work Exemptions	
	Eligibility	Drug/ Alcohol	Work General		Disability Screening Exemptions	Other Work Exemptions
New York State	15	22	63	7	11	0
New York City	13	0	0	3	2	0
Rest of State	2	22	63	4	9	0
Albany	0	0	0	0	1	0
Allegany	0	0	1	0	0	0
Broome	0	1	0	0	0	0
Cattaraugus	0	0	0	0	0	0
Cayuga	0	0	3	0	0	0
Chautauqua	0	0	1	0	0	0
Chemung	0	1	0	0	0	0
Chenango	0	0	0	0	0	0
Clinton	0	0	0	0	0	0
Columbia	0	0	0	0	0	0
Cortland	0	0	0	0	0	0
Delaware	0	0	0	0	0	0
Dutchess	0	0	3	0	0	0
Erie	0	1	6	2	1	0
Essex	0	1	0	0	0	0
Franklin	0	0	0	0	0	0
Fulton	0	0	0	0	0	0
Genesee	0	0	0	0	0	0
Greene	0	0	0	0	0	0
Hamilton	0	0	0	0	0	0
Herkimer	0	0	0	0	0	0
Jefferson	0	5	1	0	0	0
Lewis	0	0	0	0	0	0
Livingston	0	0	0	0	0	0
Madison	0	0	0	0	0	0
Monroe	1	2	0	0	0	0
Montgomery	0	0	0	0	0	0
Nassau	0	0	14	0	0	0
Niagara	0	2	3	0	0	0
Oneida	0	0	1	0	1	0
Onondaga	0	0	1	0	2	0
Ontario	0	1	0	0	0	0
Orange	1	1	2	1	0	0
Orleans	0	0	0	0	0	0
Oswego	0	0	0	0	0	0
Otsego	0	0	0	0	0	0
Putnam	0	0	0	0	0	0
Rensselaer	0	0	3	0	0	0
Rockland	0	0	0	0	0	0
St. Lawrence	0	0	4	0	0	0
Saratoga	0	0	0	0	0	0
Schenectady	0	0	3	0	1	0
Schoharie	0	0	0	0	0	0
Schuyler	0	0	0	0	0	0
Seneca	0	0	0	0	0	0
Steuben	0	0	0	0	0	0
Suffolk	0	2	16	1	3	0
Sullivan	0	0	0	0	0	0
Tioga	0	0	0	0	0	0
Tompkins	0	1	0	0	0	0
Ulster	0	1	0	0	0	0
Warren	0	1	0	0	0	0
Washington	0	1	0	0	0	0
Wayne	0	0	0	0	0	0
Westchester	0	1	1	0	0	0
Wyoming	0	0	0	0	0	0
Yates	0	0	0	0	0	0

**Table 34: Administrative Hearings - Issues Reversed**  
**Total Public Assistance**  
**July 2024 - June 2025**

Local District	Work Activities Related					
	Sanction Related			Work Supportive Services	Work Exemptions	
	Eligibility	Drug/ Alcohol	Work General		Disability Screening Exemptions	Other Work Exemptions
New York State	45	9	37	18	5	1
New York City	42	0	0	17	2	1
Rest of State	3	9	37	1	3	0
Albany	0	0	0	0	0	0
Allegany	0	0	0	0	0	0
Broome	0	0	0	0	0	0
Cattaraugus	0	1	0	0	0	0
Cayuga	0	1	1	0	0	0
Chautauqua	1	0	0	0	0	0
Chemung	0	0	0	0	0	0
Chenango	0	1	0	0	0	0
Clinton	0	0	0	0	0	0
Columbia	0	1	0	0	0	0
Cortland	0	0	0	0	0	0
Delaware	0	0	0	0	0	0
Dutchess	0	0	3	0	1	0
Erie	0	0	5	1	1	0
Essex	0	0	0	0	0	0
Franklin	0	0	0	0	0	0
Fulton	0	0	0	0	0	0
Genesee	0	0	0	0	0	0
Greene	0	1	0	0	0	0
Hamilton	0	0	0	0	0	0
Herkimer	0	0	2	0	0	0
Jefferson	0	1	0	0	0	0
Lewis	0	0	0	0	0	0
Livingston	0	0	0	0	0	0
Madison	0	0	0	0	0	0
Monroe	0	1	0	0	0	0
Montgomery	0	0	0	0	0	0
Nassau	0	0	6	0	0	0
Niagara	0	0	1	0	0	0
Oneida	0	1	1	0	0	0
Onondaga	0	0	0	0	1	0
Ontario	0	0	0	0	0	0
Orange	1	1	2	0	0	0
Orleans	0	0	0	0	0	0
Oswego	0	0	1	0	0	0
Otsego	0	0	0	0	0	0
Putnam	0	0	1	0	0	0
Rensselaer	0	0	5	0	0	0
Rockland	0	0	0	0	0	0
St. Lawrence	0	0	0	0	0	0
Saratoga	0	0	1	0	0	0
Schenectady	0	0	0	0	0	0
Schoharie	0	0	0	0	0	0
Schuyler	0	0	0	0	0	0
Seneca	0	0	0	0	0	0
Steuben	0	0	1	0	0	0
Suffolk	0	0	6	0	0	0
Sullivan	0	0	1	0	0	0
Tioga	0	0	0	0	0	0
Tompkins	0	0	0	0	0	0
Ulster	0	0	0	0	0	0
Warren	0	0	0	0	0	0
Washington	0	0	0	0	0	0
Wayne	0	0	0	0	0	0
Westchester	1	0	0	0	0	0
Wyoming	0	0	0	0	0	0
Yates	0	0	0	0	0	0

**Table 35: Administrative Hearings - Issues Withdrawn**  
**Total Public Assistance**  
**July 2024 - June 2025**

Local District	Work Activities Related					
	Sanction Related			Work Supportive Services	Work Exemptions	
	Eligibility	Drug/ Alcohol	Work General		Disability Screening Exemptions	Other Work Exemptions
New York State	4	8	41	16	7	0
New York City	2	0	1	16	0	0
Rest of State	2	8	40	0	7	0
Albany	0	0	1	0	0	0
Allegany	0	0	0	0	0	0
Broome	0	0	1	0	0	0
Cattaraugus	0	0	0	0	0	0
Cayuga	0	1	0	0	0	0
Chautauqua	0	0	0	0	0	0
Chemung	0	0	0	0	0	0
Chenango	0	0	0	0	0	0
Clinton	0	0	0	0	0	0
Columbia	0	0	0	0	0	0
Cortland	0	0	0	0	0	0
Delaware	0	0	0	0	0	0
Dutchess	0	0	0	0	0	0
Erie	0	0	2	0	0	0
Essex	0	0	0	0	0	0
Franklin	0	0	0	0	0	0
Fulton	0	0	0	0	0	0
Genesee	0	0	0	0	0	0
Greene	0	0	0	0	0	0
Hamilton	0	0	0	0	0	0
Herkimer	0	0	0	0	0	0
Jefferson	0	0	0	0	0	0
Lewis	0	0	0	0	0	0
Livingston	0	0	0	0	0	0
Madison	0	0	0	0	0	0
Monroe	2	4	0	0	0	0
Montgomery	0	0	0	0	0	0
Nassau	0	0	4	0	1	0
Niagara	0	1	4	0	0	0
Oneida	0	0	0	0	0	0
Onondaga	0	0	1	0	0	0
Ontario	0	0	0	0	0	0
Orange	0	0	1	0	1	0
Orleans	0	0	0	0	0	0
Oswego	0	0	0	0	0	0
Otsego	0	0	1	0	0	0
Putnam	0	0	0	0	0	0
Rensselaer	0	0	0	0	0	0
Rockland	0	0	0	0	0	0
St. Lawrence	0	0	0	0	0	0
Saratoga	0	0	0	0	0	0
Schenectady	0	0	1	0	0	0
Schoharie	0	0	0	0	0	0
Schuyler	0	0	0	0	0	0
Seneca	0	0	0	0	0	0
Steuben	0	0	0	0	0	0
Suffolk	0	1	23	0	5	0
Sullivan	0	0	0	0	0	0
Tioga	0	0	0	0	0	0
Tompkins	0	1	0	0	0	0
Ulster	0	0	1	0	0	0
Warren	0	0	0	0	0	0
Washington	0	0	0	0	0	0
Wayne	0	0	0	0	0	0
Westchester	0	0	0	0	0	0
Wyoming	0	0	0	0	0	0
Yates	0	0	0	0	0	0



**Table 36: Administrative Hearings - Agency Correct When Made  
Total Public Assistance  
July 2024 - June 2025**

Local District	Work Activities Related					
	Sanction Related			Work Supportive Services	Work Exemptions	
	Eligibility	Drug/ Alcohol	Work General		Disability Screening Exemptions	Other Work Exemptions
New York State	7	4	13	1	0	0
New York City	7	0	0	1	0	0
Rest of State	0	4	13	0	0	0
Albany	0	0	0	0	0	0
Allegany	0	0	0	0	0	0
Broome	0	0	0	0	0	0
Cattaraugus	0	0	0	0	0	0
Cayuga	0	0	0	0	0	0
Chautauqua	0	0	0	0	0	0
Chemung	0	0	1	0	0	0
Chenango	0	0	0	0	0	0
Clinton	0	0	0	0	0	0
Columbia	0	0	0	0	0	0
Cortland	0	0	1	0	0	0
Delaware	0	0	0	0	0	0
Dutchess	0	0	0	0	0	0
Erie	0	0	3	0	0	0
Essex	0	0	0	0	0	0
Franklin	0	0	0	0	0	0
Fulton	0	0	0	0	0	0
Genesee	0	0	0	0	0	0
Greene	0	0	0	0	0	0
Hamilton	0	0	0	0	0	0
Herkimer	0	0	0	0	0	0
Jefferson	0	1	0	0	0	0
Lewis	0	0	1	0	0	0
Livingston	0	0	0	0	0	0
Madison	0	0	0	0	0	0
Monroe	0	1	1	0	0	0
Montgomery	0	0	0	0	0	0
Nassau	0	0	2	0	0	0
Niagara	0	0	1	0	0	0
Oneida	0	0	0	0	0	0
Onondaga	0	0	0	0	0	0
Ontario	0	0	0	0	0	0
Orange	0	1	0	0	0	0
Orleans	0	0	0	0	0	0
Oswego	0	0	0	0	0	0
Otsego	0	0	0	0	0	0
Putnam	0	0	0	0	0	0
Rensselaer	0	0	0	0	0	0
Rockland	0	0	0	0	0	0
St. Lawrence	0	0	1	0	0	0
Saratoga	0	0	0	0	0	0
Schenectady	0	1	0	0	0	0
Schoharie	0	0	0	0	0	0
Schuyler	0	0	0	0	0	0
Seneca	0	0	0	0	0	0
Steuben	0	0	0	0	0	0
Suffolk	0	0	2	0	0	0
Sullivan	0	0	0	0	0	0
Tioga	0	0	0	0	0	0
Tompkins	0	0	0	0	0	0
Ulster	0	0	0	0	0	0
Warren	0	0	0	0	0	0
Washington	0	0	0	0	0	0
Wayne	0	0	0	0	0	0
Westchester	0	0	0	0	0	0
Wyoming	0	0	0	0	0	0
Yates	0	0	0	0	0	0

**Table 37: Administrative Hearings - Agency Settled**  
**Total Public Assistance**  
**July 2024 - June 2025**

Local District	Work Activities Related					
	Sanction Related			Work Supportive Services	Work Exemptions	
	Eligibility	Drug/ Alcohol	Work General		Disability Screening Exemptions	Other Work Exemptions
New York State	808	302	1,004	475	452	194
New York City	768	16	183	465	333	175
Rest of State	40	286	821	10	119	19
Albany	0	0	0	0	0	0
Allegany	0	0	0	0	0	0
Broome	0	6	1	0	2	0
Cattaraugus	0	0	0	0	0	0
Cayuga	0	0	0	0	0	0
Chautauqua	1	7	11	0	0	0
Chemung	0	4	1	0	0	0
Chenango	0	0	0	0	0	0
Clinton	0	0	0	0	0	0
Columbia	0	0	0	0	0	0
Cortland	0	0	0	0	0	0
Delaware	0	0	0	0	0	0
Dutchess	0	4	3	0	0	1
Erie	0	23	13	0	2	0
Essex	0	0	2	0	0	0
Franklin	0	0	0	0	0	0
Fulton	0	0	0	0	0	0
Genesee	0	1	1	0	0	0
Greene	0	0	0	0	0	0
Hamilton	0	0	0	0	0	0
Herkimer	0	0	0	0	0	0
Jefferson	0	26	22	0	3	0
Lewis	0	0	0	0	0	0
Livingston	0	0	0	0	0	0
Madison	0	0	0	0	0	0
Monroe	18	74	2	8	1	0
Montgomery	0	0	3	0	0	1
Nassau	0	0	0	0	0	0
Niagara	2	20	28	0	5	0
Oneida	0	0	4	0	1	0
Onondaga	0	0	7	0	7	1
Ontario	0	0	0	0	0	0
Orange	2	6	2	0	5	0
Orleans	0	0	0	0	0	0
Oswego	0	0	2	0	0	0
Otsego	0	0	0	0	0	0
Putnam	0	0	0	0	0	0
Rensselaer	0	2	3	0	0	0
Rockland	0	0	0	0	0	0
St. Lawrence	1	1	50	0	1	0
Saratoga	0	0	0	0	0	0
Schenectady	0	1	1	0	0	0
Schoharie	0	0	0	0	0	0
Schuyler	0	0	0	0	0	0
Seneca	0	0	0	0	0	0
Steuben	0	0	0	0	0	0
Suffolk	2	62	640	2	62	14
Sullivan	0	0	1	0	0	0
Tioga	0	0	0	0	0	0
Tompkins	1	1	2	0	1	0
Ulster	0	0	0	0	0	0
Warren	0	0	0	0	0	0
Washington	0	0	0	0	0	0
Wayne	0	0	0	0	0	0
Westchester	13	48	22	0	29	2
Wyoming	0	0	0	0	0	0
Yates	0	0	0	0	0	0

**Table 38: Administrative Hearings - Other Disposition**  
**Total Public Assistance**  
**July 2024 - June 2025**

	Work Activities Related					
	Sanction Related			Work Supportive Services	Work Exemptions	
	Eligibility	Drug/ Alcohol	Work General		Disability Screening Exemptions	Other Work Exemptions
Local District						
New York State	16	5	13	8	6	1
New York City	14	0	2	8	1	1
Rest of State	2	5	11	0	5	0
Albany	0	0	0	0	0	0
Allegany	0	0	0	0	0	0
Broome	0	1	0	0	0	0
Cattaraugus	0	0	0	0	0	0
Cayuga	0	0	1	0	0	0
Chautauqua	0	0	0	0	0	0
Chemung	0	0	1	0	0	0
Chenango	0	0	0	0	0	0
Clinton	0	0	0	0	0	0
Columbia	0	0	0	0	0	0
Cortland	0	0	0	0	1	0
Delaware	0	0	0	0	0	0
Dutchess	0	0	0	0	0	0
Erie	0	1	2	0	0	0
Essex	0	0	0	0	0	0
Franklin	0	0	0	0	0	0
Fulton	0	0	0	0	0	0
Genesee	0	0	1	0	0	0
Greene	0	0	0	0	0	0
Hamilton	0	0	0	0	0	0
Herkimer	0	0	0	0	0	0
Jefferson	0	2	0	0	0	0
Lewis	0	0	0	0	0	0
Livingston	0	0	0	0	0	0
Madison	0	0	0	0	0	0
Monroe	1	0	0	0	0	0
Montgomery	0	0	0	0	0	0
Nassau	0	0	0	0	0	0
Niagara	0	1	1	0	1	0
Oneida	0	0	0	0	0	0
Onondaga	1	0	0	0	2	0
Ontario	0	0	0	0	0	0
Orange	0	0	0	0	0	0
Orleans	0	0	0	0	0	0
Oswego	0	0	0	0	0	0
Otsego	0	0	0	0	0	0
Putnam	0	0	0	0	0	0
Rensselaer	0	0	0	0	0	0
Rockland	0	0	0	0	0	0
St. Lawrence	0	0	0	0	0	0
Saratoga	0	0	0	0	0	0
Schenectady	0	0	1	0	0	0
Schoharie	0	0	0	0	0	0
Schuyler	0	0	0	0	0	0
Seneca	0	0	0	0	0	0
Steuben	0	0	0	0	0	0
Suffolk	0	0	3	0	1	0
Sullivan	0	0	0	0	0	0
Tioga	0	0	0	0	0	0
Tompkins	0	0	0	0	0	0
Ulster	0	0	0	0	0	0
Warren	0	0	0	0	0	0
Washington	0	0	0	0	0	0
Wayne	0	0	0	0	0	0
Westchester	0	0	1	0	0	0
Wyoming	0	0	0	0	0	0
Yates	0	0	0	0	0	0

**Table 39: Administrative Disqualification Hearings  
Eligibility Hearings Requested and Dispositions  
July 2024 - June 2025**

Local District	Hearings Requested	Hearings Held	Issues Affirmed	Issues Reversed	Issues Withdrawn	Agency Correct When Made	Agency Settled	Other Disposition
New York State	180	188	210	22	6	2	2	0
New York City	19	19	23	2	2	0	0	0
Rest of State	161	169	187	20	4	2	2	0
Albany	0	0	0	0	0	0	0	0
Allegany	0	0	0	0	0	0	0	0
Broome	0	0	0	0	0	0	0	0
Cattaraugus	0	0	0	0	0	0	0	0
Cayuga	0	0	1	0	0	0	0	0
Chautauqua	0	0	0	0	0	0	0	0
Chemung	0	0	0	0	0	0	0	0
Chenango	0	0	0	0	0	0	0	0
Clinton	0	0	0	0	0	0	0	0
Columbia	0	0	0	0	0	0	0	0
Cortland	0	0	0	0	0	0	0	0
Delaware	0	0	0	0	0	0	0	0
Dutchess	0	2	4	2	0	0	0	0
Erie	0	21	23	2	0	0	0	0
Essex	0	0	0	0	0	0	0	0
Franklin	0	0	0	0	0	0	0	0
Fulton	0	0	0	0	0	0	0	0
Genesee	0	0	0	0	0	0	0	0
Greene	0	0	0	0	0	0	0	0
Hamilton	0	0	0	0	0	0	0	0
Herkimer	0	0	0	0	0	0	0	0
Jefferson	0	0	0	0	0	0	0	0
Lewis	0	0	0	0	0	0	0	0
Livingston	0	0	0	0	0	0	0	0
Madison	0	0	0	0	0	0	0	0
Monroe	77	69	78	8	2	0	2	0
Montgomery	0	0	0	0	0	0	0	0
Nassau	65	36	31	3	2	2	0	0
Niagara	0	0	0	0	0	0	0	0
Oneida	0	0	0	0	0	0	0	0
Onondaga	19	30	33	3	0	0	0	0
Ontario	0	0	0	0	0	0	0	0
Orange	0	0	0	0	0	0	0	0
Orleans	0	0	0	0	0	0	0	0
Oswego	0	0	0	0	0	0	0	0
Otsego	0	0	0	0	0	0	0	0
Putnam	0	0	0	0	0	0	0	0
Rensselaer	0	2	2	0	0	0	0	0
Rockland	0	0	0	0	0	0	0	0
St. Lawrence	0	0	0	0	0	0	0	0
Saratoga	0	0	0	0	0	0	0	0
Schenectady	0	0	0	0	0	0	0	0
Schoharie	0	0	0	0	0	0	0	0
Schuyler	0	0	0	0	0	0	0	0
Seneca	0	0	0	0	0	0	0	0
Steuben	0	0	0	0	0	0	0	0
Suffolk	0	9	15	2	0	0	0	0
Sullivan	0	0	0	0	0	0	0	0
Tioga	0	0	0	0	0	0	0	0
Tompkins	0	0	0	0	0	0	0	0
Ulster	0	0	0	0	0	0	0	0
Warren	0	0	0	0	0	0	0	0
Washington	0	0	0	0	0	0	0	0
Wayne	0	0	0	0	0	0	0	0
Westchester	0	0	0	0	0	0	0	0
Wyoming	0	0	0	0	0	0	0	0
Yates	0	0	0	0	0	0	0	0

***Section (g)***

***Case Closings***

- See Section (b) for Closings and Transfers
- See Section (c) for Children Receiving Subsidized Child Care

**Section (g) Referral Note**

Data available to meet the remaining requirements of this section were reported in Sections (b) and (c).

***Section (h)***

***Substance Use Disorder Programs***

- Number of recipients served
- Duration of stay in residential treatment

**Table 40: Monthly Average  
Number of Public Assistance Recipients in a  
Congregate Care Level II Drug/Alcohol Treatment Facility  
July 2024 - June 2025**

Local District	Total Recipients	TANF	Safety Net MOE	Safety Net Non-MOE
New York State	4,352	44	18	4,290
New York City	2,182	10	5	2,168
Rest of State	2,170	35	14	2,122
Albany	122	0	1	121
Allegany	6	0	0	6
Broome	52	1	1	51
Cattaraugus	36	0	0	36
Cayuga	15	0	0	15
Chautauqua	49	1	0	47
Chemung	32	0	0	32
Chenango	8	1	0	7
Clinton	17	0	0	17
Columbia	13	0	0	13
Cortland	17	0	0	17
Delaware	3	0	0	2
Dutchess	75	0	0	75
Erie	214	4	2	208
Essex	3	0	0	3
Franklin	12	0	0	12
Fulton	16	1	0	15
Genesee	17	0	0	17
Greene	10	0	0	10
Hamilton	0	0	0	0
Herkimer	7	0	0	7
Jefferson	33	0	0	33
Lewis	3	0	0	3
Livingston	17	1	0	16
Madison	11	0	0	11
Monroe	228	4	1	223
Montgomery	12	0	0	12
Nassau	67	3	1	63
Niagara	72	4	1	68
Oneida	36	1	1	34
Onondaga	196	1	1	195
Ontario	27	1	0	26
Orange	82	0	0	81
Orleans	9	0	0	9
Oswego	24	1	0	23
Otsego	6	0	0	6
Putnam	6	0	0	6
Rensselaer	36	0	0	36
Rockland	41	0	0	41
St. Lawrence	26	1	0	25
Saratoga	22	0	0	22
Schenectady	51	0	0	51
Schoharie	5	0	0	5
Schuyler	4	0	0	4
Seneca	4	0	0	4
Steuben	50	1	0	49
Suffolk	166	5	3	158
Sullivan	17	0	0	17
Tioga	7	0	0	7
Tompkins	16	0	0	16
Ulster	31	0	0	31
Warren	14	0	0	14
Washington	8	0	0	8
Wayne	26	0	0	25
Westchester	93	2	1	91
Wyoming	1	0	0	1
Yates	1	0	0	1



**Table 41: Number of Recipients by Length of Initial Stay in a  
Congregate Care Level II Drug/Alcohol Treatment Facility  
July 2024 to December 2024 Entrants  
Total Public Assistance**

Local District	1 Month	2 Months	3 Months	4 Months	5 Months	6 or More Months
New York State	303	323	343	314	283	1,754
New York City	98	100	108	125	123	863
Rest of State	205	223	235	189	160	891
Albany	4	14	12	8	10	51
Allegany	2	0	0	0	0	3
Broome	6	3	4	1	1	25
Cattaraugus	5	2	5	3	2	15
Cayuga	2	2	1	4	3	3
Chautauqua	3	6	6	6	4	15
Chemung	4	3	4	2	0	17
Chenango	0	0	0	0	0	5
Clinton	6	6	3	0	2	3
Columbia	1	0	2	0	1	6
Cortland	1	0	1	2	2	11
Delaware	1	0	0	0	0	0
Dutchess	4	6	6	2	0	38
Erie	27	27	27	29	19	84
Essex	0	1	1	0	0	2
Franklin	2	2	0	4	0	3
Fulton	2	4	1	0	0	5
Genesee	2	3	1	2	0	5
Greene	0	2	0	0	0	3
Hamilton	0	0	0	0	0	0
Herkimer	2	0	0	0	0	3
Jefferson	7	6	3	4	6	11
Lewis	1	0	0	0	1	1
Livingston	1	1	2	1	0	5
Madison	1	2	3	0	0	4
Monroe	10	19	20	26	15	100
Montgomery	1	3	0	2	1	4
Nassau	5	9	5	6	4	28
Niagara	10	6	13	10	6	27
Oneida	5	2	3	2	2	17
Onondaga	9	15	18	10	14	73
Ontario	7	4	7	3	1	10
Orange	5	6	9	3	5	36
Orleans	0	1	1	1	2	3
Oswego	2	2	3	5	2	13
Otsego	0	0	0	0	0	3
Putnam	1	1	1	1	0	3
Rensselaer	5	3	4	4	2	18
Rockland	3	4	3	0	1	22
St. Lawrence	3	1	1	3	1	12
Saratoga	1	1	4	1	4	10
Schenectady	3	10	7	5	9	19
Schoharie	1	0	1	0	0	2
Schuyler	0	1	0	0	0	2
Seneca	1	1	0	0	1	1
Steuben	2	5	6	3	2	13
Suffolk	30	19	25	21	24	67
Sullivan	2	1	1	1	3	11
Tioga	1	0	0	0	0	1
Tompkins	2	6	8	3	1	8
Ulster	2	2	2	4	2	11
Warren	3	2	3	1	1	5
Washington	1	1	1	2	0	3
Wayne	2	2	2	1	1	18
Westchester	4	6	4	3	5	33
Wyoming	0	0	0	0	0	0
Yates	0	0	1	0	0	0

This page intentionally left blank

***Section (j)***

***Disabled and Work Limited  
Recipients***

- Number of disabled recipients – see Section (c) Subsidized Work Activities
- Number of administrative hearings – see Section (f) Sanctions

### **Section (j) Referral Note**

Refer to Sections (c) and (f) for data required in this section.

## ***Section (I)***

# ***Domestic Violence***

- Number of persons screened indicating current danger
- Number of positive findings
- Number of persons with new waivers and active waivers
- Number of waivers by category
- Duration of waivers

**Table 42: Domestic Violence  
Summary Totals  
July 2024 - June 2025**

Local District	Persons Indicating Current Danger	Persons for Whom Assessments Were Credible	Persons with New Waivers Granted During the Year	Persons with Waivers at Some Point During the Year
New York State	11,281	7,985	7,875	9,787
New York City	7,432	5,524	5,453	6,646
Rest of State	3,849	2,461	2,422	3,141
Albany	26	25	22	34
Allegany	18	16	18	24
Broome	135	88	89	104
Cattaraugus	14	14	13	16
Cayuga	39	38	39	42
Chautauqua	145	34	32	48
Chemung	17	15	14	18
Chenango	8	8	9	13
Clinton	30	29	31	36
Columbia	16	16	14	15
Cortland	14	11	10	24
Delaware	16	11	9	16
Dutchess	48	46	45	68
Erie	801	609	673	885
Essex	5	5	6	8
Franklin	4	3	2	2
Fulton	0	0	0	0
Genesee	0	0	0	0
Greene	4	2	2	2
Hamilton	0	0	0	0
Herkimer	3	3	3	6
Jefferson	14	14	14	15
Lewis	17	16	16	21
Livingston	40	5	4	4
Madison	2	2	2	3
Monroe	38	31	25	33
Montgomery	8	7	7	11
Nassau	0	0	0	1
Niagara	245	42	38	46
Oneida	16	7	6	9
Onondaga	210	209	202	236
Ontario	77	77	72	85
Orange	110	110	87	118
Orleans	0	0	0	0
Oswego	64	58	80	94
Otsego	0	0	0	0
Putnam	1	1	1	2
Rensselaer	102	102	94	113
Rockland	11	11	11	16
St. Lawrence	31	31	29	39
Saratoga	11	5	5	5
Schenectady	158	112	98	134
Schoharie	4	2	1	5
Schuyler	1	0	0	1
Seneca	0	0	0	0
Steuben	175	43	40	61
Suffolk	614	181	179	220
Sullivan	18	18	14	23
Tioga	14	14	16	27
Tompkins	1	1	1	2
Ulster	3	3	1	1
Warren	29	23	21	30
Washington	44	10	10	13
Wayne	72	34	33	42
Westchester	325	315	276	356
Wyoming	47	0	0	0
Yates	4	4	8	14

**Table 43: Domestic Violence**  
**Total Number of Active Waivers by Waiver Type**  
**July 2024 - June 2025**

Local District	Total Waivers	Child Support	Employment	Drug/ Alcohol	Time Limits	Alien Deeming	Residency	Minor Parent	Other
New York State	17,760	13,961	3,312	70	10	8	0	7	392
New York City	11,813	10,895	915	2	1	0	0	0	0
Rest of State	5,947	3,066	2,397	68	9	8	0	7	392
Albany	53	33	18	0	0	0	0	0	2
Allegany	45	25	13	1	1	0	0	1	4
Broome	141	109	30	2	0	0	0	0	0
Cattaraugus	26	13	3	1	0	0	0	1	8
Cayuga	78	54	21	3	0	0	0	0	0
Chautauqua	77	26	27	5	1	2	0	2	14
Chemung	49	15	27	7	0	0	0	0	0
Chenango	17	11	6	0	0	0	0	0	0
Clinton	90	45	31	12	2	0	0	0	0
Columbia	29	11	14	2	0	0	0	0	2
Cortland	31	23	8	0	0	0	0	0	0
Delaware	27	7	18	1	0	0	0	1	0
Dutchess	112	55	24	1	0	0	0	0	32
Erie	1,860	591	1,225	9	2	2	0	1	30
Essex	13	6	7	0	0	0	0	0	0
Franklin	4	1	3	0	0	0	0	0	0
Fulton	0	0	0	0	0	0	0	0	0
Genesee	0	0	0	0	0	0	0	0	0
Greene	3	0	2	0	0	1	0	0	0
Hamilton	0	0	0	0	0	0	0	0	0
Herkimer	10	4	4	0	0	0	0	0	2
Jefferson	27	11	15	0	1	0	0	0	0
Lewis	26	14	6	1	0	0	0	0	5
Livingston	4	3	1	0	0	0	0	0	0
Madison	6	3	3	0	0	0	0	0	0
Monroe	34	30	2	0	0	0	0	0	2
Montgomery	14	5	9	0	0	0	0	0	0
Nassau	1	1	0	0	0	0	0	0	0
Niagara	60	34	16	1	0	1	0	0	8
Oneida	16	4	5	7	0	0	0	0	0
Onondaga	512	403	71	0	0	0	0	0	38
Ontario	172	57	94	7	2	0	0	0	12
Orange	255	135	87	0	0	0	0	0	33
Orleans	0	0	0	0	0	0	0	0	0
Oswego	179	113	53	1	0	0	0	0	12
Otsego	0	0	0	0	0	0	0	0	0
Putnam	2	2	0	0	0	0	0	0	0
Rensselaer	229	126	96	0	0	0	0	0	7
Rockland	18	14	2	0	0	0	0	0	2
St. Lawrence	91	71	20	0	0	0	0	0	0
Saratoga	6	1	4	0	0	0	0	0	1
Schenectady	244	135	71	0	0	0	0	0	38
Schoharie	6	3	3	0	0	0	0	0	0
Schuyler	1	0	1	0	0	0	0	0	0
Seneca	0	0	0	0	0	0	0	0	0
Steuben	93	87	5	1	0	0	0	0	0
Suffolk	455	194	249	3	0	1	0	0	8
Sullivan	28	17	4	0	0	0	0	1	6
Tioga	37	12	20	3	0	0	0	0	2
Tompkins	3	1	2	0	0	0	0	0	0
Ulster	2	0	0	0	0	0	0	0	2
Warren	46	32	1	0	0	0	0	0	13
Washington	20	14	5	0	0	0	0	0	1
Wayne	62	44	8	0	0	0	0	0	10
Westchester	610	456	55	0	0	1	0	0	98
Wyoming	0	0	0	0	0	0	0	0	0
Yates	23	15	8	0	0	0	0	0	0

**Table 44: Domestic Violence**  
**Average Duration of Active Waivers by Waiver Type (In Months)**  
**July 2024 - June 2025**

Local District	Total Average Months	Child Support	Employment	Drug/ Alcohol	Time Limits	Alien Deeming	Residency	Minor Parent	Other
New York State	6	6	6	4	6	11	0	4	5
New York City	6	6	7	6	16	0	0	0	0
Rest of State	5	5	5	4	5	11	0	4	5
Albany	8	5	15	0	0	0	0	0	5
Allegany	4	4	4	6	6	0	0	6	3
Broome	9	10	5	4	0	0	0	0	0
Cattaraugus	10	4	48	6	0	0	0	6	5
Cayuga	4	4	3	5	0	0	0	0	0
Chautauqua	6	5	7	5	6	27	0	4	4
Chemung	5	5	5	5	0	0	0	0	0
Chenango	4	4	4	0	0	0	0	0	0
Clinton	5	5	5	3	5	0	0	0	0
Columbia	4	4	5	4	0	0	0	0	4
Cortland	6	6	6	0	0	0	0	0	0
Delaware	5	5	4	7	0	0	0	4	0
Dutchess	6	7	5	6	0	0	0	0	5
Erie	5	5	6	4	6	5	0	2	6
Essex	4	4	4	0	0	0	0	0	0
Franklin	6	6	6	0	0	0	0	0	0
Fulton	0	0	0	0	0	0	0	0	0
Genesee	0	0	0	0	0	0	0	0	0
Greene	6	0	6	0	0	6	0	0	0
Hamilton	0	0	0	0	0	0	0	0	0
Herkimer	4	4	4	0	0	0	0	0	4
Jefferson	3	3	4	0	4	0	0	0	0
Lewis	4	5	3	6	0	0	0	0	4
Livingston	5	6	4	0	0	0	0	0	0
Madison	3	3	3	0	0	0	0	0	0
Monroe	6	7	4	0	0	0	0	0	4
Montgomery	4	5	3	0	0	0	0	0	0
Nassau	183	183	0	0	0	0	0	0	0
Niagara	5	5	5	7	0	6	0	0	5
Oneida	5	5	6	4	0	0	0	0	0
Onondaga	5	4	5	0	0	0	0	0	4
Ontario	4	4	5	3	6	0	0	0	4
Orange	6	5	9	0	0	0	0	0	6
Orleans	0	0	0	0	0	0	0	0	0
Oswego	5	5	4	6	0	0	0	0	4
Otsego	0	0	0	0	0	0	0	0	0
Putnam	5	5	0	0	0	0	0	0	0
Rensselaer	5	5	5	0	0	0	0	0	5
Rockland	5	6	2	0	0	0	0	0	3
St. Lawrence	5	5	5	0	0	0	0	0	0
Saratoga	2	1	2	0	0	0	0	0	3
Schenectady	5	5	4	0	0	0	0	0	4
Schoharie	11	4	18	0	0	0	0	0	0
Schuyler	5	0	5	0	0	0	0	0	0
Seneca	0	0	0	0	0	0	0	0	0
Steuben	5	5	6	5	0	0	0	0	0
Suffolk	5	5	5	4	0	6	0	0	5
Sullivan	4	4	5	0	0	0	0	4	4
Tioga	5	5	5	7	0	0	0	0	6
Tompkins	4	4	4	0	0	0	0	0	0
Ulster	7	0	0	0	0	0	0	0	7
Warren	5	5	6	0	0	0	0	0	5
Washington	5	5	6	0	0	0	0	0	4
Wayne	4	4	5	0	0	0	0	0	4
Westchester	5	5	5	0	0	6	0	0	5
Wyoming	0	0	0	0	0	0	0	0	0
Yates	5	6	4	0	0	0	0	0	0



## **Appendix A**

### **Welfare Reform Act of 1997 Reporting Provisions**

(Section 149 of Part B of Chapter 436 of the Laws of 1997)

1. The department of social services or its successor agencies and the department of labor shall collect data related to the operation of public assistance programs including, but not limited to, information that must be submitted to the department of health and human services pursuant to the personal responsibility and work opportunities reconciliation act of 1996 (P.L. 104-193) and any other provision of federal or state law or regulations governing programs administered under title iv-a of the social security act or the social services law. Social services districts shall assist each agency in accumulating such data in accordance with instructions from the appropriate agency.
2. Each agency shall make reasonable efforts to collect and maintain the data required pursuant to this subdivision. Data collection shall begin as soon as practicable, but in no case later than upon the completion of the redesign of the welfare management system and the completion of welfare to work caseload management system. The responsible agency shall collect the data related to applicants and recipients of public assistance programs established pursuant to the personal responsibility and work opportunities reconciliation act of 1996 (P.L. 104-193) and the social services law including, but not limited to, the following:
  - a. Data related to applicants seeking public assistance including but not limited to:
    1. Number of applicants accepted to participate in each program;
    2. Number of applicants who are denied public assistance and the reason for denial;
    3. Number of applicants who were previous recipients of public assistance on or after December 2, 1997 including length of time previously on assistance; reason for initial termination; length of time between termination and reapplication; and reason for reapplication; and
    4. Number of applicants who have resided in the state for fewer than twelve months at the time of application.
  - b. Data related to recipients of public assistance including but not limited to:
    1. Number of terminated recipients of public assistance and reason for termination; and
    2. Number of recipients that move between public assistance programs.
  - c. Data related to work activities subsidized or otherwise sponsored by the department of social services, its successor agencies, the department of labor, or social services districts including but not limited to:
    1. Number of recipients participating in work activities;
    2. Number of recipients receiving an exemption from participating in work activities;
    3. The duration of and reasons for such exemptions;
    4. Number of participants receiving subsidized child care and the number of exemptions granted due to lack of available child care;
    5. The type of work activities;
    6. Hours of work per week per recipient;
    7. Duration of enrollment in such work activity;
    8. Reason for termination from work activity;
    9. Number of requests for administrative hearings related to work activity participation including the nature of such requests by general categories and the outcome of such hearings;
    10. Number of participants receiving subsidized transportation services;
    11. Participant retention in work activities by type of work activity;
    12. Length of time before assignment to a work activity;
    13. Number of recipients changing work activity assignments and reasons for such changes; and

14. Expenditures by social services districts in support of work activities.

- d. Data related to unsubsidized work activities including but not limited to:
  - 1. Number of recipients hired;
  - 2. Initial rate of pay by either annual salary or wage basis;
  - 3. Retention rates;
  - 4. Means of obtaining unsubsidized employment including, but not limited to referral by the social services district and direct contact with employer; and
  - 5. Number of participants receiving subsidized child care and/or transportation services.
- e. Data related to recipient training and education activities including but not limited to:
  - 1. Number of recipients in training or educational activities by type of activity;
  - 2. Number of recipients mandated to attend training or education activities that fulfill work participation requirements;
  - 3. Length and duration of training or education activity including the number of hours per week and duration;
  - 4. Number of recipients receiving subsidized child care and/or transportation services;
  - 5. Number of recipients transferred to work activities;
  - 6. To the extent available, the number of recipients who obtain work directly from training or education activities including starting salary and employee retention rates; and
  - 7. Expenditures by social services districts in support of training and education activities.
- f. Data related to recipient sanctions including but not limited to:
  - 1. Number of sanctions, by type of sanction;
  - 2. Number of sanctions with defined minimum period, by type of sanction;
  - 3. Average length of sanction until recipient compliance, by type of sanction;
  - 4. Amount of sanction, by type of sanction;
  - 5. Period of time starting on or after December 2, 1996 that the participant was in program prior to the sanction;
  - 6. Number and outcome of administrative hearings related to sanctions, by type of sanction; and
  - 7. Number of sanctions against the entire assistance unit.
- g. Data related to case closings including but not limited to:
  - 1. Number of case closings;
  - 2. Reason for case closing including, but not limited to, self-termination without reason;
  - 3. Length of time receiving assistance on or after December 2, 1996 before case closing;
  - 4. On an aggregate basis, the length of time recipients do not receive public assistance in New York state following case closing occurring on or after December 2, 1996; and
  - 5. Number of former public assistance recipients receiving subsidized child care and/or transitional medical assistance.
- h. Data related to substance abuse treatment programs including but not limited to:
  - 1. Number of recipients receiving substance abuse treatment services for which the cost of such services is paid for by the social services district using public assistance monies;
  - 2. Length of reimbursed recipient participation in treatment program; and
  - 3. Types of substance abuse treatment programs receiving reimbursement from social services districts.
- i. Data related to pregnancy prevention programs funded through federal monies received by the state pursuant to title iv-a of the social security act including but not limited to:
  - 1. Number of program participants;
  - 2. Duration of program participation; and

3. Types of services provided.

- j. Data related to disabled and work limited recipients of public assistance pursuant to provisions of the welfare reform act of 1997 including, but not limited to:
1. Number of persons applying for public assistance that are screened;
  2. Number of current recipients of public assistance screened;
  3. Number of persons applying for public assistance that are found to be disabled;
  4. Number of current recipients of public assistance found to be disabled;
  5. Number of persons applying for public assistance found to be work limited;
  6. Number of current recipients of public assistance found to be work limited;
  7. Duration of finding by category;
  8. Number of changes in work activity exemption status;
  9. Number and outcome of administrative hearings related to the disability screening and the determination of work activity exemptions; and
  10. Data relating to work and training and education activities pursuant to subsections c, d and e of this section.
- k. Data related to the food assistance program including but not limited to:
1. Number of applicants under eighteen years of age by chronological age;
  2. Number of applications denied by reason for denial;
  3. Number of recipients under eighteen years of age by chronological age and the average amount of food assistance benefits per recipient issued by the social services district;
  4. Number of recipients under eighteen years of age by case and by household and the average amount of food assistance benefits issued per case and per household by the social services district;
  5. Number of recipients under eighteen years of age in a case and/or in a household where other individuals in the case and/or household are in receipt of federal food stamp benefits and the average amounts of federal and state food stamp benefits issued per case and/or per household by social services district;
  6. Number of recipients under eighteen years of age in a case or household receiving other public assistance benefits and the average amounts of food assistance benefits issued per recipient and per public assistance case by the social services district;
  7. Number of case closings for cases where the recipient is under eighteen years of age by reason for case closing including but not limited to case closing as a result of naturalization;
  8. Number of applicants applying for food assistance benefits where the primary reason for potential eligibility is a disability as defined by provisions of this act establishing a food assistance program;
  9. Number of applications denied by reason for denial;
  10. Number of disabled recipients by chronological age and the average amount of food assistance benefits per recipient issued by the social services district;
  11. Number of disabled recipients by case and by household and the average amount of food assistance benefits issued per case and per household by the social services district;
  12. Number of disabled recipients in a case and/or in a household where other individuals in the case and/or household are in receipt of federal food stamp benefits and the average amounts of federal and state food stamp benefits issued per case and/or per household by social services district;
  13. Number of disabled recipients in a case or household receiving other public assistance benefits and the average amount of food assistance benefits issued per recipient and per public assistance case by the social services district including, but not limited to, receipt of federal and/or state supplemental payment made pursuant to title xvi of the social security act;
  14. Number of case closings for cases where the recipient is disabled by reason for termination including but not limited to case closing as a result of naturalization;

15. Number of applicants applying for food assistance benefits where the primary reason for potential eligibility is that the applicant is elderly as defined by provisions of this act establishing a food assistance program;
  16. Number of applications denied by reason for denial;
  17. Number of elderly recipients by chronological age and the amount of food assistance benefits per recipient issued by the social services district;
  18. Number of elderly recipients by case and by household and the average amount of food assistance benefits issued per case and per household by the social services district;
  19. Number of elderly recipients in a case and/or in a household where other individuals in the case and/or household are in receipt of federal food stamp benefits and the average amount of federal and state food stamp benefits issued per case and/or per household by the social services district;
  20. Number of elderly recipients in a case or household receiving other public assistance benefits and the average amount of food assistance benefits issued per recipient and per public assistance case by the social services district including, but not limited to, receipt of federal and/or state supplemental payment made pursuant to title xvi of the social security act;
  21. Number of case closings for cases where the recipient is elderly by reason for termination including but not limited to case closing as a result of naturalization; and
  22. Number and outcome of administrative hearings related to the food assistance program by general category.
- I. Data related to the domestic violence screening process including but not limited to:
1. Number of applicants and recipients screened;
  2. Number of positive findings;
  3. Number of waivers by category granted as a result of a positive finding; and
  4. Duration of such waiver.
3. To the extent possible, the data collection activities required by this act shall be designed to collect data in the least expensive and least time consuming manner possible. Scientifically acceptable statistical sampling methods may be used to collect and maintain data on an aggregate basis when authorized by the department of health and human services or when the commissioner of social services or commissioners of its successor agencies determines that collection of such data by any other means is not practicable or would result in significant additional costs. To the extent that statistical sampling is used to collect and maintain data, and unless otherwise required by the department of health and human services, the sample size shall be no larger than the sample size required by the United States department of agriculture for food stamp quality control purposes pursuant to the food stamp act of 1977 and subsequent amendments.
  4. The commissioner of social services or commissioners of its successor agencies, and the commissioner of labor shall provide reports summarizing data collected pursuant to this act to the temporary president of the senate, the chairperson of the senate finance committee, the speaker of the assembly, and the chairperson of the assembly ways and means committee. The first such report shall be provided to the temporary president of the senate, the chairperson of the senate finance committee, the speaker of the assembly, and the chairperson of the assembly ways and means committee no later than December 2, 1998 and annually thereafter. The commissioner of social services or the commissioners of its successor agencies, in conjunction with the commissioner of health and the commissioner of labor, shall provide the temporary president of the senate, the chairperson of the senate finance committee, the speaker of the assembly, and the chairperson of the assembly ways and means committee with an annual report summarizing data collected pursuant to this act.
  5. Each agency shall provide the temporary president of the senate, the chairperson of the senate finance committee, the speaker of the assembly, and the chairperson of the assembly ways and means committee with all reports filed with the department of health and human services pursuant to

the data collection and reporting requirements of the personal responsibility and work opportunities reconciliation act of 1996 (P.L. 104-193).

6. The commissioner of social services or the commissioners of its successor agencies, in conjunction with the commissioner of labor, and the commissioner of health shall develop a plan to provide the legislature with the ability to have online access to the welfare management system and the welfare to work caseload management system upon completion of the redesign of the welfare management system and implementation of the welfare to work caseload management system for purposes of obtaining aggregate program data. Such plan shall provide for security measures necessary to ensure the confidentiality of data residing on the welfare management system and the welfare to work caseload management system in conformance with all applicable federal and state laws and regulations. The plan shall be submitted to the temporary president of the senate and the speaker of the assembly no later than February 15, 1998.